

PlayStation 4™  
PlayStation Move™

- LED-tilahtaja on analoginen
- Indikaattori LED-ään analoogilla
- Indikaattori LED-ään analoogilla
- Indikaattori LED-ään analoogilla
- Indikaattori LED-ään analoogilla
- LED-tilahtaja on analoginen
- Indikaattori LED-ään analoogilla
- LED-tilahtaja on analoginen
- LED-tilahtaja on analoginen
- LED-tilahtaja on analoginen
- LED-tilahtaja on analoginen

#### High sensitive buttons

- Pulsanti ad alta sensibilità
- Botones muy sensibles
- Botões altamente sensíveis
- Hohe sensitive Tasten
- Touches très sensibles
- Zeer gevoelige toetsen
- Hojtelsonime knapper
- Przyciski o wysokiej czułości
- Höögkänsliga knappar

#### Built-in dual motors

- Doppil motorit integrati
- Motores duales integrados
- Motores duplos integrados
- Integrierte Doppelmotoren
- Deux moteurs intégrés
- Ingebouwde dubbele motor
- To indbyggede motorer
- Wbudowane podwójne silniki
- Inbyggda dubbelmotorer

Information available at [www.dragonwar.eu/ce](http://www.dragonwar.eu/ce)

DRAGONWAR SA  
Rue du Grand Champ, 14 - 5380 Fernelmont - BELGIUM

[www.dragonwar.eu](http://www.dragonwar.eu)

Post code: 5380

#### Accurate thumb sticks

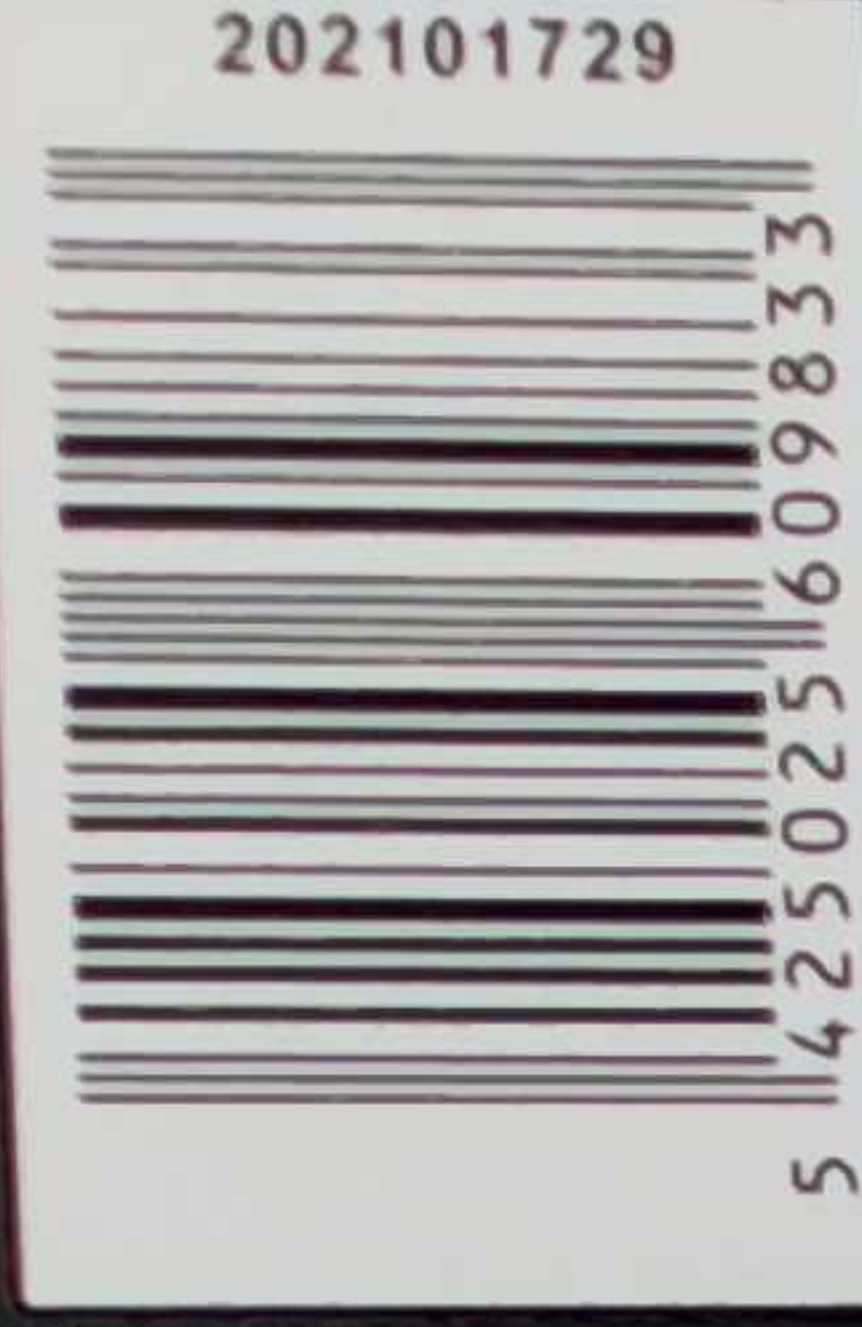
- Levettes accurate
- Joysticks analógicos precisos
- Manipulos de polegares precisos
- Präzise Analogsticks
- Joysticks précis
- Nauwkeurige joysticken
- Præcise tommelpinde
- Precyzyjne drążki kierunkowe
- Precise styrespakar



#### Soft-touch rubber coated

- Rivestimento in gomma morbida al tatto
- Revestimento de borracha de toque suave
- Recubierta de goma de tacto suave
- Soft-Touch-Gummibeschichtung
- Revêtement en caoutchouc doux au toucher
- Zacht aanvoelende rubberen coating
- Soft-touch gummibelagt
- Miękka w dotyku gumowana powłoka
- Soft-touch gummibelagt

GSPS4-RD



THIS PRODUCT IS NOT SUITABLE FOR CHILDREN UNDER 7 YEARS OLD.

SPECIFICATION & APPEARANCE ARE SUBJECT TO CHANGE WITHOUT PRIOR NOTICE. THIS PRODUCT IS NOT DESIGNED, MANUFACTURED, SPONSORED OR ENDORSED BY SONY COMPUTER ENTERTAINMENT INC., MICROSOFT CORPORATION, ANY OTHER VIDEO GAME PRODUCER OR THEIR RESPECTIVE DIVISIONS. ANY TRADEMARKS USED ARE THE PROPERTY OF THEIR RESPECTIVE OWNERS. ONLY THE TRADEMARK DRAGONSHOCK IS OWNED BY CLD.

CLD DISTRIBUTION SA, RUE DU GRAND CHAMP 14, 5380 FERNELMONT, BELGIUM. TM & COPYRIGHT ©2022 CLD DISTRIBUTION SA ALL RIGHTS RESERVED. MADE IN CHINA.

