

# BUILD GEL UV/LED

## STEP BY STEP



STEP 1

Shorten the nail plate as much as possible, use a 180/240 grit nail file.



STEP 2

Push back the cuticles using a cuticle pusher or nail drill.



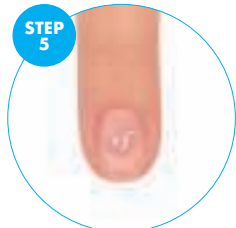
STEP 3

Mattify the nail plate, use a 180/240 grit nail file, nail buffer or nail drill, remove the dust.



STEP 4

Apply Nail Prep or Primer Acid, leave to dry. Do not apply on the cuticles.



STEP 5

Apply Tape Bond, wait 30 sec, next apply a small amount of the Build Gel Base\*.



STEP 6

Rub the base into the nail plate using a gel brush. Cure in an LED lamp for 30 sec.



STEP 7

Cut the form to fit the nail's free edge.



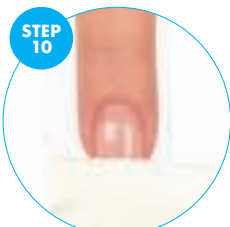
STEP 8

Apply a small amount of gel onto the nail and form, create the skeleton. Cure in an LED lamp for 5-15 sec.\*\*.



STEP 9

Apply a second layer of gel, build the apex and shape. Cure for approx. 5 - 15 sec. \*\* Press the mass and cure in an LED lamp for 60 sec.



STEP 10

Remove the dispersion layer using Duo Prep.



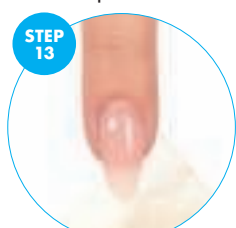
STEP 11

Give the nail the perfect shape using 180/240, 100/180 or 150/150 grit nail files. Smoothe the surface with a buffer and clear the dust. Wipe with Dup Prep.



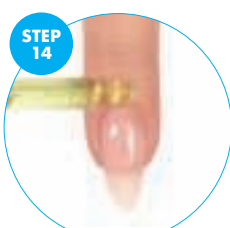
STEP 12

Apply Build Gel Top \*\*\* Cure in an LED lamp for 60 sec.



STEP 13

Remove the dispersion layer using Duo Prep or Cleaner.



STEP 14

Apply the 5 Oil Complex, rub into the hands and cuticles.

- \* Build Gel Base can be replaced with Mega Base or Boost Base. Always apply a small amount of base and rub into the nail plate. Cure in an LED lamp for 30 sec.
- \*\* Build Gel's curing time depends on the amount of applied product.
- \*\*\* Build Gel Top can be replaced with any hybrid top in Victoria Vynn's offer.

# SALON BUILD GEL UV/LED

VICTORIA VYNN™



# BUILD GEL UV/LED

3 PHASE SYSTEM: BASE, COLOR, TOP

**FLEXIBLE, SELF-LEVELING,  
DURABLE, TOUGH, RELIABLE**

Self-leveling and flexible, medium density gels for nail building. Designed for building on a form, a tips and to strengthen the natural nail plate. The gel's properties ensure great comfort of work: easy application with a brush, perfect C curve construction, quick and easy to achieve the desired shape.

Acid free, odorless, fantastic adhesion.

**Curing time:**

48W LED Lamp: 60 sec, 36W UV lamp: 120 - 180 sec.



## PRIMER ACID

An acid based product, increases adhesion of the design to the natural nail plate. Balances pH, etches the nail plate, removes moisture.

15ml / 0,5 Fl.oz., Ref. 330143

## BASE BUILD GEL

A base for build gel, evens out the nail plate and increases the gel's adhesion. Comes in a practical bottle with a brush. Increases the design's durability.

15ml / 0,5 Fl.oz., Ref. 330141

## TOP BUILD GEL

A top for build gel, protects the design and gives a beautiful shine.

15ml / 0,5 Fl.oz., Ref. 330142



NAIL EXTENSION FORMS FOR THE PERFECT SALON SHAPE: MODERN ALMOND, OVAL, SQUARE. THE MARKED LINES MAXIMALLY FACILITATE THE BUILDING OF NAILS AND SHORTEN THE WORKING TIME FOR STYLISTS. MADE FOR USE WITH GEL, ACRYLIC, ACRYLIC-GEL AND MEGA BASE. THE BOX WITH THE DISPENSER MAKES WORK EASIER.

## BASIC NAIL FORMS

Forms made of flexible laminated paper. The glue is specially selected for the thickness and type of paper. Economical for beginner stylists.

Ref.: 330346 - 100 set. | 330350 - 400 set.

## SALON NAIL FORMS

Forms made of laminated metalized paper with optimal elasticity and stiffness, with strong glue. Ideally adhere to the nails and maintain the shape of the tunnel to the end of the designing process.

Ref.: 330785 - 100 set. | 330786 - 400 set.

# G E L B R U S H E S



## Gel Brush 090 4

Gel brush, bristles arranged in a flat stack, with a straight end, length 10 mm.

Ref. 330307

## Gel Brush 090 1

Gel brush, bristles arranged in a flat stack, with a straight end, length 6 mm.

Recommended for „one stroke“ designs.

Ref. 330309

## Gel Brush 092 4

Gel brush, bristles arranged in a flat stack, with a semi-circular end, length 14 mm.

Ref. 330310

Brush for gel, hybrid base and gel base, bristles arranged in a flat stack, with a semi-circular end, length 7 mm.

Ref. 330308

The elegant design of the brushes with Kolynski bristles, with black crystals, a metal cap which protects the bristles.

## Oval Gel Brush 8 OVAL / GEL

For gel application, in the shape of a cat tongue, facilitates gel application around the cuticles, 13,5 mm bristle length.

Ref. 330693

## Flat Gel Brush 4 FLAT / GEL

A rectangular shaped, flat brush for gel application, the dense bristles ensure soft gel application, 9 mm bristle length.

Ref. 330692

## Brush case

A case with a zipper and an additional function which allows it to be folded in half and used as a stable brush stand. Many compartments for brushes and accessories.

Ref. 330697