



Created: 08.10.2021

Artwork version: v1

Game Title: DualSense Wireless Controller Colour 4

Cutter Ref: CA36578

Ref: 86527_0006_sy_Dummy_Box_EUR

Language: European

Final size: 319.13x532.5mm



TOP SECRET Sony Interactive Entertainment

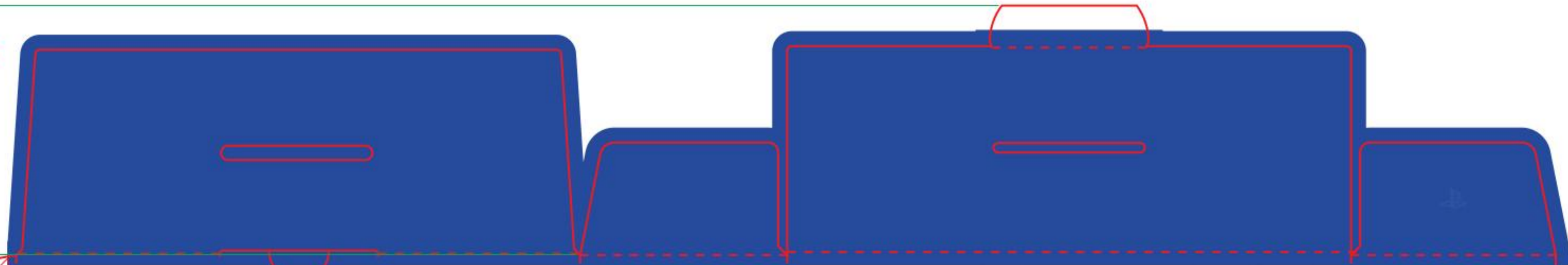
319.13

83.04

188.87

47.22

CA36578




Heighten Your Senses™

Speel met je zintuigen • Schärfe deine Sinne • Scateni i tuoi sensi • Élevez vos sens

 HAPTIC FEEDBACK¹ Haptische feedback Feedback aptico Retour tactile ¹	 ADAPTIVE TRIGGERS¹ Adaptieve triggers Adaptive Trigger ¹ Grilletti adattivi ¹ Gâchettes adaptatives ¹	 BUILT-IN MICROPHONE Geïntegreerde microfoon Integriertes Mikrophon Microfono integrato Microphone intégré	 SIGNATURE COMFORT Vertrouwd comfortabel Bewährter Komfort Comfort esclusivo Un confort inégalable
---	---	---	---

EN ¹ Available when features supported by game. A USB cable is not included. To connect or charge the controller, use the USB cable supplied with the PS5 console. ² Always update your PS5 system software to the latest version. ³ Design and specifications are subject to change without notice.
NL ¹ Deze functie kan niet worden gebruikt zonder de juiste game. Een USB-kabel is niet inbegrepen. Gebruik de USB-kabel die met de PS5-console is meegeleverd om de controller aan te sluiten op je laptop.
² Het gebruik van de PS5-systeemsoftware en de game software voor de laatste versie is vereist voor de meeste functies.
³ Het ontwerp en de afmetingen van de controller kunnen wijzigen zonder vooraf kennisgeving.
DE ¹ Verfügbar, wenn die Funktion von Spiel unterstützt wird. Ein USB-Kabel ist nicht enthalten. Wenn Sie den Controller anschließen oder laden möchten, verwenden Sie das mit der PS5-Konsole gelieferte USB-Kabel. ² Aktualisieren Sie die PS5-Systemsoftware und die Spielesoftware bis zur neuesten Version.
³ Lesen Sie bitte vor dem Gebrauch die mit diesem Produkt mitgelieferte Bedienungsanleitung.
FR ¹ Disponible lorsque les fonctionnalités sont prises en charge par le jeu. Un câble USB n'est pas inclus. Pour connecter ou charger le contrôleur, utilisez le câble USB fourni en dotacion avec la console PS5. ² Toujours mettre à jour le logiciel de votre console PS5. ³ Le design et les spécifications sont susceptibles de changer sans préavis.
IT ¹ Funzionalità disponibili se supportate dal gioco. *Cavo USB non incluso. Per collegare o caricare il controller, utilizzare il cavo USB fornito in dotazione con la console PS5. ² Aggiornare sempre il software di sistema PS5 e il software del gioco fino alle versioni disponibili. ³ Leggere attentamente la documentazione fornita con il prodotto prima dell'uso. * Adattivo specificato possono variare i modelli e le specifiche.
PT ¹ Disponível quando as funcionalidades estiverem suportadas pelo jogo. * Cabo USB não incluído. Para conectar ou carregar o controlador, utilize o cabo USB fornecido em dotacao com a console PS5. ² Sempre atualize o software de sistema PS5 e o software do jogo até as versões disponíveis. ³ Leia atentamente a documentação fornecida com o produto antes de utilizar. * Conforto exclusivo pode variar entre modelos e especificações.
ES ¹ Disponible cuando las características estén soportadas por el juego. * Cable USB no incluido. Para conectar o cargar el controlador, utilice el cable USB que se proporciona con la consola PS5. ² Siempre actualice el software de sistema PS5 y el software del juego hasta las últimas versiones disponibles. ³ Lea atentamente la documentación que se proporciona con el producto antes de utilizarlo. * El confort exclusivo puede variar entre modelos y especificaciones.
RU ¹ Доступно, когда функция поддерживается игрой. * Кабель USB не включен. Для подключения или зарядки контроллера используйте кабель USB, который идет в комплекте с консолью PS5. ² Всегда обновляйте программное обеспечение системы PS5 и программное обеспечение игры до последних доступных версий. ³ Внимательно прочтите документацию, прилагаемую к продукту перед использованием. * Комфорт исключительный может различаться между моделями и спецификациями.

Compatible Hardware /
Compatible hardware / Kompatiblie
Hardware / Hardware Compatible /
Matériel compatible :





PlayStation.





DualSense™

Wireless Controller / draadloze controller / Wireless-Controller /
Controller wireless / Manette sans fil


For / Voor / Für / Per / Pour PS5™

Contents / Inhoud / Inhalt /
Contenuti / Contenu :
CFI-ZCT1W

EN • DualSense Wireless Controller - Nova Pink • Instruction manual	IT • Controller wireless DualSense - Nova Pink • Manuale di istruzioni
NL • DualSense draadloze controller - Nova Pink • Gebruiksaanwijzing	FR • Manette sans fil DualSense - Nova Pink • Mode d'emploi
DE • DualSense Wireless-Controller - Nova Pink • Bedienungsanleitung	



© 2021 Sony Interactive Entertainment Inc. All rights reserved. "SONY" and "PS" are registered trademarks or trademarks of Sony Interactive Entertainment Inc. in the United States and other countries. "DualSense" and "Heighten Your Senses" are registered trademarks or trademarks of Sony Interactive Entertainment Inc. in the United States and other countries. "PlayStation" and "PlayStation 5" are registered trademarks or trademarks of Sony Interactive Entertainment Inc. in the United States and other countries. "SONY" and "PS" are registered trademarks or trademarks of Sony Interactive Entertainment Inc. in the United States and other countries. "DualSense" and "Heighten Your Senses" are registered trademarks or trademarks of Sony Interactive Entertainment Inc. in the United States and other countries. "PlayStation" and "PlayStation 5" are registered trademarks or trademarks of Sony Interactive Entertainment Inc. in the United States and other countries.



CFI-ZCT1W
playstation.com
Made in China / Versaardigd in China
Herprodukt in China / Prodotto in Cina
Fabriqué en Chine

FOR DISPLAY PURPOSES ONLY



188.08

69.04

188.08

68.25

532.5

<<<<< FLUTE / GRAIN >>>>>