

K

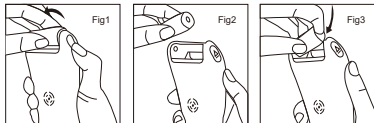
# Size: 110x105mm对折

## using the step

1. Power on, press and hold for three seconds, the display will light up, the motor working grinding head rotates, and press and hold for three seconds to turn off.
2. Speed regulation Under normal power-on state, touch the start, one gear and two gear switch
3. Power off Under normal power on state, press and hold for three seconds to power off.

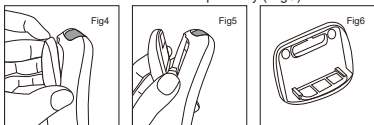
## Instructions for changing grinding head

1. Turn off the product t;
2. Press the head release button and pull the head up and out. (Fig1)
3. Press one end of the grinding head into the square groove. (Fig2)
4. Then press the other end of the square head, install it and hear a "pop" sound, the installation is complete. (Fig3)



## Cleaning instructions

1. Turn off the product:
2. Open and remove the dust compartment. (fig4, 5)
3. Clean the dust chamber with a cleaning brush, or rinse the dust chamber separately. (Fig6)

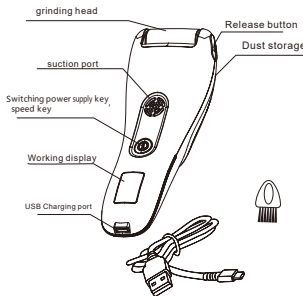


## Product Manual



Please read the instructions for use before using this product

## Product Description



## Specification

- Product name: foot grinder
- Product model: 8019
- Charging voltage: 5v
- Charging current: 1A

## Charging instructions

- Connect the charger, the display battery flashes. Display the current power until it displays "100", it means the battery is fully charged.
- When the power display is full, the power display is always on, and the charger should be unplugged at this time.
- After unplugging the charger, the display goes out and does not display.
- When connected to the charger, the product can be used normally.

## Product features

Built-in Hpolymer lithiumion battery;  
With its own dust collection function, reduce the fall of small particles (powder can be partially inhaled);

One-key switch, with working indicator (charging indicator), rotation speed can be switched;

General type-C USB charging port, 5VDC charging voltage, most of the phone charger is applicable;

Removable multi-grinding head configuration can choose coarse sand, fine sand and grinding head according to the actual situation;

Wireless usage, unlimited space, available globally ;

Note: this manual has tried its best to ensure the accuracy and rigor of the information provided, but the company reserves the right to change the manual in view of the continuous improvement and upgrading of the product.

## Directions for use

- Before using this product, please ensure that you have read and know all the safety precautions.
- When the grinding head is rotating, the grinding head touches the skin of the part to be rubbed, and slowly presses down. The pressure is no discomfort to the skin.
- In case of skin discomfort, please adjust the pressure or stop using;
- After use, please timely charge, long-term under a state of insufficient power will lead to degradation of lithium battery performance;
- After use, please timely clean the dust storage bin, dust accumulation may affect the effect of dust collection;