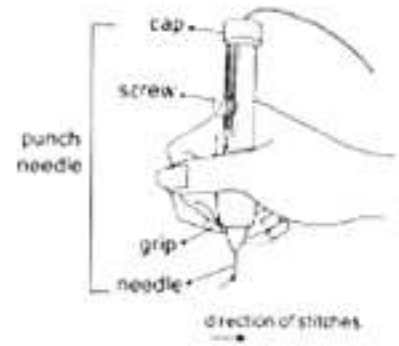


# HOW TO PUNCH

## HOLDING THE NEEDLE

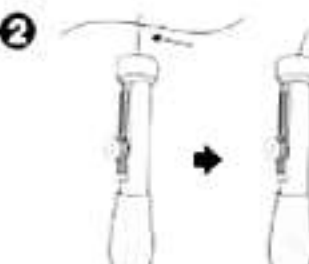
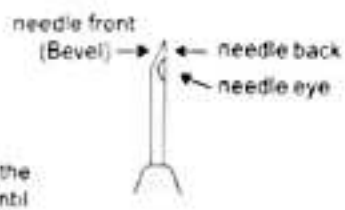
- Hold the punch needle on its Grip
- Face the Needle Front (Bevel) in intended direction and keep in a vertical position



## THREADING THE NEEDLE

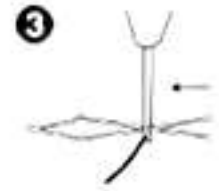


- Insert the threader into the Punch Needle from the needle point and completely through its barrel until it comes out the opposite end of the punch needle

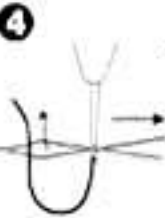


- Insert thread/yarn into the Threader Loop and pull the Threader back out of the needle

- Pull the thread/ yarn downward out of the Threader Tip end and remove the thread or yarn from the threader.



- Insert the Threader through the Needle Eye from the Needle Back of the needle tip.

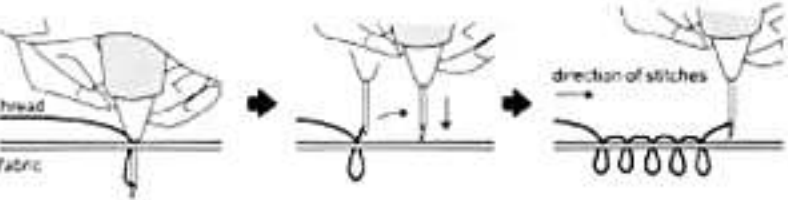


- Place the end of the thread/yarn into the Threader and pull the threader back out of the needle eye
- Pull the thread/yarn downward out of the threader tip and remove the thread/yarn from the threader.



- Threading is completed

## PUNCHING TECHNIQUE

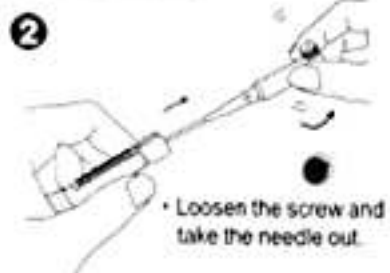


- Punch needle should penetrate all the way into the fabric so the Grip of the needle touches the fabric. The needle must be pushed all the way in on each stitch to make an even look.
- Lift needle out of fabric just enough to move to next stitch. Keep the needle as close to the material as possible. Lifting the needle too high shortens the loops on the front of the design and creates unwanted loops on the back.

# HOW TO EXCHANGE THE NEEDLE



- Remove the cap.



- Loosen the screw and take the needle out.



- Release the needle from Joint and change the desired needle on.



- Insert the needle into barrel and tighten the screw once the loop length is determined.

Create a three-dimensional embroidery design simply by Sew Mate Punch Needle.

This package includes:

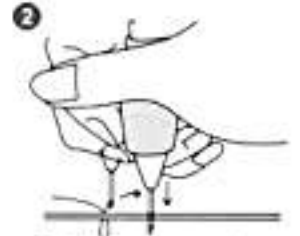


Item No.	Description
WD-PN-001PK	Punch Needle Set
WD-PN-001	Punch Needle × 1
WD-PN-101	1-Ply Needle × 1
WD-PN-102	3-Ply Needle × 1
WD-PN-103	Yarn Needle × 1
WD-PN-200	Needle Threader × 1

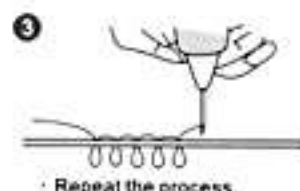
\* The replacement of needles and threaders are available for individual purchase.



- Penetrate the needle into the fabric.



- Pull the needle up and move it ahead to next stitch.



- Repeat the process.