

대한치과의사협회 공식 추천품

**aquapick**<sup>®</sup>

**사용설명서**  
**User Guide**

아쿠아픽 구강세정기

ADVANCED ORAL IRRIGATION SYSTEM  
Family Dental System Includes Four Jet Tips



aquapick



← 자세한 제품  
정보 보기  
QR코드를  
스캔하세요



← For more details  
on the product,  
Scan the QR code.

## SAFETY PRECAUTIONS

**For EU:** This appliance can be used by children aged from 8 years and above and persons with reduced physical, sensory or mental capabilities or lack of experience and knowledge if they have been given supervision or instruction concerning use of the appliance in a safe way and understand the hazards involved. Children shall not play with the appliance. Cleaning and user maintenance shall not be made by children without supervision.

**For other than EU:** The appliance is not to be used by persons (including children) with reduced physical, sensory or mental capabilities, or lack of experience and knowledge, unless they have been given supervision or instruction. Children being supervised not to play with the appliance.

## SAFETY PRECAUTIONS

**For EU:** This appliance can be used by children aged from 8 years and above and persons with reduced physical, sensory or mental capabilities or lack of experience and knowledge if they have been given supervision or instruction concerning use of the appliance in a safe way and understand the hazards involved. Children shall not play with the appliance. Cleaning and user maintenance shall not be made by children without supervision.

**For other than EU:** The appliance is not to be used by persons (including children) with reduced physical, sensory or mental capabilities, or lack of experience and knowledge, unless they have been given supervision or instruction. Children being supervised not to play with the appliance.

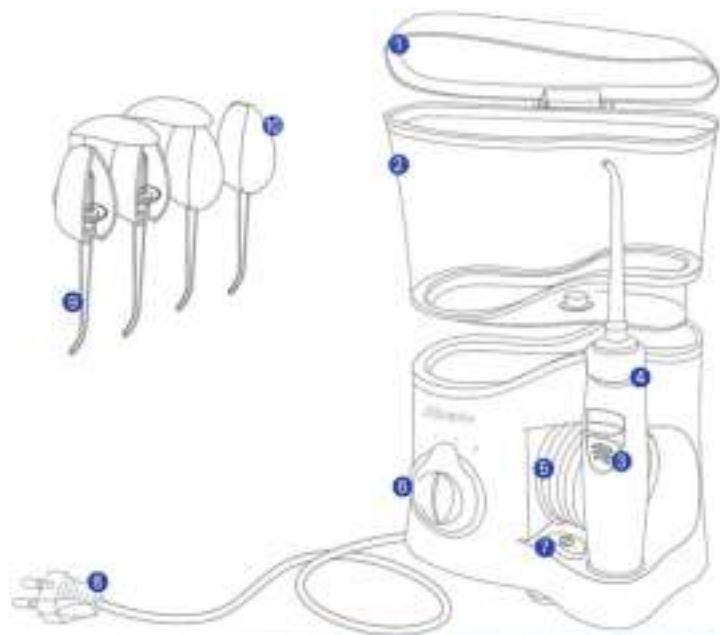
- The power cord of this appliance cannot be replaced.  
If the power cord is damaged, the appliance must be disposed.
- Oral irrigators shall be used only with cold or warm water, or specific solutions as defined in the manufacturer's instructions.

**WARNING-To reduce the risk of burns, electrocution, fire, or injury to persons:**

- Always unplug this product immediately after using.
- Do not use while bathing.
- Do not place or store product where it can fall or be pulled into a tub or sink.
- Do not reach for a product that has fallen into water. Unplug immediately.
- This product should never be left unattended when plugged in.
- Use this product only for its intended use as described in this manual.
- Never drop or insert any object into any opening or hose.
- Never operate the product if it is not working properly, if it has been dropped or damaged, or dropped into water. Return the product to a service center immediately for examination and repair.
- Never block the air openings of the product. Keep the air openings free of lint, hair, etc.
- Fill reservoir with water only unless otherwise specified by manufacturer. Do not overfill.
- At the risk of electric shock do not remove cover(or back). Refer servicing to qualified service personnel.

## PARTS LIST 제품구성

1. Water Tank Cover / 물통 뚜껑
2. Water Tank / 물통
3. Water Switch Push Button / 분사 스위치
4. Handle / 손잡이
5. Spray Tube / 분사 튜브
6. Water Pressure Adjust Knob / 수압조절 다이얼
7. Power Switch / 전원 스위치
8. Plug / 플러그
9. Jet Tips / 제트팁(4ea)
10. Jet Tip Holders / 제트팁걸이(4ea)



# SPECIFICATIONS 제품사양

## 기본사양

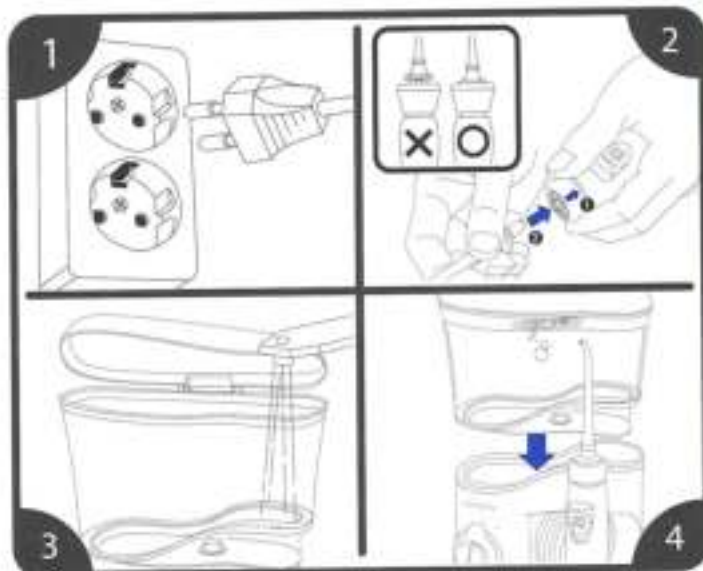
전원 (Power)	AC 100-230V, 50/60Hz
소비전력 (Capacity)	24W
박동수 (Pulsation)	2,200회 / 분 (2,200/minute)
제품규격 (Dimensions)	150 x 90 x 210 mm (W x H x D)
물통용량 (Volume)	600ml
제품무게 (Weight)	710g
모델명 (Model)	AQ-300

## 액세서리 (Accessories)

명칭 (Name)	수량 (Quantity)	가격 (Price)
 아쿠아픽 물통 (Aquapick Water Tank)	1EA	15,000원
 아쿠아픽 손잡이 (Aquapick Handle)	1EA	20,000원
 아쿠아픽 제트팁 (Aquapick Jet Tip)	1SET (4EA) *4 different colors	15,000원
 아쿠아픽 제트팁걸이 (Aquapick Jet Tip Holder)	1SET (4EA)	10,000원
 아쿠아픽 클리닝錠 (Aquapick Cleaning Tablet)	1PK (2EA)	5,000원
 아쿠아픽 혀클리너 (Aquapick Tongue Cleaner)	1PK (4EA) *4 different colors	15,000원

## DIRECTIONS 1

1. Unwind power cord and plug into appropriate power outlet.
2. Attach jet tip into the handle until fit perfectly. If jet tip is not attached correctly, water may leak from the joint of jet tip.  
※ How to attach jet tip: attach jet tip by inserting it into the handle while at the same time pushing down on jet tip (gray) ring piece.
3. Remove the water tank and open the cover to fill the tank with water.  
※ Caution: the temperature of water should not be over 40°C. Hot water may hurt gums.
4. Align tank with mount and press gently until secure.



## DIRECTIONS 2

5. Place water pressure knob at the smallest dot (weakest water pressure level). The water pressure becomes stronger as you move the knob to the right (bigger dots). It is recommended for first time users to use the weakest level, gradually increasing water pressure until desired strength.
6. Make sure the water switch button is in the off (downward) position. Press the power button on to start motor.
7. Lean forward and place jet tip against desired area of mouth.  
Ⓢ Push the water switch button on while jet tip is placed in mouth.

### ⚠ Notice

If any bleeding occurs after using Aquapick, you may have periodontal disease. Continue to use for two weeks, and bleeding should stop. If the bleeding continues, please stop usage and consult your dentist.





# OPERATION

## Washing Steps



1. Place the water tank filled with solution on the aquapick base and turn on the power button switch.
2. Slowly bend your face close over the basin, and keep your face at a 45 degree angle to the basin.
3. Press the jet tip to your mouth to begin irrigating.
4. Push the water switch button on handle to turn on.
5. Since water could spray out, please close your mouth and make a shape of "O~" instead of "E~".

## How To Irrigate The Teeth & Gums



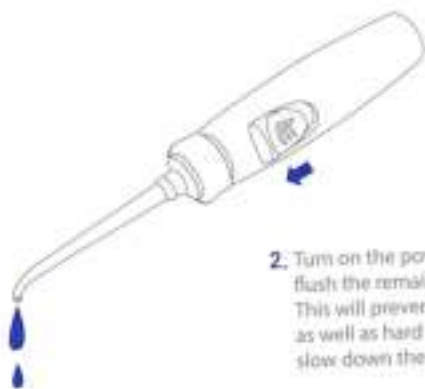
1. Irrigate the teeth and gums by evenly spraying out on the surface, and remove residues stuck between teeth and gums. (Spray even more intensively around implants, braces, prosthetic devices, and false teeth.)
2. Direct the jet stream along the gum line with the jet tip. It will flush away remaining food particles on and between teeth effectively while massaging the gums gently.



## MAINTENANCE 1



1. Take off the cover and pour the remaining water out.

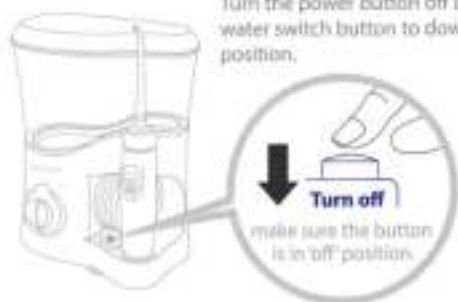


2. Turn on the power for a few seconds to flush the remaining water out of the tank. This will prevent bacteria from growing as well as hard water buildup which will slow down the jet stream flow.

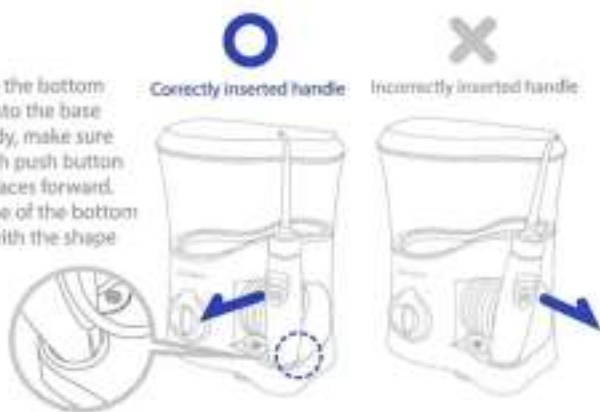
- For more hygienic uses, wipe the main body and handle every week with a dry cloth or a towel.
- As Aquapick jet tip and handle are consumable supplies, we recommend you to replace jet tip every 6 months and handle every 12 months for sanitary purpose.

## MAINTENANCE 2

3. Put the handle back in the holder. Turn the power button off and pull water switch button to downward position.



4. When inserting the bottom of the handle into the base of the main body, make sure the water switch push button on the handle faces forward. Match the shape of the bottom of the handle with the shape in the base for easier storage.



- After use, please remove jet tip and place into jet tip holders.
- When not in use, be sure to disconnect the plug from the outlet.



# TROUBLE-SHOOTING GUIDE

Please try trouble-shooting options before sending in for repair.

## Problem

Aquapick is not turning on.

Motor is not working.

Pump is functioning, but water is not spraying out.

Water pressure is too low.

## Cause

Improper connection with the power source.

Motor may be overheated causing the auto-safety system to be turned on.

The water tank is empty.

Air pressure in the spray tube and handle.

Unsuitable water pressure.

Water tank is not properly placed.

The jet tip is not appropriately equipped with the handle.

## Corrective Action

Unplug and plug in again.

Wait for 20 minutes until the motor is cooled down.

Refill the water tank with water.

While functioning, keep the handle facing downward at a 45 degree angle for about 30 seconds.

Adjust the knob to the most suitable setting.

Check the water tank to see if it is placed in its correct position.

Check if the jet tip is properly equipped with the handle.



## Warning

Please do not take the appliance apart yourself to repair and assemble. If you want to replace a part such as a spray tube, water tank or jet tip, please contact your dealer or authorized service & repair center.



㈜아쿠아픽

서울특별시 금천구 가산디지털1로 171, 20층 (가산동, SK V1 Center)  
Tel: 1588-2809 Fax: 02-6116-2800 E-mail: info@aquapick.com

Aquapick Co., Ltd.

20F, SK V1 Center, 171, Gasan digital 1-ro, Geumcheon-gu, Seoul, Korea  
Tel: +82-2-1588-2809 Fax: +82-2-6116-2800 E-mail: info@aquapick.com

☎ 1588-2809  
고객서비스센터