

► MOTIF
PIANO
ELEGANCE

MOTIF LCR MANUAL



IN ADMIRATION OF MUSIC



RISK OF ELECTRIC SHOCK DO NOT OPEN.
TO REDUCE THE RISK OF ELECTRIC SHOCK,
DO NOT REMOVE THE BACK PANEL.
NO USER-SERVICEABLE PARTS INSIDE.
REFER SERVICING TO QUALIFIED PERSONNEL.



The lightning flash within an equilateral triangle is intended to alert you to the presence of non insulated "dangerous voltage" within the product's enclosure that may be of sufficient magnitude to constitute an electric shock to persons.

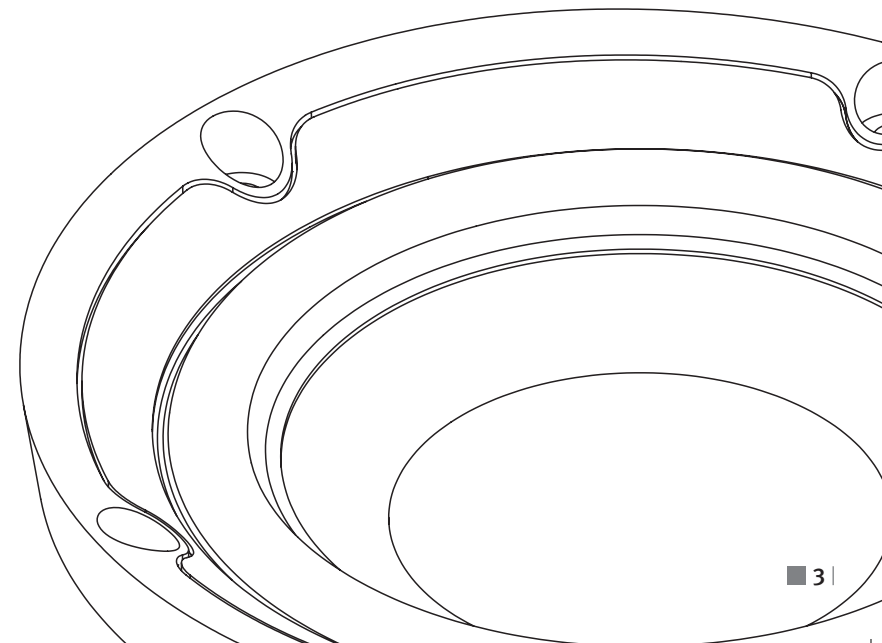


The exclamation point within an equilateral triangle is intended to alert you to the presence of important operating and maintenance (servicing) instructions in the literature accompanying the appliance.

- 1 Read instructions - all the safety and operating instructions should be read before the appliance is operated.
- 2 Retain instructions - the safety and operating instructions should be retained for future reference.
- 3 Heed warnings - all warnings on the appliance and in the operating instructions should be adhered to.
- 4 Follow instructions - all operating and use instructions should be followed.
- 5 Water and moisture - the appliance should not be used near water - for example, near a bathtub, washbowl, kitchen sink, laundry tub, in a wet basement, or near a swimming pool and the like.
- 6 Carts and stands - the appliance should be used only with a cart or stand if recommended by the manufacturer.
- 7 Wall or ceiling mounting - the appliance should be mounted to a wall or ceiling only as recommended by the manufacturer.
- 8 Ventilation - the appliance should be situated so that its location or position does not interfere with proper ventilation. For example, the appliance should not be situated on a bed, sofa, rug, or similar surface that may block the ventilation openings; or placed in a built-in installation, such as a bookcase or cabinet, that may impede the flow of air through the ventilation openings.
- 9 Heat - the appliance should be situated away from heat sources such as radiators, heat registers, stoves, or other appliances that produce heat.
- 10 Power sources - the appliance should be connected to a power supply only of the type described in the operating instructions or as marked on the appliance.
- 11 Power cord protection - power-supply cords should be routed so that they are not likely to be walked on or pinched by items placed on or against them, paying particular attention to cords at plugs, convenience receptacles and the point where they exit from appliance.
- 12 Cleaning - Use only a soft, damp cloth to wipe off dust and grease.
- 13 Non-use periods - the power cord of the appliance should be unplugged from the outlet when left unused for a long period of time.
- 14 Object and liquid entry - care should be taken so that objects do not fall and liquids are not spilled into the enclosure through openings.
- 15 Damage requiring service - the appliance should be serviced by qualified personnel when:
 - a) The power-supply cord or the plug has been damaged; or
 - b) Objects have fallen, or liquid has been spilled into the appliance; or
 - c) The appliance has been exposed to rain; or
 - d) The appliance does not appear to operate normally, or exhibits a marked change in performance; or
 - e) The appliance has been dropped, or the enclosure damaged.
- 16 Servicing - the user should not attempt to service the appliance beyond that described in the operating instructions. All other servicing should be referred to qualified service personnel.

CONTENTS

INTRODUCTION	4
UNPACKING	5
BREAK-IN	5
POSITIONING	6
CONNECTING	7
MOUNTING	8
TEMPLATE	8
CLEANING & MAINTENANCE	10
AVOID DIRECT SUNLIGHT	10
DISPOSAL	10
POWER AND ACOUSTIC PRESSURE	11
TECHNICAL SPECIFICATIONS	12



INTRODUCTION

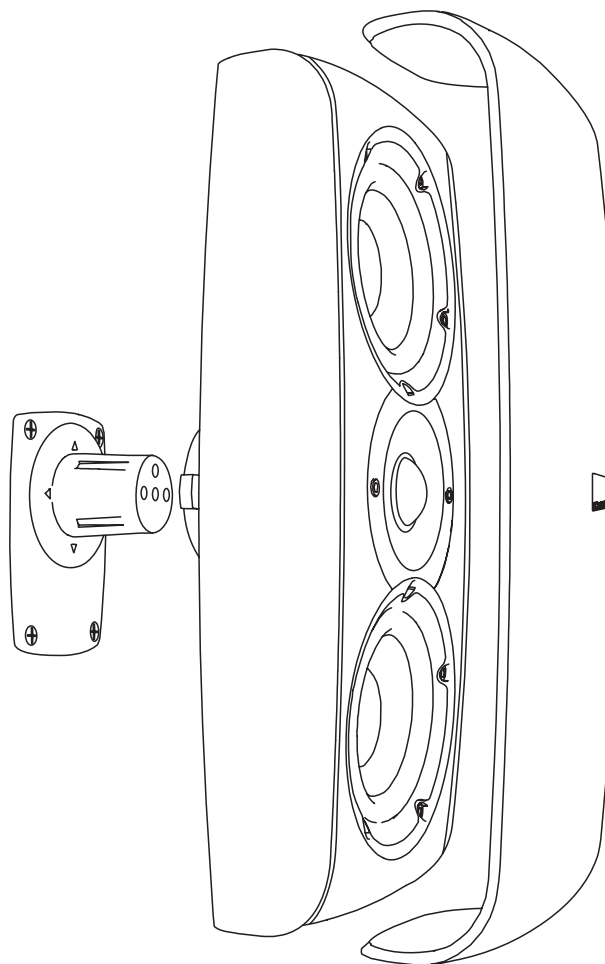
Congratulations on your selection of DALI MOTIF LCR loudspeakers.

It is important to us that your new loudspeaker is set up and connected optimally. We strongly recommend that you read this manual and follow its instructions before unpacking and installing the speaker.

This manual contains instructions for setup and connection, as well as tips and advice on how to get the most out of your DALI MOTIF LCR loudspeaker.

Remember to sign up for the DALI newsletter at www.dali.dk. DALI is acclaimed around the world for unique loudspeakers built to our uncompromising standards for design and performance. The goal for every single DALI loudspeaker is always our foremost commitment: To create a listening experience in your home that will make you forget time and place.

Enjoy.



UNPACKING THE MOTIF LCR

The following parts are enclosed in the box:

- ▶ DALI MOTIF LCR loudspeaker
- ▶ Grille
- ▶ Click'n Connect wall-mount (pat. pend.)
- ▶ 1 mm Allen key
- ▶ Mounting templates
- ▶ Manual

Be careful not to damage the contents when you unpack the parts. We suggest you retain the packing for future use.

ATTENTION!

Take care not to scratch the high-gloss finish of the DALI MOTIF LCR enclosure.

BREAK-IN

Like any mechanical system (e.g. like a new car), a loudspeaker requires a "break-in" period to perform at its best. You will experience a gradual increase in sound quality during the first period of use. The break-in period will vary depending on use and playback volume (approximately 50 hours at medium volume is recommended). Unlike other mechanical systems, the life-span of a loudspeaker is increased by normal, regular playback of music.



IN ADMIRATION OF MUSIC



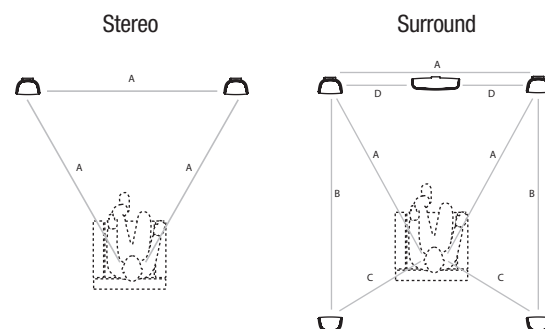
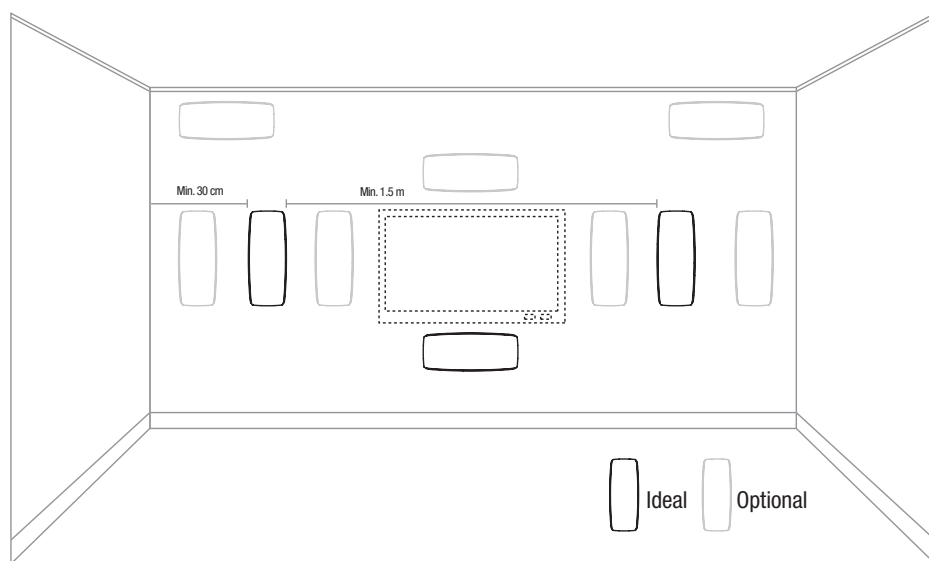
■ WARNING

NEVER place the DALI MOTIF LCR with the front facing down, as this will cause deformation of the silk dome tweeter, which may damage its performance.

POSITIONING

Before setting up and connecting your new DALI MOTIF LCR loudspeakers, you should find the best possible placement relative to your listening position. It is a good idea to follow these simple guidelines:

- Ideally, the DALI MOTIF LCR speakers should be placed at the corners of an equilateral triangle with the (left and right stereo) speakers minimum 1,5 meters (60") apart to achieve good stereo separation.
- Avoid placing objects between the loudspeakers and the listening position. Obstacles can have a detrimental effect on tonal balance.



CONNECTING THE MOTIF LCR

Before connecting or disconnecting any cables, always turn off the amplifier to avoid electrical shock or damage to your equipment.

Channel the speaker cable through the groove in the Click'n Connect wall-mount. Ensure the positive terminal on the wall-mount (marked '+' and coloured red) is connected to the positive output terminal of the amplifier and negative (marked '-' and coloured black) to negative.

Incorrect connection will result in poor stereo imaging and loss of low-frequency output. Always make sure the terminals are screwed down tight.

Always use cables of the same type and length for left and right channels. We recommend using special speaker cables from DALI, available from your dealer.

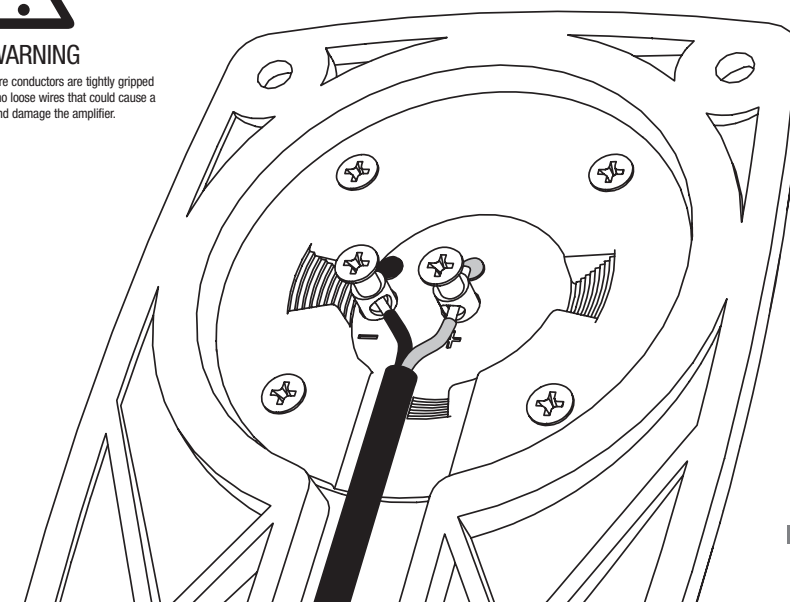
ATTENTION!

If you are using DALI MOTIF LCR in a surround system, follow the instructions included with your surround amplifier, as even a single loudspeaker connected out-of-phase will make the bass weaker and the soundstage unfocused.



WARNING

Make sure that the bare conductors are tightly gripped by the terminals with no loose wires that could cause a short circuit and damage the amplifier.



MOUNTING

The DALI MOTIF LCR can be mounted either horizontally or vertically, using the supplied Click'n Connect wall-mount.

ATTENTION!

Please refer to enclosed mounting template for orientation of the Click'n Connect wall-mount regarding horizontal vs. vertical mounting.



■ WARNING
Do NOT mount the DALI MOTIF LCR on the ceiling.
The supplied Click'n Connect wall-mount is
NOT INTENDED FOR CEILING-MOUNT!

TEMPLATE

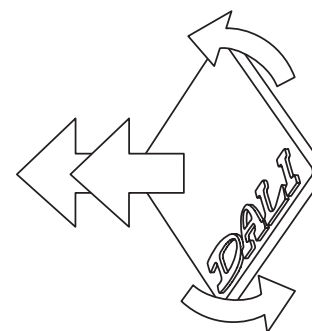
Using the enclosed mounting template, carefully mark the four screw positions on the mounting surface. To ensure an aesthetically pleasing result, we recommend that you use a spirit level to ensure that the Click'n Connect is mounted absolutely level.

After the speaker cables have been properly attached, screw in the four screws in the pre-drilled keyholes and tighten them - use rawlplugs if necessary. Carefully slide the speaker onto the Click'n Connect wall-mount, until you hear an engaging click from the spring-loaded button. This automatically establishes the correct electrical connection between the speaker and the amplifier.

To disconnect DALI MOTIF LCR, simply press the spring-loaded button on the Click'n Connect wall-mount and pull the speaker gently towards you.

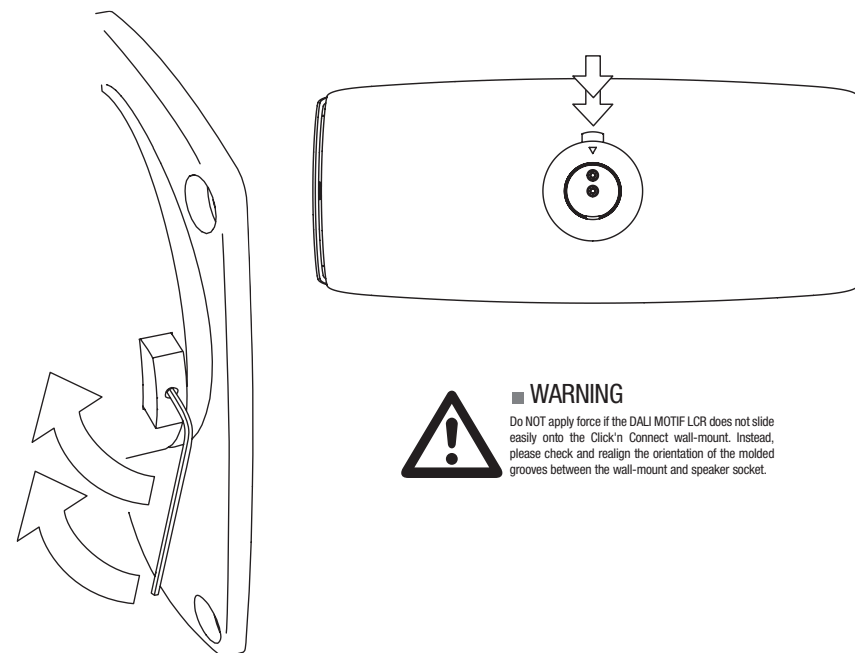
NOTE!

The DALI logo on the front grill can be turned sideways according to the orientation of your MOTIF LCR. Simply press and release the spring-loaded DALI logo, turn it in the direction you want and repress. Done.



ATTENTION!

As a means of theft prevention, your DALI MOTIF LCR can be further secured to the Click'n Connect wall-mount. Using the supplied 1.5 mm Allen key, turn the Allen screw on the spring-loaded button clockwise. This will lock the button and prevent the DALI MOTIF LCR from being disconnected from the Click'n Connect wall-mount.



■ WARNING
Do NOT apply force if the DALI MOTIF LCR does not slide easily onto the Click'n Connect wall-mount. Instead, please check and realign the orientation of the molded grooves between the wall-mount and speaker socket.

CLEANING & MAINTENANCE

Clean the high-gloss lacquer with a soft, dry micro-fibre cloth. If the rubber-painted front baffle is dirty, wipe with a soft, damp micro-fibre cloth. Be careful not to damage the two 4.5" midrange drivers when wiping them, as they are very fragile. Avoid wiping the dome tweeter! When removed from the speaker baffle, the grille can be softly vacuumed and wiped with a well-wrung, lint-free cloth with mild all-purpose cleaner.

AVOID DIRECT SUNLIGHT

The surfaces of the DALI MOTIF LCR are sensitive to sunlight, which might cause colour fading over time. To reduce colour fading, we recommend avoiding exposing the loudspeaker to direct sunlight.

DISPOSAL

If you want to dispose this product, do not mix it with general household waste. There is a separate collection system for used electronic products in accordance with legislation that requires proper treatment, recovery and recycling. Private households in the EU member states, Switzerland and Norway may return their used electronic products free of charge to designated collection facilities or to a retailer (if you purchase a similar new one). For countries not mentioned above, please contact your local authorities for the correct method of disposal. By doing so, you will ensure that your disposed product undergoes the necessary treatment, recovery and recycling and thus prevent potential negative effects on the environment and human health.



POWER AND ACOUSTIC PRESSURE

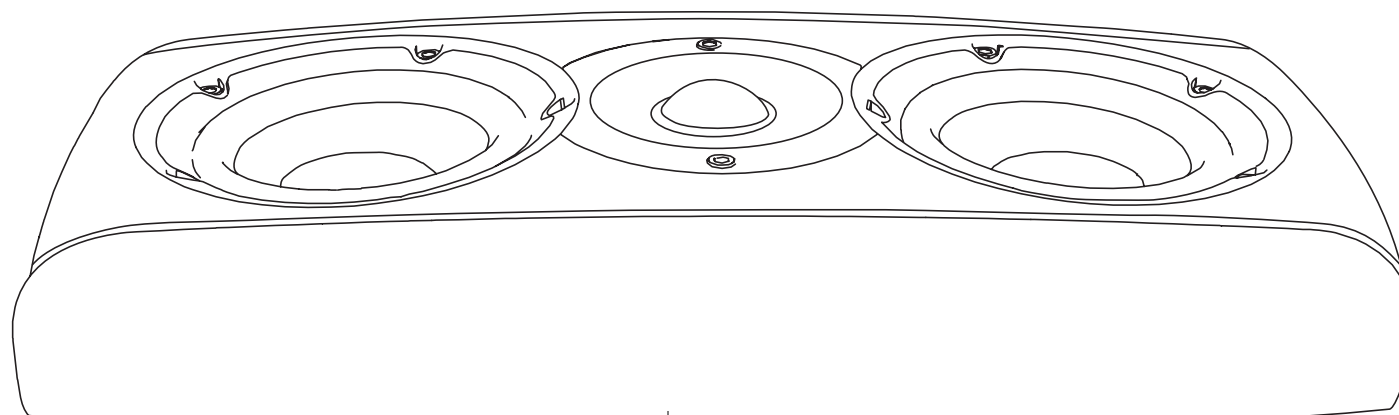
How loud a speaker is able to play and still sound good is totally dependent on the signal it has to reproduce. This also means that you cannot define an unequivocal playback level when comparing different speakers.

An abundance of pure, undistorted output from a large amplifier is better than a distorted signal from a small amplifier stretched beyond its capacity. The signal from a distorting (clipping) amplifier puts a heavy strain on the high-frequency driver. Consequently, speakers are most often damaged by small amplifiers forced to work too hard - and very rarely by large amplifiers, which are practically running idle.

We also recommend that the tone controls generally be set to the neutral position and that you achieve your desired sound image through correct positioning of the speakers. Ensuring that you keep the volume low enough to keep the sound clear and undistorted will minimize the strain on both speakers and amplifier.

ATTENTION!

We recommend that you use a high quality amplifier or surround receiver with DALI MOTIF LCR, as the quality of the reproduced sound will benefit from it. DALI MOTIF LCR is generally designed to work well with the amplifier that is integrated into many television sets, but in most cases, sound quality will benefit from using a good, external amplifier.



TECHNICAL SPECIFICATIONS

There are countless methods for measuring speakers. However, none of them tell you anything useful about how a speaker really sounds. Only your ears should decide whether one speaker sounds better than another. Like all our speakers, DALI MOTIF LCR is designed to reproduce music as honestly as possible.

Enjoy your DALI MOTIF LCR.

Frequency Range [+/- 3dB] [Hz]	78 – 25,000
Crossover Frequency [Hz]	3,000
Sensitivity [2.83V/1m] [dB]	89
Nominal impedance [ohm]	6.0
Maximum SPL [dB]	107
Recommended Amp. Power [W]	15-120
Terminals	Integrated in Click'n Connect wall mount
High Frequency Drivers [mm]	28
Low Frequency Drivers [inch]	2 x 4.5
Enclosure Type	Closed
Dimensions [HxWxD] [cm]	38.5 x 15.7 x 10.0
Dimensions [HxWxD] [inch]	15.2 x 6.2 x 3.9
Weight [kg/lb]	3.55 / 7.8
Accessories	Click'n Connect wall-mount, templates, 1.5 mm Allen key
Finishes	High gloss lacquer, white or black



IN ADMIRATION OF MUSIC

DALI UK +44 (0)845 644 3537 ■ DALI USA +1 303 464 7000 ■ DALI Denmark +45 9672 1155 ■ www.dali.dk