

Table of Contents

1.	Summary of Test Results	7
2.	General Test Information	8
2.1.	Description of EUT	8
2.2.	Primary function of EUT	8
2.3.	Port of EUT	8
2.4.	Accessories of EUT	9
2.5.	Block diagram EUT configuration for test	9
2.6.	Decision of final test mode	9
2.7.	Deviations of test standard	9
2.8.	Test environment conditions	10
2.9.	Test laboratory	10
2.10.	Measurement uncertainty	10
3.	Conducted Emission Test Report (AC Mains Power Ports)	11
3.1.	General information	11
3.2.	Test equipment	11
3.3.	Reference standard	11
3.4.	Block diagram of test setup	11
3.5.	Limits	12
3.6.	Assistant equipment used for test	12
3.7.	Test procedure	13
3.8.	Test result	13
3.9.	Test photo	18
4.	Radiated Emissions Test	19
4.1.	General information	19
4.2.	Test equipment	19
4.3.	Reference standard	19
4.4.	Block diagram of test setup	20
4.5.	Limits	22
4.6.	Assistant equipment used for test	22
4.7.	Test procedure	22
4.8.	Test result	23
4.9.	Test photo	31
5.	Harmonic Current and Voltage Fluctuations & Flicker Test Report	33
5.1.	General information	33
5.2.	Test equipment	33
5.3.	Test standard	33
5.4.	Block diagram of test setup	33

5.5.	Harmonic current limits.....	34
5.6.	Voltage fluctuations & flicker Limit.....	35
5.7.	Assistant equipment used for test.....	35
5.8.	Test procedure.....	35
5.9.	Test result.....	35
5.10.	Test photo.....	37
6.	Electrostatic Discharge Test Report.....	38
6.1.	General information.....	38
6.2.	Test equipment.....	38
6.3.	Test and reference standards.....	38
6.4.	Block diagram of test setup.....	38
6.5.	Test levels and performance criterion.....	39
6.6.	Assistant equipment used for test.....	39
6.7.	Test procedure.....	39
6.8.	Test result.....	40
6.9.	Test photo.....	42
7.	Continuous Radio Frequency Disturbances.....	43
7.1.	General information.....	43
7.2.	Test equipment.....	43
7.3.	Test and reference standards.....	43
7.4.	Block diagram of test setup.....	44
7.5.	Test levels and performance criterion.....	44
7.6.	Assistant equipment used for test.....	45
7.7.	Test procedure.....	45
7.8.	Test result.....	46
7.9.	Test photo.....	47
8.	Electrical Fast Transients (EFT) Test Report.....	48
8.1.	General information.....	48
8.2.	Test equipment.....	48
8.3.	Test and reference standards.....	48
8.4.	Block diagram of test setup.....	48
8.5.	Test levels and performance criterion.....	49
8.6.	Assistant equipment used for test.....	49
8.7.	Test procedure.....	49
8.8.	Test result.....	50
8.9.	Test photo.....	50
9.	Surges Test Report.....	51
9.1.	General information.....	51
9.2.	Test equipment.....	51

9.3.	Test and reference standards	51
9.4.	Block diagram of test setup	51
9.5.	Test levels and performance criterion	51
9.6.	Assistant equipment used for test	52
9.7.	Test procedure.....	52
9.8.	Test result	53
9.9.	Test photo	53
10.	Continuous Conducted Disturbances	54
10.1.	General information	54
10.2.	Test equipment.....	54
10.3.	Test and reference standards	54
10.4.	Block diagram of test setup	54
10.5.	Test levels and performance criterion	55
10.6.	Assistant equipment used for test	56
10.7.	Test procedure.....	56
10.8.	Test result	57
10.9.	Test photo	57
11.	Power-Frequency Magnetic Fields	58
11.1.	General information	58
11.2.	Test equipment.....	58
11.3.	Test and reference standards	58
11.4.	Block diagram of test setup	58
11.5.	Test levels and performance criterion	58
11.6.	Assistant equipment used for test	59
11.7.	Test procedure.....	59
11.8.	Test result	59
11.9.	Test photo	60
12.	Voltage Dips and Interruptions	61
12.1.	General information	61
12.2.	Test equipment.....	61
12.3.	Test and reference standards	61
12.4.	Block diagram of test setup	61
12.5.	Test levels and performance criterion	61
12.6.	Assistant equipment used for test	62
12.7.	Test procedure.....	62
12.8.	Test result	62
12.9.	Test photo	63
13.	Photos of the EUT.....	64

Test Report Declare

Applicant	:	Harman International Industries, Inc.
Address	:	8500 Balboa Boulevard, Northridge, CA 91329, UNITED STATES
Equipment Under Test	:	Portable Bluetooth Speaker
Model No.	:	CHARGE5H
Trade Mark	:	JBL
Manufacturer	:	Harman International Industries, Inc.
Address	:	8500 Balboa Boulevard, Northridge, CA 91329, UNITED STATES

Test Standard Used:

EN 55032:2015, EN 55035:2017, EN IEC 61000-3-2:2019, EN 61000-3-3:2013+A1:2019

Test Procedure Used:

EN 61000-4-2:2009, EN 61000-4-3:2006+A2:2010, EN 61000-4-4:2012,
EN 61000-4-5: 2014/A1: 2017, EN 61000-4-6:2014/AC:2015, EN 61000-4-8:2010,
EN 61000-4-11:2004/A1:2017

We Declare:

The equipment described above is tested by Dongguan Dongdian Testing Service Co., Ltd. and in the configuration tested the equipment complied with the standards specified above. The test results are contained in this test report and Dongguan Dongdian Testing Service Co., Ltd. is assumed of full responsibility for the accuracy and completeness of these tests.

After test and evaluation, our opinion is that the equipment in accordance with above standards about the electromagnetic compatibility requirements of Directive 2014/30/EU.

Report No.:	DDT-R20070616-1E2		
Date of Receipt:	Oct. 15, 2020	Date of Test:	Oct. 15, 2020 ~ Nov. 03, 2020

Prepared By:




Jerry Xue/Engineer

Approved By:



Damon Hu/EMC Manager

Note: This report applies to above tested sample only. This report shall not be reproduced in parts without written approval of Dongguan Dongdian Testing Service Co., Ltd.

Revision History

Rev.	Revisions	Issue Date	Revised By
---	Initial issue	Nov. 03, 2020	

1. Summary of Test Results

Description of Test Item	Standard	Result
Conducted emissions from the AC mains power ports	EN 55032:2015	PASS
Asymmetric mode conducted emissions	EN 55032:2015	N/A ^a
Conducted differential voltage emissions	EN 55032:2015	N/A ^a
Radiated emissions test	EN 55032:2015	PASS
Harmonic current emissions	EN IEC 61000-3-2:2019	N/A ^b
Voltage fluctuations & flicker	EN 61000-3-3:2013+A1:2019	PASS
Electrostatic discharge (ESD)	EN 55035:2017; EN 61000-4-2:2009	PASS
Continuous RF electromagnetic field disturbances	EN 55035:2017; EN 61000-4-3:2006+A1:2008+A2:2010	PASS
Electrical fast transients / burst	EN 55035:2017; EN 61000-4-4:2012	PASS
Surges	EN 55035:2017; EN 61000-4-5: 2014/AC: 2017	PASS
Continuous induced RF disturbances	EN 55035:2017; EN 61000-4-6:2014/AC:2015	PASS
Power-frequency magnetic fields	EN 55035:2017; EN 61000-4-8:2010	PASS
Voltage dips and interruptions	EN 55035:2017; EN 61000-4-11:2004/A1:2017	PASS

Note: N/A is an abbreviation for Not Applicable, and means this item is not applicable for this device.

a: This product does not have such a port.

b: This product is not defined as lighting equipment, and has rated power less than 75W, therefore, no limit apply according to EN IEC 61000-3-2 harmonics currents emissions test.

2.4. Accessories of EUT

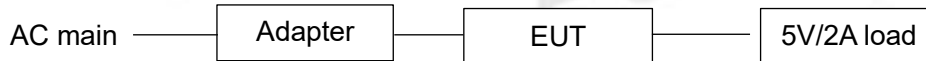
Description of Accessories	Manufacturer	Model number	Description	Remark
USB cable	Harman	N/A	N/A	Length: 1.2m, unshielded

Battery information

Description of Accessories	Manufacturer	Model number	Description	Remark
Rechargeable Li-ion Battery	ICON ENERGY SYSTEM(SHENZHEN)CO., LTD	IAA011NA	Rated Capacity: 3.6V 7500mAh 27.0Wh	N/A

2.5. Block diagram EUT configuration for test

Mode 1: Charging + 5V/2A load mode



Mode 2: 5V/2A load mode



2.6. Decision of final test mode

Emission	Conducted Emission	Mode 1: Charging + 5V/2A load mode
	Radiated emission	Mode 1: Charging + 5V/2A load mode Mode 2: 5V/2A load mode
	Voltage fluctuation and flicker	Mode 1: Charging + 5V/2A load mode
Immunity	Electrostatic discharge	Mode 1: Charging + 5V/2A load mode Mode 2: 5V/2A load mode
	Continuous RF electromagnetic field disturbances	Mode 1: Charging + 5V/2A load mode Mode 2: 5V/2A load mode
	Electrical fast transients / burst	Mode 1: Charging + 5V/2A load mode
	Surges	Mode 1: Charging + 5V/2A load mode
	Continuous induced RF disturbances	Mode 1: Charging + 5V/2A load mode
	Power-frequency magnetic fields	Mode 1: Charging + 5V/2A load mode Mode 2: 5V/2A load mode
	Voltage dips and interruptions	Mode 1: Charging + 5V/2A load mode

2.7. Deviations of test standard

No deviation.

2.8. Test environment conditions

During the measurement the environmental conditions were within the listed ranges:

Temperature range:	21-25°C
Humidity range:	40-75%
Pressure range:	86-106kPa

2.9. Test laboratory

Dongguan Dongdian Testing Service Co., Ltd.

Addr.: No. 17, Zongbu Road 2, Songshan Lake Sci&Tech, Industry Park, Dongguan City, Guangdong Province, China, 523808

Tel.: +86-0769-38826678, Http://www.dgddt.com, Email: ddt@dgddt.com

CNAS Accreditation No. L6451; A2LA Accreditation No. 3870.01

FCC Designation Number: CN1182; Test Firm Registration Number: 540522

Industry Canada site registration number: 10288A-1

2.10. Measurement uncertainty

Test Item	Uncertainty
Conducted disturbance at mains terminals	3.32dB (150KHz-30MHz)
Uncertainty for telecommunication port conduction emission test	AAN with aLCL = 55 ... 40 dB c: 3.64dB AAN with aLCL = 65 ... 50 dB c: 4.08dB AAN with aLCL = 75 ... 60 dB c: 4.56dB
Uncertainty for 3m Radiation Emission test (30MHz-1GHz)	4.70 dB (Antenna Polarize: V)
	4.84 dB (Antenna Polarize: H)
Uncertainty for 10m Radiation Emission test (30MHz-1GHz)	4.172 dB (Antenna Polarize: V)
	4.172 dB (Antenna Polarize: H)
Uncertainty for Radiation disturbance test (1GHz to 6GHz)	4.10dB(1-6GHz)
Temperature	0.4°C
Humidity	2%

Note: This uncertainty represents an expanded uncertainty expressed at approximately the 95% confidence level using a coverage factor of k=2.

3.7. Test procedure

- (1) The EUT was placed on a non-metallic table, 80cm above the ground plane.
- (2) Setup the EUT and assistant equipment as shown in section 2.5 and 3.6.
- (3) The EUT's power adapter was connected to the power mains through a line impedance stabilization network (L.I.S.N). which this provided a 50-ohm coupling impedance for the EUT (Please refer to the block diagram of the test setup and photographs). Both sides of power line were checked for maximum conducted disturbance. In order to find the maximum emission, the relative positions of equipment and all of the interface cables were changed according to EN 55032 on conducted disturbance emission test.
- (4) The bandwidth of test receiver is set at 9 kHz.
- (5) The frequency range from 150 kHz to 30MHz is checked.

3.8. Test result

PASS. (See below detailed test result)

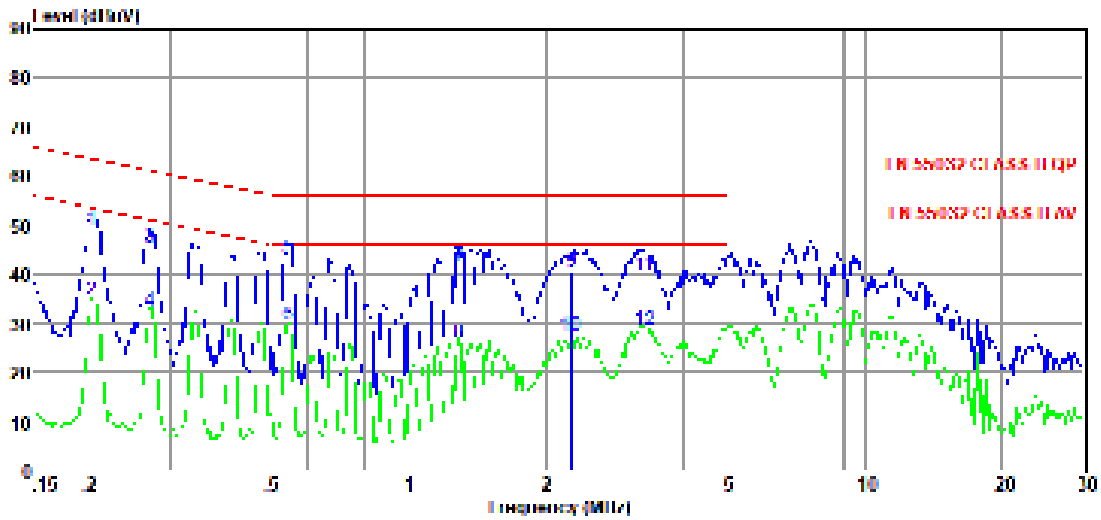
Note 1: All emissions not reported below are too low against the prescribed limits.

Note 2: "-----" means Peak detection; "-----" means Average detection.

TR-4-E-010 Conducted Emission Test Result

Test Site : DDT 1# Shield Room D:\2020 CE report data\Q20070616-1E\20201024 CE.EM6
Test Date : 2020-10-24 **Tested By** : Lori Mi
EUT : Portable Bluetooth Speaker **Model Number** : CHARGE5H
Power Supply : AC 240V/50Hz **Test Mode** : Charging + 5V/2A load mode
Condition : TEMP:24.8°C, RH:51.8%, BP:101.4kPa **LISN** : 2019 ENV216 1#/LINE
Memo :

Data: 2



Item (Mark)	Freq. (MHz)	Read Level (dBµV)	LISN Factor (dB)	Cable Loss (dB)	Pulse Limiter Factor (dB)	Result Level (dBµV)	Limit Line (dBµV)	Over Limit (dB)	Detector	Phase
1	0.20	29.64	9.60	0.02	9.86	49.12	63.49	-14.37	QP	LINE
2	0.20	15.18	9.60	0.02	9.86	34.66	53.49	-18.83	Average	LINE
3	0.27	26.04	9.60	0.02	9.86	45.52	61.07	-15.55	QP	LINE
4	0.27	13.03	9.60	0.02	9.86	32.51	51.07	-18.56	Average	LINE
5	0.54	23.85	9.60	0.02	9.86	43.33	56.00	-12.67	QP	LINE
6	0.54	10.33	9.60	0.02	9.86	29.81	46.00	-16.19	Average	LINE
7	1.30	22.31	9.60	0.04	9.86	41.81	56.00	-14.19	QP	LINE
8	1.30	6.60	9.60	0.04	9.86	26.10	46.00	-19.90	Average	LINE
9	2.27	21.01	9.60	0.06	9.86	40.53	56.00	-15.47	QP	LINE
10	2.27	8.11	9.60	0.06	9.86	27.63	46.00	-18.37	Average	LINE
11	3.29	20.10	9.60	0.07	9.87	39.64	56.00	-16.36	QP	LINE
12	3.29	9.18	9.60	0.07	9.87	28.72	46.00	-17.28	Average	LINE

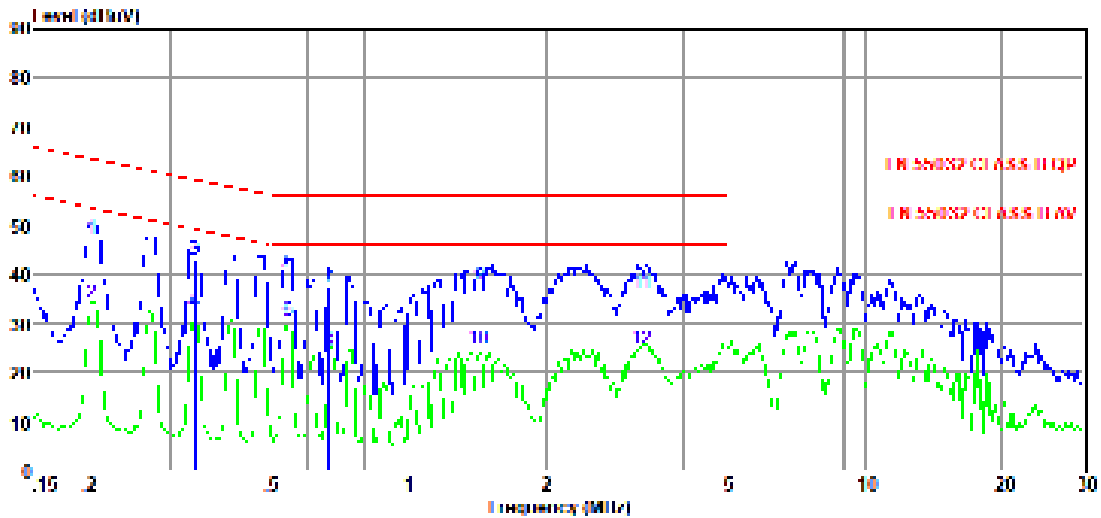
Note:

1. Result Level = Read Level + LISN Factor + Pulse Limiter Factor + Cable loss.
2. If QP Result complies with AV limit, AV Result is deemed to comply with AV limit.
3. Test setup: RBW: 200 Hz (9 kHz—150 kHz), 9 kHz (150 kHz—30 MHz).
4. Step size: 80Hz (0.009MHz-0.15MHz), 4 kHz (0.15MHz-30MHz), Scan time: auto.

TR-4-E-010 Conducted Emission Test Result

Test Site : DDT 1# Shield Room D:\2020 CE report data\Q20070616-1E\20201024 CE.EM6
Test Date : 2020-10-24 **Tested By** : Lori Mi
EUT : Portable Bluetooth Speaker **Model Number** : CHARGE5H
Power Supply : AC 240V/50Hz **Test Mode** : Charging + 5V/2A load mode
Condition : TEMP:24.8°C, RH:51.8%, BP:101.4kPa **LISN** : 2019 ENV216 1#/NEUTRAL
Memo :

Data: 4



Item (Mark)	Freq. (MHz)	Read Level (dBµV)	LISN Factor (dB)	Cable Loss (dB)	Pulse Limiter Factor (dB)	Result Level (dBµV)	Limit Line (dBµV)	Over Limit (dB)	Detector	Phase
1	0.20	27.91	9.60	0.02	9.86	47.39	63.49	-16.10	QP	NEUTRAL
2	0.20	14.47	9.60	0.02	9.86	33.95	53.49	-19.54	Average	NEUTRAL
3	0.34	23.52	9.60	0.02	9.86	43.00	59.22	-16.22	QP	NEUTRAL
4	0.34	13.06	9.60	0.02	9.86	32.54	49.22	-16.68	Average	NEUTRAL
5	0.54	20.85	9.60	0.02	9.86	40.33	56.00	-15.67	QP	NEUTRAL
6	0.54	11.14	9.60	0.02	9.86	30.62	46.00	-15.38	Average	NEUTRAL
7	0.67	17.76	9.60	0.03	9.86	37.25	56.00	-18.75	QP	NEUTRAL
8	0.67	4.82	9.60	0.03	9.86	24.31	46.00	-21.69	Average	NEUTRAL
9	1.43	18.22	9.60	0.04	9.86	37.72	56.00	-18.28	QP	NEUTRAL
10	1.43	5.20	9.60	0.04	9.86	24.70	46.00	-21.30	Average	NEUTRAL
11	3.26	16.78	9.60	0.07	9.87	36.32	56.00	-19.68	QP	NEUTRAL
12	3.26	5.07	9.60	0.07	9.87	24.61	46.00	-21.39	Average	NEUTRAL

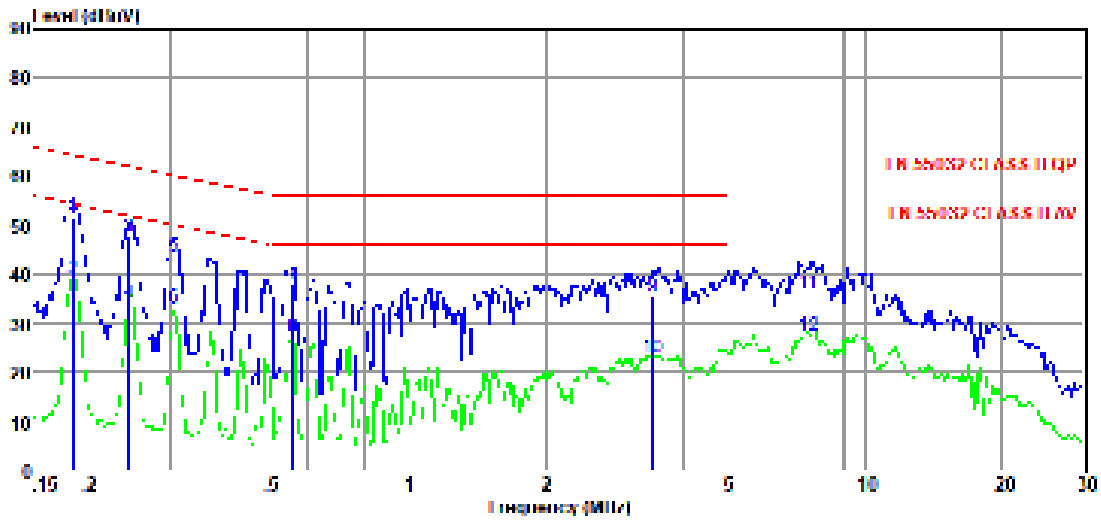
Note:

1. Result Level = Read Level + LISN Factor + Pulse Limiter Factor + Cable loss.
2. If QP Result complies with AV limit, AV Result is deemed to comply with AV limit.
3. Test setup: RBW: 200 Hz (9 kHz—150 kHz), 9 kHz (150 kHz—30 MHz).
4. Step size: 80Hz (0.009MHz-0.15MHz), 4 kHz (0.15MHz-30MHz), Scan time: auto.

TR-4-E-010 Conducted Emission Test Result

Test Site : DDT 1# Shield Room D:\2020 CE report data\Q20070616-1E\20201024 CE.EM6
Test Date : 2020-10-24 **Tested By** : Lori Mi
EUT : Portable Bluetooth Speaker **Model Number** : CHARGE5H
Power Supply : AC 120V/60Hz **Test Mode** : Charging + 5V/2A load mode
Condition : TEMP:24.8°C, RH:51.8%, BP:101.4kPa **LISN** : 2019 ENV216 1#/NEUTRAL
Memo :

Data: 6



Item (Mark)	Freq. (MHz)	Read Level (dBµV)	LISN Factor (dB)	Cable Loss (dB)	Pulse Limiter Factor (dB)	Result Level (dBµV)	Limit Line (dBµV)	Over Limit (dB)	Detector	Phase
1	0.18	32.18	9.60	0.02	9.86	51.66	64.33	-12.67	QP	NEUTRAL
2	0.18	19.51	9.60	0.02	9.86	38.99	54.33	-15.34	Average	NEUTRAL
3	0.24	28.30	9.60	0.02	9.86	47.78	62.00	-14.22	QP	NEUTRAL
4	0.24	14.49	9.60	0.02	9.86	33.97	52.00	-18.03	Average	NEUTRAL
5	0.31	24.23	9.60	0.02	9.86	43.71	60.06	-16.35	QP	NEUTRAL
6	0.31	13.71	9.60	0.02	9.86	33.19	50.06	-16.87	Average	NEUTRAL
7	0.56	18.22	9.60	0.02	9.86	37.70	56.00	-18.30	QP	NEUTRAL
8	0.56	7.86	9.60	0.02	9.86	27.34	46.00	-18.66	Average	NEUTRAL
9	3.44	15.63	9.60	0.07	9.87	35.17	56.00	-20.83	QP	NEUTRAL
10	3.44	3.34	9.60	0.07	9.87	22.88	46.00	-23.12	Average	NEUTRAL
11	7.53	16.21	9.60	0.10	9.88	35.79	60.00	-24.21	QP	NEUTRAL
12	7.53	8.03	9.60	0.10	9.88	27.61	50.00	-22.39	Average	NEUTRAL

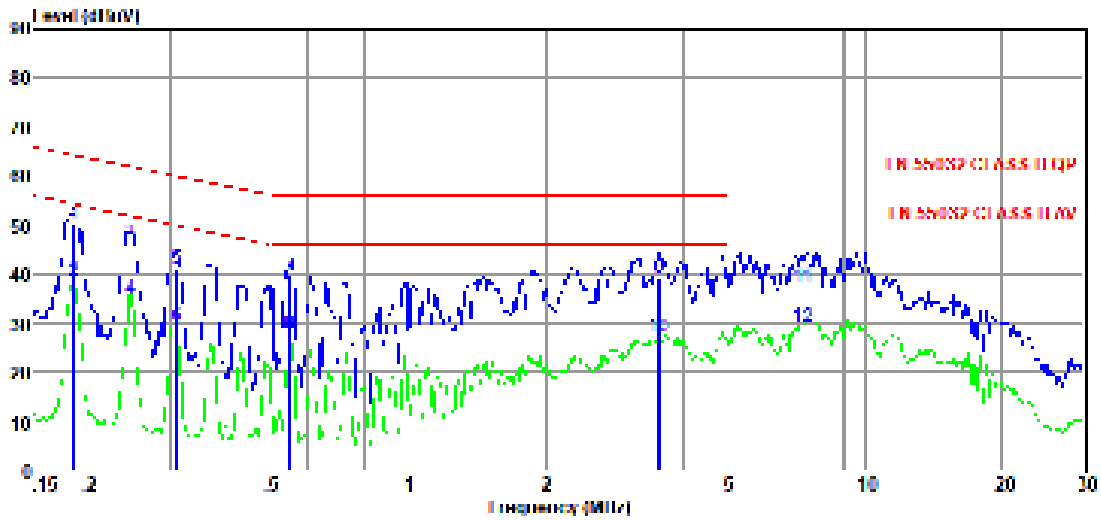
Note:

1. Result Level = Read Level + LISN Factor + Pulse Limiter Factor + Cable loss.
2. If QP Result complies with AV limit, AV Result is deemed to comply with AV limit.
3. Test setup: RBW: 200 Hz (9 kHz—150 kHz), 9 kHz (150 kHz—30 MHz).
4. Step size: 80Hz (0.009MHz-0.15MHz), 4 kHz (0.15MHz-30MHz), Scan time: auto.

TR-4-E-010 Conducted Emission Test Result

Test Site : DDT 1# Shield Room D:\2020 CE report data\Q20070616-1E\20201024 CE.EM6
Test Date : 2020-10-24 **Tested By** : Lori Mi
EUT : Portable Bluetooth Speaker **Model Number** : CHARGE5H
Power Supply : AC 120V/60Hz **Test Mode** : Charging + 5V/2A load mode
Condition : TEMP:24.8°C, RH:51.8%, BP:101.4kPa **LISN** : 2019 ENV216 1#/LINE
Memo :

Data: 8

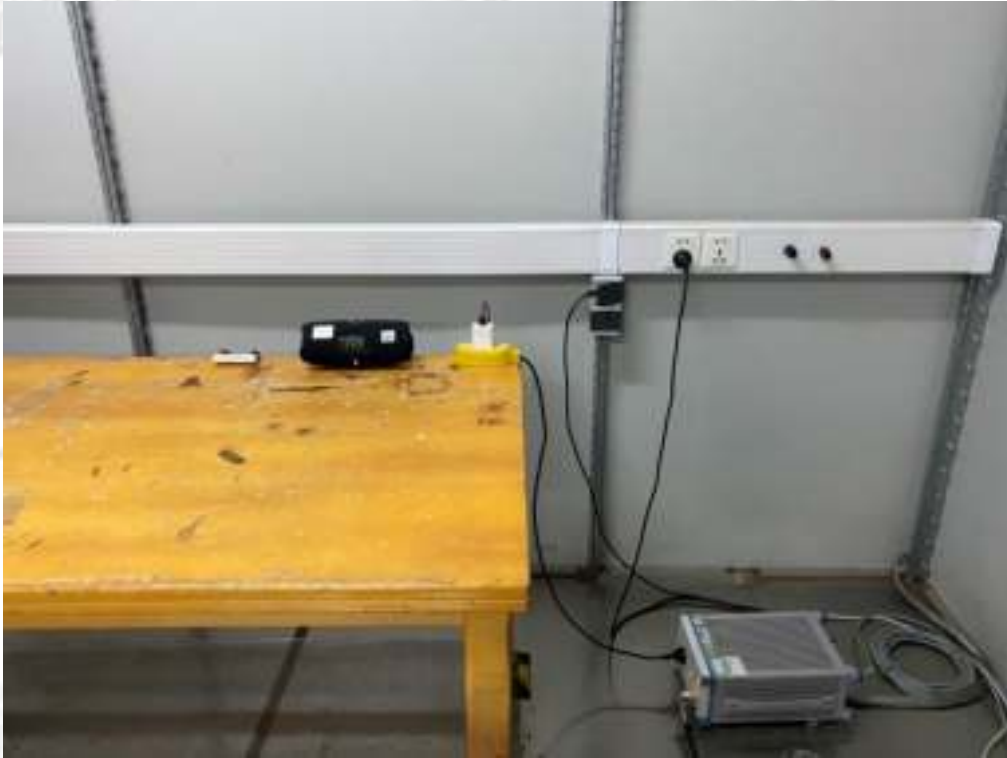


Item	Freq.	Read Level	LISN Factor	Cable Loss	Pulse Limiter Factor	Result Level	Limit Line	Over Limit	Detector	Phase
(Mark)	(MHz)	(dBµV)	(dB)	(dB)	(dB)	(dBµV)	(dBµV)	(dB)		
1	0.18	30.63	9.60	0.02	9.86	50.11	64.28	-14.17	QP	LINE
2	0.18	19.04	9.60	0.02	9.86	38.52	54.28	-15.76	Average	LINE
3	0.24	26.96	9.60	0.02	9.86	46.44	61.95	-15.51	QP	LINE
4	0.24	15.43	9.60	0.02	9.86	34.91	51.95	-17.04	Average	LINE
5	0.31	21.76	9.60	0.02	9.86	41.24	59.97	-18.73	QP	LINE
6	0.31	9.94	9.60	0.02	9.86	29.42	49.97	-20.55	Average	LINE
7	0.55	20.14	9.60	0.02	9.86	39.62	56.00	-16.38	QP	LINE
8	0.55	8.28	9.60	0.02	9.86	27.76	46.00	-18.24	Average	LINE
9	3.55	19.66	9.60	0.07	9.87	39.20	56.00	-16.80	QP	LINE
10	3.55	7.54	9.60	0.07	9.87	27.08	46.00	-18.92	Average	LINE
11	7.33	17.91	9.60	0.10	9.88	37.49	60.00	-22.51	QP	LINE
12	7.33	9.73	9.60	0.10	9.88	29.31	50.00	-20.69	Average	LINE

Note:

1. Result Level = Read Level + LISN Factor + Pulse Limiter Factor + Cable loss.
2. If QP Result complies with AV limit, AV Result is deemed to comply with AV limit.
3. Test setup: RBW: 200 Hz (9 kHz—150 kHz), 9 kHz (150 kHz—30 MHz).
4. Step size: 80Hz (0.009MHz-0.15MHz), 4 kHz (0.15MHz-30MHz), Scan time: auto.

3.9. Test photo



4. Radiated Emissions Test

4.1. General information

Test and report Engineer	: Lori Mi
Test and report Date	: Oct. 27, 2020

4.2. Test equipment

Equipment	Manufacturer	Model No.	Serial No.	Last Cal.	Cal. Interval
Radiation DQT 10m 1#chamber (below 1G)					
Test Receiver	Rohde & Schwarz	ESU40	100012	Jan. 12, 2020	1 Year
Trilog Broadband Antenna	Schwarzbeck	VULB9163	331	Mar. 12, 2019	3 Year
Test software	Audix	E3	V 6.11111b	N/A	N/A
Radiation 1#chamber (above 1G)					
EMI Test Receiver	R&S	ESU8	100316	Sep. 24, 2020	1 Year
Spectrum analyzer	Agilent	E4447A	MY50180031	Jul. 01, 2020	1 Year
Double Ridged Horn Antenna	R&S	HF907	100276	Nov. 15, 2019	1 Year
Pre-amplifier	TERA-MW	TRLA-0040G35	101303	Sep. 28, 2020	1 Year
Pre-amplifier	A.H.	PAM-0118	360	Sep. 28, 2020	1 Year
RF Cable	N/A	SMAJ-SMAJ-1M+ SMAJ-SMAJ-11M	17070133+1 7070131	Sep. 30, 2020	1 Year
Test software	Audix	E3	V 6.11111b	N/A	N/A
Notes. N/A means Not applicable.					

4.3. Reference standard

EN 55032:2015

4.5. Limits

Class A

Equipment	Frequency	Field Strengths Limits at 10m measuring distance dB(μ V)/m	Field Strengths Limits at 3m measuring distance dB(μ V)/m
Class A Equipment	30MHz to 230MHz	40	50
	230MHz to 1000MHz	47	57
	1GHz to 3GHz	/	Average:56 ; Peak:76
	3GHz to 6GHz	/	Average:60 ; Peak:80

Class B

Equipment	Frequency	Field Strengths Limits at 10m measuring distance dB(μ V)/m	Field Strengths Limits at 3m measuring distance dB(μ V)/m
Class B Equipment	30MHz to 230MHz	30	40
	230MHz to 1000MHz	37	47
	1GHz to 3GHz	/	Average:50 ; Peak:70
	3GHz to 6GHz	/	Average:54 ; Peak:74
FM receivers*	30MHz to 1000MHz	Fundamental 50	Fundamental 60
	30MHz to 300MHz	Harmonics 42	Harmonics 52
	300MHz to 1000MHz	Harmonics 46	Harmonics 56

*: these relaxed limits apply only to emission at the fundamental and harmonic frequencies of the local oscillator signals at all other frequencies shall be compliant with the limits of class B equipment given above.

Note: (1) The smaller limit shall apply at the cross point between two frequency bands.

(2) Distance is the distance in meters between the measuring instrument, antenna and the closest point of any part of the device or system.

4.6. Assistant equipment used for test

Assistant equipment	Manufacturer	Model number	Description	other
USB Output Cable	N/A	N/A	Length: 1.00m, unshielded, non-magnetic ring	N/A
R load	N/A	N/A	5V/2A	N/A
Adapter	HUAWEI	HW-050450C00	Input: 100-240V~ 50/60Hz, Output: 5V/2A or 4.5V/5A or 5V/4.5A	N/A

4.7. Test procedure

- (1) The EUT was placed on a non-metallic table, 80 cm above the ground plane inside an semi-anechoic chamber.
- (2) Test antenna was located 3m / 10m (see note) from the EUT on an adjustable mast. A pre-scan was first performed in order to find prominent radiated emissions. For final emissions measurements at each frequency of interest, the EUT were rotated and the antenna height was varied between 1m and 4m in order to maximize the emission. Measurements in both horizontal and vertical polarities were made and the data was recorded. In order to find the maximum emission, the relative positions of equipment and

all of the interface cables were changed according to EN 55032 on radiated emission test.

- (3) Spectrum frequency from 30MHz to 1GHz / 6GHz was investigated.
- (4) For final emissions measurements at each frequency of interest, the EUT were rotated and the antenna height was varied between 1m and 4m in order to maximize the emission. Measurements in both horizontal and vertical polarities were made and the data was recorded. In order to find the maximum emission, the relative positions of equipment and all of the interface cables were changed according to EN 55032 on Radiated Emission test.
- (5) For emissions from 30MHz to 1GHz, Quasi-Peak values were measured with EMI Receiver and the bandwidth of Receiver is 120 kHz.
- (6) For emissions above 1GHz, both Peak and Average level were measured with Spectrum Analyzer, and the RBW is set at 1MHz VBW is set at 3MHz.

Note: This test emissions from 30MHz to 1GHz was subcontracted to Bureau of Quality and Technology Supervision of Dongguan City.

4.8. Test result

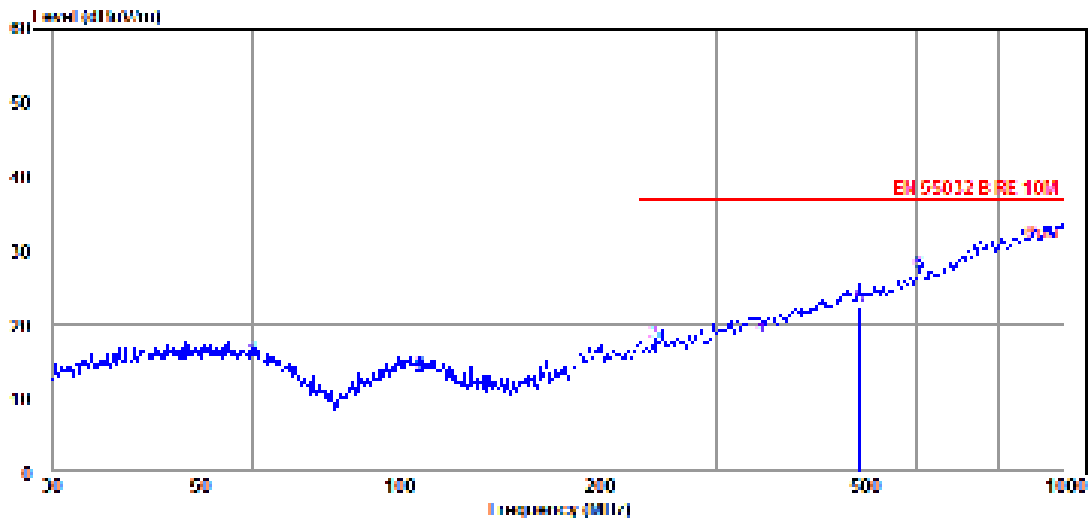
PASS. (See below detailed test result)

Note: All emissions not reported below are too low against the prescribed limits.

TR-4-E-009 Radiated Emission Test Result

Test Site : DQT 10 m Chamber 1# **D:\2020 Report test data\Q20070616-1E\20201027 10M RE.EM6**
Test Date : 2020-10-27 **Tested By** : Lori Mi
EUT : Portable Bluetooth Speaker **Model Number** : CHARGE5H
Power Supply : Battery **Test Mode** : 5V/2A load mode
Condition : Temp:24.5°C,Humi:55%,Press:101.4kPa **Antenna/Distance** : DQT FACTOR/10m/HORIZONTAL
Memo :

Data: 25



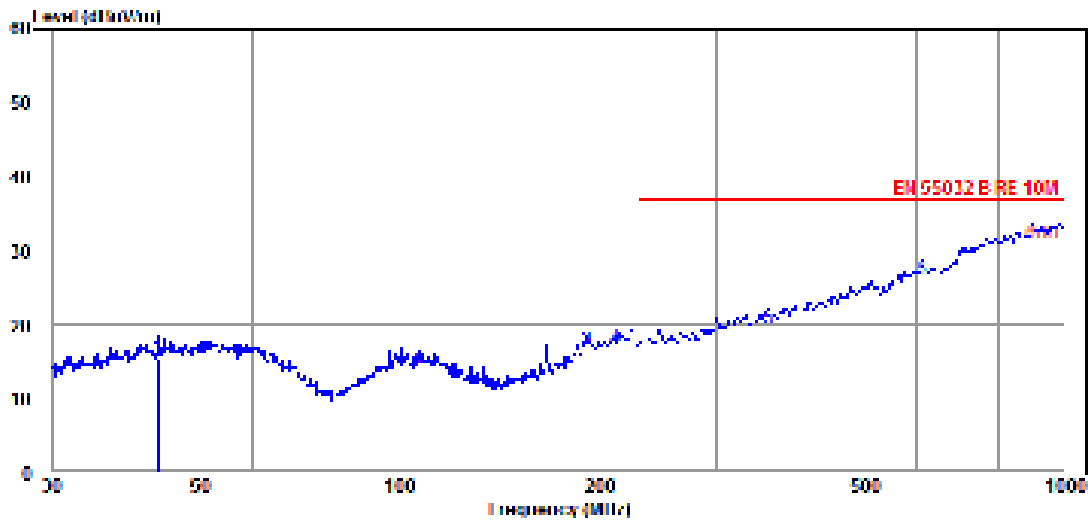
Item (Mark)	Freq. (MHz)	Read Level (dBµV)	Factor (dB/m)	Result Level (dBµV/m)	Limit Line (dBµV/m)	Over Limit (dB)	Detector	Polarization
1	60.28	0.51	14.45	14.96	30.00	-15.04	QP	HORIZONTAL
2	107.51	-0.72	13.62	12.90	30.00	-17.10	QP	HORIZONTAL
3	242.53	2.13	15.13	17.26	37.00	-19.74	QP	HORIZONTAL
4	350.48	-0.21	18.35	18.14	37.00	-18.86	QP	HORIZONTAL
5	492.47	1.13	21.17	22.30	37.00	-14.70	QP	HORIZONTAL
6	605.66	4.31	22.47	26.78	37.00	-10.22	QP	HORIZONTAL

- Note: 1. Result Level = Read Level + Factor.
 2. If Peak Result complies with QP limit, QP Result is deemed to comply with QP limit.
 3. Test setup: RBW: 120 kHz, VBW: 300 kHz, Sweep time: auto.

TR-4-E-009 Radiated Emission Test Result

Test Site : DQT 10 m Chamber 1# D:\2020 Report test data\Q20070616-1E\20201027 10M RE.EM6
Test Date : 2020-10-27 **Tested By** : Lori Mi
EUT : Portable Bluetooth Speaker **Model Number** : CHARGE5H
Power Supply : Battery **Test Mode** : 5V/2A load mode
Condition : Temp:24.5°C,Humi:55%,Press:101.4kPa **Antenna/Distance** : DQT FACTOR/10m/VERTICAL
Memo :

Data: 26



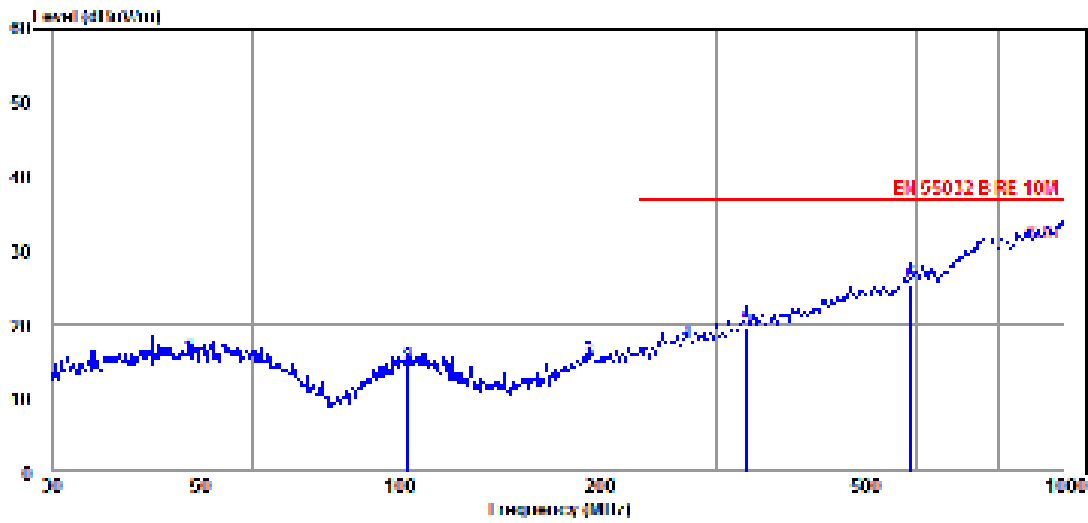
Item (Mark)	Freq. (MHz)	Read Level (dBµV)	Factor (dB/m)	Result Level (dBµV/m)	Limit Line (dBµV/m)	Over Limit (dB)	Detector	Polarization
1	43.20	0.79	14.67	15.46	30.00	-14.54	QP	VERTICAL
2	107.51	-0.05	13.62	13.57	30.00	-16.43	QP	VERTICAL
3	191.75	2.99	13.53	16.52	30.00	-13.48	QP	VERTICAL
4	211.53	2.67	13.99	16.66	30.00	-13.34	QP	VERTICAL
5	360.45	0.80	18.57	19.37	37.00	-17.63	QP	VERTICAL
6	612.06	3.62	22.40	26.02	37.00	-10.98	QP	VERTICAL

- Note: 1. Result Level = Read Level + Factor.
 2. If Peak Result complies with QP limit, QP Result is deemed to comply with QP limit.
 3. Test setup: RBW: 120 kHz, VBW: 300 kHz, Sweep time: auto.

TR-4-E-009 Radiated Emission Test Result

Test Site : DQT 10 m Chamber 1# **D:\2020 Report test data\Q20070616-1E\20201027 10M RE.EM6**
Test Date : 2020-10-27 **Tested By** : Lori Mi
EUT : Portable Bluetooth Speaker **Model Number** : CHARGE5H
Power Supply : AC 120V/60Hz **Test Mode** : Charging + 5V/2A load mode
Condition : Temp:24.5°C,Humi:55%,Press:101.4kPa **Antenna/Distance** : DQT FACTOR/10m/HORIZONTAL
Memo :

Data: 27



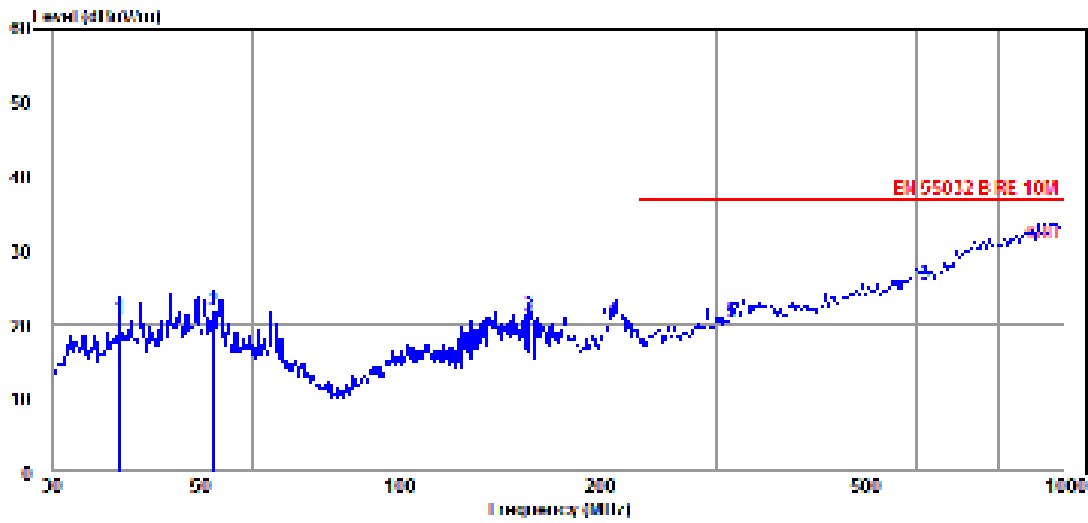
Item (Mark)	Freq. (MHz)	Read Level (dBμV)	Factor (dB/m)	Result Level (dBμV/m)	Limit Line (dBμV/m)	Over Limit (dB)	Detector	Polarization
1	48.33	0.51	14.93	15.44	30.00	-14.56	QP	HORIZONTAL
2	102.72	0.32	13.81	14.13	30.00	-15.87	QP	HORIZONTAL
3	192.42	1.44	13.53	14.97	30.00	-15.03	QP	HORIZONTAL
4	271.33	1.40	15.93	17.33	37.00	-19.67	QP	HORIZONTAL
5	333.69	1.63	17.80	19.43	37.00	-17.57	QP	HORIZONTAL
6	588.91	3.06	22.21	25.27	37.00	-11.73	QP	HORIZONTAL

- Note: 1. Result Level = Read Level + Factor.
 2. If Peak Result complies with QP limit, QP Result is deemed to comply with QP limit.
 3. Test setup: RBW: 120 kHz, VBW: 300 kHz, Sweep time: auto.

TR-4-E-009 Radiated Emission Test Result

Test Site : DQT 10 m Chamber 1# **D:\2020 Report test data\Q20070616-1E\20201027 10M RE.EM6**
Test Date : 2020-10-27 **Tested By** : Lori Mi
EUT : Portable Bluetooth Speaker **Model Number** : CHARGE5H
Power Supply : AC 120V/60Hz **Test Mode** : Charging + 5V/2A load mode
Condition : Temp:24.5°C,Humi:55%,Press:101.4kPa **Antenna/Distance** : DQT FACTOR/10m/VERTICAL
Memo :

Data: 28



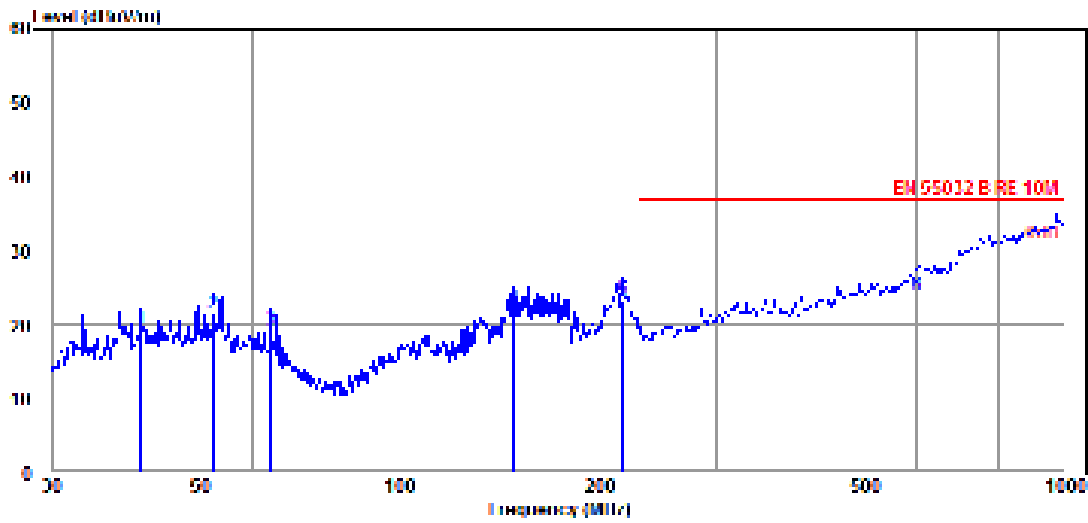
Item (Mark)	Freq. (MHz)	Read Level (dBμV)	Factor (dB/m)	Result Level (dBμV/m)	Limit Line (dBμV/m)	Over Limit (dB)	Detector	Polarization
1	37.81	6.78	14.04	20.82	30.00	-9.18	QP	VERTICAL
2	52.21	6.91	14.90	21.81	30.00	-8.19	QP	VERTICAL
3	157.01	10.71	10.63	21.34	30.00	-8.66	QP	VERTICAL
4	210.79	6.88	13.97	20.85	30.00	-9.15	QP	VERTICAL
5	317.70	3.21	17.25	20.46	37.00	-16.54	QP	VERTICAL
6	618.54	2.99	22.32	25.31	37.00	-11.69	QP	VERTICAL

- Note: 1. Result Level = Read Level + Factor.
 2. If Peak Result complies with QP limit, QP Result is deemed to comply with QP limit.
 3. Test setup: RBW: 120 kHz, VBW: 300 kHz, Sweep time: auto.

TR-4-E-009 Radiated Emission Test Result

Test Site : DQT 10 m Chamber 1# D:\2020 Report test data\Q20070616-1E\20201027 10M RE.EM6
Test Date : 2020-10-27 **Tested By** : Lori Mi
EUT : Portable Bluetooth Speaker **Model Number** : CHARGE5H
Power Supply : AC 240V/50Hz **Test Mode** : Charging + 5V/2A load mode
Condition : Temp:24.5°C,Humi:55%,Press:101.4kPa **Antenna/Distance** : DQT FACTOR/10m/VERTICAL
Memo :

Data: 29



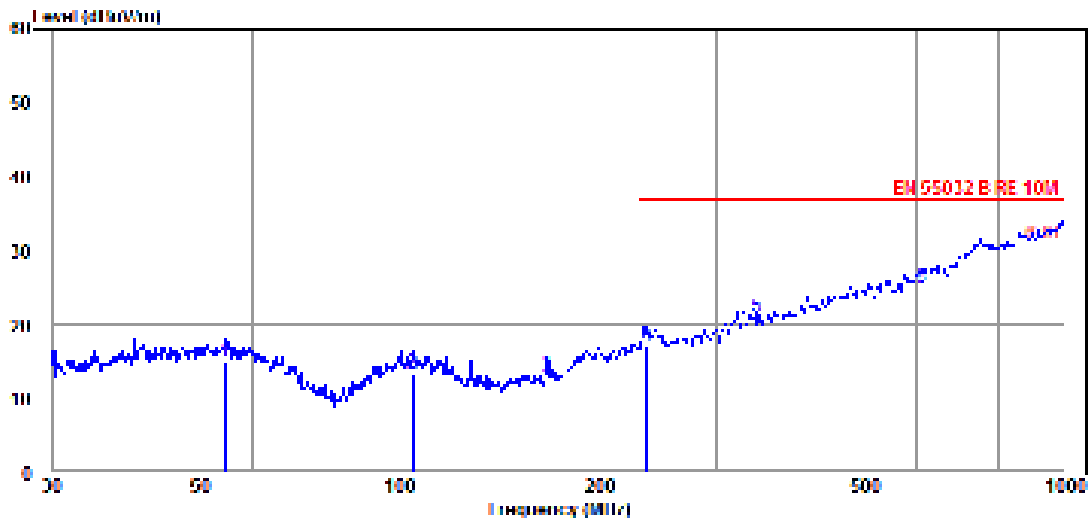
Item (Mark)	Freq. (MHz)	Read Level (dBµV)	Factor (dB/m)	Result Level (dBµV/m)	Limit Line (dBµV/m)	Over Limit (dB)	Detector	Polarization
1	40.70	4.77	14.53	19.30	30.00	-10.70	QP	VERTICAL
2	52.21	6.45	14.90	21.35	30.00	-8.65	QP	VERTICAL
3	63.98	5.88	13.26	19.14	30.00	-10.86	QP	VERTICAL
4	148.44	12.03	10.13	22.16	30.00	-7.84	QP	VERTICAL
5	216.78	9.05	14.20	23.25	30.00	-6.75	QP	VERTICAL
6	603.54	1.35	22.49	23.84	37.00	-13.16	QP	VERTICAL

- Note: 1. Result Level = Read Level + Factor.
 2. If Peak Result complies with QP limit, QP Result is deemed to comply with QP limit.
 3. Test setup: RBW: 120 kHz, VBW: 300 kHz, Sweep time: auto.

TR-4-E-009 Radiated Emission Test Result

Test Site : DQT 10 m Chamber 1# D:\2020 Report test data\Q20070616-1E\20201027 10M RE.EM6
Test Date : 2020-10-27 **Tested By** : Lori Mi
EUT : Portable Bluetooth Speaker **Model Number** : CHARGE5H
Power Supply : AC 240V/50Hz **Test Mode** : Charging + 5V/2A load mode
Condition : Temp:24.5°C,Humi:55%,Press:101.4kPa **Antenna/Distance** : DQT FACTOR/10m/HORIZONTAL
Memo :

Data: 30



Item (Mark)	Freq. (MHz)	Read Level (dBμV)	Factor (dB/m)	Result Level (dBμV/m)	Limit Line (dBμV/m)	Over Limit (dB)	Detector	Polarization
1	54.45	0.05	14.79	14.84	30.00	-15.16	QP	HORIZONTAL
2	104.54	-0.31	13.73	13.42	30.00	-16.58	QP	HORIZONTAL
3	167.24	1.89	11.19	13.08	30.00	-16.92	QP	HORIZONTAL
4	235.82	1.96	14.90	16.86	37.00	-20.14	QP	HORIZONTAL
5	345.60	2.88	18.20	21.08	37.00	-15.92	QP	HORIZONTAL
6	612.06	2.65	22.40	25.05	37.00	-11.95	QP	HORIZONTAL

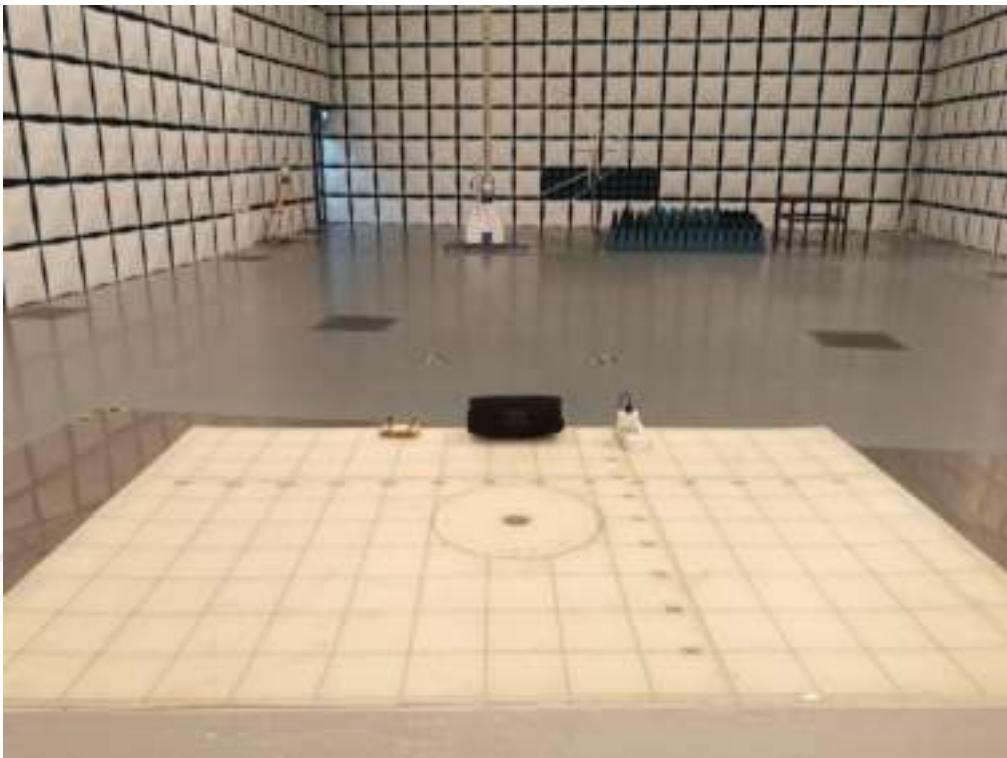
- Note: 1. Result Level = Read Level + Factor.
 2. If Peak Result complies with QP limit, QP Result is deemed to comply with QP limit.
 3. Test setup: RBW: 120 kHz, VBW: 300 kHz, Sweep time: auto.

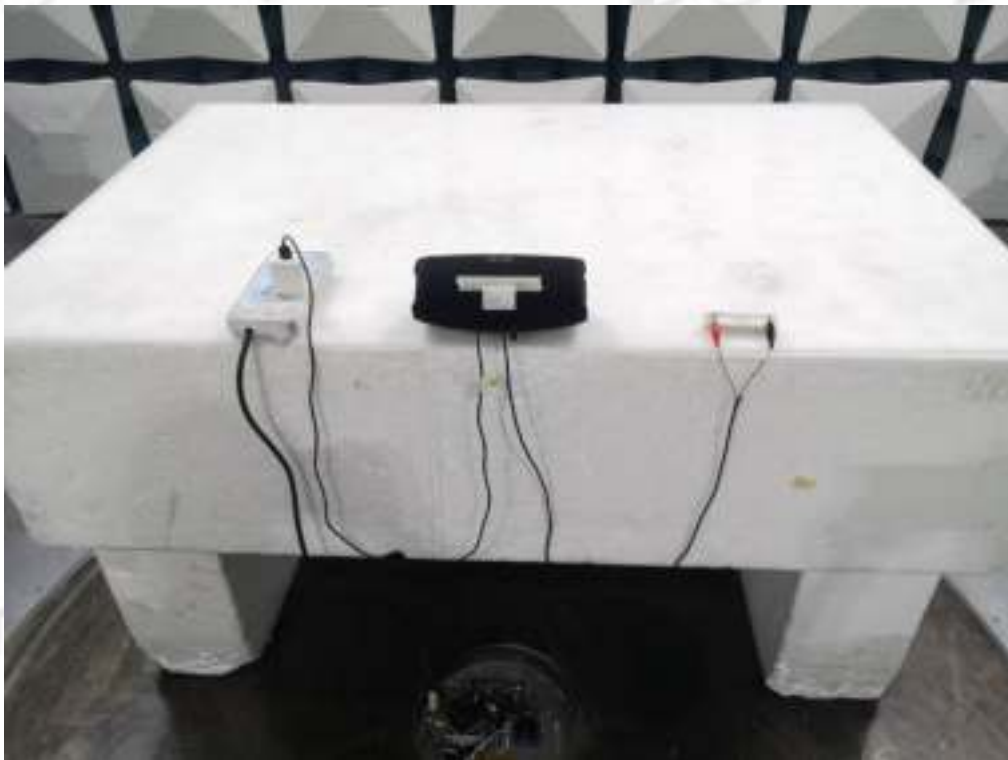
Radiated emission test (1GHz-6GHz)

Freq. (MHz)	Read level (dB μ V)	Antenna Factor (dB/m)	PRM Factor (dB)	Cable Loss (dB)	Result Level (dB μ V/m)	Limit (dB μ V/m)	Margin (dB)	Detector type	Polarization
Power Supply: AC 120V/60Hz Test mode: Charging + 5V/2A mode									
2635.00	47.69	30.13	43.32	4.58	39.08	70.00	-30.92	Peak	VERTICAL
3575.00	48.75	32.73	43.67	5.75	43.56	74.00	-30.44	Peak	VERTICAL
3975.00	49.45	33.36	43.79	6.27	45.29	74.00	-28.71	Peak	VERTICAL
4380.00	49.57	33.48	43.64	6.54	45.95	74.00	-28.05	Peak	VERTICAL
4890.00	49.25	34.29	43.45	6.84	46.93	74.00	-27.07	Peak	VERTICAL
5360.00	48.65	34.72	43.29	7.17	47.25	74.00	-26.75	Peak	VERTICAL
3240.00	49.25	31.90	43.56	5.27	42.86	74.00	-31.14	Peak	HORIZONTAL
3655.00	49.34	32.86	43.70	5.86	44.36	74.00	-29.64	Peak	HORIZONTAL
3970.00	49.18	33.35	43.79	6.26	45.00	74.00	-29.00	Peak	HORIZONTAL
4480.00	49.13	33.50	43.60	6.60	45.63	74.00	-28.37	Peak	HORIZONTAL
4950.00	48.37	34.40	43.43	6.87	46.21	74.00	-27.79	Peak	HORIZONTAL
5520.00	48.36	34.82	43.24	7.28	47.22	74.00	-26.78	Peak	HORIZONTAL
Power Supply: AC 240V/50Hz Test mode: Charging + 5V/2A mode									
3085.00	48.25	31.45	43.50	5.04	41.24	74.00	-32.76	Peak	HORIZONTAL
3585.00	48.97	32.74	43.67	5.77	43.81	74.00	-30.19	Peak	HORIZONTAL
4335.00	49.62	33.47	43.66	6.52	45.95	74.00	-28.05	Peak	HORIZONTAL
4605.00	49.32	33.72	43.56	6.68	46.16	74.00	-27.84	Peak	HORIZONTAL
5025.00	48.96	34.52	43.41	6.92	46.99	74.00	-27.01	Peak	HORIZONTAL
5335.00	48.83	34.70	43.30	7.15	47.38	74.00	-26.62	Peak	HORIZONTAL
2820.00	48.52	30.69	43.40	4.75	40.56	70.00	-29.44	Peak	VERTICAL
3375.00	49.97	32.27	43.60	5.47	44.11	74.00	-29.89	Peak	VERTICAL
3745.00	49.20	33.01	43.72	5.98	44.47	74.00	-29.53	Peak	VERTICAL
4325.00	48.82	33.47	43.67	6.51	45.13	74.00	-28.87	Peak	VERTICAL
4705.00	49.23	33.92	43.52	6.74	46.37	74.00	-27.63	Peak	VERTICAL
5005.00	49.02	34.50	43.41	6.90	47.01	74.00	-26.99	Peak	VERTICAL
Power Supply: Battery Test mode: 5V/2A mode									
2545.00	48.32	29.85	43.28	4.49	39.38	70.00	-30.62	Peak	VERTICAL
2935.00	48.14	31.02	43.44	4.85	40.57	70.00	-29.43	Peak	VERTICAL
3325.00	47.84	32.13	43.59	5.40	41.78	74.00	-32.22	Peak	VERTICAL
3945.00	48.72	33.32	43.78	6.23	44.49	74.00	-29.51	Peak	VERTICAL
4695.00	48.06	33.90	43.52	6.73	45.17	74.00	-28.83	Peak	VERTICAL
5335.00	48.35	34.70	43.30	7.15	46.90	74.00	-27.10	Peak	VERTICAL
2935.00	48.43	31.02	43.44	4.85	40.86	70.00	-29.14	Peak	HORIZONTAL
3415.00	49.24	32.38	43.62	5.53	43.53	74.00	-30.47	Peak	HORIZONTAL
4030.00	48.51	33.41	43.79	6.32	44.45	74.00	-29.55	Peak	HORIZONTAL
4655.00	48.75	33.82	43.54	6.71	45.74	74.00	-28.26	Peak	HORIZONTAL
4970.00	49.47	34.44	43.43	6.88	47.36	74.00	-26.64	Peak	HORIZONTAL
5460.00	48.39	34.78	43.26	7.24	47.15	74.00	-26.85	Peak	HORIZONTAL
Result: Pass									

Note: Result Level = Read Level + Antenna Factor + Cable loss - PRM Factor.

4.9. Test photo





5.5. Harmonic current limits

For Class A equipment

Harmonic order(n)	Maximum permissible harmonic current (A)
3	2.30
5	1.14
7	0.77
9	0.40
11	0.33
13	0.21
$15 \leq n \leq 39$	$0.15 * 15/n$
Even harmonics	
2	1.08
4	0.43
6	0.30
$8 \leq n \leq 40$	$0.23 * 8/n$

For Class B equipment

The harmonics of the input current shall not exceed the values given in class A equipment limits multiplied by a factor of 1.5.

For Class C equipment

Harmonic order(n)	Maximum permissible harmonic current expressed as a percentage of the input current at the fundamental frequency %
2	2
3	$30 * \lambda$
5	10
7	7
9	3
$11 \leq n \leq 39$ (odd harmonic only)	$0.23 * 8/n$

Note: λ is the circuit power factor.

For Class D equipment

Harmonic order(n)	Maximum permissible harmonic current per watt mA/W	Maximum permissible harmonic current (A)
3	3.4	2.30
5	1.9	1.14
7	1.0	0.77
9	0.5	0.40
11	0.35	0.33
$13 \leq n \leq 39$ (odd harmonic only)	$3.85/n$	Refer to Class A limit

5.6. Voltage fluctuations & flicker Limit

Test Item	Limit	Note
Pst	1.0	Pst means Short-term flicker indicator
Plt	0.65	Plt means long-term flicker indicator
Tdt	0.5	Tdt means maximum time that dt exceeds 3.3%
dmax(%)	4%	dmax means maximum relative voltage change.
dc(%)	3.3%	dc means relative steady-state voltage change.

5.7. Assistant equipment used for test

Assistant equipment	Manufacturer	Model number	Description	other
USB Output Cable	N/A	N/A	Length: 1.00m, unshielded, non-magnetic ring	N/A
R load	N/A	N/A	5V/2A	N/A
Adapter	HUAWEI	HW-050450C00	Input: 100-240V~50/60Hz, Output: 5V/2A or 4.5V/5A or 5V/4.5A	N/A

5.8. Test procedure

For Harmonic current test:

The EUT was placed on the top of a wooden table 0.8 meters above the ground and operated to produce the maximum harmonic components under normal operating conditions for each successive harmonic component in turn. The correspondent test program of test instrument to measure the current harmonics emanated from EUT is chosen. The measure time shall be not less than the necessary for the EUT to be exercised.

For Voltage fluctuations & flicker

The EUT was placed on the top of a wooden table 0.8 meters above the ground and operated to produce the most unfavorable sequence of voltage changes under normal conditions during the flick measurement; the measure time shall include that part of whole operation changes. The observation period for short-term flicker indicator is 10 minutes and the observation period for long-term flicker indicator is 2 hours.

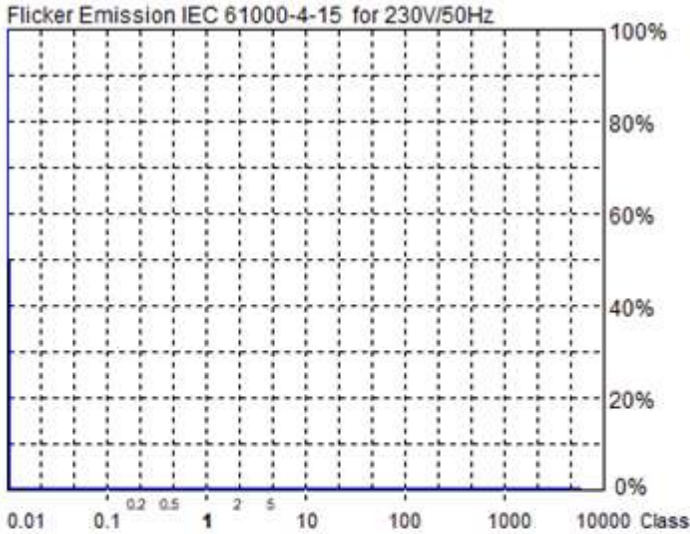
5.9. Test result

Harmonic current test result:

Not Applicable

This product is not defined as lighting equipment, and has rated power less than 75W, therefore, no limit apply according to EN IEC 61000-3-2 harmonics currents emissions test.

Voltage fluctuations & flicker test result:



Actual Flicker (Fli):	0.00
Short-term Flicker (Pst):	0.07
Limit (Pst):	1.00
Long-term Flicker (Plt):	0.07
Limit (Plt):	0.65
Maximum Relative Volt. Change (dmax):	OFL
Limit (dmax):	4.00%
Relative Steady-state Voltage Change (dc):	0.00%
Limit (dc):	3.30%
Tmax 3.30% (dt):	0.00ms
Limit (dt>Lim):	500ms

Flicker Emission - IEC 61000-3-3, EN 61000-3-3

Urms = 231.5 V P = 14.16 W
 Irms = 0.127 A pf = 0.482

Range: 1 A
 V-nom: 230 V
 TestTime: 10 min (100%)

Test completed, Result: PASSED

HAR-1000 EMC Partner

Full Bar : Actual Values
 Empty Bar : Maximum Values
 Circles : Average Values
 Blue : Current , Green : Voltage , Red : Failed

File :

Operator Elosky Liu
 Unit Portable Bluetooth Speaker
 Serial Number CHARGE5H
 Test Mode Charging + 5V/2A load mode

Urms = 231.5V Freq = 49.987 Range: 1 A
 Irms = 0.127A lpk = 0.513A cf = 4.038
 P = 14.16W S = 29.39VA pf = 0.482
 Test - Time : 1 x 10min = 10min (100 %)
 LIN (Line Impedance Network) : L: 0.24ohm +j0.15ohm N: 0.16ohm +j0.10ohm
 Limits : Plt : 0.65 Pst : 1.00
 dmax : 4.00 % dc : 3.30 %
 dtLim: 3.30 % dt>Lim: 500ms

Test completed, Result: PASSED

	dmax
	[%]
1	0.020

5.10. Test photo



6.5. Test levels and performance criterion

Test Level		Performance Criteria
Air Discharge	$\pm 2\text{kV}$, $\pm 4\text{kV}$ and $\pm 8\text{kV}$	B
Contact Discharge	$\pm 4\text{kV}$	

Performance criteria B description: During the test, degradation of performance is allowed. However, no change of operating state or stored data is allowed to persist after the test. After the test, the EUT shall continue to operate as intended without operator intervention. No degradation of performance or loss of function is allowed, after the application of the phenomena below a performance level specified by the manufacturer, when the EUT is used as intended.

6.6. Assistant equipment used for test

Assistant equipment	Manufacturer	Model number	Description	other
USB Output Cable	N/A	N/A	Length: 1.00m, unshielded, non-magnetic ring	N/A
R load	N/A	N/A	5V/2A	N/A
Adapter	HUAWEI	HW-050450C00	Input: 100-240V~ 50/60Hz, Output: 5V/2A or 4.5V/5A or 5V/4.5A	N/A

6.7. Test procedure

Air Discharge:

The test was applied on non-conductive surfaces of EUT. The round discharge tip of the discharge electrode was approached as fast as possible to touch the EUT. After each discharge, the discharge electrode was removed from the EUT. The generator was re-triggered for a new single discharge and repeated 20 times for each pre-selected test point. This procedure was repeated until all the air discharge completed.

Contact Discharge:

All the procedure was same as air discharge. Except that the generator was re-triggered for a new single discharge. The tip of the discharge electrode was touching the EUT before the discharge switch was operated.

Indirect discharge for horizontal coupling plane:

At least 20 single discharges were applied to the horizontal coupling plane, at points on each side of the EUT. The discharge electrode positions vertically at a distance of 0.1m from the EUT and with the discharge electrode touching the coupling plane.

Indirect discharge for vertical coupling plane:

At least 20 single discharges were applied to the center of one vertical edge of the coupling plane. The coupling plane, of dimensions 0.5m X 0.5m, was placed parallel to, and positioned at a distance of 0.1m from the EUT. Discharges were applied to the coupling plane, with this plane in sufficient different positions that the four faces of the EUT are completely illuminated.

6.8. Test result

Ambient Condition : <u>23.5</u> °C <u>50.8</u> %RH <u>101.4</u> kPa						
Test Site: DDT 3# Shield Room Power supply: AC 230V/50Hz, Battery						
Test Times: 20 times at each point for contact discharge; 20 times at each point for air discharge.						
Operation Mode	Type of discharge	Test Level	Test Point	Performance		Result (Pass/Fail)
				Required	Observation	
5V/2A load mode	Contact to EUT	±4kV	1,2,3	B	A	Pass
	Contact to Coupling Planes	±4kV	Coupling Planes	B	A	Pass
	Air	±2kV, ±4kV, ±8kV	1,2,4,5,6,7	B	A	Pass
Charging + 5V/2A load mode	Contact to EUT	±4kV	1,2	B	A	Pass
	Contact to Coupling Planes	±4kV	Coupling Planes	B	A	Pass
	Air	±2kV, ±4kV, ±8kV	1,2,3,4,5,6,7	B	A	Pass
Test Point:						
No.	Description	No.	Description	No.	Description	
1	LOGO	4	USB port	7	LED	
2	Metal	5	Key	8	/	
3	Type-C port	6	Gap	9	/	
Observation Description:						
A: Operation as intend, no loss of function during test and after test.						

Photo of ESD point on EUT:



6.9. Test photo



7. Continuous Radio Frequency Disturbances

7.1. General information

Test and report Engineer	: Elosky Liu
Test and report Date	: Oct. 26, 2020

7.2. Test equipment

Equipment	Manufacturer	Model No.	Serial No.	Last Cal.	Cal. Interval
Signal Generator	Agilent	N5172B	MY53050018	Sep. 24, 2020	1 Year
Amplifier	Wonder	HPA80M1000M500	101	Jul. 10, 2020	1 Year
Amplifier	Wonder	HPA1000M2500M300	102	Jul. 10, 2020	1 Year
Amplifier	Wonder	HPA2500M6000M200	103	Jul. 10, 2020	1 Year
Power meter	Agilent	E4417A	MY45100568	Sep. 24, 2020	1 Year
Power sensor	Agilent	E9323	MY44420907	Sep. 24, 2020	1 Year
Power sensor	Agilent	E9323	US40410405	Sep. 24, 2020	1 Year
Log-periodic antenna	Schwarzbeck	STLP 9149	587	N/A	N/A
Log-periodic antenna	Schwarzbeck	STLP 9128D special	090	N/A	N/A
Field strength probe	PMM	EP-601	611WX80209	Nov. 08, 2019	1 Year

7.3. Test and reference standards

EN 55035:2017, EN 61000-4-3: 2006+A2: 2010

Frequency range MHz	Acoustic or electrical interference ratio	Equivalent direct measurement		
		dB(SPL)	Digital dBm0	Analogue dBm0
80 to 1000	-0 dB	75	-30	-30

Note: At the step in the frequency range, the lower limit shall be applied.

The interference ratio (electrical or acoustic) shall meet the limits in column 2; or,

The acoustic level of the demodulated audio shall be less than the limits in column 3; or

The digitally coded level of demodulated audio shall be less than limits in column 4; or,

The analogue level of the demodulated audio shall be less than the limits in column 5.

Performance criteria A description for other devices: During and after the test the EUT shall continue to operate as intended without operator intervention. No degradation of performance or loss of function is allowed below a minimum performance level specified by the manufacturer when the EUT is used as intended.

7.6. Assistant equipment used for test

Assistant equipment	Manufacturer	Model number	Description	other
USB Output Cable	N/A	N/A	Length: 1.00m, unshielded, non-magnetic ring	N/A
R load	N/A	N/A	5V/2A	N/A
Adapter	HUAWEI	HW-050450C00	Input: 100-240V~ 50/60Hz, Output: 5V/2A or 4.5V/5A or 5V/4.5A	N/A

7.7. Test procedure

The field sensor is placed on the EUT table (0.8 meter above the ground) which is 3 meters away from the transmitting antenna. Through the signal generator, power amplifier and transmitting antenna to produce a uniformity field strength (3V/m measured by field sensor) around the EUT table from frequency range specified and records the signal generator's output level at the same time for whole measured frequency range. Then, put EUT and its simulators on the EUT turn table and keep them 3 meters away from the transmitting antenna which is mounted on an antenna tower and fixes at 1 meter height above the ground. Using the recorded signal generator's output level to measure the EUT from frequency range specified and both horizontal & vertical polarization of antenna must be set and measured. Each of the four sides of EUT must be faced this transmitting antenna and measures individually.

7.8. Test result

Ambient Condition : <u>23.1</u> °C <u>52.1</u> %RH <u>101.4</u> kPa						
Power supply: <u>AC 230V/50Hz, Battery</u>						
Field Strength : <input checked="" type="checkbox"/> 3V/m <input type="checkbox"/> 10V/m Steps: <input checked="" type="checkbox"/> 1% <input type="checkbox"/> other: Dwell time: <input checked="" type="checkbox"/> 1s <input type="checkbox"/> other:						
Swept Frequency Range: <input checked="" type="checkbox"/> 80MHz---1GHz; <input checked="" type="checkbox"/> 1800MHz, 2600MHz, 3500MHz, 5000MHz; <input type="checkbox"/> other:						
Modulation : <input type="checkbox"/> None <input checked="" type="checkbox"/> AM <input checked="" type="checkbox"/> 1kHz <input type="checkbox"/> 400Hz Modulation depth: <input checked="" type="checkbox"/> 80% <input type="checkbox"/> other:						
Operation Mode	EUT Position towards antenna	Antenna: Horizontal		Antenna: Vertical		Result (Pass/Fail)
		Required	Observation	Required	Observation	
Charging + 5V/2A load mode	Front	A	A	A	A	Pass
	Right	A	A	A	A	Pass
	Rear	A	A	A	A	Pass
	Left	A	A	A	A	Pass
5V/2A load mode	Front	A	A	A	A	Pass
	Right	A	A	A	A	Pass
	Rear	A	A	A	A	Pass
	Left	A	A	A	A	Pass
Observation Description: A: Operation as intend, no loss of function during test and after test.						

7.9. Test photo



8.5. Test levels and performance criterion

Test Level			Performance Criteria
Test voltage	±1kV For AC mains Port	±0.5kV for dc input or signal Port	B
Repetition Frequency	5kHz	5kHz	
Burst Duration	15ms	15ms	
Burst Period	300ms	300ms	
Inject Time(s)	120s	120s	
Inject Method	Direct For AC mains port	Direct For signal port Direct For dc input port	
Inject Line	AC Mains of adapter	DC input of adapter or Capacitive coupling clamp	

Note: This test shall be additionally performed on analogue/digital data ports, and DC network power ports, of radio equipment and associated ancillary equipment, if the cables may be longer than 3 m.

Performance criteria B description: During the test, degradation of performance is allowed. However, no change of operating state or stored data is allowed to persist after the test. After the test, the EUT shall continue to operate as intended without operator intervention. No degradation of performance or loss of function is allowed, after the application of the phenomena below a performance level specified by the manufacturer, when the EUT is used as intended.

8.6. Assistant equipment used for test

Assistant equipment	Manufacturer	Model number	Description	other
USB Output Cable	N/A	N/A	Length: 1.00m, unshielded, non-magnetic ring	N/A
R load	N/A	N/A	5V/2A	N/A
Adapter	HUAWEI	HW-050450C00	Input: 100-240V~ 50/60Hz, Output: 5V/2A or 4.5V/5A or 5V/4.5A	N/A

8.7. Test procedure

The EUT and its simulators were placed on the ground reference plane and were insulated from it by a wood support 0.1m ± 0.01m thick. The ground reference plane was 1m*1m metallic sheet with 0.65mm minimum thickness. This reference ground plane was project beyond the EUT by at least 0.1m on all sides and the minimum distance between EUT and all other conductive structure, except the ground plane was more than 0.5m. All cables to the EUT was placed on the wood support, cables not subject to EFT/B was routed as far as possible from the cable under test to minimize the coupling between the cables.

For DC input and AC power ports:

The EUT was connected to the power mains by using a coupling device that couples the EFT interference signal to AC power lines. Both positive transients and negative transients of test voltage were applied during compliance test and the duration of the test can't less than 2mins.

For signal ports:

The capacitive coupling clamp was connected to the power by using a coupling device that couples the EFT interference signal to capacitive coupling clamp. Both positive transients and negative transients of test voltage were applied during compliance test and the duration of the test can't less than 2mins.

8.8. Test result

Ambient Condition : <u>23.1</u> °C <u>51.3</u> %RH <u>101.4</u> kPa						
Test Site: DDT 4# Shield Room			Power supply: AC 230V/50Hz			
Port: <input checked="" type="checkbox"/> AC Mains <input type="checkbox"/> DC Supply <input type="checkbox"/> Signal:			Burst Period: <input checked="" type="checkbox"/> 300ms <input type="checkbox"/> Other:			
Coupling: <input checked="" type="checkbox"/> Direct <input type="checkbox"/> Capacitive Clamp			Test Time: <input checked="" type="checkbox"/> 120S <input type="checkbox"/> Other:			
Repetition Frequency: <input checked="" type="checkbox"/> 5kHz <input type="checkbox"/> 100kHz			Burst Duration: <input checked="" type="checkbox"/> 15ms <input type="checkbox"/> Other:			
Operation Mode	Line/port	Test Voltage	Performance			Result (Pass/Fail)
			Required	Observation(+)	Observation(-)	
Charging + 5V/2A load mode	L	1kV	B	A	A	Pass
	N	1kV	B	A	A	Pass
	L-N	1kV	B	A	A	Pass
Observation Description: A: Operation as intend, no loss of function during test and after test.						

8.9. Test photo



Analogue/digital data port, Port type: coaxial or shielded		Performance Criterion
Shield to ground	0.5 kV 1.2/50(8/20) μ s	B
Note: Applicable only to ports which, according to the manufacturer's specification, the cable lengths greater than 3m.		
DC network power port		Performance Criterion
Line to reference ground	0.5 kV 1.2/50(8/20) μ s	B
Note: Applicable only to ports which, according to the manufacturer's specification, 1. The cable lengths greater than 3m; 2. May connect directly to outdoor cables.		

Performance criteria B description: During the test, degradation of performance is allowed. However, no change of operating state or stored data is allowed to persist after the test. After the test, the EUT shall continue to operate as intended without operator intervention. No degradation of performance or loss of function is allowed, after the application of the phenomena below a performance level specified by the manufacturer, when the EUT is used as intended.

9.6. Assistant equipment used for test

Assistant equipment	Manufacturer	Model number	Description	other
USB Output Cable	N/A	N/A	Length: 1.00m, unshielded, non-magnetic ring	N/A
R load	N/A	N/A	5V/2A	N/A
Adapter	HUAWEI	HW-050450C00	Input: 100-240V~50/60Hz, Output: 5V/2A or 4.5V/5A or 5V/4.5A	N/A

9.7. Test procedure

For line-to-neutral coupling mode, provide a 0.5 kV/1 kV 1.2/50 us voltage surge (at open-circuit condition) and 8/20 us current surge to EUT selected points.

For line-to-ground coupling mode, provide a 0.5 kV/1 kV/2 kV 1.2/50 us voltage surge (at open-circuit condition) and 8/20 us current surge to EUT selected points.

The number of pulses applied shall be as follows:

- Five positive pulses line-to-neutral at 90° phase
- Five negative pulses line-to-neutral at 270° phase

The following additional pulses are required only if the EUT has an earth connection or if the EUT is earthed via any AE.

- Five positive pulses line-to-earth at 90° phase
- Five negative pulses line-to-earth at 270° phase
- Five negative pulses neutral-to-earth at 90° phase
- Five positive pulses neutral-to-earth at 270° phase

Maximum 1/min repetition rate are applied during test.

Different phase angles are done individually.

For telecommunication surge test, each line of internet port to ground coupling mode, provide a 1.0kV 10/700us voltage surge (at open-circuit condition) and 5/320us current surge to EUT selected points.

At least 5 positive and 5 negative (polarity) tests with a maximum 1/min repetition rate are applied during test.
 Record the EUT operating situation during compliance test and decide the EUT immunity criterion for above each test.

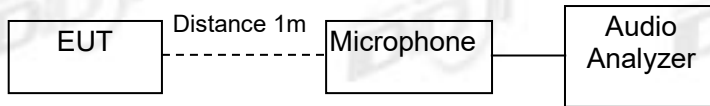
9.8. Test result

Ambient Condition : <u>23.1</u> °C <u>50.2</u> %RH <u>101.4</u> kPa											
Test Site: DDT 3# Shield Room						Power supply: AC 230V/50Hz					
Line : <input checked="" type="checkbox"/> AC Mains <input type="checkbox"/> DC Supply <input type="checkbox"/> Signal											
Wave Type: <input checked="" type="checkbox"/> 1.2/50us-8/20us <input type="checkbox"/> 10/700 us-5/320us											
Pluse times: <input checked="" type="checkbox"/> five positive pluses at 90°phase, five negative pluses at 270°phase. <input type="checkbox"/> five positive pluses and five negative pluses.											
Pulse Interval: 60S											
Operation Mode	Line/Port	0.5kV			1kV			2kV			Result (Pass/Fail)
		Performance			Performance			Performance			
		Required	+	-	Required	+	-	Required	+	-	
Charging + +5V/2A load mode	L-N	B	A	A	B	A	A	/	/	/	Pass
	L-PE	/	/	/	/	/	/	/	/	/	/
	N-PE	/	/	/	/	/	/	/	/	/	/
Observation Description: A: Operation as intend, no loss of function during test and after test.											

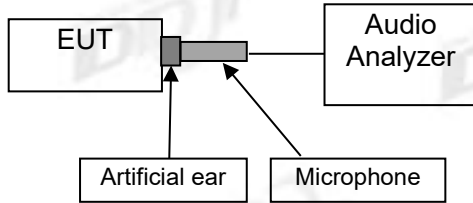
9.9. Test photo



For audio output function (acoustic measurement)



For audio output function (on-ear acoustic measurement)



10.5. Test levels and performance criterion

Test Level		Performance Criteria
Frequency and Field Strength	0.15MHz to 10MHz, 3V rms voltage level of the unmodulated signal	A
	10MHz to 30MHz, 3V to 1V rms voltage level of the unmodulated signal	
	30MHz to 80MHz, 1V rms voltage level of the unmodulated signal	
Modulation	AM modulated to a depth of 80% by a sine wave of <input checked="" type="checkbox"/> 1kHz, <input type="checkbox"/> 400Hz (note 1)	
Step Size	1% increments	
Dwell time	1 Sec.	

Note 1: The 1kHz modulation may be replaced by a different audio modulation frequency more appropriate for a given EUT if, for example, 1kHz is not within the operating audio range of the EUT.

Performance criteria A description for devices with the audio output function: The measured acoustic interference ratio and/or the measured electrical interference ratio during the test shall be -20 dB or better.

- The acoustic measurement method was selected according to clause G6.4.1 of EN 55035.
- The electrical measurement method was selected according to clause G6.4.2 of EN 55035.

Performance criteria A for devices with the telephony function.

Frequency range MHz	Acoustic or electrical interference ratio	Equivalent direct measurement		
		dB(SPL)	Digital dBm0	Analogue dBm0
0.15 to 30	-20 dB	55	-50	-50
30 to 80	-10 dB	65	-40	-40

Note: At the step in the frequency range, the lower limit shall be applied.

The interference ratio (electrical or acoustic) shall meet the limits in column 2; or, The acoustic level of the demodulated audio shall be less than the limits in column 3; or The digitally coded level of demodulated audio shall be less than limits in column 4; or, The analogue level of the demodulated audio shall be less than the limits in column 5.

Performance criteria A description for other devices: During and after the test the EUT shall continue to operate as intended without operator intervention. No degradation of performance or loss of function is allowed below a minimum performance level specified by the manufacturer when the EUT is used as intended.

10.6. Assistant equipment used for test

Assistant equipment	Manufacturer	Model number	Description	other
USB Output Cable	N/A	N/A	Length: 1.00m, unshielded, non-magnetic ring	N/A
R load	N/A	N/A	5V/2A	N/A
Adapter	HUAWEI	HW-050450C00	Input: 100-240V~ 50/60Hz, Output: 5V/2A or 4.5V/5A or 5V/4.5A	N/A

10.7. Test procedure

The EUT are placed on an insulating support 0.1m high above a ground reference plane. CDN (coupling and decoupling device) is placed on the ground plane about 0.3m from EUT. Cables between CDN and EUT are as short as possible, and their height above the ground reference plane shall be between 30 and 50 mm (where possible).

The disturbance signal described below is injected to EUT through CDN.

The EUT operates within its operational mode(s) under intended climatic conditions after power on. The frequency range is swept from 0.150MHz to 80MHz/230MHz, the interference signal level according to clause 10.5, and with the disturbance signal 80% amplitude modulated with a 1kHz / 400Hz sine wave.

The rate of sweep shall not exceed $1.5 \cdot 10^{-3}$ decades/s. Where the frequency is swept incrementally; the step size shall not exceed 1% of the start and thereafter 1% of the preceding frequency value.

Recording the EUT operating situation during compliance testing and decide the EUT immunity criterion.

10.8. Test result

Ambient Condition : <u>23.4</u> °C <u>51.5</u> %RH <u>101.4</u> kPa						
Test Site: DDT 4# Shield Room Power supply: AC 230V/50Hz						
Modulation Signal: <input checked="" type="checkbox"/> 1kHz <input type="checkbox"/> 400Hz 80% AM <input type="checkbox"/> Other:						
Steps: <input checked="" type="checkbox"/> 1% <input type="checkbox"/> other: Dwell time: <input checked="" type="checkbox"/> 1s <input type="checkbox"/> other:						
Operation mode	Frequency Range	Injected Position	Strength(e.m.f) (unmodulated)	Required	Observation	Result (Pass/Fail)
Charging + 5V/2A load mode	0.15MHz-10MHz	AC port	3V	A	A	Pass
	10MHz-30MHz		3V-1V	A	A	Pass
	30MHz-80MHz		1V	A	A	Pass
Note 1: this row only for the device with audio output function.						
Note 2: this device without the telephony function.						
Observation Description: A: Operation as intend, no loss of function during test and after test.						

10.9. Test photo



11. Power-Frequency Magnetic Fields

11.1. General information

Test and report Engineer	: Elosky Liu
Test and report Date	: Oct. 26, 2020

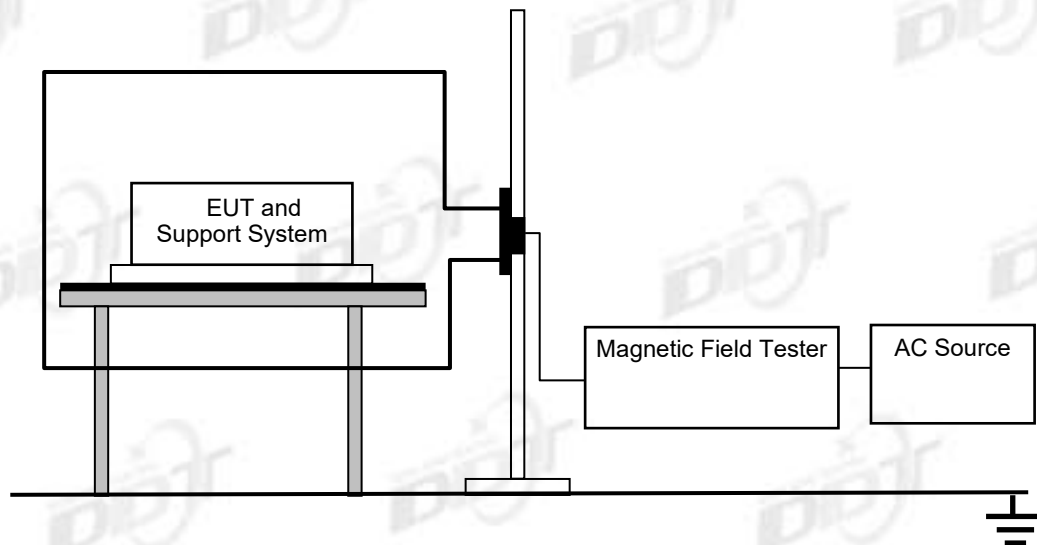
11.2. Test equipment

Equipment	Manufacturer	Model No.	Serial No.	Last Cal.	Cal. Interval
Generator	EMC PARTNER	TRA3000F	TRA3000F-1502	Jul. 01, 2020	1 Year
Magnetic Field Tester	EMC-PARTNER	MF1000-1	207	Jul. 01, 2020	1 Year

11.3. Test and reference standards

EN 55035:2017, EN 61000-4-8:2010

11.4. Block diagram of test setup



11.5. Test levels and performance criterion

Level	Magnetic Field Strength (A/m)	Performance Criterion
1	1	A

Performance criteria A description: During and after the test the EUT shall continue to operate as intended without operator intervention. No degradation of performance or loss of function is allowed below a minimum performance level specified by the manufacturer when the EUT is used as intended.

11.6. Assistant equipment used for test

Assistant equipment	Manufacturer	Model number	Description	other
USB Output Cable	N/A	N/A	Length: 1.00m, unshielded, non-magnetic ring	N/A
R load	N/A	N/A	5V/2A	N/A
Adapter	HUAWEI	HW-050450C00	Input: 100-240V~50/60Hz, Output: 5V/2A or 4.5V/5A or 5V/4.5A	N/A

11.7. Test procedure

The EUT shall be subjected to the test magnetic field by using the induction coil of standard dimensions (1m*1m) and shown in Section 11.4 Then induction coil shall then be rotated by 90° in order to expose the EUT to the test field with different orientations.

11.8. Test result

Ambient Condition : <u>22.6</u> °C <u>51.5</u> %RH <u>101.4</u> kPa						
Test Site: DDT 4# Shield Room Power supply: AC 230V/50Hz, Battery						
Operation Mode	Test Level	Testing Duration	Coil Orientation	Required	Observation	Result (Pass/Fail)
Charging + 5V/2A load mode	1A/m	5 min / coil	X	A	A	Pass
	1A/m	5 min / coil	Y	A	A	Pass
	1A/m	5 min / coil	Z	A	A	Pass
5V/2A load mode	1A/m	5 min / coil	X	A	A	Pass
	1A/m	5 min / coil	Y	A	A	Pass
	1A/m	5 min / coil	Z	A	A	Pass
Observation Description: A: Operation as intend, no loss of function during test and after test.						

11.9. Test photo



12.6. Assistant equipment used for test

Assistant equipment	Manufacturer	Model number	Description	other
USB Output Cable	N/A	N/A	Length: 1.00m, unshielded, non-magnetic ring	N/A
R load	N/A	N/A	5V/2A	N/A
Adapter	HUAWEI	HW-050450C00	Input: 100-240V~50/60Hz, Output: 5V/2A or 4.5V/5A or 5V/4.5A	N/A

12.7. Test procedure

The EUT and test generator were setup as shown. The interruptions are introduced at selected phase angles with specified duration. Record any degradation of performance.

12.8. Test result

Ambient Condition : <u>24.2</u> °C <u>51.8</u> %RH <u>101.4</u> kPa						
Test Site: DDT 4# Shield Room Power supply: AC 100V/60Hz						
Operation Mode	Voltage Dips & Interruptions %Ur	Duration (in period)	Phase Angle	Required	Observation	Result (Pass/Fail)
Charging + 5V/2A load mode	0	0.5P	0°, 180°	B	A	Pass
	70	30P	0°, 180°	C	A	Pass
	0	300P	0°, 180°	C	B	Pass
Observation Description:						
A: Operation as intend, no loss of function during test and after test.						
B: The sample stops charging during the test and automatically resumes charging after the test is completed.						

Ambient Condition : <u>24.2</u> °C <u>51.8</u> %RH <u>101.4</u> kPa						
Test Site: DDT 4# Shield Room Power supply: AC 240V/50Hz						
Operation Mode	Voltage Dips & Interruptions %Ur	Duration (in period)	Phase Angle	Required	Observation	Result (Pass/Fail)
Charging + 5V/2A load mode	0	0.5P	0°, 180°	B	A	Pass
	70	25P	0°, 180°	C	A	Pass
	0	250P	0°, 180°	C	B	Pass
Observation Description:						
A: Operation as intend, no loss of function during test and after test.						
B: The sample stops charging during the test and automatically resumes charging after the test is completed.						

12.9. Test photo



13. Photos of the EUT

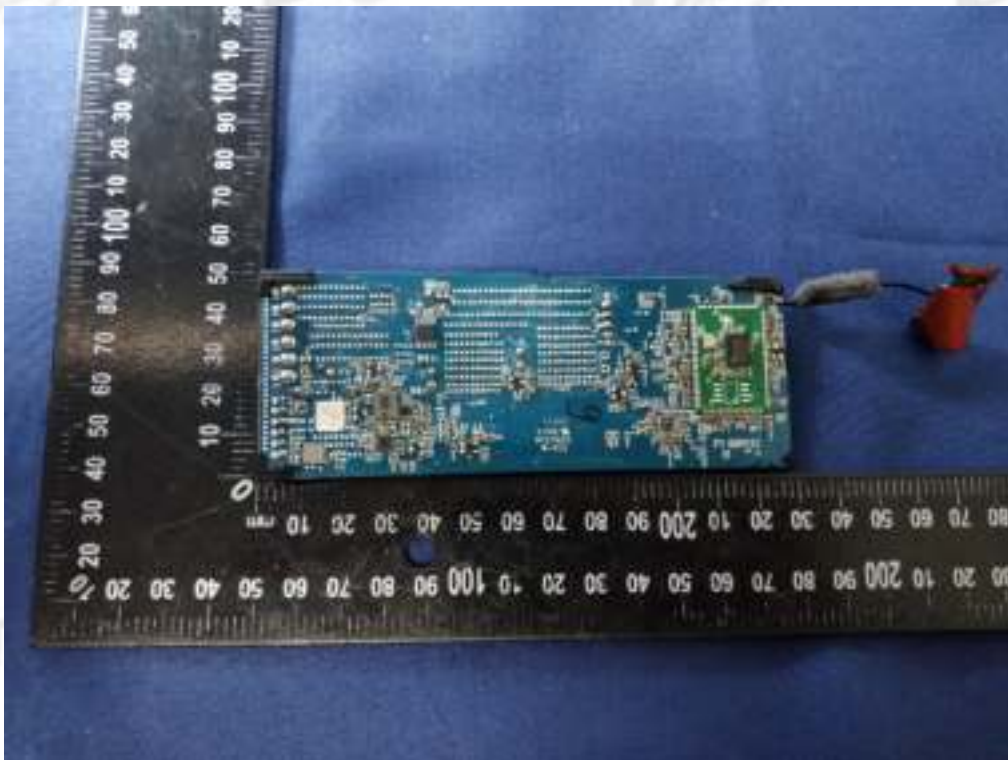


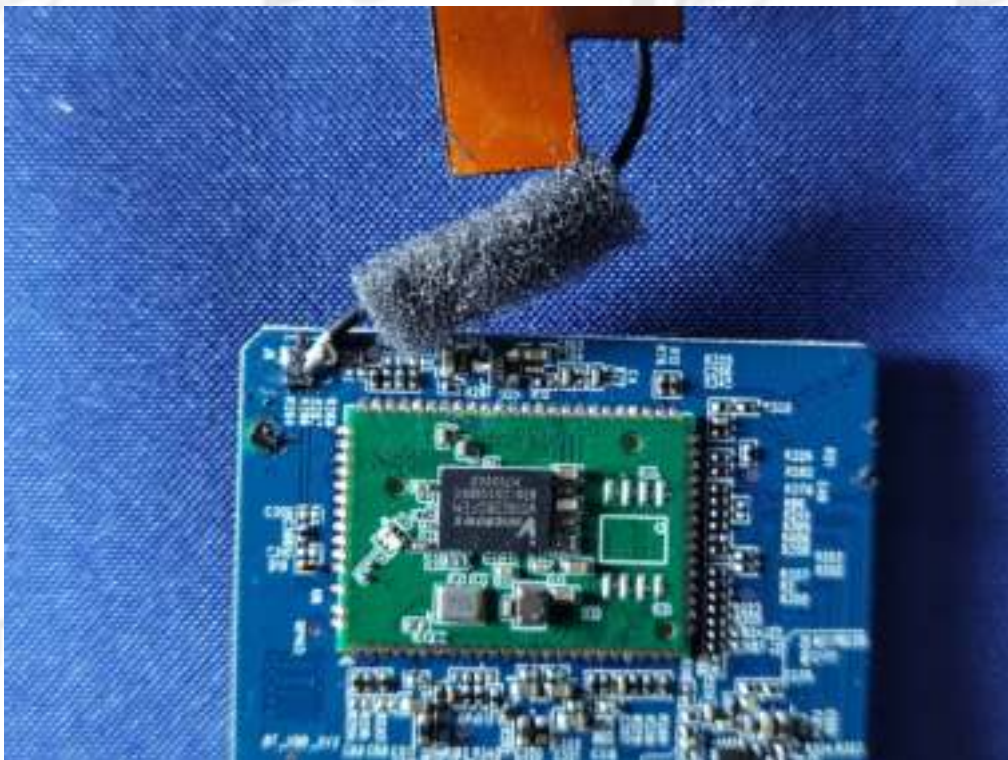


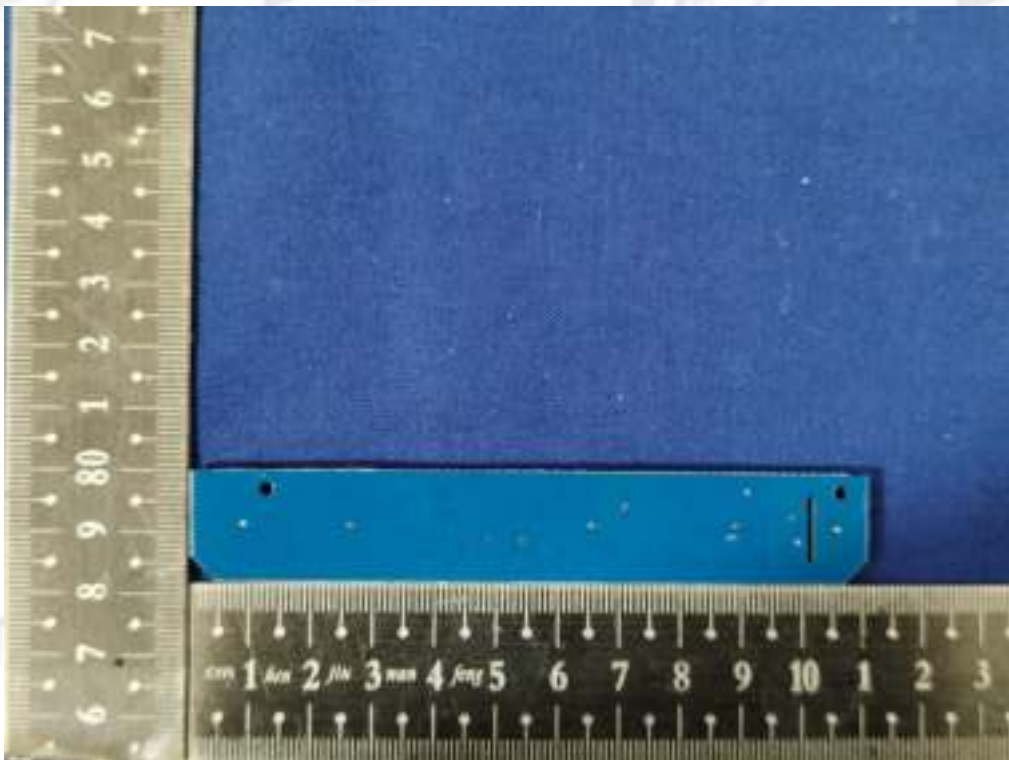
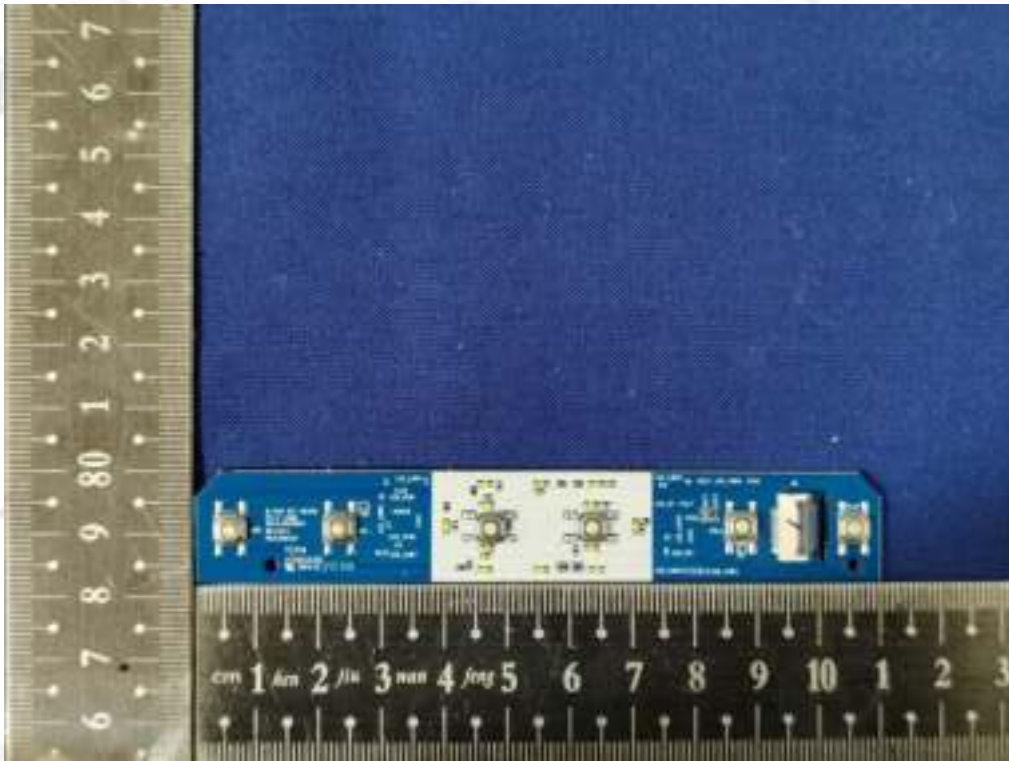


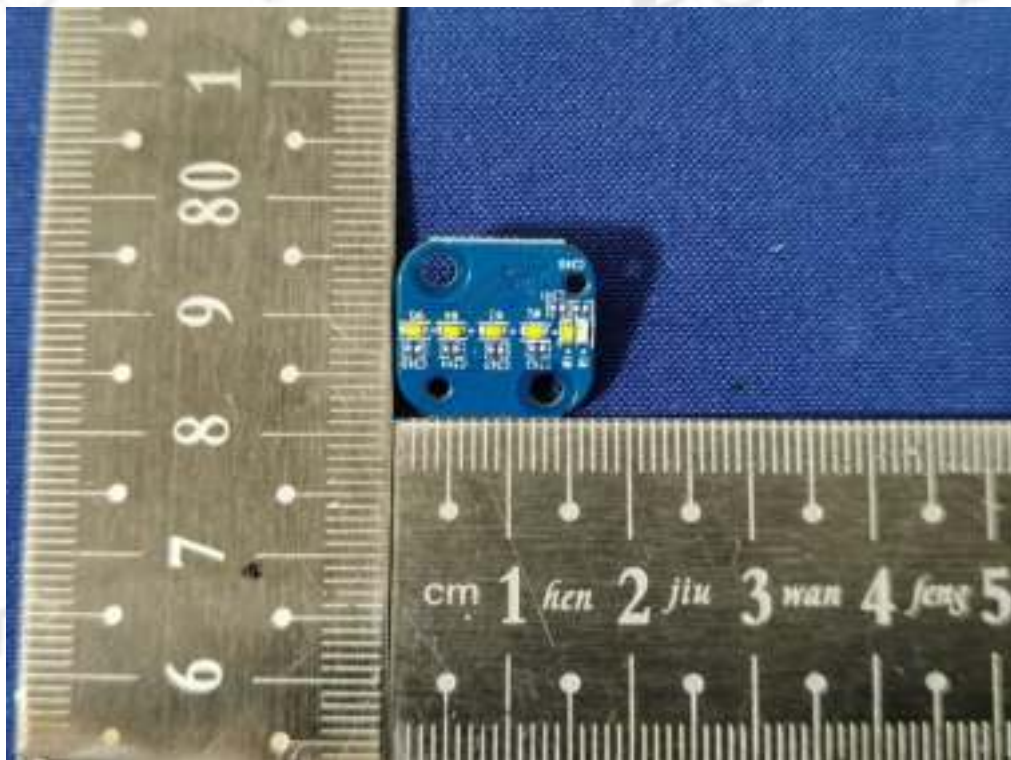
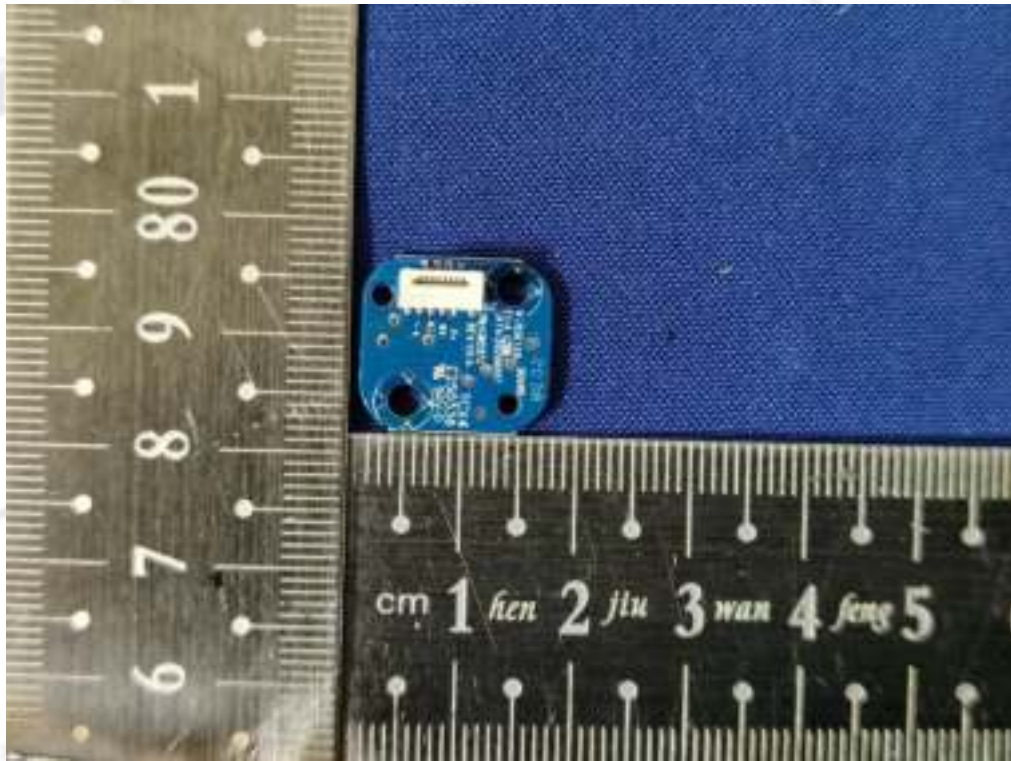


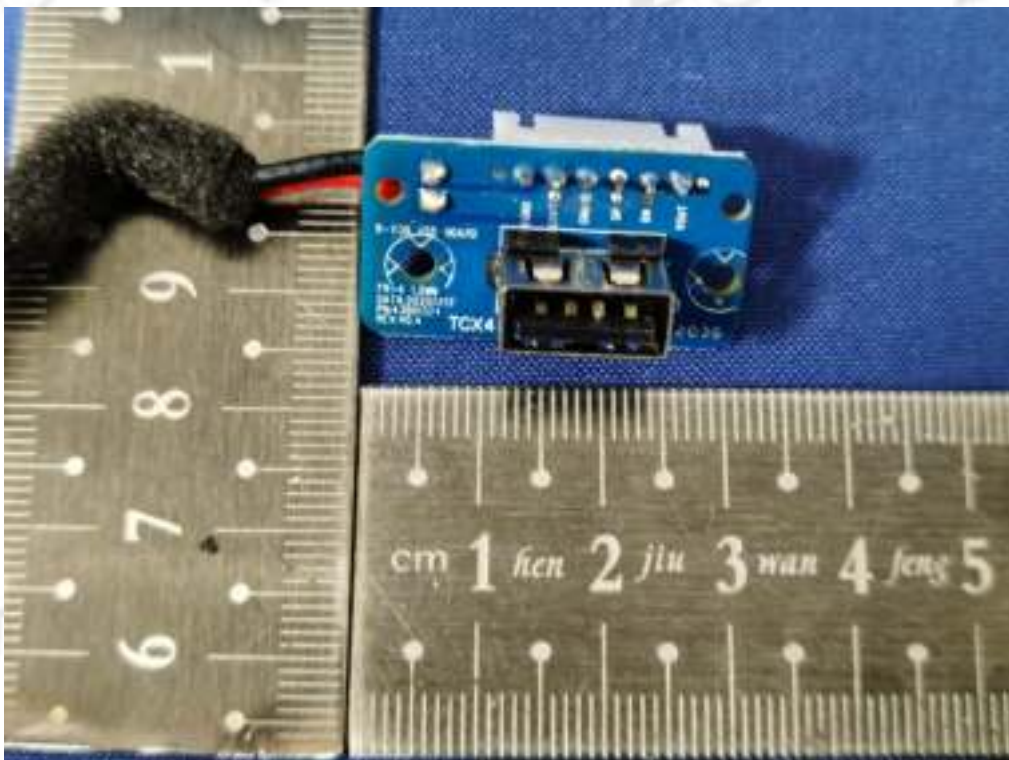
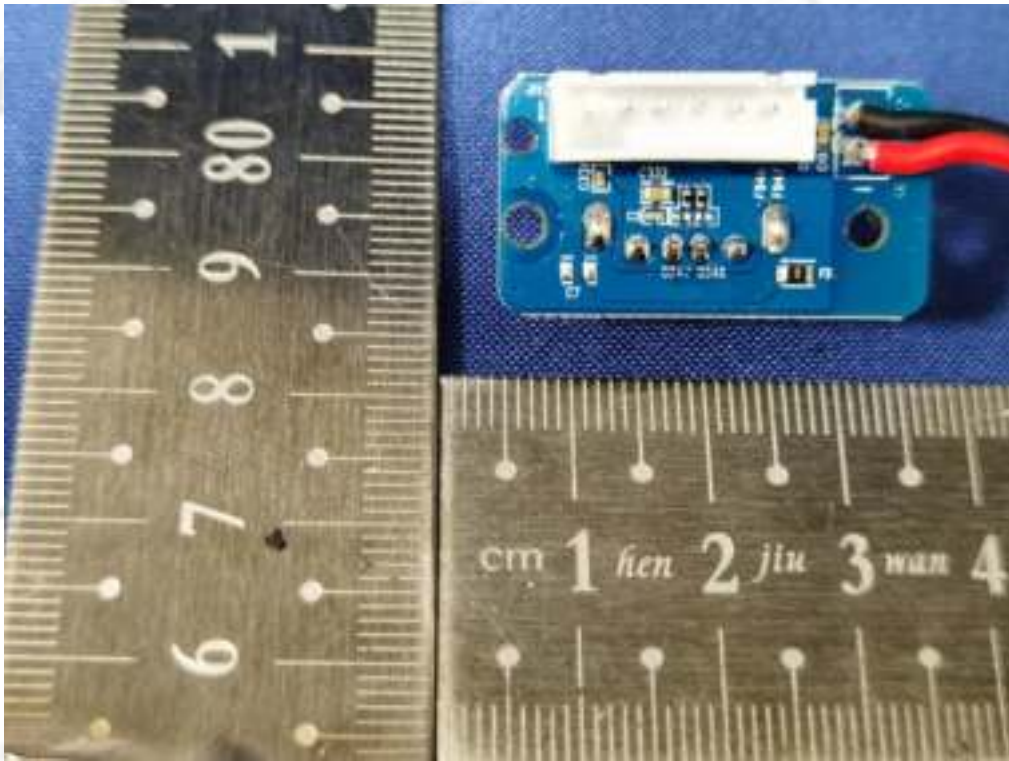


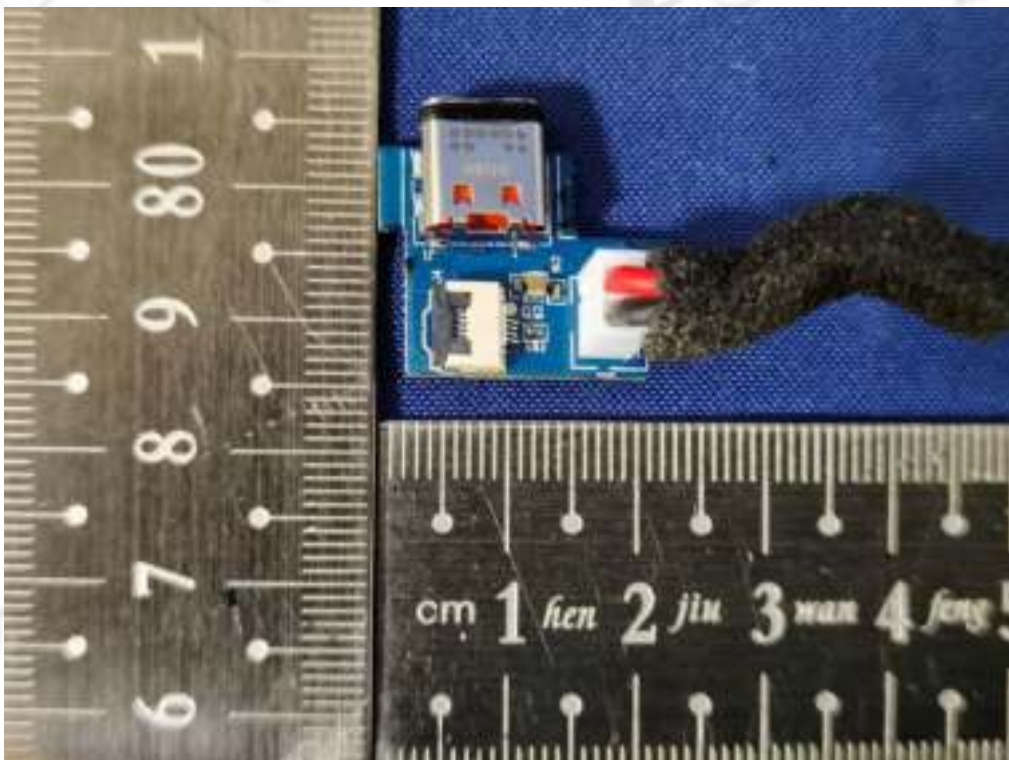
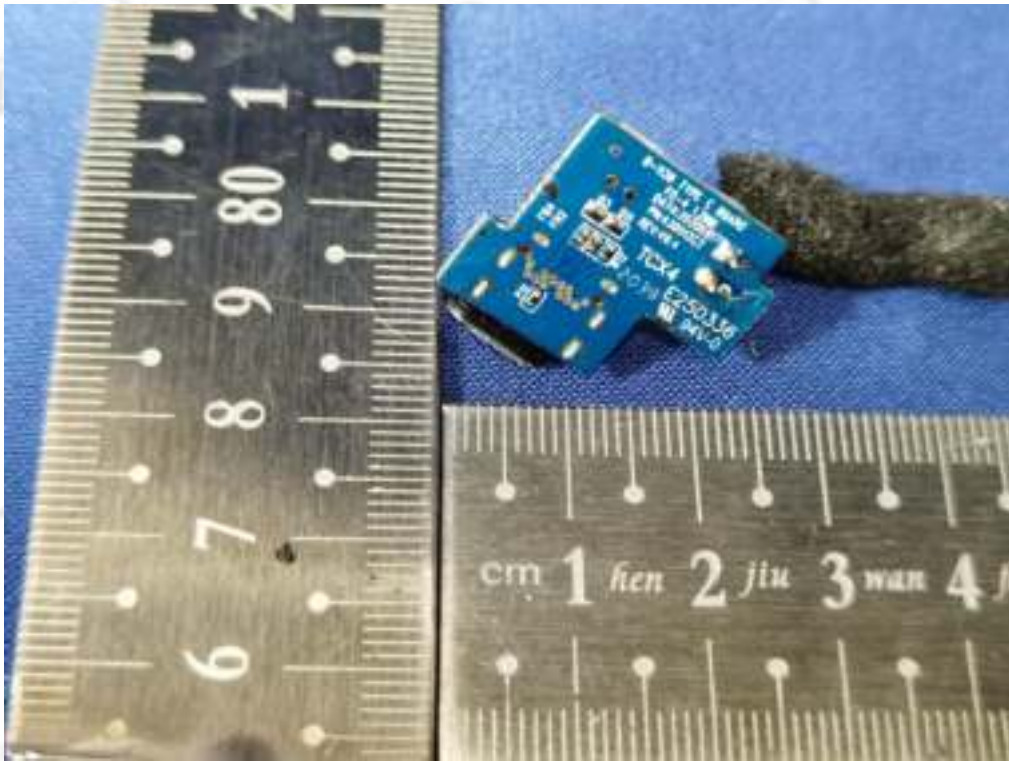


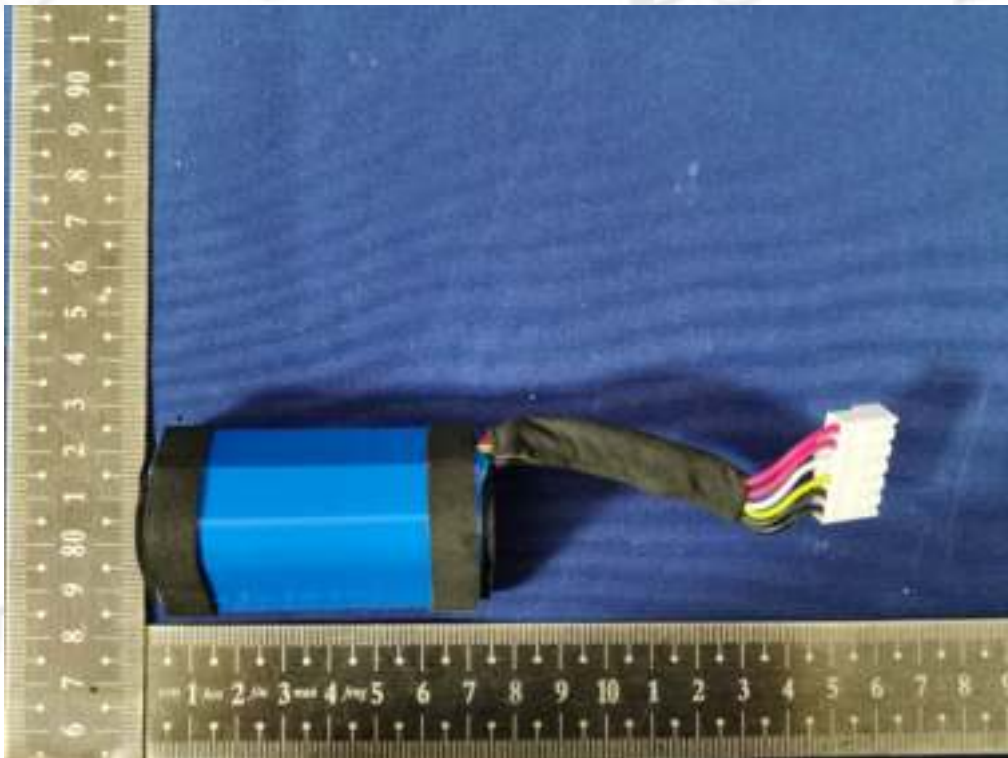


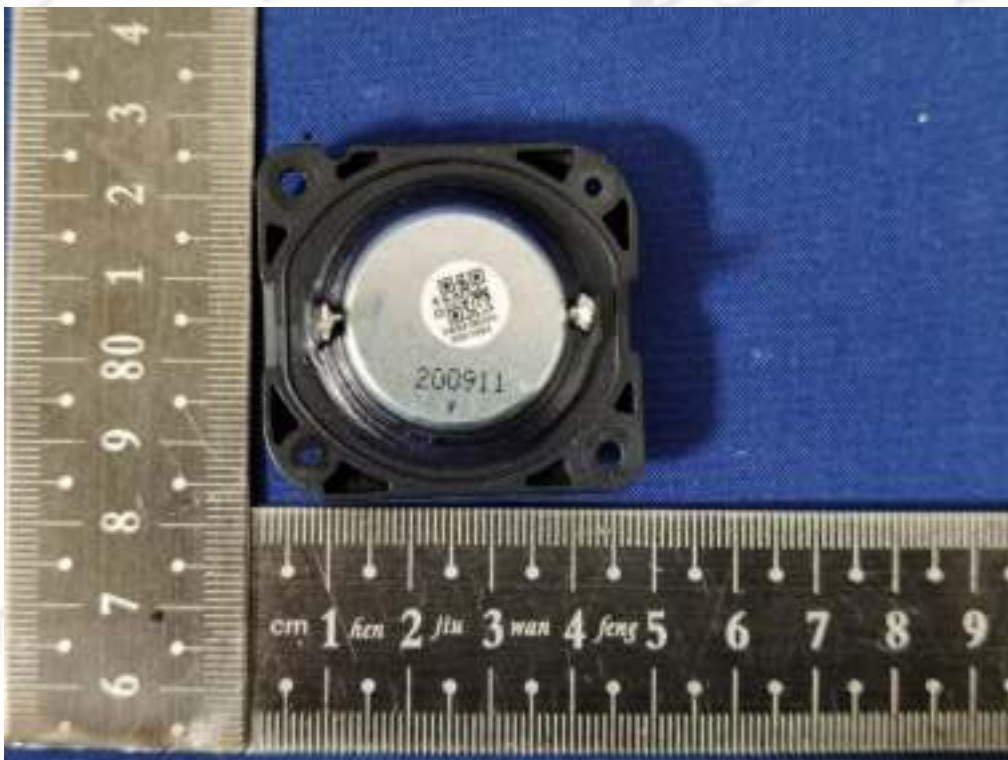
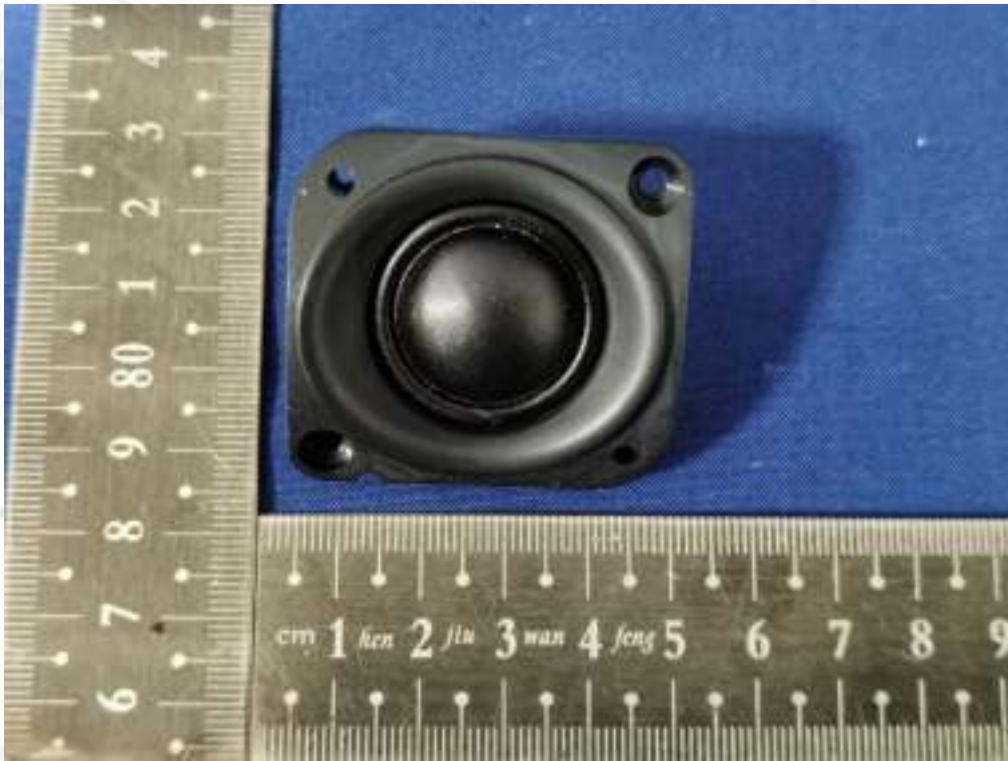


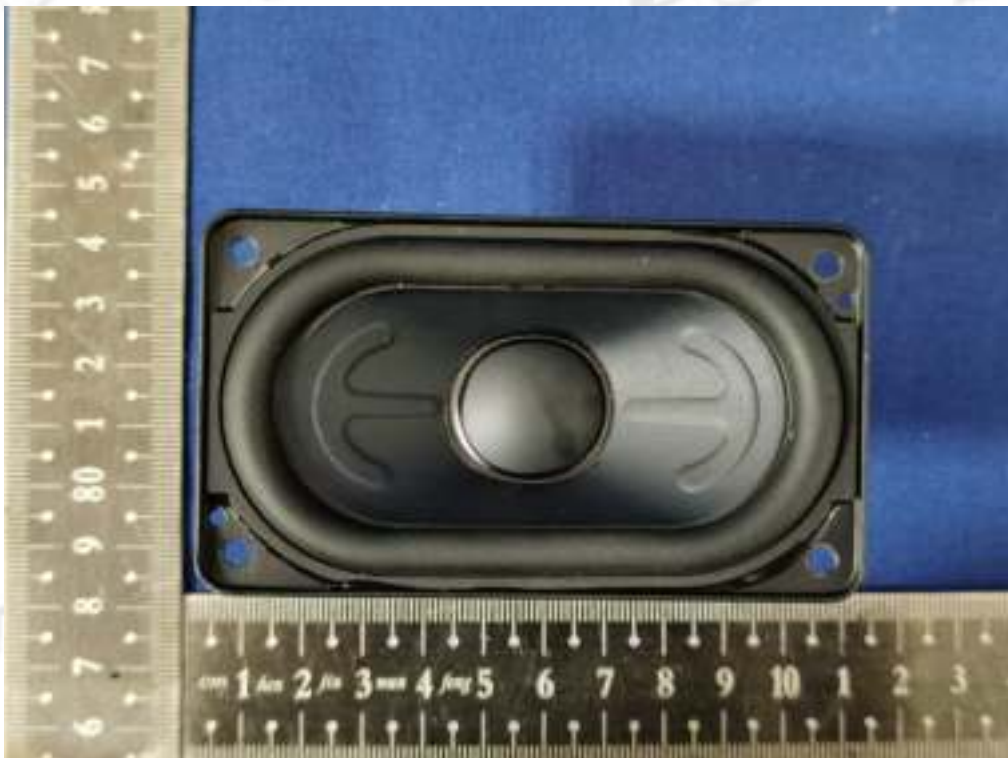
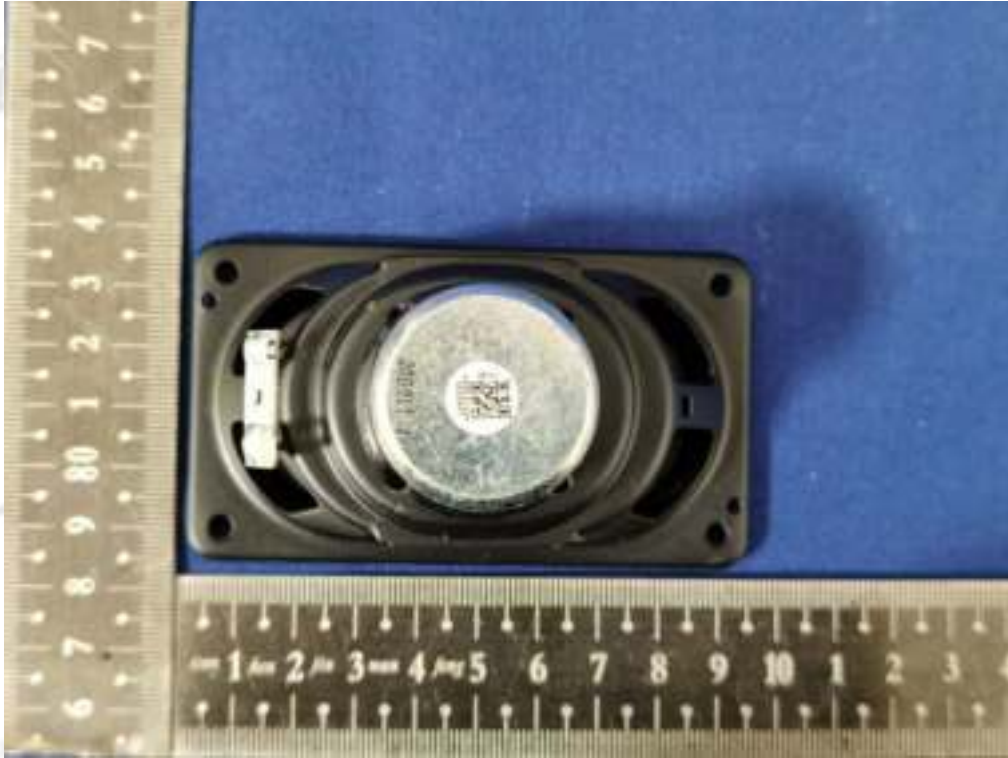












END OF REPORT