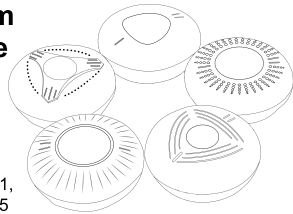


Smoke Alarm User's Guide



Model:AJ-760,AJ-761,
AJ-762,AJ-763,AJ-765

FOR YOUR CONVENIENCE, PLEASE WRITE DOWN THE FOLLOWING DETAIL.

Smoke Alarm Model Number	
Date Code	
Where to Purchased	
Date of Purchase	

IMPORTANT! PLEASE READ CAREFULLY AND SAVE



This user's manual contains important information about your Smoke Alarm's operation. If you are installing this smoke alarm for use by others, you must leave this manual or a copy of it with the end user. Photoelectric alarms are generally more effective at detecting slow, smoldering fires that smolder for hours before bursting into flame. Sources of these fires may include cigarettes burning in couches or bedding.

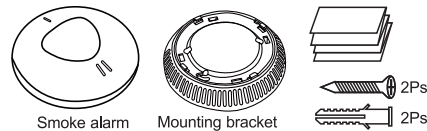
Photoelectric alarms are generally more effective at detecting fast, flaming fires that consume combustible materials rapidly and spread quickly. Sources of these fires may include flammable liquids or paper burning in a Waste container.

However, both types of alarms provide adequate detection of both types of fires.

If you desire the earliest detection of both smoldering fires and fast flaming fires, you should install smoke alarms that combine both photoelectric and ionization sensing technologies in one unit.

PACKING LIST

PART NAME	QUANTITY
Smoke alarm	1Piece
Mounting bracket	1Piece
Screw	2Pieces
Anchor plug	2Pieces
Manual	1Piece



Parameters:

Product name	independent photoelectric smoke detector
Working Voltage	DC3V battery
Standby current	<12uA
Alarm current	<35mA
Low voltage threshold	2.7V
Product lifespan	10 years
Alarm mode	LED & buzzer
Alarm sound	>85dB
Fire protection grade	V-0
Size	Φ110mm×H42mm
Detector Net weight	140g
Execute Criterion	EN14604:2005

CONTENTS

1. FUNCTION DESCRIPTION
2. IMPORTANT SAFETY INFORMATION
3. WHERE TO LOCATE
4. LOCATIONS TO AVOID
5. HOW TO INSTALL
6. TESTING THE SMOKE ALARM
7. MAINTENANCE AND CLEANING
8. PRACTICE FIRE SAFETY
9. WHAT TO DO IN CASE OF A FIRE
10. TROUBLE SHOOTING
11. LIMITATIONS OF SOME ALARMS
12. LIMITED WARRANTY

1. FUNCTION DESCRIPTION

● Test

Press and hold the TEST key, the product enters the test state. When the red light flashes, the buzzer sounds, and the action mode is the same as the alarm mode, it mean normal working ; When it will flash eight times in red, without buzzing Tweeter, it mean it abnormal working.

● Alarm

The Red LED will flash very quickly and "DI DI DI" alarm sound will be issued by the buzzer.

● Mute

When Alarming, Press the button to turn off the buzzer and the Red LED flashes every 9 seconds. The mute time is about 9minties and it will turn back to normal standby state.

● Low Voltage Alarm

When the voltage is less than 2.4V, A short "DI" sound alarms are issued and the Red LED flashes every 50S.

● Normal Work

A Red LED flashes once every 50 seconds.

2. IMPORTANT SAFETY INFORMATION

⚠ WARNING! PLEASE READ AND SAVE THESE INSTRUCTIONS.

- DO NOT remove or disconnect battery to quiet unwanted alarms. This will remove your protection. Open windows or fan the air around smoke alarm to silence it.
- The test button accurately tests all smoke alarm functions. DO NOT use any other test method. Test smoke alarm weekly to ensure proper operation.
- This smoke alarm IS NOT designed to be the PRIMARY protection for buildings that require complete fire alarm systems. Buildings of this type include hotels, motels, dormitories, hospitals, nursing homes, and group homes. This is true even if they were once single family homes. However, this smoke alarm MAY be used inside individual rooms as SUPPLEMENTAL protection.
- Install a smoke alarm in every room and on every level of the home. Smoke may not reach the smoke alarm for many reasons. For example, if a fire starts in a remote part of the home, on another level, in a chimney, wall, roof, or on the other side of a closed door, smoke may not reach the smoke alarm in time to alert household members. A smoke alarm will not promptly detect a fire EXCEPT in the area or room in which it is installed.

- Smoke alarms may not alert every household member every time. The alarm horn is loud in order to alert individuals to a potential danger. However, there may be limiting circumstances where a household member may not hear the alarm (i.e., outdoor or indoor noise, sound sleepers, drug or alcohol usage, the hard of hearing, etc.). If you suspect that this smoke alarm may not alert a household member, install and maintain specialty

- Smoke alarms. Household members must hear the alarm's warning sound and quickly respond to it to reduce the risk of damage, injury, or death that may result from fire. If a household member is hard of hearing, install special smoke alarms with lights or vibrating devices to alert occupants.

- Smoke alarms can sound their alarms only when they detect smoke. Smoke alarms detect combustion particles in the air. They do not sense heat, flame, or gas. This smoke alarm is designed to give audible warning of a developing fire. However, many fires are fast-burning, explosive, or intentional. Others are caused by carelessness or safety hazards. Smoke may not reach the smoke alarm QUICKLY ENOUGH to ensure safe escape. Smoke alarms have limitations. This smoke alarm is not foolproof and is not warranted to protect lives or property from fire. Smoke alarms are not a substitute for insurance. Homeowners and renters should insure their lives and property. In addition, it is possible for the smoke alarm to fail at any time. For this reason, you must test the smoke alarm weekly and replace every 10years.

3. WHERE TO LOCATE

- 3.1As a minimum, smoke alarms should be located between sleeping areas and potential sources of fire such as living rooms and kitchens. In single story homes with one sleeping area, a smoke alarm should be installed in the hallway, as close as possible to the living accommodation. To ensure audibility in bedrooms, no smoke alarm should be further away than 3m from any bedroom door. It may be necessary to install more than one smoke alarm, particularly the hallway is more than 15m long. In single story homes with two separate sleeping areas, a minimum of two smoke alarms is required, one outside each sleeping area. In multilevel or split level homes, as a minimum a smoke alarm should be installed on the ground floor between the staircase and any rooms in which a fire might start and on each story in circulation areas which form part of escape route (normally hallways and landings).

- 3.2Additional alarms should be installed in bedrooms in anticipation of fires originating here, caused by faulty wiring, lights, appliances, smokers or other hazards.

- 3.3For best protection, smoke alarms should be installed in every room in your home, apart from those listed in the Section 4 LOCATIONS TO AVOID. Heat alarms should be used in kitchens, boiler rooms, laundry, rooms, garages and such like, where smoke alarms would be unsuitable.

- 3.4Install smoke alarms in circulation areas at a distance no greater than 7.5m from the farthest wall, no greater than 7.5m from a door to any room in which a fire might start and no greater than 7.5m from the next smoke alarm.

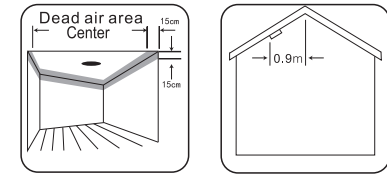
- 3.5As it is impossible to predict the source of a fire, the best location for an alarm is usually the center of a room or hallway. If it is necessary to place a smoke alarm on a

wall, always locate the detection element of the alarm 150mm to 300mm(6 to 12 inches) below the ceiling and the bottom of the alarm above the level of doors and other openings.

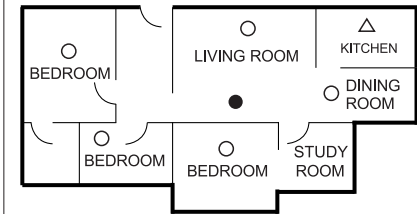
- 3.6In rooms with simple sloped, peaked or gabled ceilings, install smoke alarms on the ceiling 900mm(3feet) from the highest point of the ceiling. "Dead air" at the peak of a ceiling may prevent the smoke from reaching the alarm in time to provide an early warning.

- 3.7 Read Section 4 LOCATIONS TO AVOID and Section 13 LIMITATIONS OF SMOKE ALARMS in this manual.

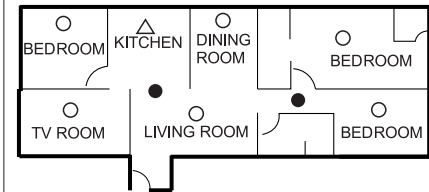
CAUTION: Research indicates that substantial increases in warning time can be obtained with each property installed, additional alarm. It is strongly recommended that advice in 3.3 above be followed to ensure maximum protection.



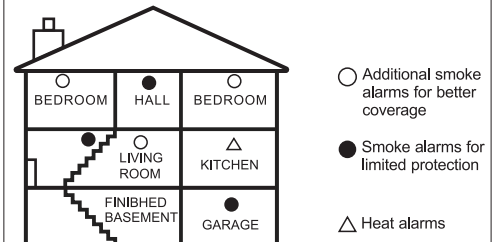
Single Story
one sleeping area



Single Story
more than one sleeping areas



Two Story dwelling



IMPORTANT:

These alarms are intended to primarily for single-occupancy private dwellings. For use in other applications the manufacturer's advice must be sought.

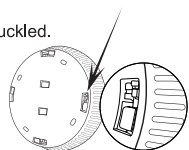
4.LOCATIONS TO AVOID

DO NOT locate smoke alarms:

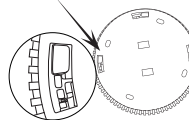
- 4.1 In turbulent air from fans, heaters, doors, windows, etc., which could draw smoke away from the alarm.
- 4.2 In high humidity area such as bathrooms and shower rooms, or where the temperature exceeds 39°C(100°F) or falls below 5°C(40°F), as high humidity can trigger nuisance alarm.
- 4.3 At the peel of an "A" frame ceiling. "Dead air" at the top may prevent smoke from reaching the alarm in time to provide early warning.
- 4.4 Less than 300mm (12 inches) from the wall when mounted on the ceiling.
- 4.5 In insect-infested areas. Tiny insects may affect performance.
- 4.6 In kitchens, boiler rooms, laundry rooms, garages. Combustion particles from cooking or car exhaust and dust and moisture could trigger a nuisance alarm.
- 4.7 In very dusty or dirty areas. Dirt and dust can build up and impair performance.4.8 Within 300mm (12 inches) of light fittings or room corners.
- 4.9 In locations which would make routine testing or maintenance hazardous (e.g.over a stairwell).
- 4.10 On Poorly insulated walls or ceilings.
- 4.11 Near objects such as ceiling decorations which might impede the path of smoke to the alarm.
- 4.12 Within 1500mm (5 feet) of fluorescent light fittings.

5.HOW TO INSTALL

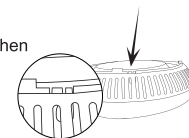
- 5.1 When accessories are not pressed, the base is not buckled. (Factory settings)



- 5.2 The state of the accessory press

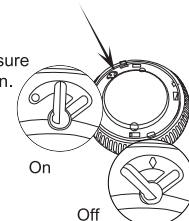


- 5.3 Press the accessory and then fasten the base



Mounting slot

- 5.4 Before use, please make sure the switch is in this position. Factory state



On

Off

- 5.5 Attach the alarm to the mounting bracket and turn clockwise to lock into place.



- 5.6 Test the smoke alarm. See Section 6 TESTING THE SMOKE ALARM.

6.TESTING THE SMOKE ALARM

WARNING!

Test each smoke alarm to be sure it is installed correctly and operating properly.

The test button accurately tests all functions. DO NOT use an open flame to test this smoke alarm. You may ignite and damage the smoke alarm or your home.

Test smoke alarms weekly and upon returning from vacation or when no one has been in the household for several days.

Stand at arm's length from the smoke alarm when testing. The alarm horn is loud to alert you to an emergency and can be harmful to hearing.

Press the but ton 2 seconds

The alarm will sound loud short beeps.

The alarm may stop sounding once releasing the test button.



NOTE: REPLACE OR RETURN THE ALARM IF THE TEST FUNCTION DOES NOT OPERATE PROPERLY AFTER FOLLOWING THE PROCEDURES OUTLINED ABOVE.

DANGER: if alarm horn sounds, and smoke alarm is not being tested, the smoke alarm is sensing smoke.

THE SOUND OF THE ALARM HORN REQUIRES YOUR IMMEDIATE ATTENTION AND ACTION.

7.MAINTENANCE AND CLEANING

This unit has been designed to be as maintenance-free as possible, but there are a few simple things you must do to keep it working properly:

- 7.1 Test it at least once a week.
- 7.2 Clean the smoke alarm at least once a month; gently vacuum the outside of the smoke alarm using your household vacuum's soft brush attachment. Test the smoke alarm. Never use water, cleaners or solvents since they may damage the unit.
- 7.3 If the smoke alarm becomes contaminated by excessive dirt, dust and/or grime, and cannot be cleaned to avoid unwanted alarms, replace the unit immediately.



- 7.4 Relocate the unit if it sounds frequent unwanted alarms. See Section 4 LOCATIONS TO AVOID for details.

- 7.5 When the battery becomes weak, the smoke alarm will sound onetime one beeps every 50s seconds and Red LED flashes onetime (the low battery warning). You should replace the alarm immediately to continue your protection.

8.PRACTICE FIRE SAFETY

If the smoke alarm sounds its alarm horn, and you have not pushed the test button, it is warning of a dangerous situation. Your immediate response is necessary. To prepare for such occurrences, develop family escape plans, discuss them with ALL household members, and practice them regularly.

- 8.1 Expose everyone to the sound of a smoke alarm and explain what the sound means.
- 8.2 Determine TWO exits from each room and an escape route to the outside from each exit.
- 8.3 Teach all household members to touch the door and use an alternate exit if the door is hot. INSTRUCT THEM NOT TO OPEN THE DOOR IF THE DOOR IS HOT.
- 8.4 Teach household members to crawl along the floor to stay below dangerous smoke, fumes, and gases.
- 8.5 Determine a safe meeting place for all members outside the building.

9.WHAT TO DO IN CASE OF A FIRE

- 9.1 Don't panic; stay calm.
- 9.2 Leave the building as quickly as possible. Touch doors to feel if they are hot before opening them. Use an alternate exit if necessary. Crawl along the floor, and DO NOT stop to collect anything.
- 9.3 Meet at a pre-arranged meeting place outside the building.
- 9.4 Call the fire department from OUTSIDE the building.
- 9.5 DO NOT GO BACK INSIDE A BURNING BUILDING. Wait for the fire department to arrive.

NOTE: These guidelines will assist you in the event of a fire. However, to reduce the chance that fires will start, practice fire safety rules and prevent hazardous situations.

10.TROUBLESHOOTING

PROBLEM	SOLUTION
Red LED flashes and the alarm sounds one beep every 50 seconds	The Alarm is end. It should replace a new one
Smoke alarm sounds unwanted alarms intermittently or when residents are cooking taking showers, etc.	1.Clean smoke alarm. See Section 7 MAINTENANCE AND CLEANING. 2.Hire an electrician to move smoke alarm to a new location. See section 3 WHERE TO LOCATION

11.LIMITATIONS OF SMOKE ALARMS

Smoke alarms have played a key role in reducing deaths resulting from home fires worldwide. However, like any warning device, Smoke Alarms can only work if they are properly located, installed, and maintained, and if smoke reaches the Alarms. They are not foolproof.

- 11.1 Smoke alarms may not waken all individuals. Practice the escape plan at least twice a year, making sure that everyone is involved – from kids to grandparents. Allow children to master fire escape planning and practice before holding a fire drill at night when they are sleeping. If children or others do not readily waken to the sound of the smoke alarm, or if there are infants or family members with mobility limitations, make sure that someone is assigned to assist them in fire drill and in the event of an emergency. It is recommended that you hold a fire drill while family members are sleeping in order to determine their response to the sound of the smoke alarm while sleeping and to determine whether they may need assistance in the event of an emergency.
- 11.2 Smoke alarms cannot detect fires if the smoke does not reach the alarms. Smoke from fires in chimneys or walls, on roofs, or on the other side of closed doors may not reach bedroom or sleeping area-especially if bedroom or sleeping area doors are closed at night- and in the hallway between them.
- 11.3 Smoke alarms may not have time to alarm before the fire itself causes damage, injury, or death, since smoke from some fires may not reach the unit immediately. Examples of this include persons smoking in bed, children playing with matches, or fires caused by violent explosions resulting from escaping gas.
- 11.4 Smoke alarms are not foolproof. Like any electronic device, smoke alarms are made of components that can wear out or fail at any time. You must test the unit weekly to ensure your continued protection. Smoke alarms cannot prevent or extinguish fires. They are not a substitute for property or life insurance.

- 11.5 Smoke alarms have a limited life. The unit should be replaced immediately if it is not operating properly. You should always replace a smoke alarm after 10 years from date of purchase. Write the purchase date on the space provided on back of unit.

12.LIMITED WARRANTY

We warrants to the original consumer purchaser each new smoke alarm to be free from defects in material and workmanship under normal use and service for a period of ten years from the date of purchase. This warranty does not cover damage resulting from accident, misuse or abuse or lack of reasonable care of the product. This warranty is in lieu of all other express warranties, obligations or liabilities.

THE IMPLIED WARRANTIES OF MERCHANTABILITY AND FITNESS FOR A PARTICULAR PURPOSE ARE LIMITED TO A PERIOD OF TEN YEARS FOR THE SMOKE ALARM FROM PURCHASE DATE.