



PartyFun
Lights.com

Item No
86454



KARAOKE PARTY SPEAKER

- UK** Think green! To save the environment and the use of unnecessary paper, you can find this manual in your own language at: www.PartyFunLights.com/Manuals
- DE** Denken Sie an die Umwelt! Um die Umwelt zu schützen und die unnötige Verwendung von Papier zu vermeiden, finden Sie diese Bedienungsanleitung in Ihrer Sprache unter: www.PartyFunLights.com/Manuals
- NL** Denk groen! Om het milieu te sparen en niet onnodig papier te gebruiken, kunt u deze handleiding in uw eigen taal terugvinden op: www.PartyFunLights.com/Manuals
- FR** Pensez « vert » ! Pour préserver l'environnement et éviter l'utilisation inutile de papier, vous pourrez retrouver ce manuel dans votre langue sur www.PartyFunLights.com/Manuals
- IT** Pensate in verde! Per proteggere l'ambiente ed evitare inutili sprechi di carta, consultate questo manuale nella vostra lingua all'indirizzo: www.PartyFunLights.com/Manuals
- ES** ¡Piense en el medio ambiente! Para protegerlo y reducir el uso innecesario de papel, puede encontrar este manual en su idioma en: www.PartyFunLights.com/Manuals
- PT** Pense verde! Para salvar o meio ambiente e evitar a utilização desnecessária de papel, pode encontrar este manual no seu próprio idioma em: www.PartyFunLights.com/Manuals
- FI** Huolehdi ympäristöstä! Sästääksemme ympäristöä ja välttääksemme turhaa paperin käyttöä olemme julkaisseet tämän ohjeen omalla kielelläsi osoitteessa: www.PartyFunLights.com/Manuals
- NO** Tenk grønt! For å spare miljøet og unngå unødvendig papirbruk kan du finne denne bruksanvisningen på ditt språk på: www.PartyFunLights.com/Manuals
- SE** Tänk grönt! För att spara miljön och mängden papper, hittar du den här handboken på ditt eget språk på: www.PartyFunLights.com/Manuals
- DK** Tænk grønt! For at skåne miljøet og brugen af unødvendigt papir kan du finde denne brugsanvisning på dit eget sprog her: www.PartyFunLights.com/Manuals
- HU** Gondolkozz környezetbarát módon! A környezetvédelem érdekében kerüld a felesleges papír használatát. A kézikönyv megtalálható a saját nyelvéen a következő weboldalon is: www.PartyFunLights.com/Manuals
- BG** Мислете екологично! С цел опазване на околната среда и рециклиране на хартия, настоящото ръководство може да се намери на вашия език на адрес: www.PartyFunLights.com/Manuals
- RO** Gândeți-vă la mediul înconjurător! Pentru a salva planeta și pentru a nu mai utiliza inutil hârtie, puteți găsi acest manual în limba dvs. la adresa: www.PartyFunLights.com/Manuals
- CZ** Myslete ekologicky! V zájmu ochrany životního prostředí a zbytečného používání papíru naleznete tuto příručku ve svém jazyce na: www.PartyFunLights.com/Manuals
- SK** Myslite ekologicky! S cieľom chrániť životné prostredie a znížiť spotrebu papiera nájdete túto príručku vo vašom jazyku na adrese: www.PartyFunLights.com/Manuals
- HR** Misлите ekološki! Za očuvanje okoliša i iskorištenje nepotrebnoг papira, potražite priručnik na vašem jeziku na: www.PartyFunLights.com/Manuals
- PL** Myśl ekologicznie! Aby zmniejszyć ilość niepotrzebnego papieru i jego wpływ na środowisko, możesz zapoznać się z niniejszą instrukcją dostępną w języku polskim pod adresem: www.PartyFunLights.com/Manuals
- LT** Būkite ekologiški! Tausokite mūsų aplinką ir be reikalo neiekvokite popieriaus. Naudojimo vadovą jūsų kalba rasite adresu www.PartyFunLights.com/Manuals
- RU** Берегите природу! Для сохранения леса и экономии бумаги, предлагаем вам это руководство на вашем языке на вебсайте: www.PartyFunLights.com/Manuals
- EE** Mõtle roheliselt! Looduse säästmiseks ja ebavajaliku paberikasutuse vältimiseks leiate juhendi omale vajalikus keeles aadressilt: www.PartyFunLights.com/Manuals
- LV** Domājiet zaiļi! Lai saudzētu vidi un netērētu papīru nelietderīgi, lasiet šo rokasgrāmatu savā valodā; tā ir pieejama vietnē www.PartyFunLights.com/Manuals
- TR** Çevreci düşünün! Doğayı kurtarmak ve gereksiz kağıt kullanımını önlemek için bu kılavuzu kendi dilinizde bulabilirsiniz: www.PartyFunLights.com/Manuals
- EL** Σκέψου Πράσινα! Για να σώσεις το περιβάλλον και να μειώσεις την περιττή χρήση χαρτιού, μπορείς να βρεις αυτό το εγχειρίδιο στη γλώσσα σου στη διεύθυνση: www.PartyFunLights.com/Manuals

Getting started

To make correct use of the functions and get to know the system's connections and usage, please read this User Manual carefully before using the product. Keep this manual in a safe place for future reference.

Introduction

This wireless speaker will allow you to listen to your music wirelessly from your mobile phone, tablet or other Bluetooth enabled device. It delivers powerful and clear sound.

Safety Instructions

Read this manual carefully before operating the equipment and keep it for future reference.

- Do not insert any metal object into the device
- Do not expose the device to liquid, moisture or excessive humidity
- To avoid a static charge, do not use the device in an extremely dry climate or environment
- Do not attempt to repair the device yourself – no user serviceable parts inside
- Avoid heavy shocks to the product and do not drop it
- The battery (rechargeable built-in battery is factory fitted) should not be exposed to excessive heat such as sunshine and fire
- This device is not suitable for children under the age of 3. Children should be instructed on how to use this device and be supervised when using it.

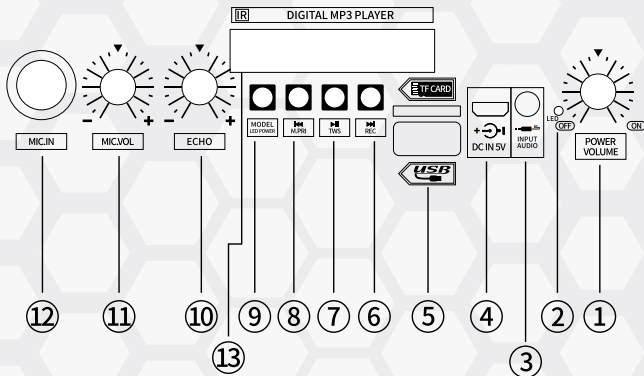
Contents

- Speaker
- Remote control
- Wired microphone
- Power cable
- User manual

Product Panel & functions

1. Power / volume
2. LED
3. Audio input
4. Power input 5V DC
5. USB / TF card
6. Next
7. Play / pause
8. Previous

9. Mode
10. Echo
11. Microphone volume
12. Microphone input
13. Digital MP3 player



Battery Charging Instructions

This wireless speaker comes with a built-in rechargeable Lithium-ion battery. Before using it for the first time we recommend you charge the battery fully.

1. Connect the supplied charging/audio USB cable to the micro USB port on the device.
2. Connect the other end of the USB cable to a USB port on a PC, Power Bank or AC/DC USB adaptor plug (not supplied). The red LED lights up indicating the battery is being charged. When the battery is fully charged, the LED will turn off.

We recommend that to avoid damage to your battery only charge it when flat

Wireless Mode

To activate wireless mode:

Turn on the speaker, you will hear a sound that indicates "Connect mode". To pair the speaker with your device, find the wireless code "PartyFunLights" in your device's list and pair it. A beeping sound will indicate that the connection is successful. You can then use your device's controls, speaker's control panel buttons or the remote control to play the music on your Bluetooth device, e.g. mobile phone.

Radio Mode

To activate FM Radio:

Turn on the speaker, press the "MODE" button until you hear "Radio Mode" and it will enter FM radio. Pressing and holding the ► / || key will enter automatic search mode and once complete the unit will automatically store all available channels; press the ◀ / V- key to select the previous radio channel or the ▶ / V+ Key for the next radio channel. Alternatively you can use the remote control to do this.

Audio Input Mode

To activate Audio input Mode:

Turn on the speaker, press the "MODE" button until you hear "Audio Input", plug the charging/audio cable into the audio in port (micro USB plug) on the speaker and the plug into your device.

You can then use your device's controls to play back the music.

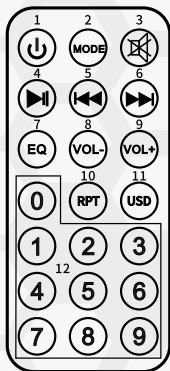
USB/TF Card Mode

To activate USB/TF card mode:

Files will be automatically played when a TF card or USB Drive is inserted. The device supports any MP3/MP4/MP5 and WMA files. You can use the product's control panel buttons to operate playback or use the number buttons on the remote control to select your favourite songs.

Remote Control Key fuctions

1. Standby
2. Mode
3. Mute
4. Play / pause / save channel (in FM mode)
5. Previous / channel search (in FM mode)
6. Next / channel search (in FM mode)
7. Change EQ settings
8. Decrease volume
9. Increase volume
10. Repeat
11. Switch USB / SD
12. Directly switch to saved channel



Safety Instructions

1. Please read these instructions and safety instructions carefully before using this product. 2. Keep these instructions for future reference. 3. Never plug the product into the mains supply while it is still in its packaging. Never cover during use. 4. Only use indoors and in dry spaces ! 5. Verify that the product has not been damaged in transport before you make use of it. 6. Keep the product out of the reach of animals, children and persons who require supervision. 7. Children do not understand the dangers of dealing with electrical equipment. 8. Always place the product on a stable, solid and flat base. 9. Do not use the product near hot surfaces or objects. 10. The adapter and the mains cable must be regularly and carefully checked for damage to the cable, the plug and other parts. In the event of damage, the product must not be used until the adapter or mains cable has been repaired. This product must only be used with the adapter or mains cable supplied with it. If the product needs to be cleaned, the adapter or mains cable must be disconnected from the mains supply. 11. Repairs must only be carried out by a fitter or other qualified person. 12. Note that the connected voltage and current corresponding to the sticker on the adapter. 13. Never submerge the product or the mains cable in water or any other liquid, in order to prevent electric shocks, fire, injury and other hazards. 14. Never carry the product on the wires and do not put the cord around sharp edges. 15. Do not allow the mains cable to dangle from tables/boxes. 16. LED Bulbs are not replaceable. 17. If there are light bulbs supplied with a product, they do not use it for other lighting fixtures. 18 This lamp is only intended for decorative purposes and not suitable for illuminating a space. 19. Distributed in the European Union by: PartyFunLights Europe BV • Van Cuijkstraat 2a • 5555EC Valkenswaard • The Netherlands 20. WARNING: This product is not a toy ! 21.The symbol above and on the product means that the product is classed as Electrical or Electronic equipment and should not be disposed with other household or commercial waste at the end of its useful life. The Waste of Electrical and Electronic Equipment (WEEE) Directive has been put in place to recycle products using best available recovery and recycling techniques to minimise the impact on the environment, treat any hazardous substances and avoid the increasing landfill. Contact local authorities for information on the correct disposal of Electrical or Electronic equipment.

Declaration of Conformity

PartyFunLights HK Ltd. • Suite 301, Promise Commercial Mansion • No. 282, Yingbin Road • Panyu District • 511430 Guangzhou • China

PartyFunLights Europe BV • Van Cuijkstraat 2a • 5555EC Valkenswaard • The Netherlands

declare under sole responsibility, that the following product:

Product name: all Party, Fun and Lighting Products > PartyFunLights.com

Barcode: starting with 871727886XXX

is in conformity with below European Directives / Regulations:

Directive 2006/95/EC on relating to electrical equipment designed for use within certain voltage limits

Directive 2004/108/EC relating to electromagnetic compatibility

Conformity to above Directives / Regulations is based on full application of following standards:

EN 60598-1:2008+A11:2009

EN 61000-3-2:2006+A1:2009+A2:2009

EN 60598-2-4:1997

EN 61000-3-3:2008

EN 55015:2006+A1:2007+A2:2009

EN 50581:2012

EN 61547:2009

Directive 2011/65/EU Restriction of the use of certain hazardous substances (RoHS)

Regulation 1194/2012 – Annex I (special purpose product) – Ecodesign requirements for directional lamps, light emitting diode lamps and related equipment

Directive 94/62/EC on packaging and packaging waste

01 January 2021



K. Koolen

General Manager

PartyFunLights HK Ltd.

PartyFunLights Europe BV

