

SAFE BATTERY USAGE

- Use alkaline batteries for best performance and longer life.
- Use only the battery type recommended for the unit.
- Batteries should be replaced only by an adult.
- Insert batteries with the correct polarity (+ and -).
- Do not mix old and new batteries.
- Do not mix alkaline, standard (carbon-zinc), or rechargeable batteries.
- Do not short-circuit batteries.
- When not used for an extended time, remove batteries to prevent possible leakage and damage to the unit.
- Do not mix rechargeable and non-rechargeable batteries.
- Rechargeable batteries are to be removed from the toy before charging.
- Rechargeable batteries are to be recharged only under adult supervision.
- Do not recharge non-rechargeable batteries.
- Exhausted batteries are to be removed from the toy.
- Do not dispose of batteries in fire as they may leak or explode.

⚠ WARNING:

⚠ This product contains a Button or Coin Cell Battery. A swallowed Button or Coin Cell Battery can cause internal chemical burns in as little as two hours and lead to death. Dispose of used batteries immediately. Keep new and used batteries away from children. If you think batteries might have been swallowed or placed inside any part of the body, seek immediate medical attention.

IMPORTANT NOTES ABOUT BUTTON BATTERIES

- WARNING - KEEP BATTERIES OUT OF REACH OF CHILDREN

- Swallowing may lead to serious injury in as little as 2 hours or death, due to chemical burns and potential perforation of the esophagus.
- If you suspect your child has swallowed or inserted a button battery immediately call the 24-hour Poisons Information Centre on 13 1126 (Australia)/ your local emergency services for fast, expert advice.
- Examine devices and make sure the battery compartment is correctly secured, e.g. that the screw or other mechanical fastener is tightened. Do not use if compartment is not secure.
- Dispose of used button batteries immediately and safely. Flat batteries can still be dangerous.
- Adults shall tell potential users about the risk of button batteries and keep their children away from button cell. Adult supervision is required.



'Let's care for the environment!'
The wheelie bin symbol indicates that the product must not be disposed of with other household waste. Please use designated collection points or recycling facilities when disposing of the item.
Do not treat old batteries as household waste. Take them to a designated recycling facility.

Please keep this manual as it contains important information.



0521-0-E/INT
Printed in China

www.LOLsurprise.com
©2021 MGA Entertainment, Inc.
L.O.L. SURPRISE! O.M.G. OUTRAGEOUS MILLENNIAL GIRLS™ is a trademark of MGA in the U.S. and other countries. All logos, names, characters, likenesses, images, slogans, and packaging appearance are the property of MGA.

MGA Entertainment, Inc.
9220 Winnetka Ave. Chatsworth, CA 91311 U.S.A.
(800) 222-4685

MGA Entertainment UK Ltd.
50 Presley Way, Crownhill, Milton Keynes,
MK8 0ES, Bucks, UK
+ 0800 521 558

The preferred method of contact for
Customer Service is through our e-mail
contact form at www.mgae.com

MGA Entertainment (Netherlands) B.V.
Baronie 68-70, 2404XG Alphen a/d Rijn, The Netherlands
Tel: +31 (0) 172 758038

Imported by MGA Entertainment Australia Pty Ltd
Suite 2.02, 32 Delhi Road
Macquarie Park NSW 2113
1300 059 676



4-IN-1 PLANE

AGES 3+

⚠ **WARNING:**
CHOKING HAZARD-Small parts.
Not for children under 3 years.

SKU: 576051

ADULT SUPERVISION REQUIRED
ADULT BATTERY INSTALLATION REQUIRED



WATCH THE DEMO VIDEO:
LOLSURPRISE.COM



Illustrations are for reference only. Styles may vary from actual contents.
Please remove all packaging including tags, ties & tacking stitches before giving this product to a child.

IMPORTANT INFORMATION

- ADULT SUPERVISION REQUIRED.
- Dolls are shown in this manual for demonstration only. Dolls are not included.
- Do not sit, stand, or jump on the unit, as doing so may result in bodily injury and/or damage to the unit.
- Do not play with plane in the street, where there is vehicular traffic or in heavily traveled areas with pedestrians.
- Do not run or throw the plane into furnitures, walls, pets, people etc., as doing so may cause injury to the person and irreparable damage to the unit.
- Do not drive plane through water, mud etc.
- Only apply stickers to the included accessories, as adhesive may not be completely removed from all surfaces.

CONTENTS

①	②	③	④	⑤
⑥	⑦	⑧	⑨	⑩
⑪	⑫	⑬	⑭	⑮
⑯	⑰	⑱	⑲	⑳
㉑	㉒	㉓	㉔	㉕ x2

BEFORE BEGINNING

Remove the pull tabs from the battery compartments located inside of the plane and on the tail wing.



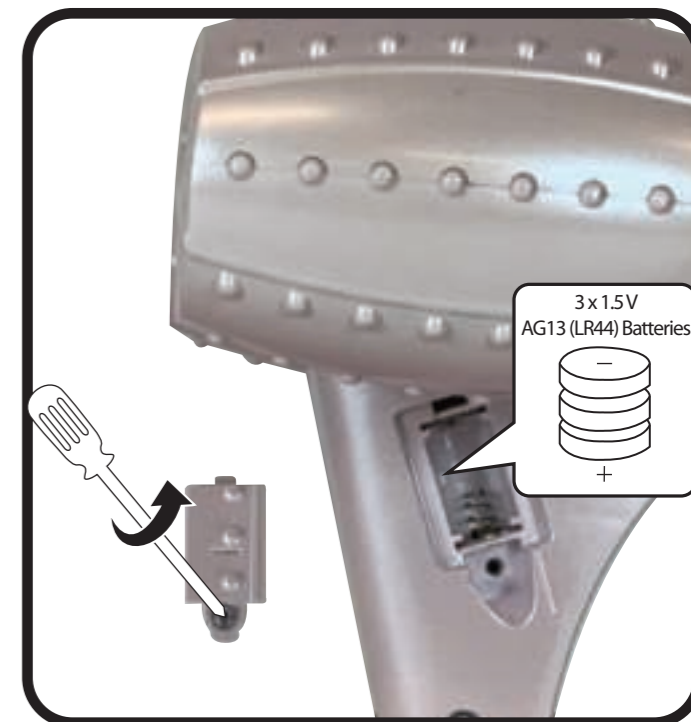
BATTERY REPLACEMENT

An adult must install fresh alkaline batteries in the unit should the batteries need replacing. Here's how:

1. Using a Phillips screwdriver (not included) remove the screws and battery compartment covers from inside the unit and on the tail wing.
2. Install three (3) 1.5V AG13 (LR44) alkaline batteries (not included) into each compartment, making sure the (+) and (-) ends face the proper direction as indicated inside the battery compartments.
3. Replace the compartment covers and tighten the screws.



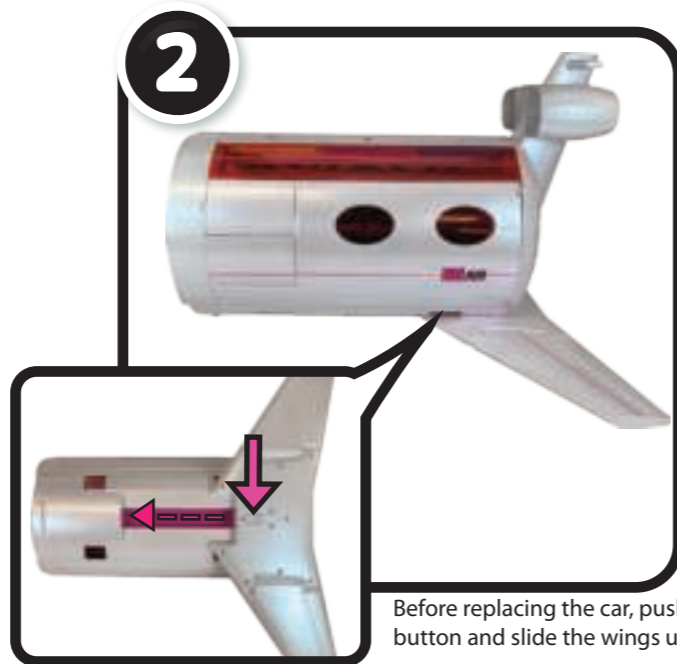
Remove car for better clearance.



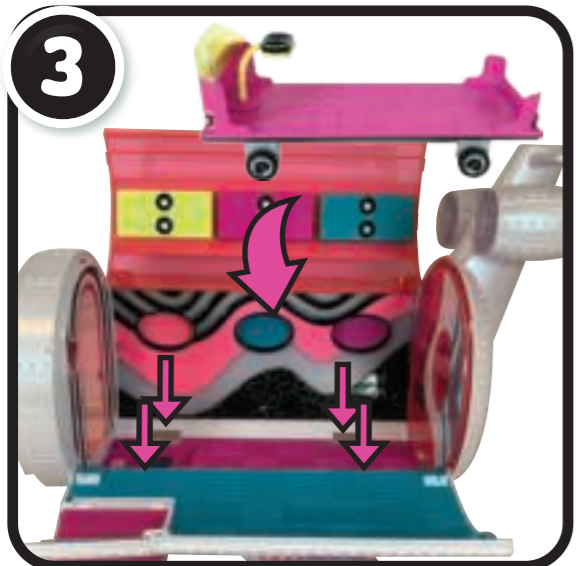
REASSEMBLE THE PLANE



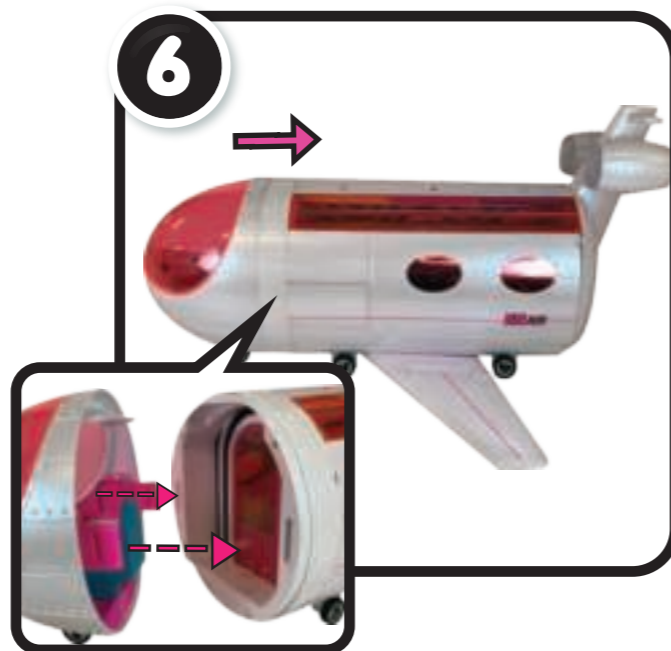
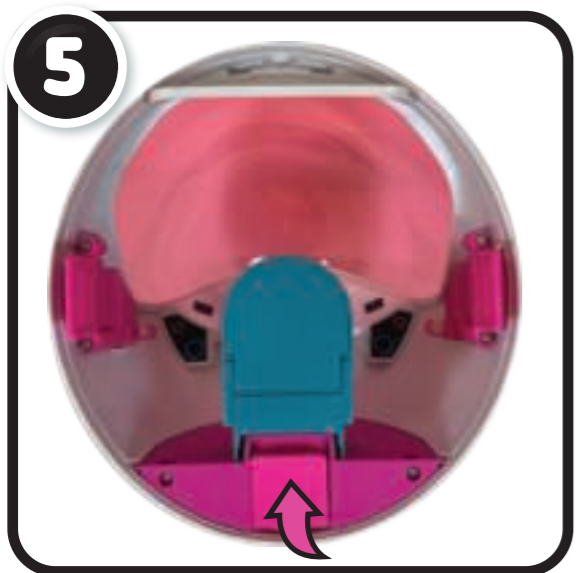
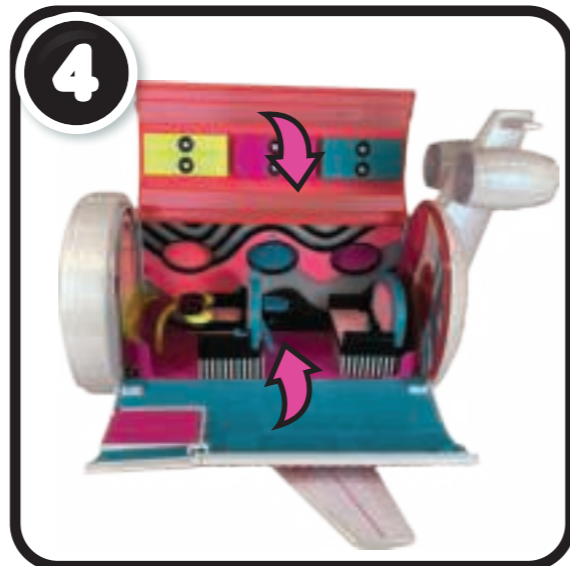
Lay down to return to plane mode.



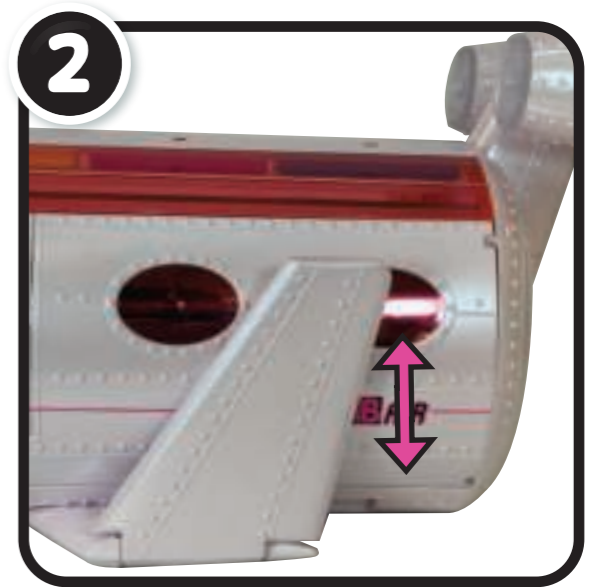
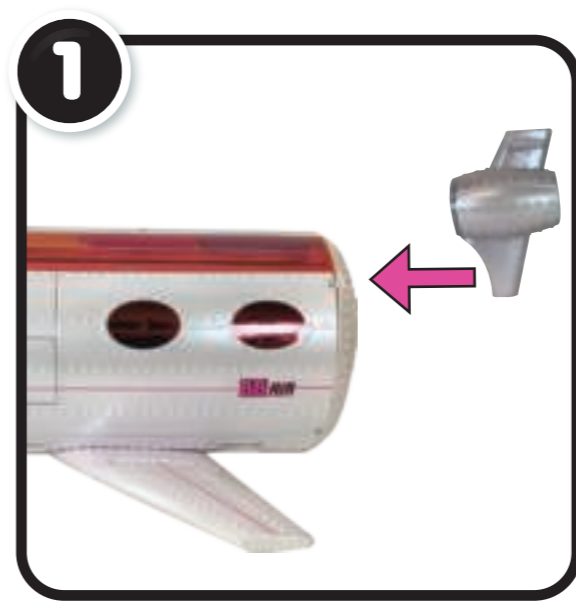
Before replacing the car, push the button and slide the wings up.



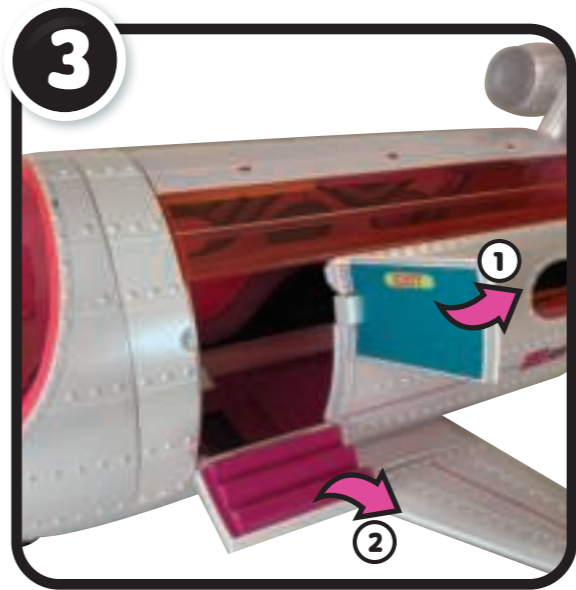
When replacing the car, insert the wheels into the openings and push down to snap in place.



PLANE

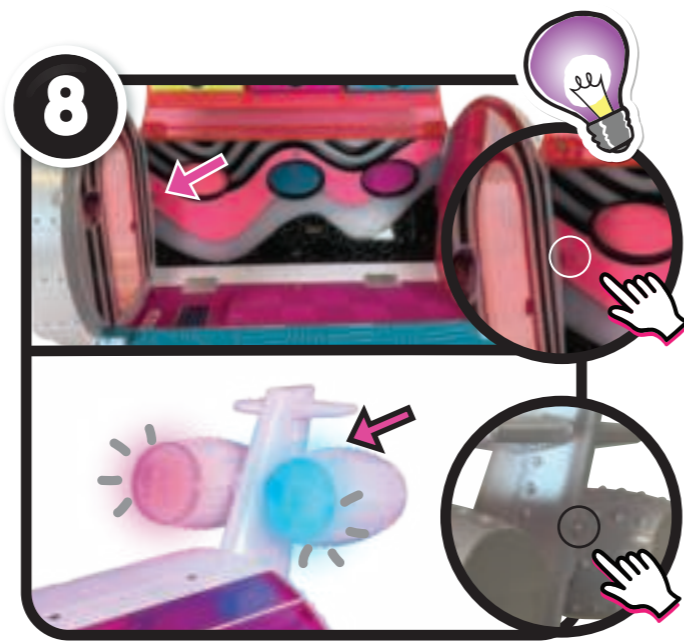


WINGS CAN BE FOLDED!



The seats can be rearranged. Lift them up, turn them around and replace the feet into the openings on the floor.



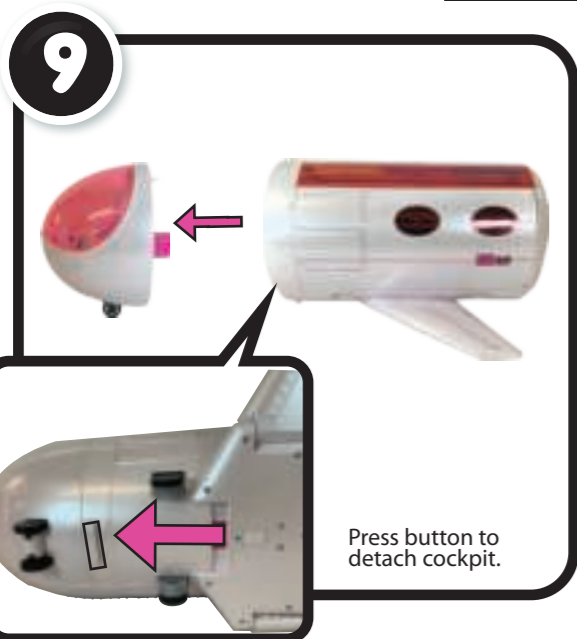


Pull button towards you to release the car.

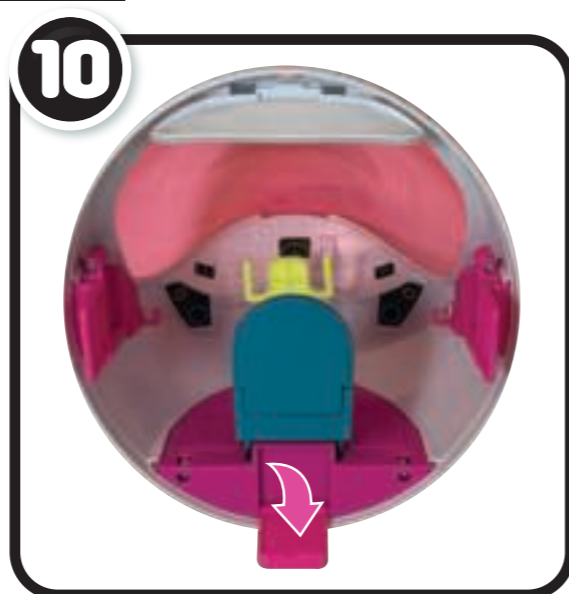
CAR



MIXING BOOTH

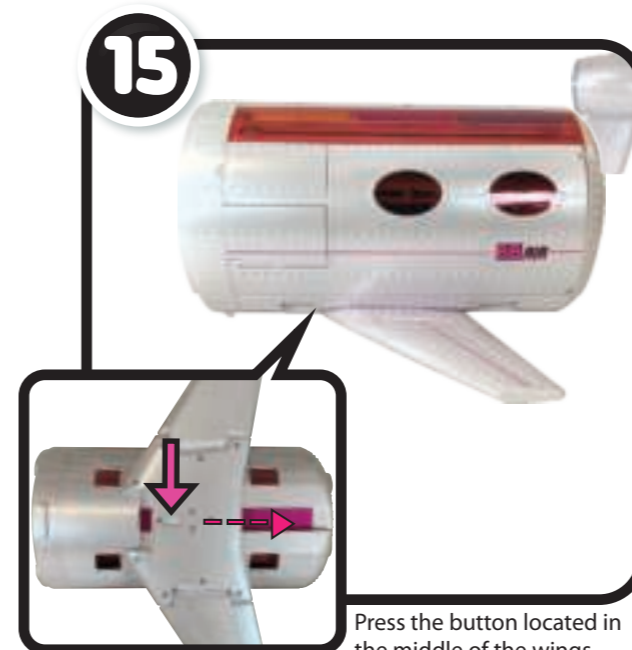


Press button to detach cockpit.



RECORDING STUDIO

IMPORTANT NOTE: Before lowering the wings, the car must be removed and the wings should be extended.



Press the button located in the middle of the wings and slide the wings down.



Place the plane in a standing position and then insert the doll stand and footrests into the openings on the floor.

