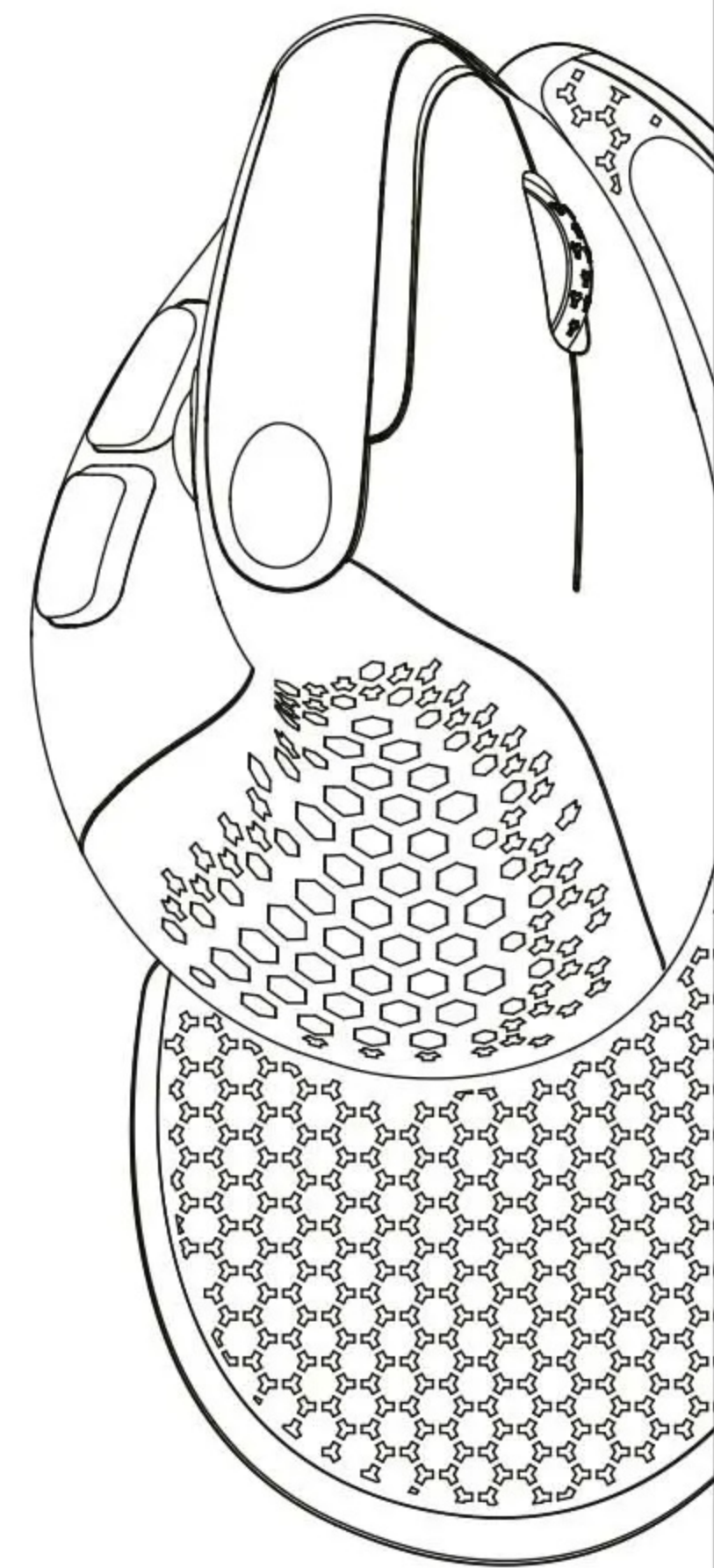




Vertical Mouse User Manual

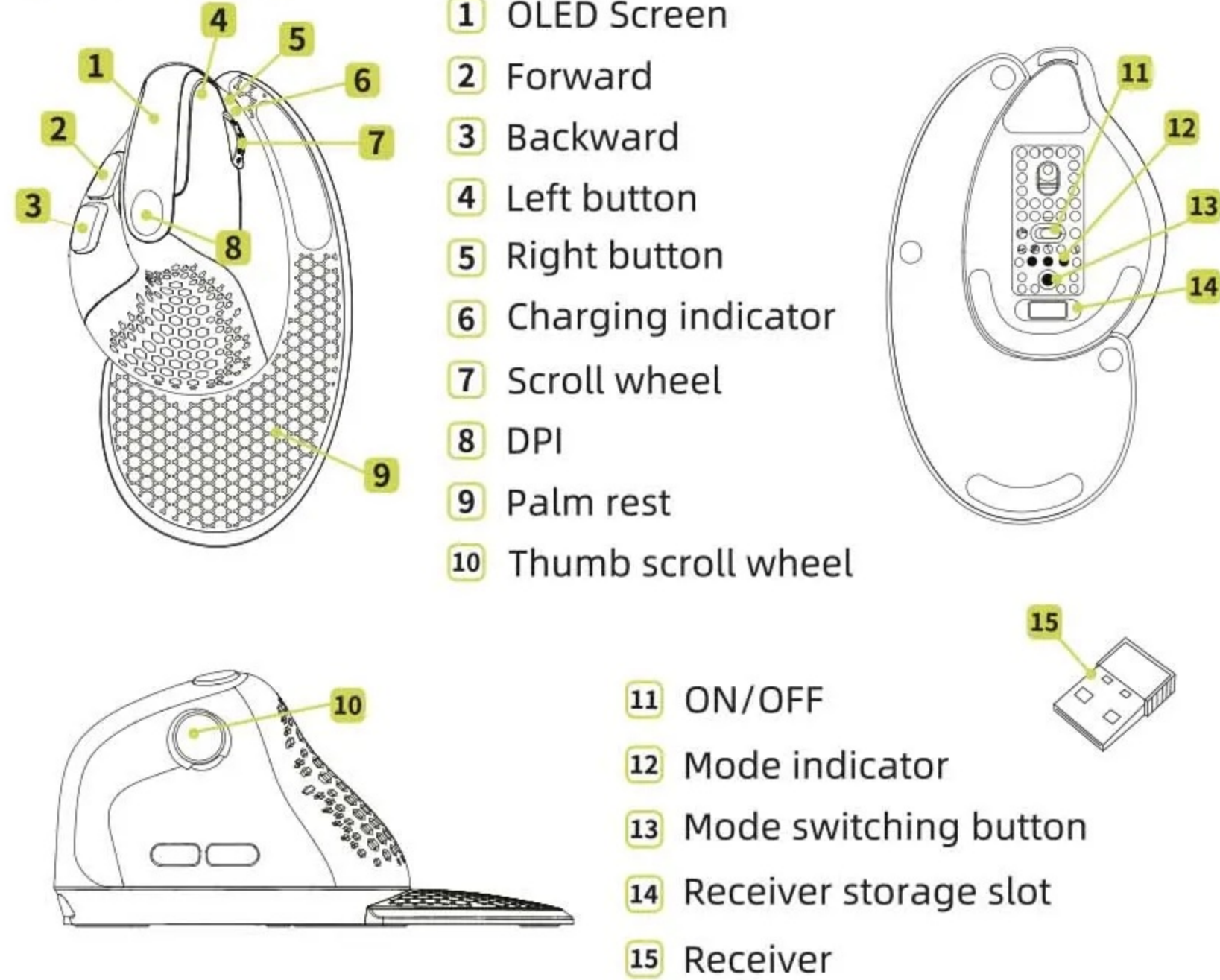


Thank you for choosing DELUX SEEKER, please read all instructions thoroughly before beginning the installation.

SYSTEM

Windows7/Windows8/Windows10/MacOS.

FUNCTIONS



Charging Mode

Connecting the mouse to the USB port via type C. The indicator light turns red when charging, the light goes off after full charged.

1.

Wired/2.4G wireless/bluetooth switching

Tap the mode switching button can switch the connected mode, the corresponding mode indicator flashes (the light goes off when wired connected)when you in one status,and the OLED screen will show you the connected mode.

Connected Mode

Wired mode : Connecting the mouse to the computer via type C, tap the switching button until the light goes off
PS. Wired mode is available to use when you turn ON or OFF the mouse.

2.4G Wireless mode : Turn on the mouse after inserting the receiver into device,then tap the switching button to 2.4G wireless mode. The mouse can be used when the corresponding indicator light goes off. (If you need to reset the mode : press the switching button for about 3s when you are in the 2.4G mode, the indicator light flashes quickly then goes off means you reset the mode successfully.)

BT mode : Turn on the mouse, tap the switching button to BT1/BT2 mode. The corresponding indicator light flashes means you entered the BT mode. The indicator light will flash quickly when you press the switching button for about 3s, then you can find "BT5.0MOUSE1 " or "BT5.0MOUSE2 " to connect. The indicator light will go off when you connect successfully.

Light mode switching

5 types of light can be switched when you press right button and backward button at the same time. (the driver can adjust the backlight too)

2.

Automatic sensing Light

The default is to turn on the light sensation. The backlight goes off when your palm is close to the mouse. Press the right and left button at the same time for about 3s, the light sensation turns off when flashed 2 times white light. Long press the right and left button to reopen the light sensation.

Hot key to close the side button's function

Press forward button + backward button for 3s can close these two buttonsfunction. Long press these two button can reopen the function.

DPI switching

Tap DPI button to switch the DPI. 800 (red light) - 1200 (green light) - 1600 (blue light) - 2400 (purple light) - 4000 (yellow light), Switching DPI successfully when the corresponding light flashed twice. Default DPI : 1200 (600-4000).

Report rate

Wired/2.4G mode : 125Hz-250Hz-500Hz-1000Hz, BT mode : 125Hz Default 500Hz, can be changed by the driver.

Thumb scroll wheel

Rolling up → Moving to the left
Rolling down → Moving to the right (can be used in office software, browser, etc)

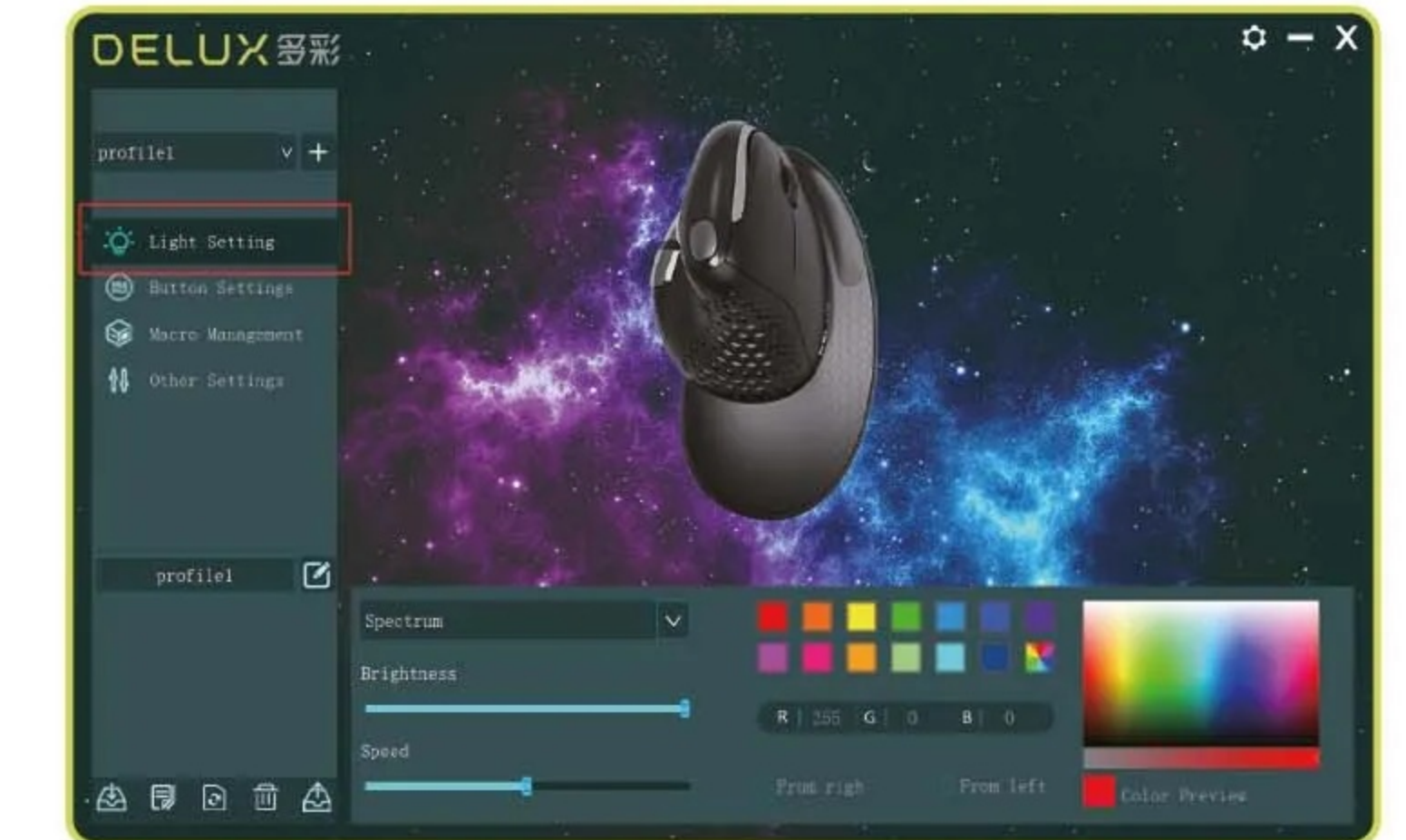
3.

Driver installation

- **Installation**
Download from DELUX website : www.deluxworld.com.
- **Setting**
Opening the driver (when using the mouse) to set the functions.

• Multi-group file configuration

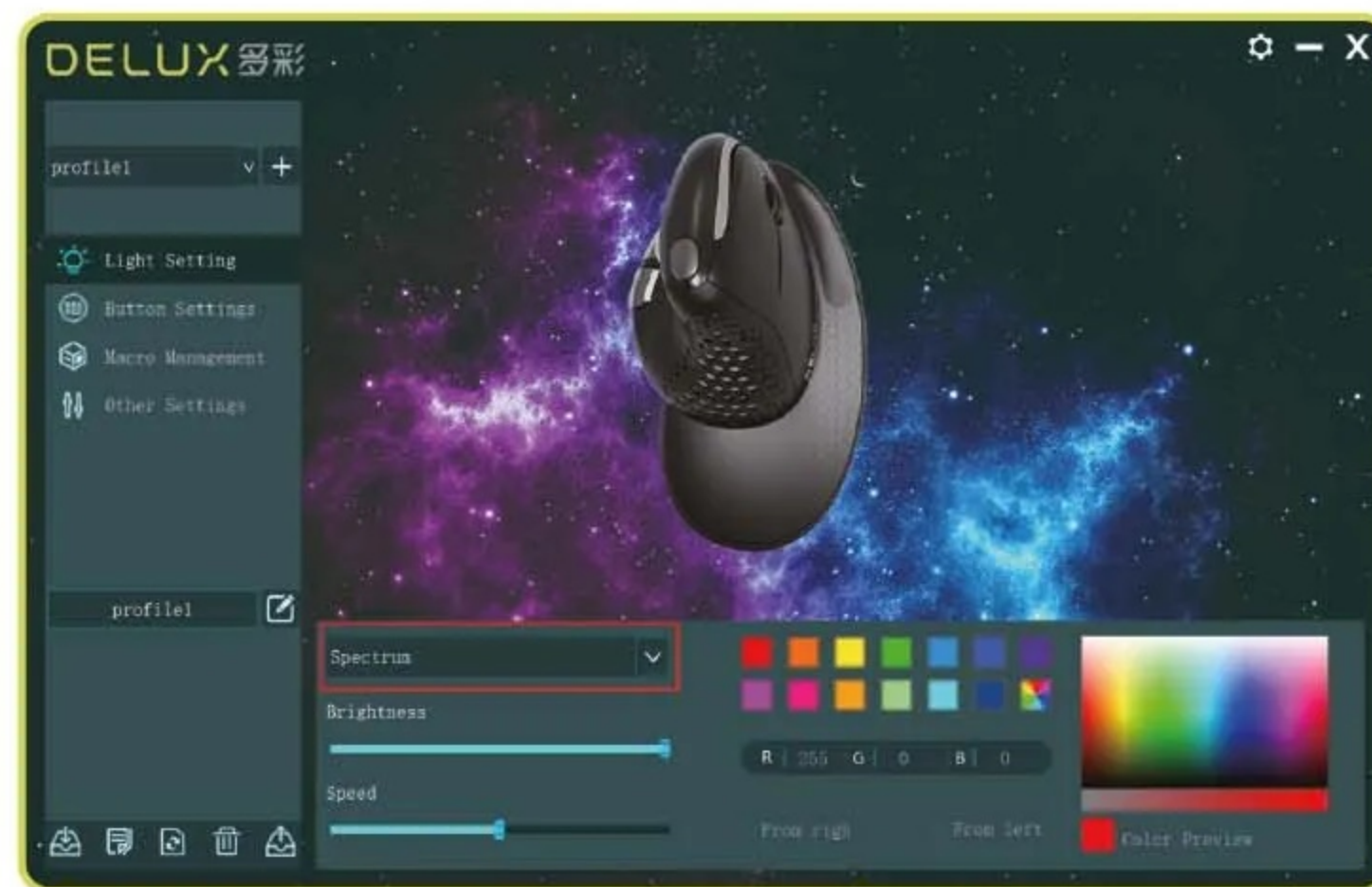
- Click "+" on the top-left of the interface to create a new configuration file.
- Click The current configuration file can be deleted.
- Click The current configuration file can be copied.
- Click The current configuration file can be renamed.



4.

• Light setting

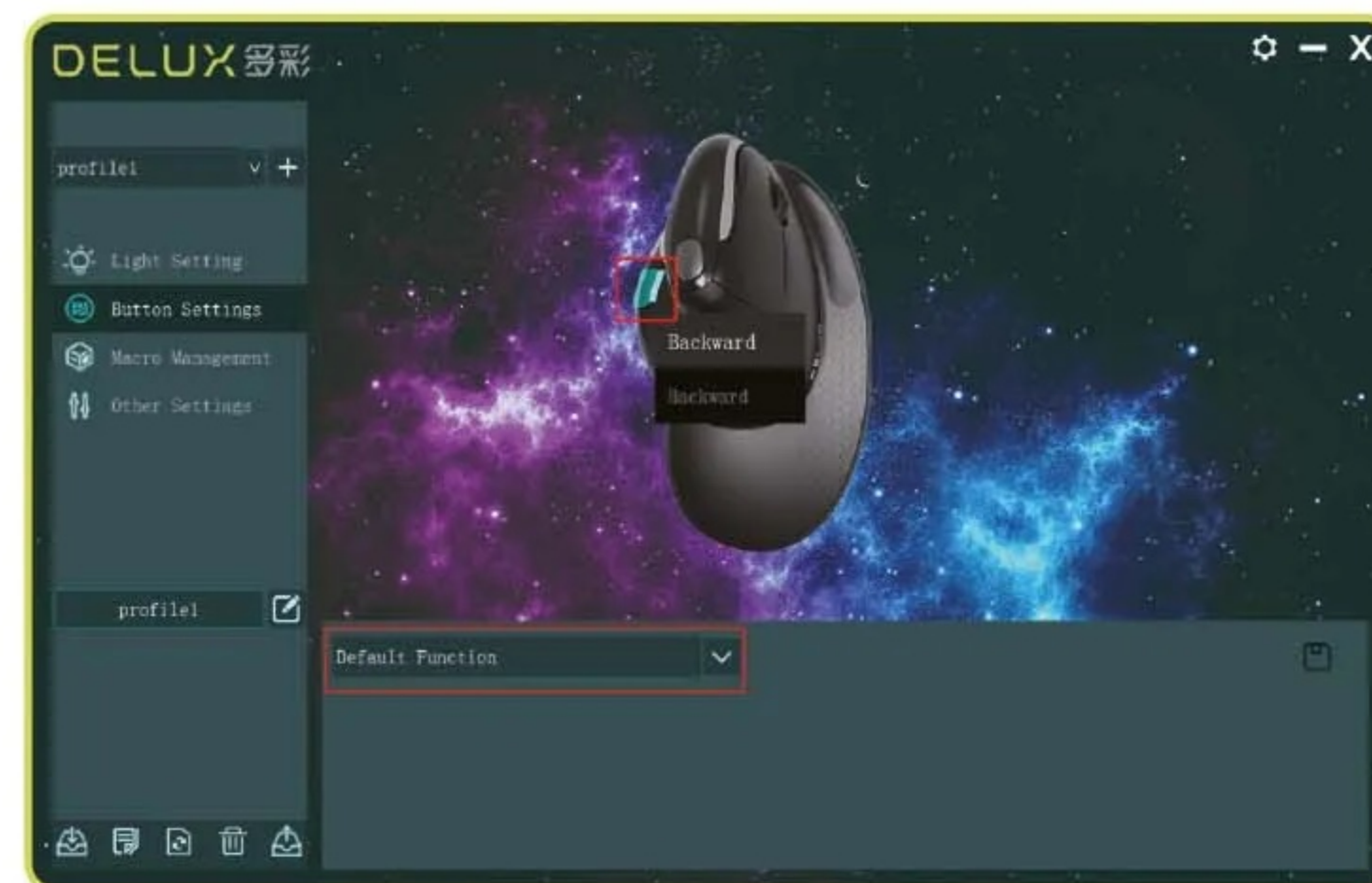
Click "Light setting" to set the light.



5.

• Button setting

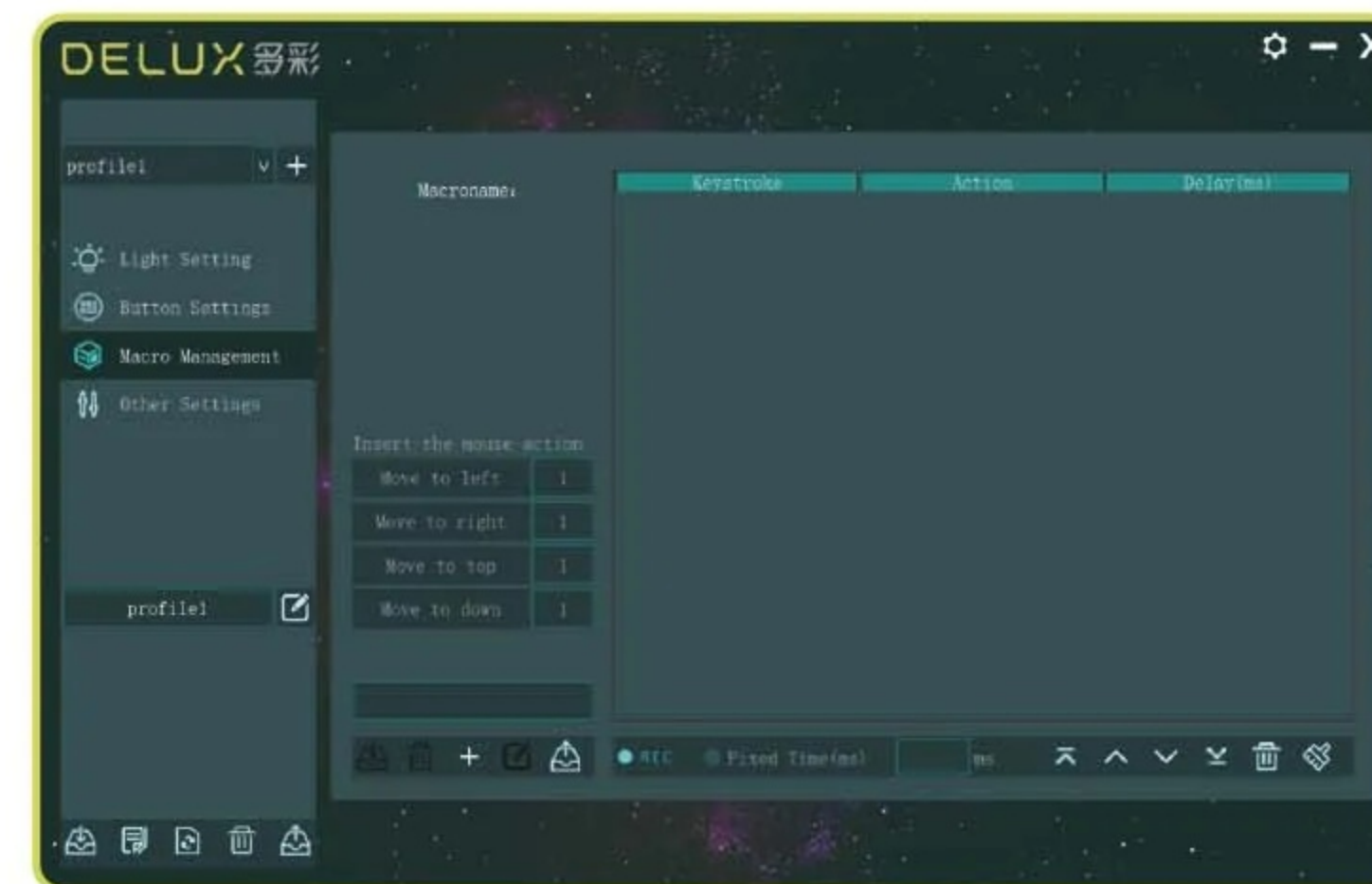
Click "Button settings" to set the buttons. Click after all settings done.



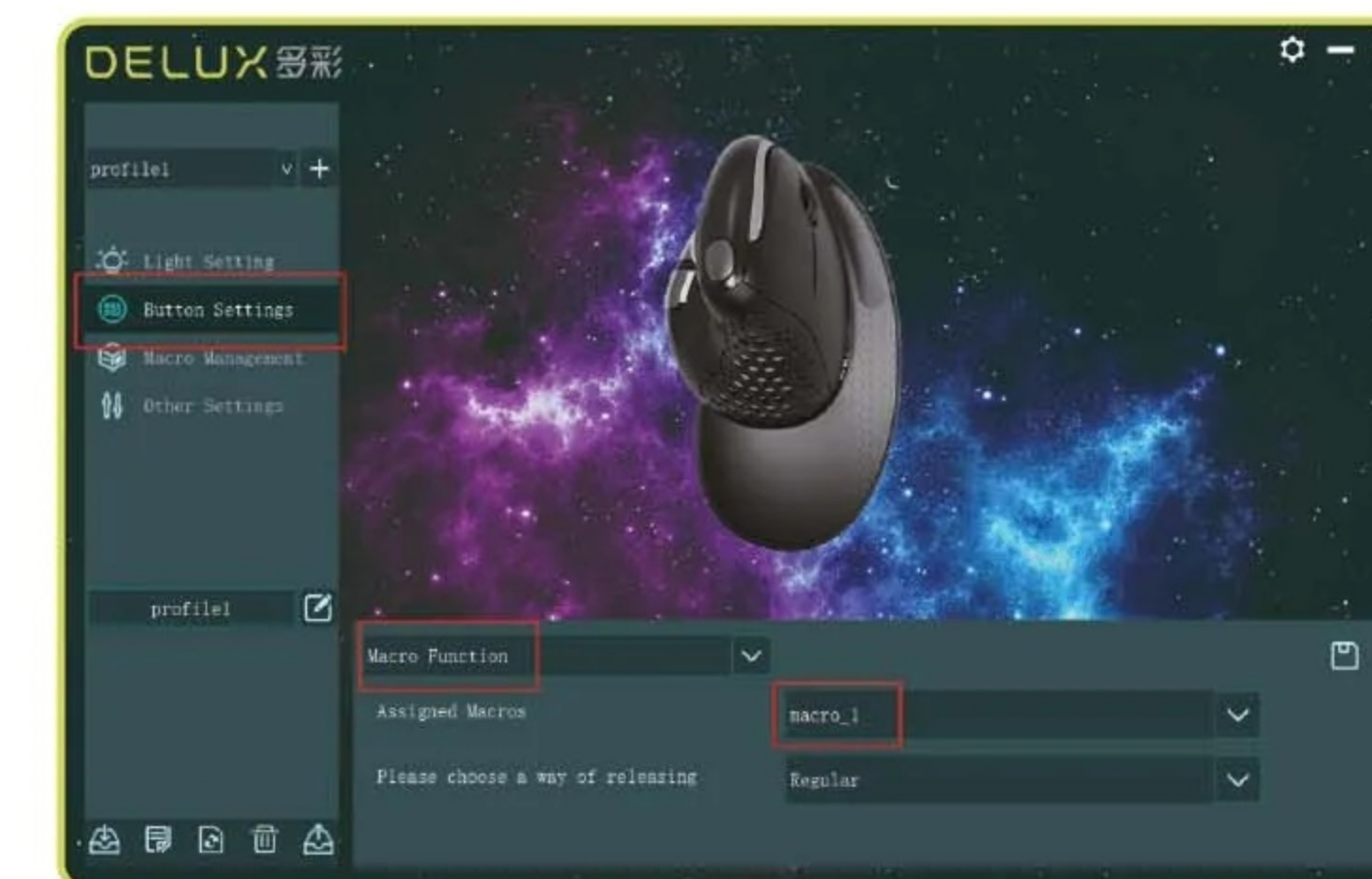
6.

• Macro management

Click "Macro management" to set the Macro. Click "+" to create a new Macro, then click "REC" to record. Entering the key that you need on the keyboard when recording. Click "STOP" to stop the Macro recording. Import Macro instruction:select the button you need to set, then click "Macro function" to choose Macro name, then click "save" to complete the setting.



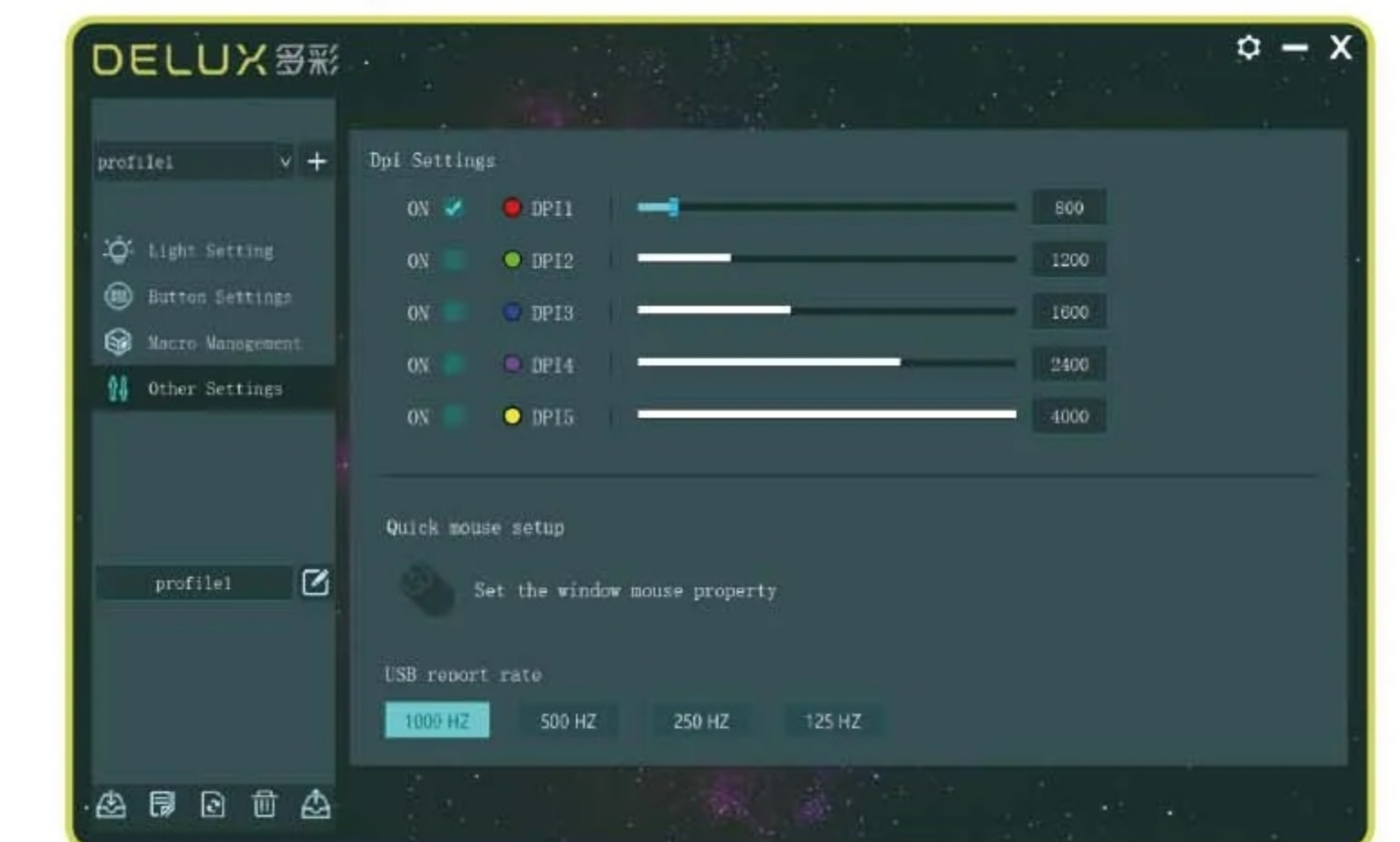
7.



8.

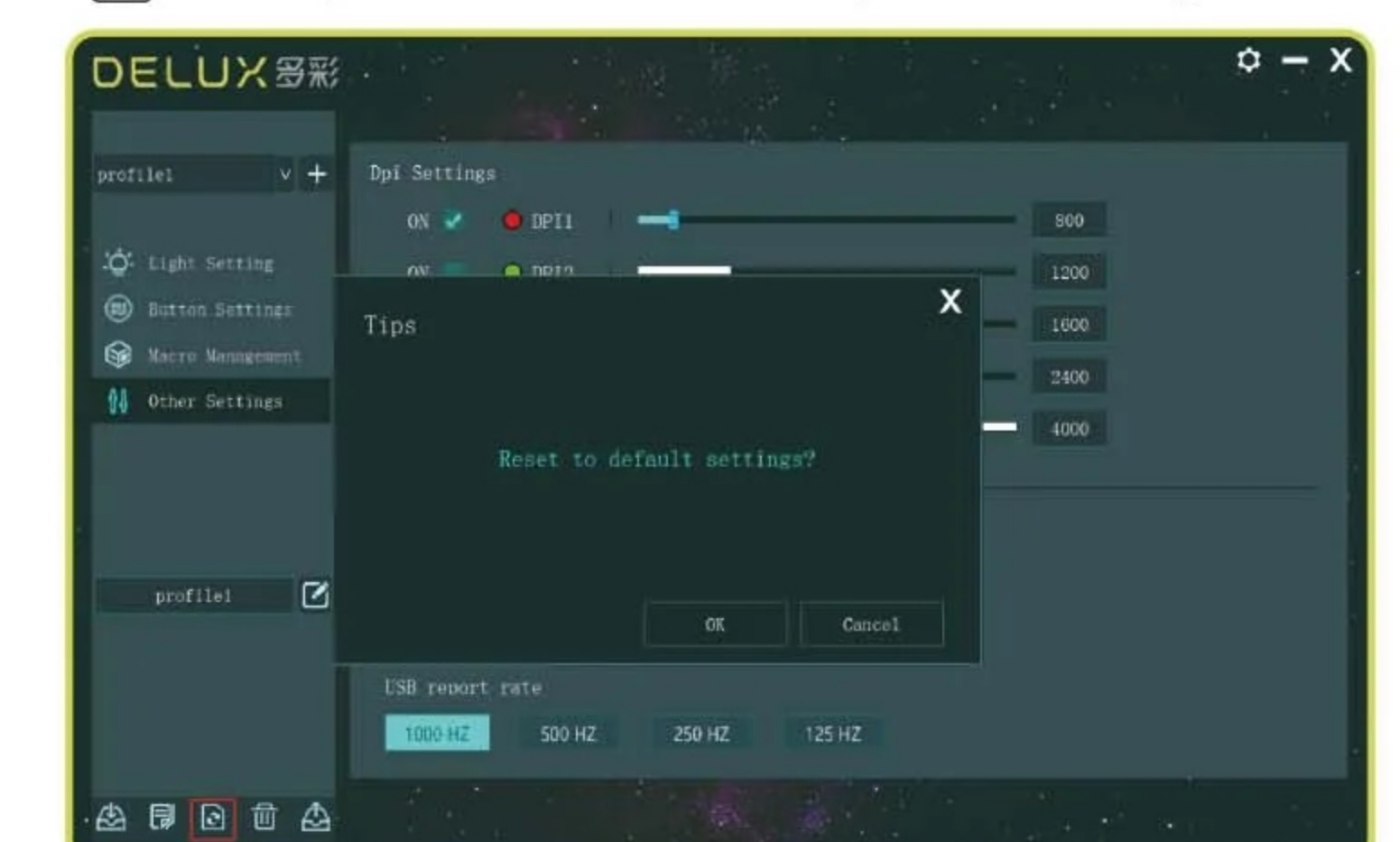
• DPI setting

Click "Other settings" to set the DPI.



• Default Settings

Click to reset, then click "OK" to complete the setting.



9.