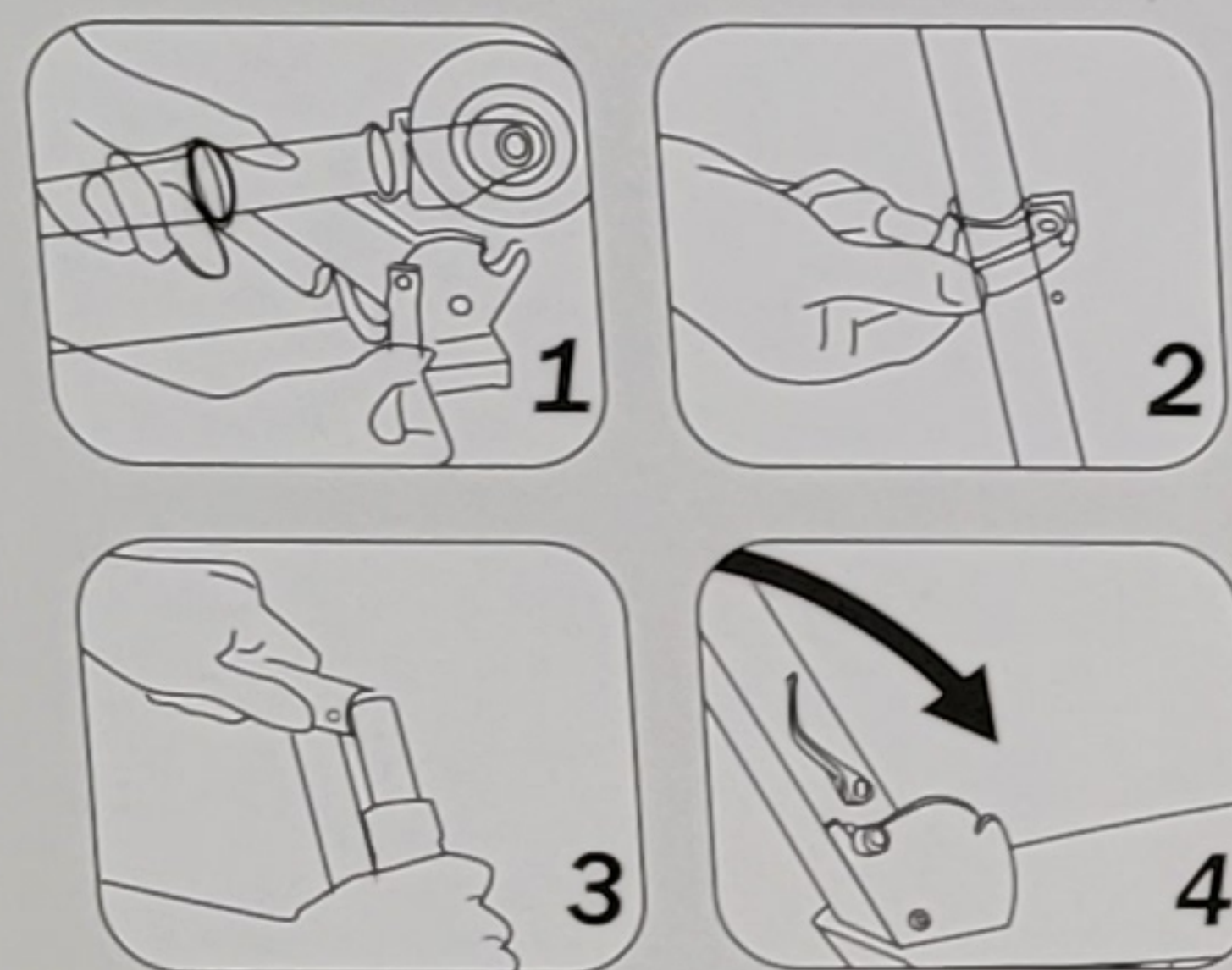


# Sajan

Importer:

PDK TRADING B.V.  
De Draai 3-L-16  
9076 PD Sint Annaparochie  
The Netherlands.  
Made in China



D200mm



### Safety information

- Observe all applicable traffic rules and all local and national regulations regarding the use of scooters.
- This product may only be used by one person at a time.
- Use this scooter only on suitable surfaces that are flat, clean, and dry, and if possible without any other road users present.
- Wet, slippery or uneven surfaces will negatively impact the traction of the wheels and therefore can cause accidents and falls. Do not drive through mud, water, or puddles, and do not ride the scooter on ice or snow.
- For your own safety, always wear protective clothing.
- Never ride without helmet, hand/wrist protection, elbow protection, or knee protection.
- Before you start: Check all components for integrity and tightness.
- Avoid sloping terrain or very steep stretches.
- Only use with suitable shoes that ensure safe and firm footing.
- Do not ride at darkness and/or under conditions of poor visibility.
- Always be aware of pedestrians and other road users. Be considerate of other persons.
- Always bear in mind that any kind of trick/stunt will reduce your control over the scooter. The risk of injury and the requirements towards user and material increase with the difficulty of tricks or stunts.
- The user alone is responsible for all risks in regards to tricks/stunts when driving.
- Maximum load 100 kgs
- It's not use meant for extreme sports
- not for professional purposes
- Age 6+

## 30491



EN 14619: 2019

