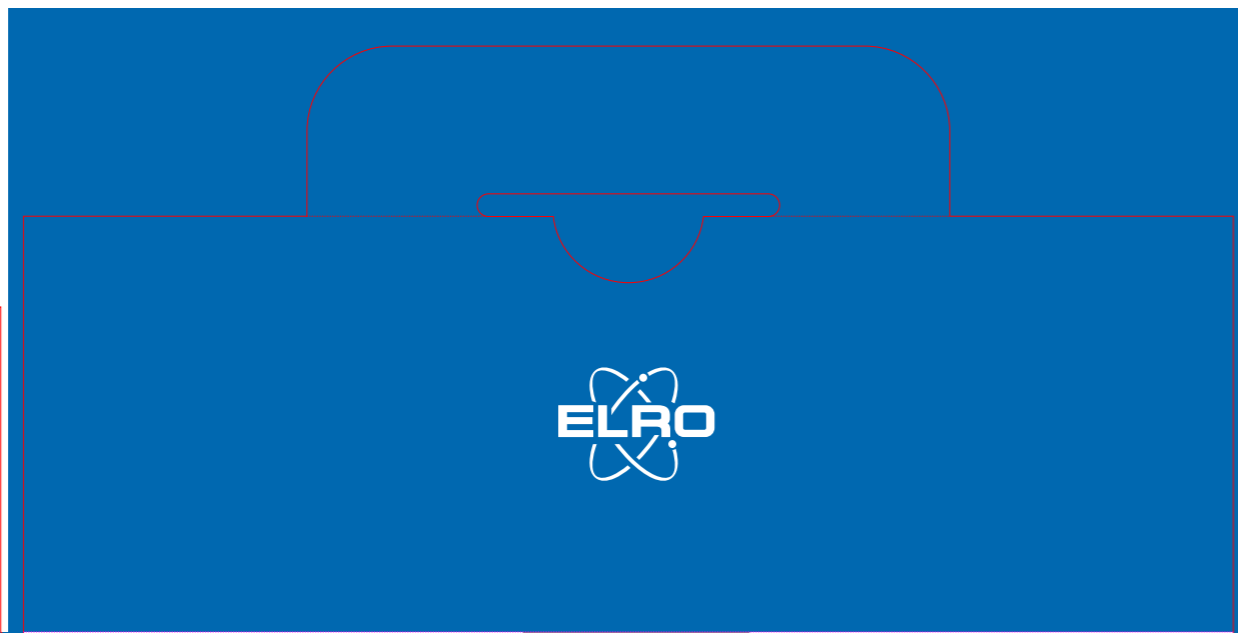


ELRO item(s)	LF60-10-W	
Revision nr.	V3	
Revision date	03-12-2021	
Material	300g carton board (grey bottom & white surface)	
Option 1		
Option 2	F corrugation in the core (middle)	
Option 3		
Size (mm)	160 (h) x 160 (w) x 55 (d)	
Contact	laurens@cosaconnects.eu	
Lot: -----	YXX = starting date of production Y = last digit of year / X = week nr. x 2	
Example	Production starts in 2018 week 2, lot number will be 804 / 8 = last digit of 2018 and / 04 = week 2 x 2	
Contact 1	demmy@green-king.cn	
Contact 2		



LF60-10-W_KMF201*10W
Consumer package
Inner Carton
Outer Carton

EAN Pieces
8719699346390 1
8719699347670
8719699347700



EN Energy efficient 10W high power LED 800 lumen

- Ultra flat, modern design
- With class I security glass
- IP54 Waterproof

DE Energieeffiziente 10-W-Hochleistungs-LED 800 Lumen

- Ultraflaches, modernes Design
- Mit Sicherheitsglas der Klasse I
- IP54 Wasserdicht

NL Energie-efficiënte 10W hoog vermogen LED 800 lumen

- Ultraflat, modern ontwerp
- Met klasse I veiligheidsglas
- IP54 waterdicht

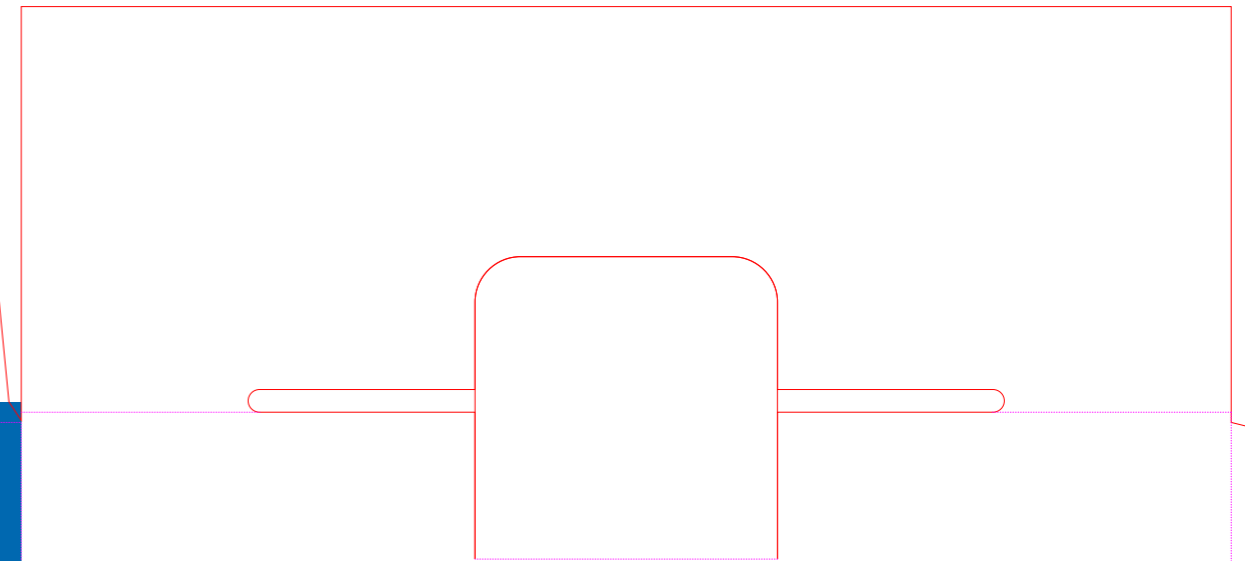
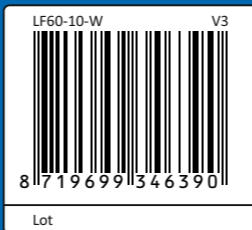
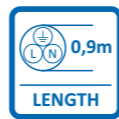
EN LED haute puissance 10W à haut rendement énergétique 800 lumen

- Design ultra plat et moderne
- Avec verre de sécurité de classe I
- Étanchéité IP54

LED FLOODLIGHT 10 WATT

LF60-10-W

Home is not a place, it's a feeling



LED FLOODLIGHT 10 WATT



90 mm

120 mm

EN SPECIFICATIONS	DE TECHNISCHE DATEN	NL SPECIFICATIE	FR SPECIFICATIONS	ELRO_LF60-10-W
Power	Leistung	Vermogen	Puissance	AC 220V-240V, 50Hz
Power Cord	Netzkabel	Stroomdraad	Cordon d'alimentation	H05RN-F, 3G, 0,75mm ² x 90 cm
Lighting Load	Beleuchtungsbelastung	Verlichtingsbelasting	Charge d'éclairage	10W
Working Temperature	Arbeitstemperatur	Werktemperatuur	Température de fonct.	-20°C ~ 40°C (95%RH max)
Mounting Height	Montagehöhe	Montagehoogte	Hauteur de montage	1.8 ~ 2.4m
Size/Weight	Größe / Gewicht	Formaat / Gewicht	Taille poids	12 x 9 cm / 300gr.
Swivel angle	Schwenkwinkel	Draaihoek	Angle de pivotement	Vertical 90°
Lumen (lm)	Lumen (lm)	Lumen (lm)	Lumen (lm)	>800 lm
Color Temperature(K)	Farbtemperatur (K)	Kleurtemperatuur (K)	Température de couleur (K)	6500K ± 250K
Beam Angle	Strahlwinkel	Breedtehoek	Angle de faisceau	100°
Life Span (hours)	Lebensdauer (Stunden)	Levensduur (uren)	Durée de vie (heures)	>18,000 (Hrs)
Protection Class	Schutzklasse	Beschermingsklasse	Classe de protection	Class I
Protection Degree	Schutzgrad	Beschermingsgraad	Degré de protection	IP54
Application	Anwendung	Toepassing	Application	Outdoors & Indoor Use

ELRO Europe | www.elro.eu
Postbus 9607 - Box E800
1006 GC Amsterdam The Netherlands

