

EK06188皂液器使用说明书

6折页_折叠尺寸:90*130mm

展开尺寸:130*540mm

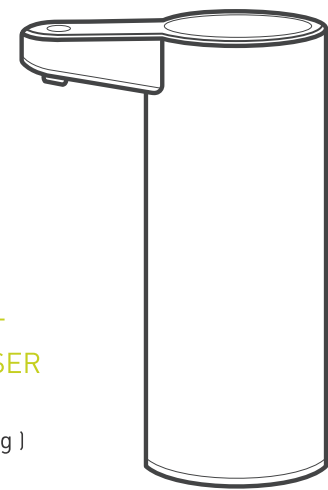
纸张:157g哑粉纸

C:20 M:0 Y:100 K:8

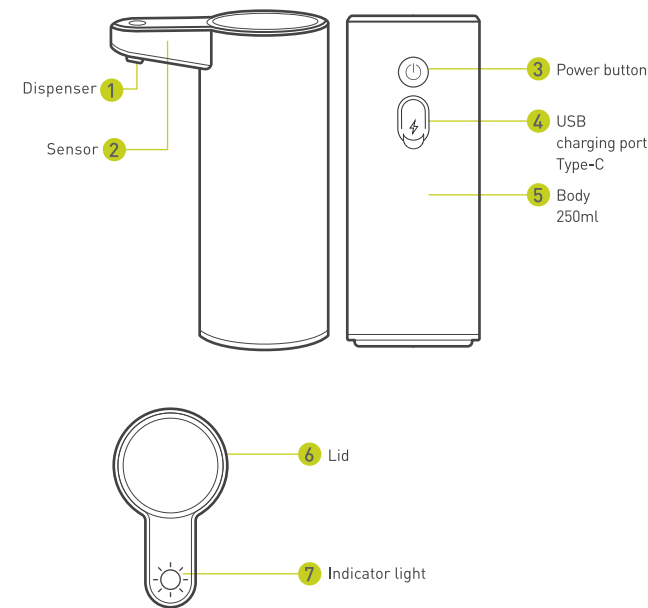
EKO SENSIBLE
ECO
LIVING

AROMA SMART
SOAP DISPENSER

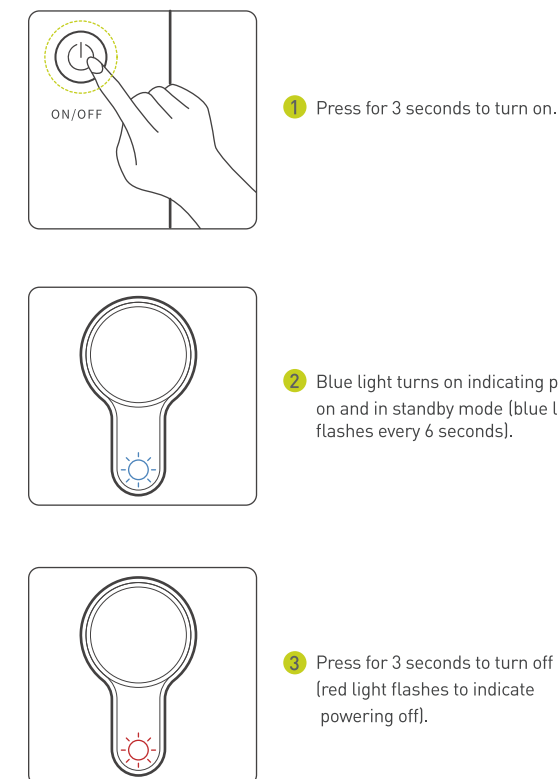
EK6188F (Foaming)
EK6188L (Liquid)



Product Introduction



Power ON/OFF

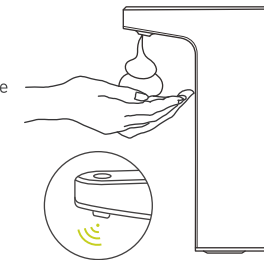


Operating Instructions

1 Sensor detected dispensing

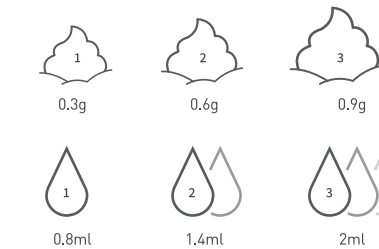
Place hand within 8 cm (+/- 2cm) below the sensor to dispense soap. Device returns to standby mode (blue light flashes every 6 seconds) after dispensing.

* For first time use, or first use after a soap refill, place hand underneath the sensor to activate it 5 times for device to begin pumping.



2 Adjusting amount

Press button to adjust amount of soap desired. Continue pressing up to 3 times to increase dispensing amount with each press.
Level 1: Blue light flashes once, dispenser pumps 0.3g foam/0.8ml liquid.
Level 2: Blue light flashes twice, dispenser pumps 0.6g foam/1.4ml liquid.
Level 3: Blue light flashes three times, dispenser pumps 0.9g foam/2ml liquid.

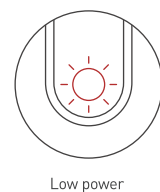


Thank you for choosing the **Aroma Smart Soap Dispenser**. Please read these instructions before using the product. Graphics are for illustrative purposes only.

Charging

1 Low power

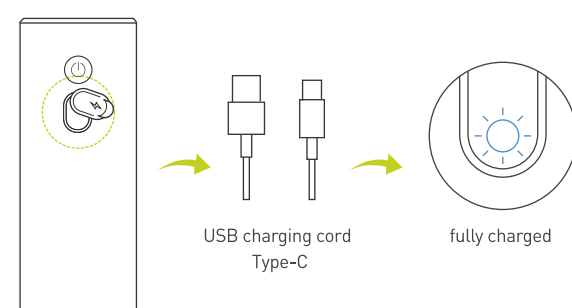
In standby mode, indicator light flashes red to signal low power.
* Dispenser can be used 20 times before it turns off automatically.



2 USB charging

Use USB charging cord provided to charge the dispenser (adaptor plug not included). While charging, indicator light slowly flashes red. When indicator light turns blue without flashing, dispenser is fully charged.

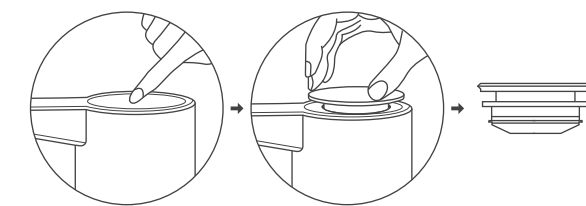
* Use 5V/1A adaptor charging plugs from reputable brands.
* Device cannot be used while charging.
* Charging time: approximately 2 hours.



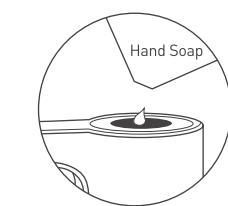
Refill

1 When amount of soap dispensed is lower than normal, refill with soap. Before refilling, switch off the power.

2 Press the top to pop open the lid.



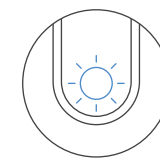
3 Pour soap into the opening at the top. Place lid back onto dispenser, then turn on power to continue use.



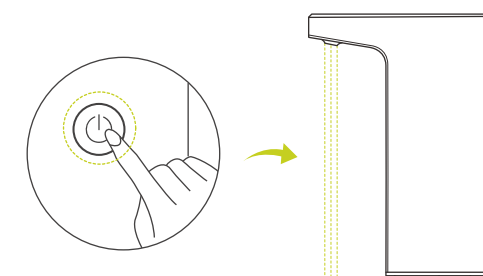
* Dispenser holds up to 250mL.
* EK6188F works only with foaming soap.
* EK6188L works only with liquid soap.

Cleaning

1 Press the power button twice, the blue light will flash continuously, then enter cleaning mode.
* In cleaning mode, blue light flashes continuously.



2 Hold down the power button to begin cleaning. Device dispenses water continuously during cleaning. Please clean the dispenser over the sink.
* Sensor pump function is deactivated in cleaning mode.



3 To manually exit cleaning mode, press the power button twice again to return to standby mode.
* Device will automatically exit cleaning mode after 20 seconds.

Product Packing List

Aroma Smart Soap Dispenser x1
USB charging cord x1
Instructions Guide x1

Care and Maintenance

Cleaning
Clean exterior with microfiber cloth, plain water and soap. Avoid using harsh chemical solutions.

Charging
Power source: built in lithium battery, please do not attempt to remove the battery or disassemble. Use 5V/1A power adaptor plugs with USB Type-C cord. Do not place under running water. Use a wet cloth to clean the exterior and use cleaning mode for interior.

Attention:
1. Charge with USB Type-C cord and recommended 5V/1A power adaptor plug.
2. For indoor use only, avoid direct exposure to sunlight.
3. Do not excessively twist or bend USB cord.
4. Clean exterior with wet microfiber cloth. Use cleaning mode function to clean the interior and pump of the dispenser.
5. Keep sensor clean and free of soap build up.
6. Using the incorrect type of soap could lead to malfunctioning of the product. Please use foaming hand soap with EK6188F, and liquid hand soap with EK6188L.
7. Do not use the product while it is charging.
8. Do not disassemble parts or attempt repair. Doing so will void the warranty.

Troubleshooting

No sensor (blue light does not turn on)

Check if device is low in power
1. Check if hand is within sensor range
2. Check if sensor is clean and free of dirt/soap build up

Blue light indicator flashes frequently

Device is in cleaning mode. Press power button twice to exit cleaning mode and return to standby mode for normal operation.

Blue light is on, but no flow of soap

Check if the correct type of soap is used (liquid vs. foam).

New dispenser first time use/first use after soap refill

Place hand underneath sensor pump and activate sensor for at least 5 pumps.

* Contact your local after-sales service channel for EKO products if issues persist after troubleshooting.

Warranty Information

Check with local EKO retailers and distributors for more warranty information.

Not Covered by Warranty

- Damages due to user mishandling or other than its intended use in a typical household activity.
- Damages due to natural disasters such as fire, earthquake, flood and other Force Majeur events.
- Damages including dents, scratches, and water damage due to transport handled by the user.
- Any modification to the product, including disassembly or attempts to repair by the user.
- Intentional damage to the product.

* To request after-sales service, please provide proof of purchase from EKO authorized retail channels.

* All copyrights belong to EKO.

FC CE RoHS