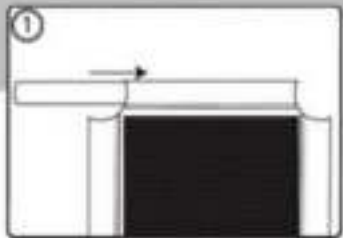
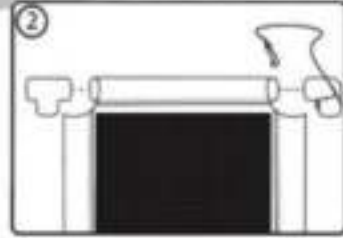


# MULTI CAT WINDOWPERCH

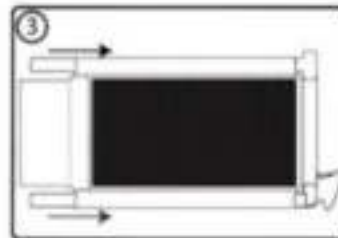
Assembly instruction



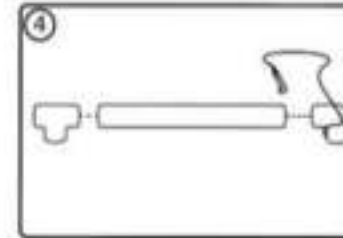
01. With the velcro face down, at the opposite end thread short PVC pipe through the end of the mat.



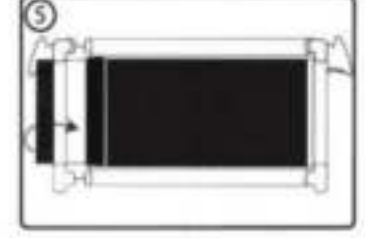
02. Connect tee joint & elbow joint to either end of pipe. Loop end of wire over open end of elbow joint.



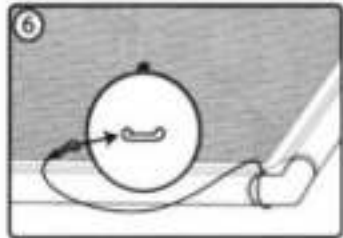
03. Thread long PVC pipe length ways through the front and back of the mat.



04. Connect tee joint & elbow joint to either end of pipe. Loop end of wire over open end of elbow joint.



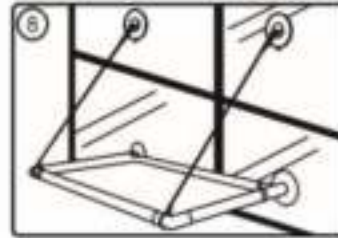
05. Secure long PVC pipe into all joints and fold velcro around the second short length.



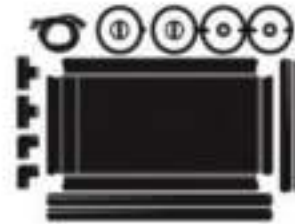
06. Attach hook end of cable onto handle



07. Fit suction cups with round top into the open end of the tee joint.



08 Completed installation



Nurturing Best Friends!

Included in box

- Nylon mesh mat
- PVC Pipe x1
- Elbow joint x2
- Tee joint x2
- Suction cups x4
- Cable with hook x2

When mounting Cat Window Hammock for the first time, clean glass surface and suction cups thoroughly, firmly pressing suction cups to window. Make sure Cat Window Hammock bed is level and securely suctioned to the glass be for use.