

BREW GROUP MAINTENANCE

All Saeco fully automatic machines are equipped with a removable brew group. This patented technology allows you to thoroughly clean the parts of the brew group in contact with coffee and the entire brewing area inside the machine.

This brew group maintenance kit comes with 2 different O-rings, as shown on the previous page (small and large). Before starting the instructions on the following pages, overturn the brew group, and choose the correct O-ring size based on the images below. (The following images show the filter screen with the upper part of the brew group removed. This is for demonstration purposes only; the upper part of the brew group should never be removed.)



Suitable O-ring for the brew group.



The O-ring is too narrow

Unsuitable O-ring for the brew group.



The O-ring is too wide

Wash the brew group with running water at least once a week. Lubricate the brew group tracks and replace the O-ring after approximately 500 brewing cycles.

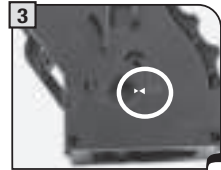
WARNING! Do not wash the brew group with harsh or abrasive detergents or chemicals which could prevent it from operating correctly. Do not wash it in the dishwasher.



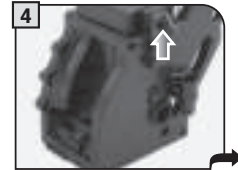
1 Rinse off any coffee residues from the brew group.



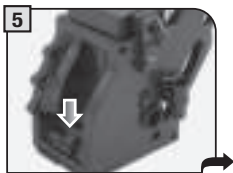
2 Wash the upper filter with running water.



3 Make sure the brew group is in the rest position; the two references must match.



4 Make sure that all components are in the correct position. The hook shown in the picture must be in the upright position. To check its position, press the "PUSH" button firmly.



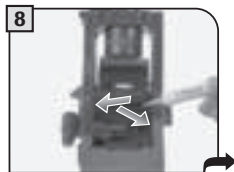
5 The lever on the rear part of the brew group must be in contact with the base.



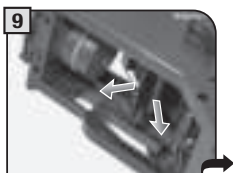
6 Remove the O-ring.



7 Insert the new O-ring.



8 Lubricate the brew group guides by using the supplied lubricant only.



9 Apply the lubricant evenly.



10 Apply the lubricant evenly.

Blank lined area for notes.

