



TEST REPORT

Page 1 of 13

REPORT No.:CTB230111014CX

Applicant: Shenzhen Dazhi Technology CO.,LTD
Address: Room 21 E, Shidai Center, NO. 102 Center Road, Shajing Street, Baoan District, Shenzhen, China




Manufacturer: Shenzhen Dazhi Technology CO.,LTD
Address: Room 21 E, Shidai Center, NO. 102 Center Road, Shajing Street, Baoan District, Shenzhen, China

The following samples were submitted and identified on behalf of the clients as:

Sample name: Rain Cloud Humidifier
Brand: /
Model(s): CH08, CH06, CH10, CH12
Sample received date: Jan 07, 2023
Testing period: Jan 07, 2023 to Jan 11, 2023
Test Method: Please refer to next page(s).
Test Result: Please refer to next page(s).

Result Summary :

Test Requested	Conclusion
European Directive 2011/65/EU and amendment (EU) 2015/863 on the restriction of the use of certain hazardous substances in electrical and electronic equipment	PASS

Tested By: 	Check By: 	Approve By: 
--	---	---

Date: Jan 12, 2023

Test Method:

A. Screening test by XRF spectroscopy

XRF screening limits for regulated elements according to IEC 62321-3-1:2013

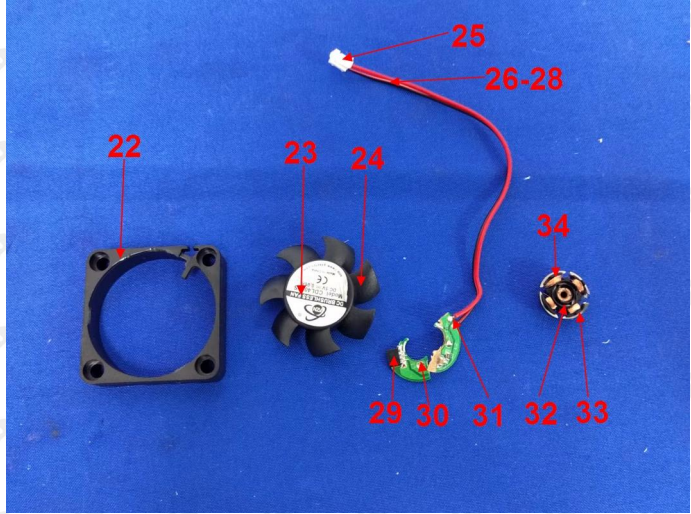
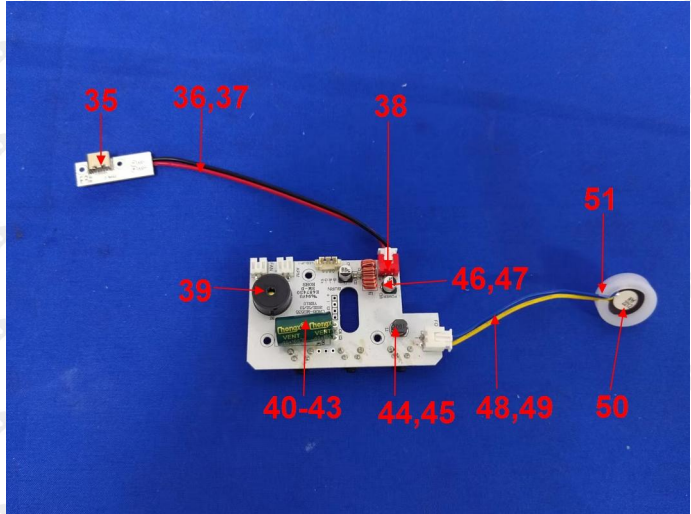
Element	Screening limit / mg/kg		MDL	
	Polymers and metals	Composite material	Polymers	Other material
Pb	$BL \leq (700-3\sigma) < X < (1300+3\sigma) \leq OL$	$BL \leq (500-3\sigma) < X < (1500+3\sigma) \leq OL$	10mg/kg	50mg/kg
Cd	$BL \leq (70-3\sigma) < X < (130+3\sigma) \leq OL$	$LOD \leq (50-3\sigma) < X < (150+3\sigma) \leq OL$	10mg/kg	50mg/kg
Hg	$BL \leq (700-3\sigma) < X < (1300+3\sigma) \leq OL$	$BL \leq (500-3\sigma) < X < (1500+3\sigma) \leq OL$	10mg/kg	50mg/kg
Cr	$BL \leq (700-3\sigma) < X$	$BL \leq (500-3\sigma) < X$	10mg/kg	50mg/kg
Br	$BL \leq (300-3\sigma) < X$ (non-metal only)	$BL \leq (250-3\sigma) < X$	10mg/kg	50mg/kg

B. Chemical Test

Test Item(s)	Test Method	Analysis Equipment(s)	MDL	Limit
Lead (Pb)	IEC 62321-5:2013	ICP-OES	2 mg/kg	1000mg/kg
Cadmium (Cd)	IEC 62321-5:2013	ICP-OES	2 mg/kg	100mg/kg
Mercury (Hg)	IEC 62321-4:2013+AMD1:2017	ICP-OES	2 mg/kg	1000mg/kg
Hexavalent Chromium Cr(VI)	IEC 62321-7-1:2015	UV-VIS	- -	1000mg/kg
	IEC 62321-7-2:2017		8 mg/kg	1000mg/kg
Polybrominated Biphenyls (PBBs)	IEC 62321-6:2015	GC-MS	50mg/kg	1000mg/kg
Polybrominated Diphenyl Ethers (PBDEs)	IEC 62321-6:2015	GC-MS	50mg/kg	1000mg/kg
Phthalate	IEC 62321-8:2017	GC-MS	50mg/kg	1000mg/kg

Tested material list

No.	Description	Photos
1	White plastic shell	
2	Transparent plastic case	
3	White plastic case	
4	White plastic case	
5	White plastic ring	
6	Off-white plastic button	
7	White plastic cover	
8	Silver metal mesh sheet	
9	Silver metal screw	
10	Silver metal screw	
11	Silver metal screw	
12	Silver metal screw	
13	Silver metal screw	
14	White rubber ring	
15	White translucent plastic ring	
16	Silver meta spring	
17	Transparent rubber tube	
18	Off-white plastic part	
19	White plastic part	
20	White rubber part	
21	White plastic sheet	

22	Black plastic shell	
23	Silver plastic label	
24	Black plastic fan	
25	White plastic wire buckle	
26	Black plastic outer wire skin	
27	Red plastic outer wire skin	
28	Metal core	
29	Black body (IC)	
30	Green PCB	
31	Solder point	
32	Black plastic frame	
33	Silver metal case	
34	Copper colored metal wire	
35	Silver metal case (charging port)	
36	Black plastic outer wire skin	
37	Red plastic outer wire skin	
38	Red plastic wire buckle	
39	Black buzzer	
40	Green plastic film	
41	Silver metal pins	
42	Black rubber	
43	Silver metal pins	
44	Black ceramic (inductor)	
45	Copper colored metal wire (inductor)	
46	Silver metal case (E-CAP)	
47	Black plastic base	
48	Yellow plastic outer wire skin	
49	Blue plastic outer wire skin	
50	Black ceramic sheet	
51	White rubber sleeve	

52	Solder point	
53	White PCB	
54	Silver metal case (button)	
55	Black plastic (button)	
56	Black body	
57	Black optical coupler	
58	Black body	
59	Silver metal pins	
60	Black plastic outer wire skin	
61	Red plastic outer wire skin	
62	Black plastic wire skin	
63	Black coating	
64	Black plated metal case	
65	White plastic part	
66	Black plastic part	
67	Black plastic inner wire skin	
68	Silver plastic film	
69	White plastic inner wire skin	
70	Green plastic inner wire skin	
71	Red plastic inner wire skin	
72	White plastic wire skin	
73	White plastic handle	
74	Silver metal case (charging head)	
75	Silver metal case (USB)	
76	White plastic (USB)	
77	Silver metal pins (USB)	
78	White plastic handle	

79	White LED	
80	White PCB	
81	White plastic part	
82	Black plastic part	

Test Result(s):

No.	XRF screening Result					Chemical confirm Result (mg/kg)	Remark	Conclusion
	Pb	Cd	Hg	Cr	Br			
1	BL	BL	BL	BL	BL	---	---	PASS
2	BL	BL	BL	BL	BL	---	---	PASS
3	BL	BL	BL	BL	BL	---	---	PASS
4	BL	BL	BL	BL	BL	---	---	PASS
5	BL	BL	BL	BL	BL	---	---	PASS
6	BL	BL	BL	BL	BL	---	---	PASS
7	BL	BL	BL	BL	BL	---	---	PASS
8	BL	BL	BL	104189	N.A	Cr ⁶⁺ : Negative	---	PASS
9	BL	BL	BL	BL	N.A	---	---	PASS
10	BL	BL	BL	BL	N.A	---	---	PASS
11	BL	BL	BL	BL	N.A	---	---	PASS
12	BL	BL	BL	BL	N.A	---	---	PASS
13	BL	BL	BL	BL	N.A	---	---	PASS
14	BL	BL	BL	BL	BL	---	---	PASS
15	BL	BL	BL	BL	BL	---	---	PASS
16	BL	BL	BL	58220	N.A	Cr ⁶⁺ : Negative	---	PASS
17	BL	BL	BL	BL	BL	---	---	PASS



TEST REPORT

Page 7 of 13

REPORT No.:CTB230111014CX

18	BL	BL	BL	BL	BL	---	---	PASS
19	BL	BL	BL	BL	BL	---	---	PASS
20	BL	BL	BL	BL	BL	---	---	PASS
21	BL	BL	BL	BL	BL	---	---	PASS
22	BL	BL	BL	BL	534	PBB&PBDE:N.D	---	PASS
23	BL	BL	BL	BL	BL	---	---	PASS
24	BL	BL	BL	BL	BL	---	---	PASS
25	BL	BL	BL	BL	BL	---	---	PASS
26	BL	BL	BL	BL	BL	---	---	PASS
27	BL	BL	BL	BL	BL	---	---	PASS
28	BL	BL	BL	BL	N.A	---	---	PASS
29	BL	BL	BL	BL	BL	---	---	PASS
30	BL	BL	BL	BL	BL	---	---	PASS
31	BL	BL	BL	BL	N.A	---	---	PASS
32	BL	BL	BL	BL	BL	---	---	PASS
33	BL	BL	BL	BL	N.A	---	---	PASS
34	BL	BL	BL	BL	N.A	---	---	PASS
35	BL	BL	BL	BL	N.A	---	---	PASS
36	BL	BL	BL	BL	BL	---	---	PASS
37	BL	BL	BL	BL	BL	---	---	PASS
38	BL	BL	BL	BL	BL	---	---	PASS
39	BL	BL	BL	BL	34208	PBB&PBDE:N.D	---	PASS
40	BL	BL	BL	BL	BL	---	---	PASS
41	BL	BL	BL	BL	N.A	---	---	PASS
42	BL	BL	BL	BL	BL	---	---	PASS
43	BL	BL	BL	BL	N.A	---	---	PASS
44	BL	BL	BL	BL	BL	---	---	PASS



TEST REPORT

Page 8 of 13

REPORT No.:CTB230111014CX

45	BL	BL	BL	BL	N.A	---	---	PASS
46	BL	BL	BL	BL	BL	---	---	PASS
47	BL	BL	BL	BL	BL	---	---	PASS
48	BL	BL	BL	BL	BL	---	---	PASS
49	BL	BL	BL	BL	BL	---	---	PASS
50	BL	BL	BL	BL	N.A	---	---	PASS
51	BL	BL	BL	BL	BL	---	---	PASS
52	BL	BL	BL	BL	N.A	---	---	PASS
53	BL	BL	BL	BL	4801	PBB&PBDE:N.D	---	PASS
54	BL	BL	BL	BL	N.A	---	---	PASS
55	BL	BL	BL	BL	BL	---	---	PASS
56	BL	BL	BL	BL	BL	---	---	PASS
57	BL	BL	BL	BL	BL	---	---	PASS
58	BL	BL	BL	BL	BL	---	---	PASS
59	BL	BL	BL	BL	N.A	---	---	PASS
60	BL	BL	BL	BL	BL	---	---	PASS
61	BL	BL	BL	BL	BL	---	---	PASS
62	BL	BL	BL	BL	BL	---	---	PASS
63	BL	BL	BL	BL	BL	---	---	PASS
64	BL	BL	BL	BL	N.A	---	---	PASS
65	BL	BL	BL	BL	BL	---	---	PASS
66	BL	BL	BL	BL	BL	---	---	PASS
67	BL	BL	BL	BL	BL	---	---	PASS
68	BL	BL	BL	BL	N.A	---	---	PASS
69	BL	BL	BL	BL	BL	---	---	PASS
70	BL	BL	BL	BL	BL	---	---	PASS
71	BL	BL	BL	BL	BL	---	---	PASS

TEST REPORT

72	BL	BL	BL	BL	BL	---	---	PASS
73	BL	BL	BL	BL	BL	---	---	PASS
74	BL	BL	BL	BL	BL	---	---	PASS
75	BL	BL	BL	BL	N.A	---	---	PASS
76	BL	BL	BL	BL	BL	---	---	PASS
77	BL	BL	BL	BL	N.A	---	---	PASS
78	BL	BL	BL	BL	BL	---	---	PASS
79	BL	BL	BL	BL	3333	PBB&PBDE:N.D	---	PASS
80	BL	BL	BL	BL	7715	PBB&PBDE:N.D	---	PASS
81	BL	BL	BL	BL	BL	---	---	PASS
82	BL	BL	BL	BL	BL	---	---	PASS

Test Item(s)	Dibutyl Phthalate (DBP) (mg/kg)	Benzylbutyl Phthalate (BBP) (mg/kg)	Bis-(2-ethylhexyl) Phthalate (DEHP) (mg/kg)	Diisobutyl phthalate (DIBP) (mg/kg)	Conclusion
CAS No.	84-74-2	85-68-7	117-81-7	84-69-5	
Limit	1000	1000	1000	1000	
No.	Result (mg/kg)				
1+2+3	N.D	N.D	N.D	N.D	PASS
4+6+7	N.D	N.D	N.D	N.D	PASS
5+14+15	N.D	N.D	N.D	N.D	PASS
17+20+51	N.D	N.D	N.D	N.D	PASS
26+27+36	103	N.D	N.D	N.D	PASS
40	56	N.D	N.D	N.D	PASS
67+69+70	267	N.D	N.D	N.D	PASS
71+72	269	N.D	N.D	N.D	PASS
73+78	N.D	N.D	N.D	N.D	PASS
37+48+49	N.D	N.D	N.D	N.D	PASS



TEST REPORT

Page 10 of 13

REPORT No.:CTB230111014CX

18+21+22	N.D	N.D	N.D	N.D	PASS
23+24+25	N.D	N.D	N.D	N.D	PASS
32+38	N.D	N.D	N.D	N.D	PASS
42+47+51	N.D	N.D	N.D	N.D	PASS
55+60+61	N.D	N.D	N.D	N.D	PASS
62+63+65	N.D	N.D	N.D	N.D	PASS
42+47+51	N.D	N.D	N.D	N.D	PASS
55+60+61	N.D	N.D	N.D	N.D	PASS
62+63+65	N.D	N.D	N.D	N.D	PASS

Remark:

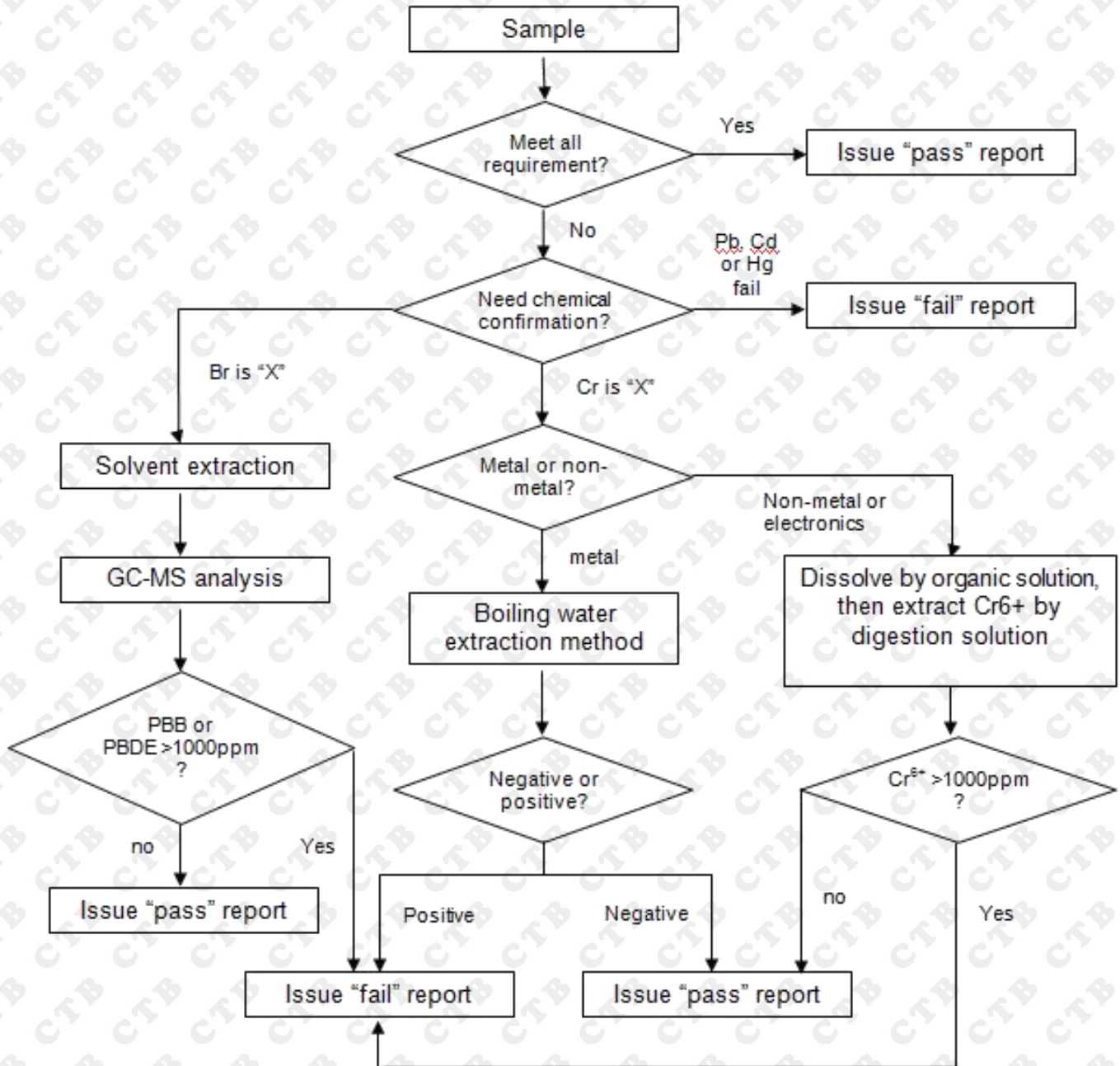
1. BL = below the limit
2. OL = over the limit
3. X = inconclusive, chemical confirm test is needed
4. NA = metal not applicable
5. mg/kg = milligram per kilogram = ppm
6. N.D = not detected
7. Negative = Absence of Cr(VI), the detected Cr(VI) concentration in the boiling water extraction solution is less than $0.1\mu\text{g}/\text{cm}^2$ with 50cm^2 sample surface area used.
8. Positive = Presence of Cr(VI), the detected Cr(VI) concentration in the boiling water extraction solution is equal to or greater than $0.13\mu\text{g}/\text{cm}^2$ with 50cm^2
9. sample surface area used. The limit for composite test should be divided by the mixed number.

Note:

1. When perform screening tests, it is the result on total Br while test item on restricted substances is PBBs/PBDEs, it is the result on total Cr while test item on restricted substances is Cr^{6+} .
2. Pb, Cd, Hg, Cr and Br results are obtained by EDXRF for primary screening, and further chemical testing by ICP-OES (for Cd, Pb, Hg), UV-VIS (for Cr^{6+}) and GC-MS (for PBBs, PBDEs) is needed to be performed, if the concentration falls into the inconclusive area according to IEC 62321-3-1:2013.
3. For the XRF screening test for RoHS elements, the reading may be different to the actual content in the sample be of non-uniformity composition.
4. # the lead content of tested component exceeded 1000ppm, but less than 40000ppm, it can comply with the RoHS directive, as it is exempted to contain lead with up to 40000ppm according to item 6(c) of annex III of 2011/65/EU, as per applicant's declaration.

Test flow chart

1. Pb/Cd/Hg/Cr⁶⁺/PBBs/PBDEs



2. Phthalate test flow chart

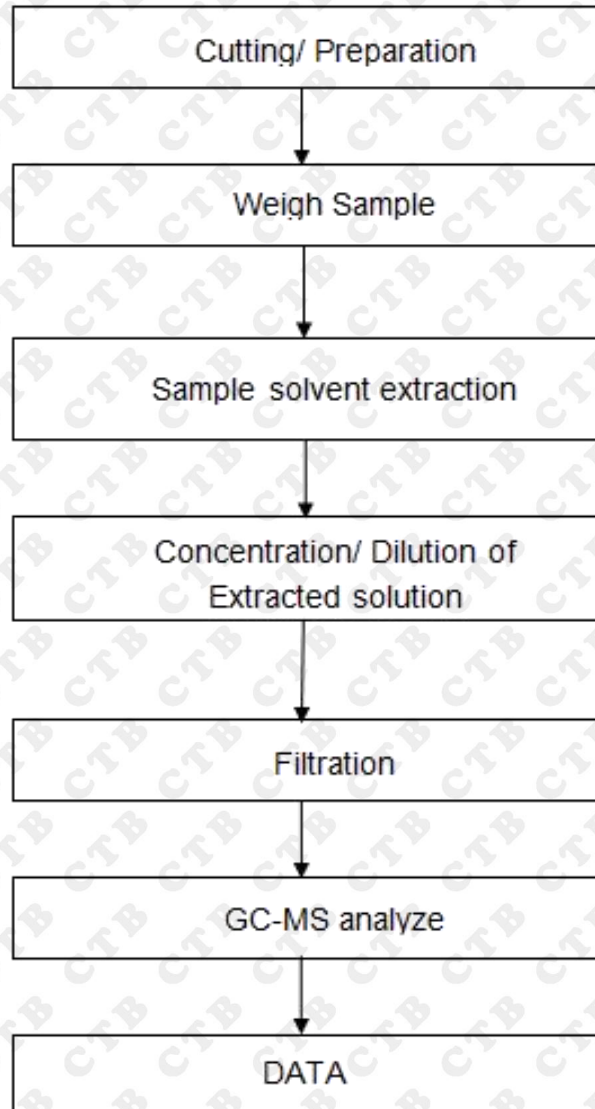
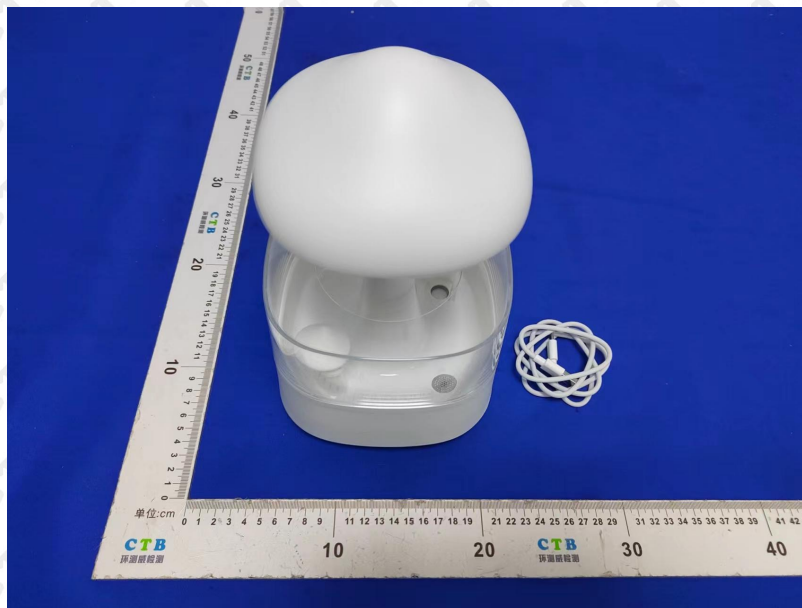


Photo documentation



*** End of Report ***

Note: If there is any objection to the inspection results in this report, please submit a written report to the company within 15 days from the date of receiving the report. The test report is effective only with both signature and specialized stamp. This result(s) shown in this report refer only to the sample(s) tested. Without written approval of Shenzhen CTB Testing Technology Co., Ltd. this report can't be reproduced except in full. The tested sample(s) and the sample information are provided by the client. “*” indicates the testing items were fulfilled by subcontracted lab. “#” indicates the items are not in CNAS accreditation scope.