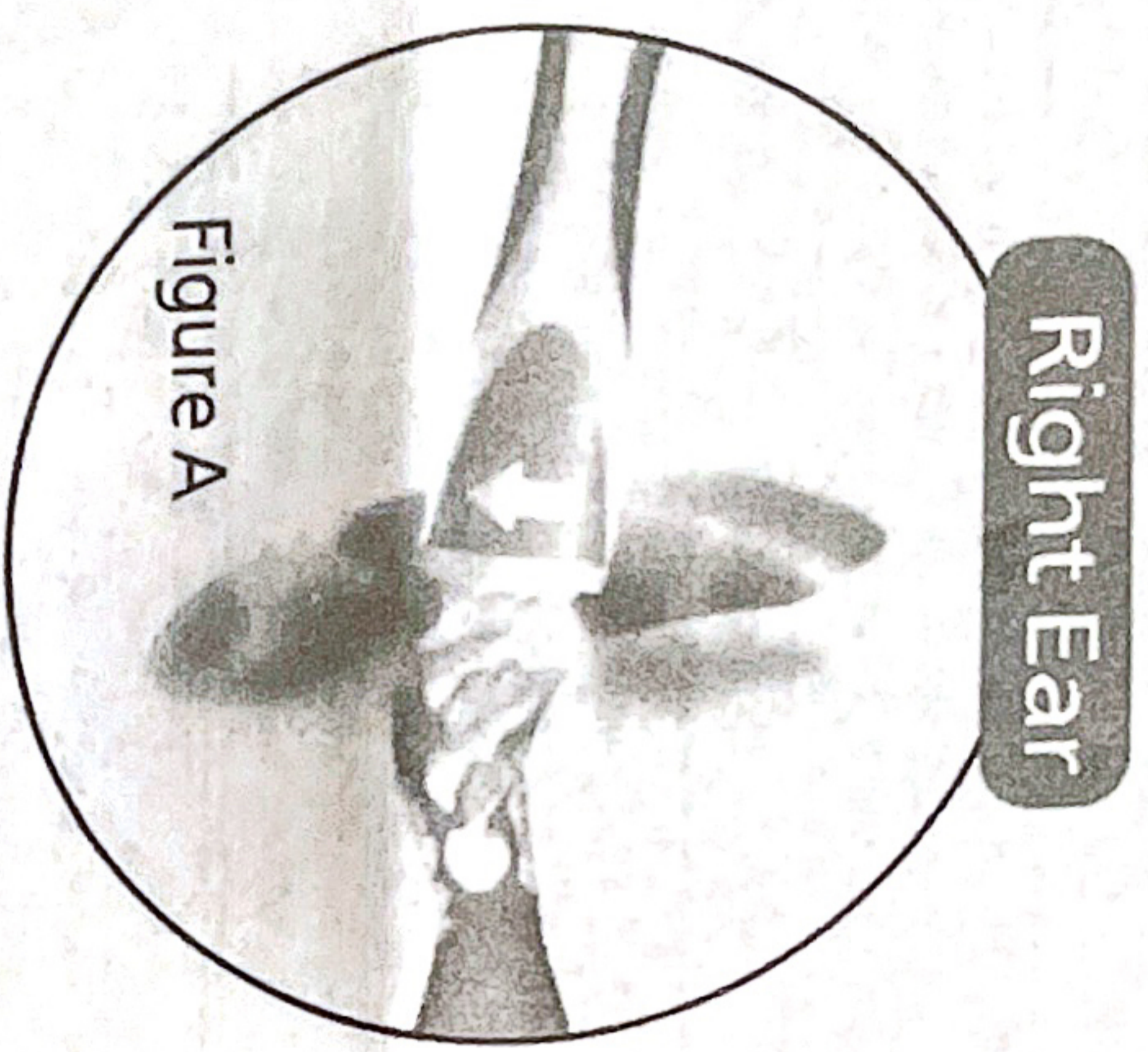


Instructions For Use

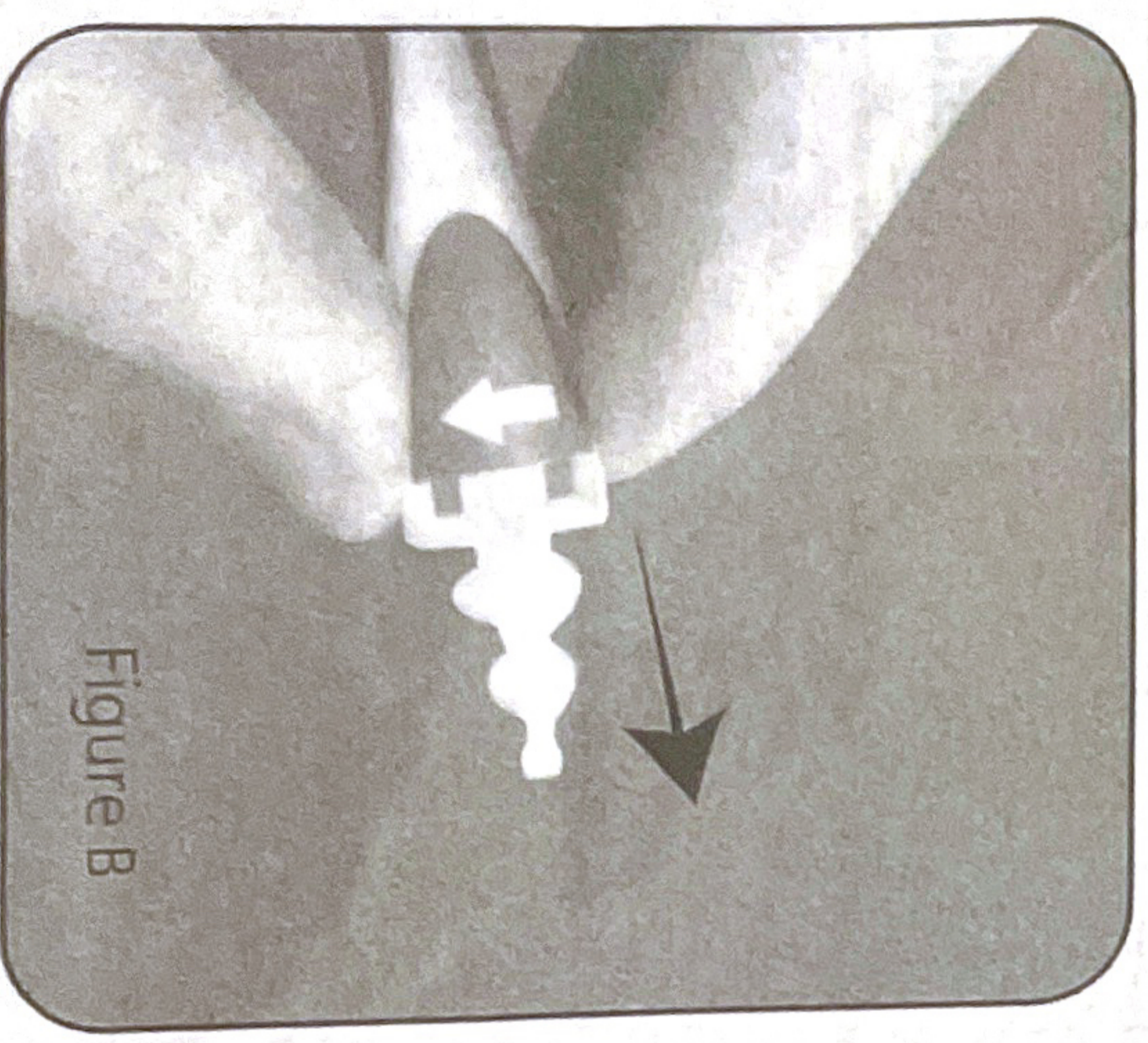
Right Ear Cleaning

1. Remove Find Back handle (preloaded with ear tip) from the case.
 - Carefully and gently insert tip into right ear. Do not force tip too far into ear canal.
 - Twist in direction of arrow on handle to collect ear wax. Do not twist in the other direction. (Figure A)
 - To avoid injury, do not use while moving.



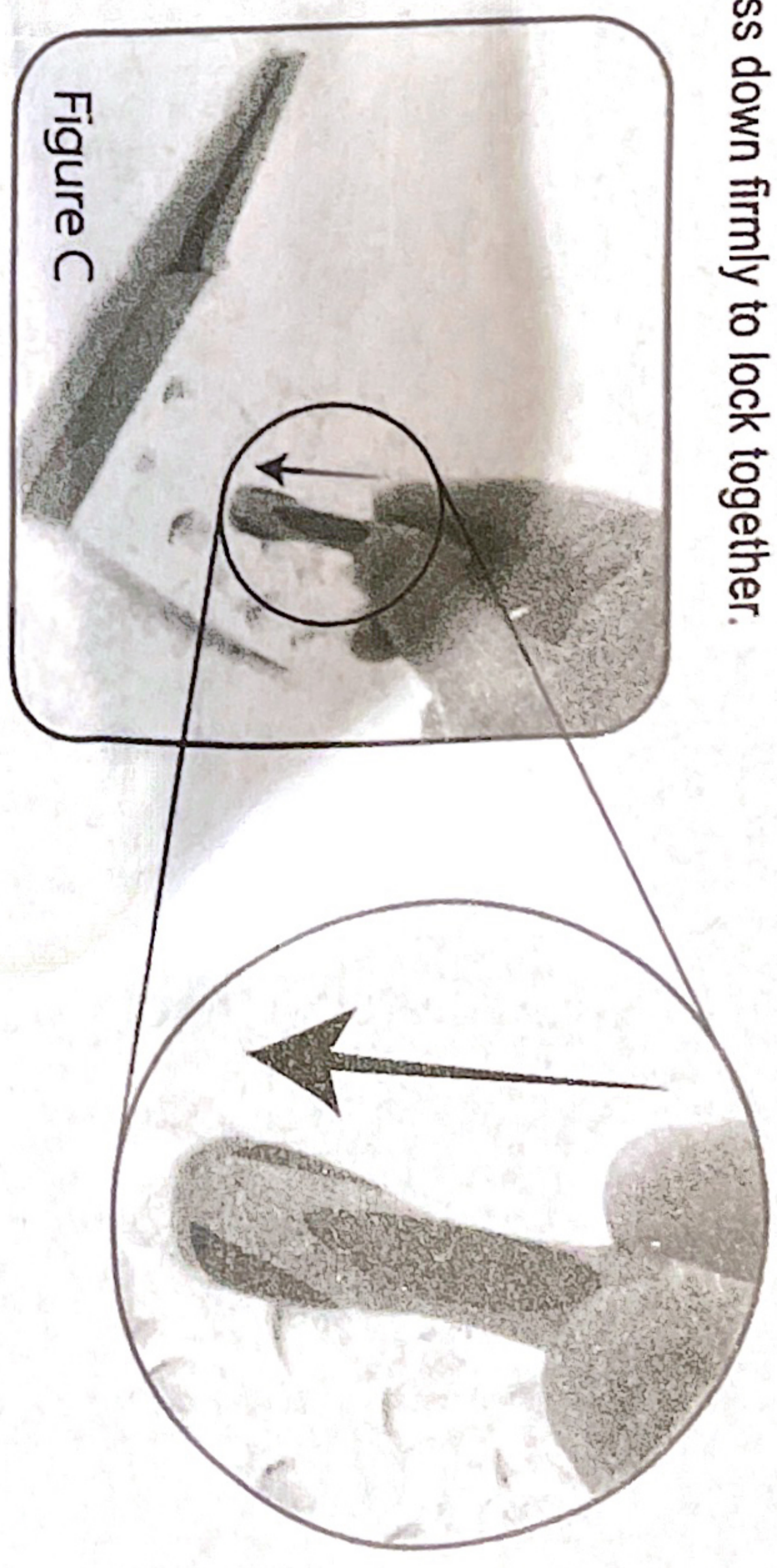
Ear Tip Removal

2. Press on both sides of tip and push forward until it is released. (Figure B)
- Eject tip into any household waste container. Do not flush down toilet.



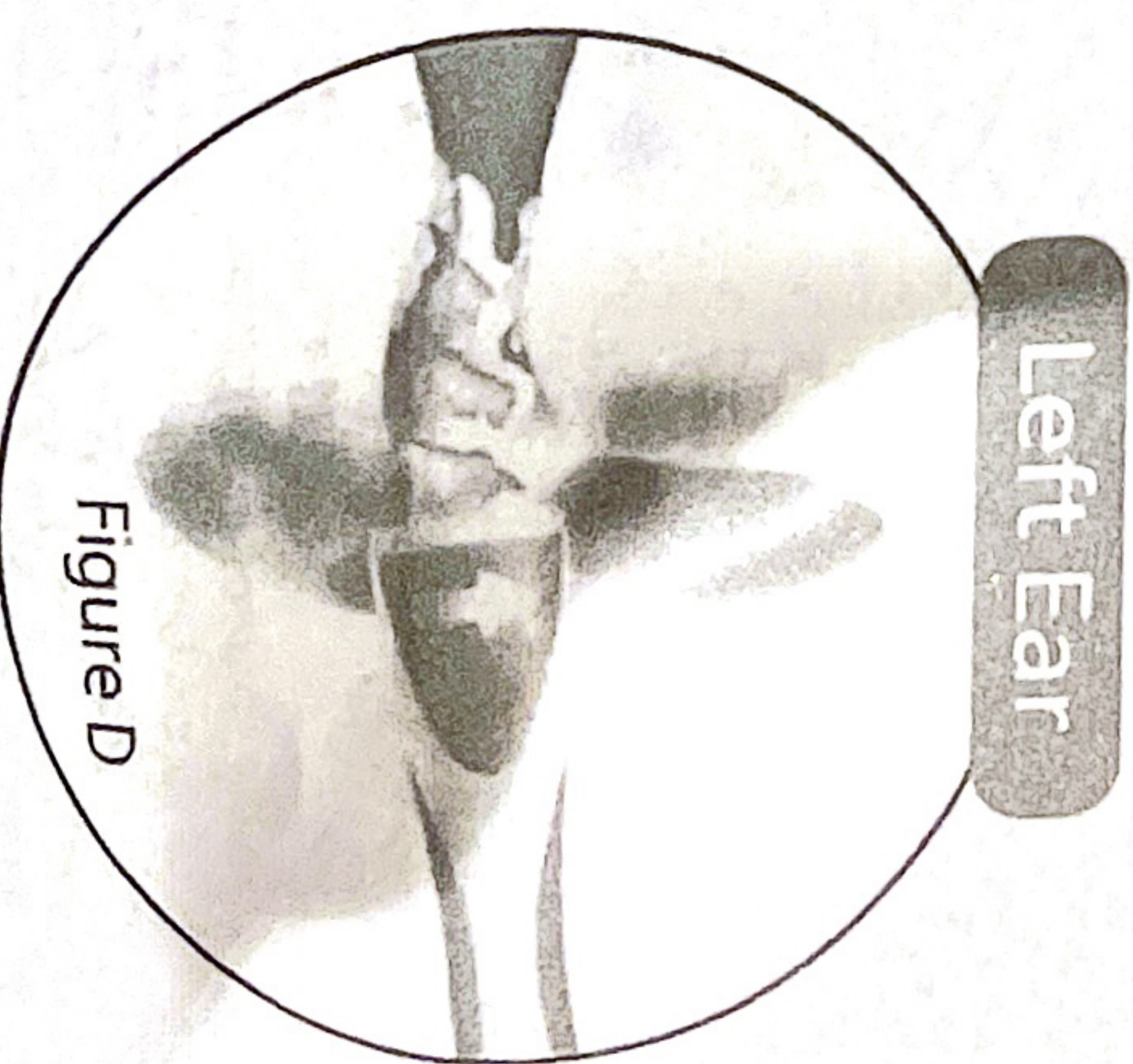
Ear Tip Installation

3. Additional tips are included in the protective case.
 - To load tip onto handle, line up slots on tip with grooves on handle.
 - Press down firmly to lock together.



Left Ear Cleaning

4. Carefully and gently insert tip into left ear. Do not force tip too far into ear canal.
 - Twist in direction of arrow on handle (reverse of right ear direction) to collect ear wax. Do not twist in other direction.
 - To avoid injury, do not use while moving.
 - Store handle in the protective case when not in use.



⚠ WARNING

This product should not be used on children under the age of 12. This product should not be used on individuals with ear tubes. Do not use if you experience pain, discomfort, hearing loss, pressure, or bleeding.

⚠ WARNING

Find back should NOT be used in the following situations without a Physician's supervision:

- Individuals suffering from Meniere's Syndrome or experiencing any form of dizziness, vertigo, hardness of hearing or other ear problems
- Individuals with ear infections
- Individuals with tubes in their ears
- Individuals who have had mastoid surgery
- Individuals with current or previously perforated ear drums

⚠ CAUTION

Please do not REUSE or wash spiral tips. These tips are good for one-time use only (one per ear canal). Reusing the tips may cause infection or ear damage. If you wish, you may clean the find back handle with warm soapy water and dry thoroughly before storing.

⚠ CAUTION

DO NOT POKE, JAB, OR FORCE FIND BACK INTO YOUR EAR. THIS PRODUCT IS NOT FOR DEEP EAR CANAL INSERTION. EAR WAX IS PRODUCED NEAR THE ENTRANCE OF THE EAR CANAL, KNOWN AS THE "OUTER EAR CANAL". IMPACTED EAR WAX SHOULD BE REMOVED BY A HEALTH CARE PROFESSIONAL. TURN ONLY IN DIRECTION INDICATED BY HANDLE OR ELSE SERIOUS INJURY MAY RESULT

Please Read All Instructions Thoroughly Before Use

Before use, please note the arrows on the Find Back Handle. These arrows indicate the direction in which the handle should be turned. The handle should not be spun in the opposite direction or twisted back and forth. If the handle is used improperly it could cause serious injury.

LIMITATION OF LIABILITY

Liability limited to the purchase price of this product. Telebrands Corp. shall not be liable for any incidental or consequential damages or any implied warranty on this product. Some states do not allow the exclusion or limitation of incidental or consequential damages, so the above limitation or exclusion may not apply to you.

MADE IN CHINA

