

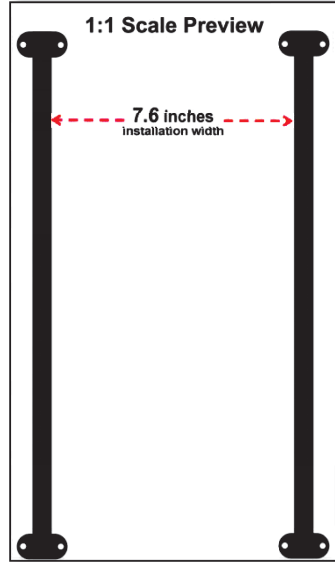
# 1:1 Scale Preview

7.6 inches  
installation width

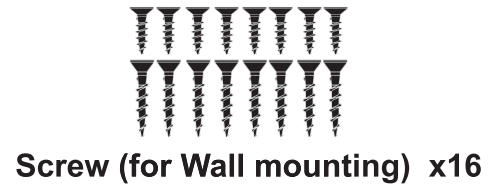
## Item Include



Towel Rack Set



1:1 Scale Preview



Screw (for Wall mounting) x16

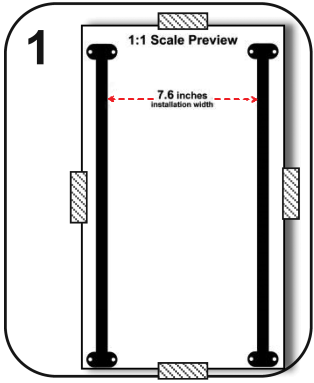


Expansion tube x 8

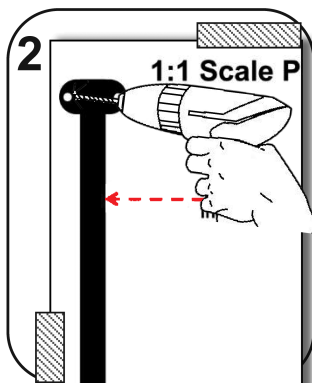


Auxiliary stickers x 4

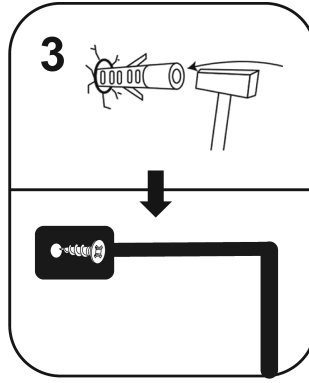
Installation package



1. Use the auxiliary sticker to paste on the **1:1 Scale Preview** to the wall you want to install.



2. Punch holes at the punched positions on the **1:1 Scale Preview**.  
(A total of 8 holes)



3. Remove the **1:1 Scale Preview** and put the expansion tubes into the holes. Install the towel rack with screws.



4. Place the board at the corresponding position at the top of the towel rack, and then install it with screws.

Thank you

Thank you so much for your order. You made our day.  
We hope you have a lovely day and see you again soon!

vonía