

CAUTION

Please read carefully since it contains important information.

- Ride-on operation should be under adults' supervision.
- This product should be assembled by adult.
- It is prohibited to run this ride-on in public streets, roads, slope, near swimming pool, or any other dangerous area.
- This ride-on can not be overloaded. The maximum loading capacity is 20 kilograms.
- It shall be used by one child only at each time.
- This ride-on is for children aged between 18-36 months.
- Some accessories of ride-on may be damaged by improper operation.
- This product is made of plastics. Please keep it away from fire.
- Do not let children touch wheels in case being trapped or crushed. Please keep other children away from the ride-on during running.
- Flat ground is good for ride-on running. Please avoid running on sand or any other rough ground.
- The package of ride-on is not toy for children.
- Adults are required to read this instruction carefully and give correct guideline to children before playing.
- The toy shall be used with caution, since skill is required to avoid falls or collisions causing injury to the user or third parties.



WARNING:

- 1.This toy is unsuitable for children under 18 months.
- 2.The product should be used under the supervision of adults.
- 3.Don't run in the dangerous place or in the street or on the muddy ground.
- 4.Loading capacity of weight is 20kgs.

The packaging has to be kept since it contains important information.

Porsche, the Porsche shield and the distinctive design of Porsche cars are trademarks and trade dress of Porsche AG. Permission granted.

Licensee: RASTAR GROUP

Manufacturer: RASTAR GROUP

Add: Xinghui Industrial Park,Xiadao Road,
Shanghua,Chenghai,Shantou,GuangDong,China.

Http://www.rastar.com

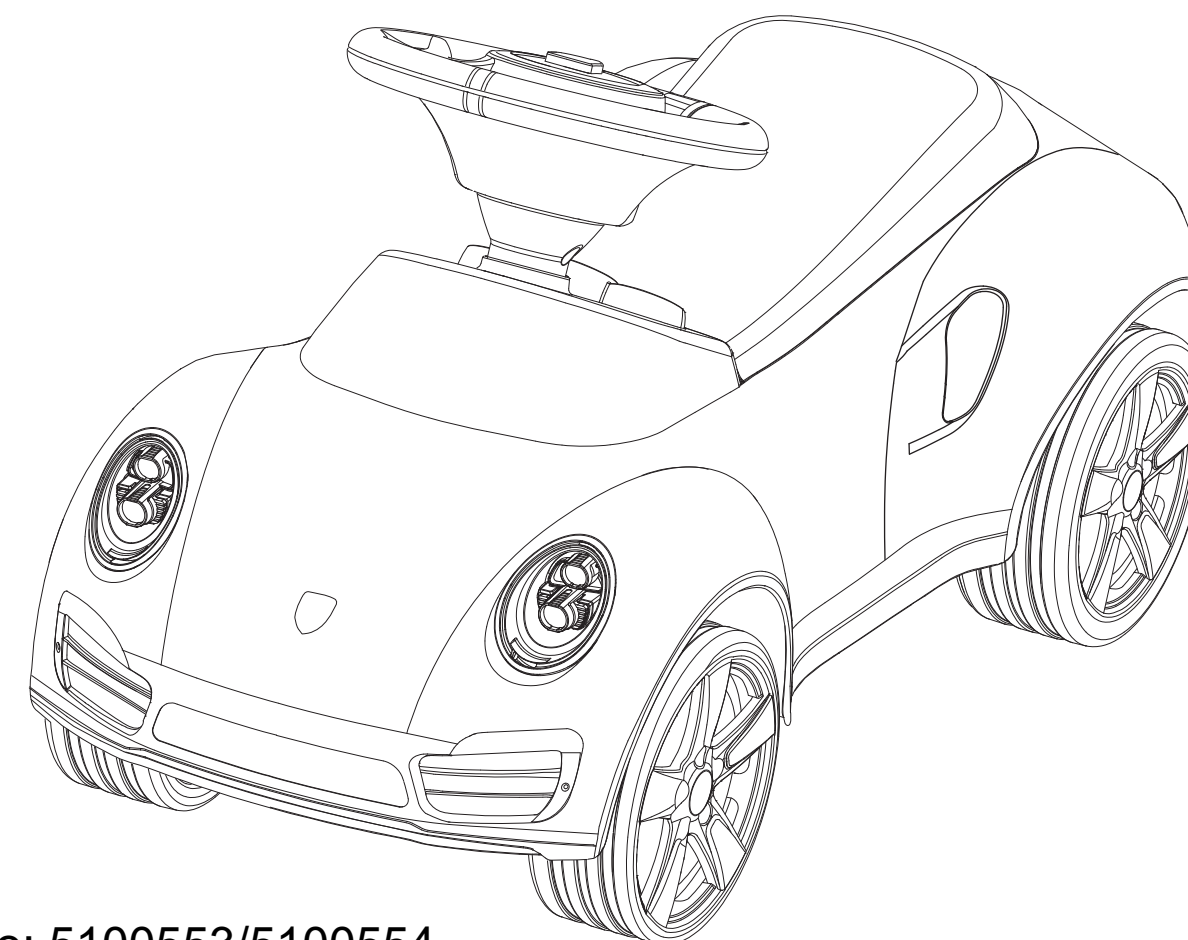


01. 04. 83400. 00104



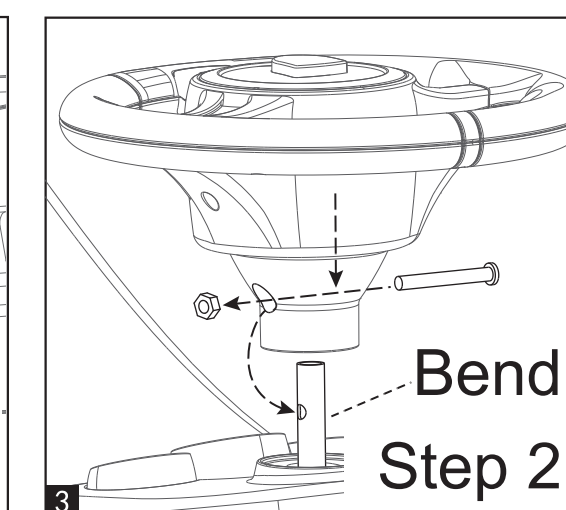
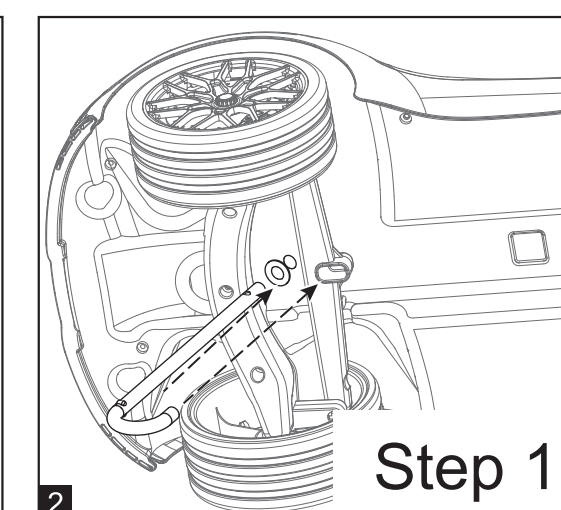
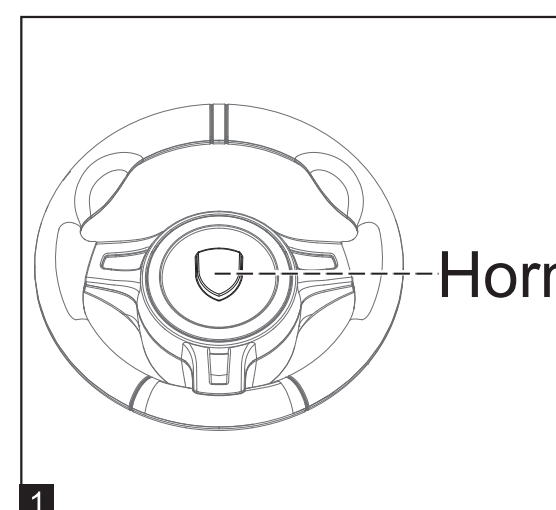
INSTRUCTIONS

This manual is applicable to following type of product : 83400



Article No: 5100553/5100554

ASSEMBLY



- **Step 1:** Put the gasket into steering elbow pipe, and insert the steering elbow pipe from the bottom of the car, then hook the steering elbow pipe to groove of steering linkage. Please refer to Figure 2.
- **Step 2:** Install the steering wheel onto steering elbow pipe and tighten it with bolts and hex nuts. Please refer to Figure 3.

CLEANING INSTRUCTION

- Swab ride-on with cloth so as not to damage the parts, do not flush the ride-on with water.