

Instruction Manual

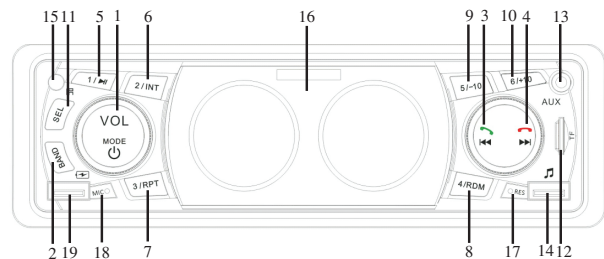
BT MP3 & FM Receiver

SWM 8808
Instruction Manual



1

OPERATION MANUAL



LOCATION OF CONTROL

1. **⏻/MODE/VOL:** Power ON/OFF & Function Selector & Volume Control
2. **BAND:** BAND Button (FM1-FM2-FM3) & AMS Button Auto Seek Search Tuning
3. **⏮:** Track Skip/ Search Backward, Manual Auto Search Radio & Answer the Phone
4. **⏭:** Track Skip/ Search Forward, Manual Auto Search Radio & Hang Up the Phone
5. 1: Memory Station 1 for Radio and Play/pause Function for MP3/WMA
6. 2: Memory Station 2 for Radio and Intro Function for MP3/WMA
7. 3: Memory Station 3 for Radio and Repeat Function for MP3/WMA
8. 4: Memory Station 4 for Radio and Random Function for MP3/WMA
9. 5: Memory Station 5 for Radio and -10 Function for MP3/WMA
10. 6: Memory Station 6 for Radio and +10 Function for MP3/WMA
11. **SEL:** Select Control & Clock Button
12. **SD:** SD Card Slot
13. **AUX:** Aux In Jack
14. **USB:** USB Connector
15. **IR:** Remote control receiver window
16. **LCD Display**
17. **RES:** MCU Reset
18. **MIC**
19. **Phone Charge Interface**

2

INSTRUCTION MANUAL

Please read this instruction manual carefully and familiarize yourself with your new car-Radio before using it for the first time. Please retain this manual for future reference.

FEATURES

The Unit Features FM Stereo with USB&SD Port and :

- Electronic PLL Tuning Control with 18 Memory Stations
- MP3/WMA Files Reader
- Preamplified Line-out
- Front Audio Aux-in
- USB Port and SD Card Input
- Last Track Memory (RADIO & SD & USB & BT)

OPERATING INSTRUCTIONS

1. **POWER ON/OFF and FUNCTION SELECTOR and VOLUME CONTROL**
Short press turn on, long press three seconds turn off.
When the system turn on, push this button repeatedly and the LCD will display the following sequence: RADIO → USB → SD → AUX → BT.
Rotate the volume knob to control the volume.
2. **BAND BUTTON and AMS BUTTON**
In radio mode, short press is toggled cyclically by pressing the key FM1-FM2-FM3.
Long press to automatically save the station.
In playback mode, short press is call ID3 display. long press is choose the song.
3. **⏮ BUTTON**
In MP3 player mode, press the button during playback to go to the previous track;
In radio mode, press to search to the desired radio station.
In bluetooth mode, short press to answer the phone.
4. **⏭ BUTTON**
In MP3 player mode, press the button during playback to go to the next track;
In radio mode, press to search to the desired radio station.
In bluetooth mode, short press to hang up the phone.
5. **1/▶ BUTTON**
Memory station 1 for radio control, the playback mode of your music coming through the usb or sd/mmc external device by pressing once to start playback. During "play" repress the button to pause playback. Press the button once more to resume play.
6. **2/INT BUTTON**
Memory station 2 for radio control, the playback mode this button is pressed, 'INT' indication is displayed and the first several seconds of each track is played. Press again to stop intro and listen to track.

3

OPERATING INSTRUCTIONS

7. **3/RPT BUTTON**
Memory station 3 for radio control, the playback mode this button is pressed, 'RPT' indication is displayed and the selected track will be continually repeated until the track repeat mode is cancelled by pressing the 'RPT' button again.
8. **4/RDM BUTTON**
Memory station 4 for radio control, the playback mode this button is pressed, 'RDM' indication is displayed and the tracks are played in random instead of normal progression. To cancel random mode, press the 'RDM' button again.
9. **5/-10 BUTTON**
Memory station 5 for radio control, the playback mode, short press to -10, long press to choose a folder.
10. **6/+10 BUTTON**
Memory station 6 for radio control, the playback mode, short press to +10, long press to choose a folder.
11. **SELECT CONTROL & CLOCK BUTTON**
Press the select button shortly until the desired function is shown on the display.
* volume (rotate knob) → select (push down) → bas → tre → bal → fad → loud → EQ (eq off-pop-classic-rock)
Long press will display the clock in LCD. long press again this button, clock will beat display, this time with the VOLUME BUTTON setup the clock.
12. **SD CARD SLOT**
Insert the SD card in the slot by pushing it gently inward. Select SD with the mode selector. The music starts to play automatically.
* Support music file format: MP3, WMA .
13. **AUX IN JACK**
Insert your portable player into the jack, in any playing mode, audio will come through the car speaker.
14. **USB Connector**
Use a usb cable (not included) if necessary, to connect your portable mp3 player.
15. **IR**
Remote control receiver window.
16. **LCD Display**
The LCD display show the actual reception and function.
17. **MCU Reset**
The function of this button is reset the system.
18. **MIC**
Bluetooth mode, Hands-free calls are used.
19. **Phone Charge Interface**
The USB interface can continue to output large current 5V voltage, you can give mobile phone charge.

4

WARNING

Use the specified amperage fuse for each lead. Use of a higher amperage fuse may cause serious damage.

Correct Disposal of This Product (Waste Electrical & Electronic Equipment)



This marking shown on the product or its literature indicates that it should not be disposed with other household wastes at the end of its working life. To prevent possible harm to the environment or human health from uncontrolled waste disposal, please separate this from other types of wastes and recycle it responsibly to promote the sustainable reuse of material resources.

Household users should contact either the retailer where they purchased this product, or their local government office, for details of where and how they can take this item for environmentally safe recycling. Business users should contact their supplier and check the terms and with other commercial wastes for disposal.

SPECIFICATIONS

FM TUNER

Frequency Range	87.5~107.9MHz
Sensitivity	12dB μ V
I.F. Frequency	10.7MHz
Frequency Response	40Hz~15KHz(\pm 3dB)
Stereo Separation	>28dB
S/N Ratio	>50dB

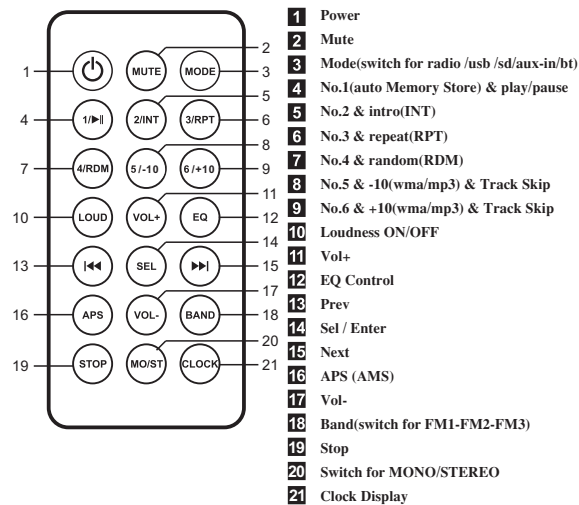
GENERAL

Power Supply Voltage	12V DC, Negative Ground
Max Current Consumption	15A

Note: specifications and the design are subject to possible modification without notice due to improvement.

5

REMOTE CONTROL DESCRIPTION



MAINTENANCE

Fuse Replacement

If the fuse blows, Check the power connection and replace the fuse. If the fuse blows again after the replacement, There may be an internal malfunction. In this case, Consult your nearest repairing center.

6

INSTALLATION

- Remove the stereo carefully from the box, retaining the packaging for future use (Servicing)

PRECAUTIONS

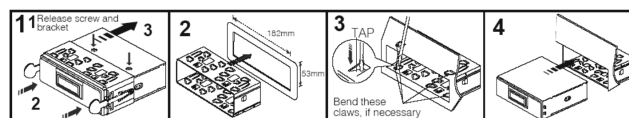
- Choose the mounting location carefully so that the unit will not interfere with the normal driving functions of the driver.
- Avoid installing the unit where it would be subject to high temperatures, such as from direct sunlight or hot air from the heater, or where it would be subject to dust, dirt or excessive vibration.
- Use only the supplied mounting hardware for a safe and secure installation.

MOUNTING ANGLE ADJUSTMENT

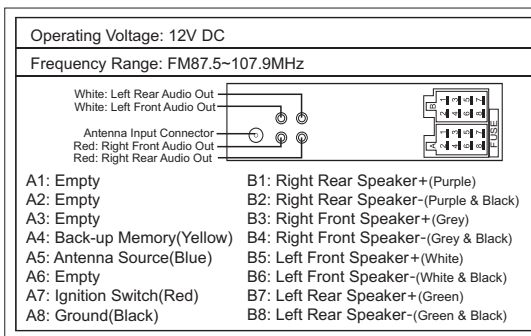
- Adjust the mounting angle as desired.

MOUNTING EXAMPLE

Installation In the dashboard



Note: Keep the release Key in the safe place as you may need it in future to remove the unit from the car.



7

TROUBLE SHOOTING

We care every customer's experience in using our product, so we tested every device and make sure that they can really work well before we ship it out.

- Car radio does not turned on, or car radio does not turn on after using for a while.
 - Make sure the Red cable is with ignition positive, Yellow cable with Battery Positive(12V+), Black cable with Battery Negative(12V-). Please use the radio in 12V output vehicle. We DO NOT recommend you using voltage adapter to power up the radio.
 - If the radio is still off after you confirm all the wires are wired correctly, please try to joint the yellow and red cable together and wire it with the 12V positive.
 - After the two steps, if the radio isn't on. Please check if the fuse is burned or not.
- Car radio can turn on, but there is no sound, or sound disappear after you play the radio for a while. (it can play USB Flash or SD card, just no sound).

Notice: There are two main reason that would cause "no sound".

- Speaker negative cable is grounded.
 - The amplifier chip is burned when the item is shorted in wiring.
- Please check if your speaker cable is shorted or not, please make sure very one of them is isolated wired.
 - If you confirm that the wire is correctly wired, you can find a speaker elsewhere to do an extra test, which could easily confirm the problem is from the radio or your car's system.
 - Car radio's Bluetooth is not working, or it work for a while then disconnect itself.
 - Try to "forget" the device first, and then search for Bluetooth signal again, you may need to input the PIN code which should be "0000".
 - If the last step can't make the Bluetooth back, try to find the "reset hole" on the front panel and do the reset for a try. If it's convenient enough, you can also try to unhook the power connector behind for a few minutes and replug it in later.
 - Car radio's mic is not working, phone call from the other side can't hear clearly.
 - Try to check if the Bluetooth volume setting.
 - Try to check if the dashboard is too low(the MIC is too far for you) for the radio's MIC to collect your voice.

- Car radio cannot read your USB flash disk or SD/TF card.

Please confirm what's the capacity of the USB flash disk or SD memory card. It can read lower than 32 GB disk normally. Please use the other flash disks with fewer songs to test again. (please confirm if you insert the SD/TF card in a correct side)
 - Car radio's remote control does not work.

Please check if the remote have the correct battery inside, the correct model is CR2025 model.
- Car radio noise problem.
 - For some cars, there might be some noise generated in the playing. Especially when you are using amplifier. Usually, this kind of problem is related with interference. Please make sure all the cables are wrapped well in case of any contact with each other.
 - You can find a speaker elsewhere to do an extra test, which could easily confirm the problem is from the radio or your car's system.
 - Car radio cannot save the time or radio station setting.

Check if the Yellow cable is wired with your car's battery 12V+ (constant positive)or not, it provide constant power to the unit and save the setting.

*Please try to contact us once you finish the steps listed on above, we promise that we will give you solution for your problems. Please do not open dispute or return request when you can't make the radio work or find some place unsatisfied. We can guarantee that we will provide proper advice or solution for you as soon as we know the situation. Some photo or video illustration will help us resolve your problem more quickly. *

8