

[Skip to content](#)

Manuals+

User Manuals Simplified.



Tp-Link TL-POE150S PoE Injector User Guide

July 12, 2022 July 13, 2022 [Leave a comment on Tp-Link TL-POE150S PoE Injector User Guide](#)

[Home](#) » [tp-link](#) » [Tp-Link TL-POE150S PoE Injector User Guide](#) 📄

Contents [hide](#)

[1 TP-Link TL-POE150S PoE Injector and PoE Splitter User Guide](#)

[1.1 PoE Injector Only](#)

[1.2 PoE Splitter Only](#)

[1.3 PoE Injector & Splitter](#)

[1.4 Power LED Explanation](#)

[1.5 FAQ](#)

[1.6 Specifications](#)

[1.7 Safety Information](#)

[1.8 EU Declaration of Conformity](#)

[1.9 UK Declaration of Conformity](#)


[2 Documents / Resources](#)

[2.1 References](#)

[2.2 Related Manuals / Resources](#)


TP-Link TL-POE150S PoE Injector and PoE Splitter User Guide



 To ask questions, find answers, and communicate with TP-Link users or engineers, please visit <https://community.tp-link.com> to join TP-Link Community.



 For technical support and other information, please visit <https://www.tp-link.com/support>, or simply scan the QR code.

 If you have any suggestions or needs on the product guides, welcome to email techwriter@tp-link.com.cn.

© 2022 TP-Link 7106509689 REV5.2.1

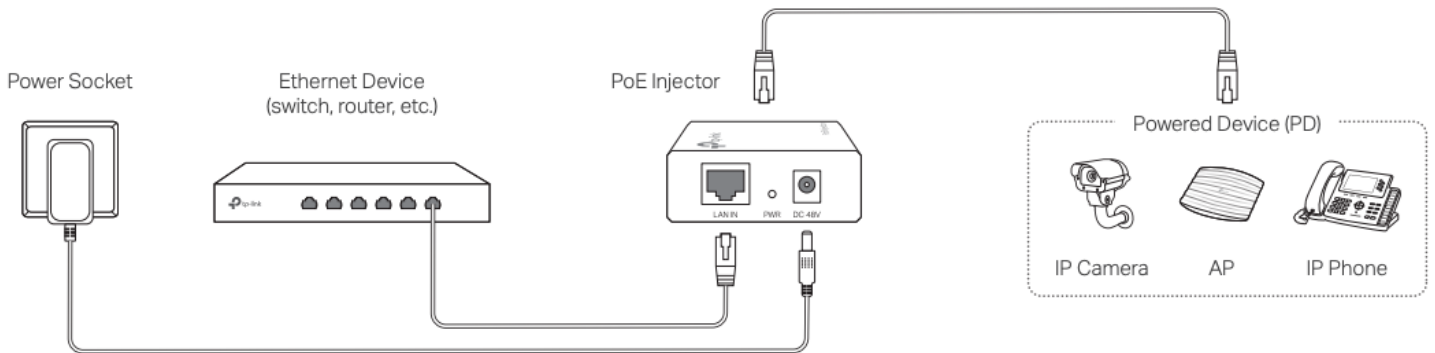
Some models featured in this guide may be unavailable in your country or region. For local sales information, visit <https://www.tp->

link.com.

For simplicity, we will take TL-POE150S and TL-POE10R for example throughout the Guide, other models may differ in appearance.

PoE Injector Only

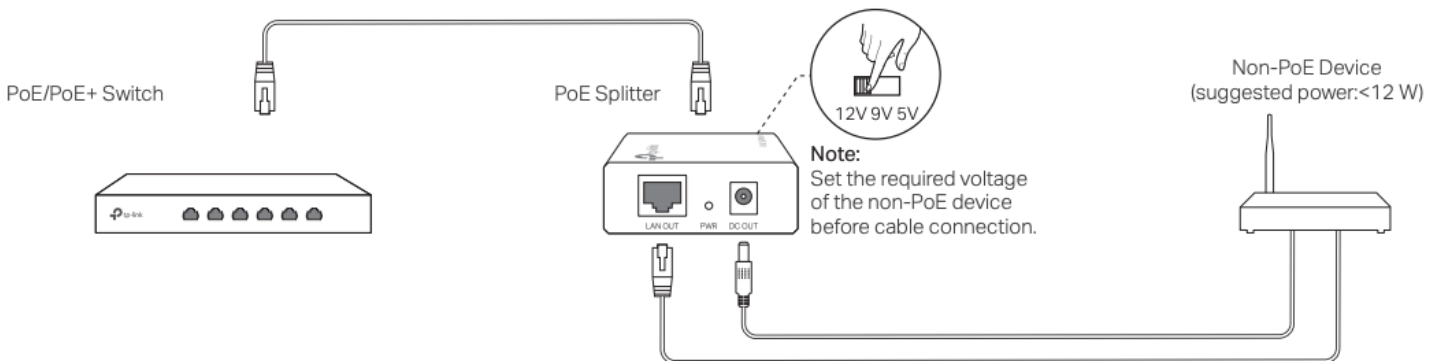
The PoE Injector supplies steady power and data connectivity to a powered device such as PoE IP Camera, PoE AP and PoE IP Phone through an Ethernet cable.



Note: The maximum output power of TL-POE150S is 15.4W. PoE devices that require more than 15.4W are not supported.

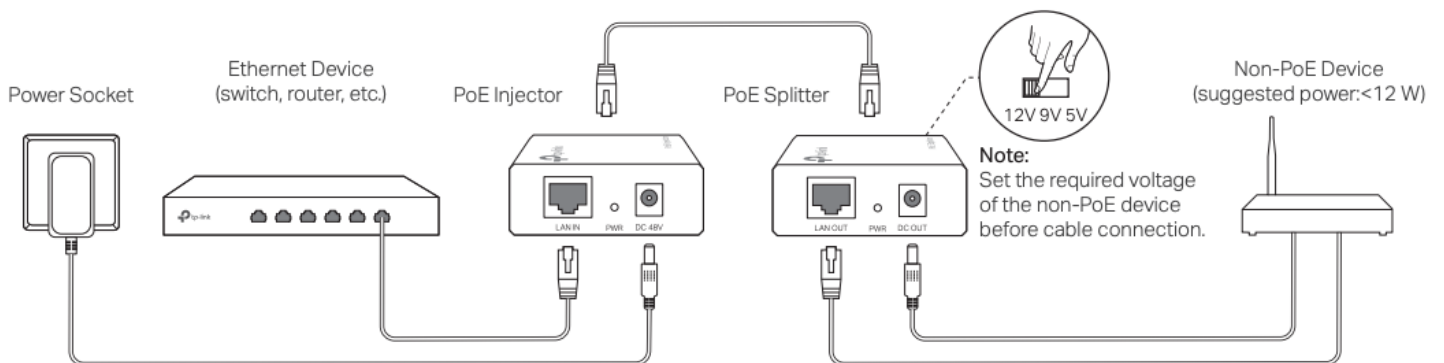
PoE Splitter Only

The PoE Splitter can be used with a PoE/PoE+ switch to deliver direct current (DC) power and data to a Non-PoE device.



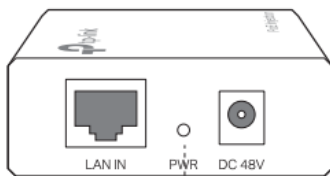
PoE Injector & Splitter

The PoE injector and PoE splitter can be used as a kit to supply power and transmit data to a Non-PoE device.



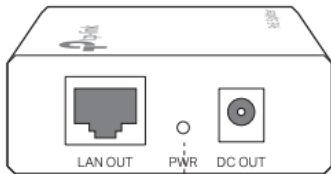
Power LED Explanation

PoE Injector:



On: Supplying power normally
 Off: No power supply

PoE Splitter:



On: Connected to PSE correctly
 Off: No PSE is connected

FAQ

Q1. Can the PoE injector supply power to a PoE device which doesn't have a gigabit PoE port?

A: Yes. All RJ45 ports of the PoE injector support 10/100/1000 Mbps auto-negotiation.

Q2. What can I do if my PoE injector doesn't supply power to the powered device or the supplied power is unstable?

A1: Ensure the PD is PoE-compliant and its connecting port supports the PoE function.

A2: Ensure the power consumption of the PD doesn't exceed 15.4 W, otherwise the overload protection of the PoE injector will be activated. The quality and length of the Ethernet cable may influence the reception of the power supply

Q3. Must I use the PoE injector together with the PoE splitter?

A: No. The PoE injector can supply power to all PDs support PoE function. The PoE splitter is used with a PoE switch or the PoE injector to supply power to a non-PoE device.

Q4. The Power LED of PoE injector is not lit.

A1: Ensure the power cord is connected the PoE injector with power source properly.

A2: Ensure the power consumption of the PD doesn't exceed 15.4 W, otherwise the PoE injector will activate the overload protection and the power will be cut off.

Specifications

General Specifications

Standards: IEEE 802.3i, IEEE802.3u, IEEE 802.3ab, IEEE 802.3af

LED: PWR

Cable Type: UTP/STP of Cat. 5 or above (based on the standards that the connected devices comply with)

TL-POE150S:

- 10/100/1000 Mbps Auto-Negotiation RJ45 **LAN IN** Port
- 10/100/1000 Mbps Auto-Negotiation RJ45 **POWER+DATA OUT** Port
- **DC 48 V** Power Input Port

Ports

TL-POE10R:

- 10/100/1000 Mbps Auto-Negotiation RJ45 **POWER+DATA IN** Port
- 10/100/1000 Mbps Auto-Negotiation RJ45 **LAN OUT** Port
- 5 V/9 V/12 V **DC OUT** Power Output Port

Environmental and Physical Specifications

Operating Temperature: 0°C to 40°C (32°F to 104°F)

Storage Temperature: -40°C to 70°C (-40°F to 158°F)

Operating Humidity: 10% to 90% non-condensing

Storage Humidity: 5% to 90% non-condensing

Safety Information

- Keep the device away from water, fire, humidity or hot environments.
- Do not attempt to disassemble, repair, or modify the device. If you need service, please contact us.
- Do not use any other chargers than those recommended.
- Do not use damaged charger or USB cable to charge the device.
- Adapter shall be installed near the equipment and shall be easily accessible.
- Use only power supplies which are provided by manufacturer and in the original packing of this product. If you have any questions, please don't hesitate to contact us.

Please read and follow the above safety information when operating the device. We cannot guarantee that no accidents or damage will occur due to improper use of the device. Please use this product with care and operate at your own risk.

EU Declaration of Conformity

TP-Link hereby declares that the device is in compliance with the essential requirements and other relevant provisions of directives 2014/30/EU, 2014/35/EU, 2009/125/EC, 2011/65/EU and (EU)2015/863.

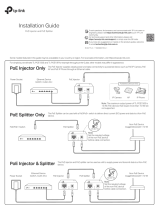
The original EU declaration of conformity may be found at <https://www.tp-link.com/en/ce>.

UK Declaration of Conformity

TP-Link hereby declares that the device is in compliance with the essential requirements and other relevant provisions of the Electromagnetic Compatibility Regulations 2016 and Electrical Equipment (Safety) Regulations 2016. The original UK Declaration of Conformity may be found at <https://www.tp-link.com/support/ukca>



Documents / Resources



[Tp-Link TL-POE150S PoE Injector](#) [pdf] User Guide
PoE Injector, Injector, PoE, TL-POE150S

References

- [TP-Link Product Support - Wireless Networking Equipment Support](#)
- [WiFi Networking Equipment for Home & Business | TP-Link](#)
- [TP-Link Community](#)
- [CE Regulatory Compliance | TP-Link](#)
- [Regulatory Compliance | TP-Link](#)

Related Manuals / Resources



[tp-link TL-POE160S PoE Injector Installation Guide](#)

tp-link TL-POE160S PoE Injector LED Explanation PWR On: Power on Off: Power off PoE (Only for TL-POE170S) On:...



[tp-link TL-SF1008LP Unmanaged Desktop PoE/PoE+ Switch Installation Guide](#)

tp-link TL-SF1008LP Unmanaged Desktop PoE/PoE+ Switch Installation Guide LED Explanation Switches Explanation Note: The numbers in...

[tp-link TL-SG108 Desktop Switch Installation Guide](#)

tp-link TL-SG108 Desktop Switch INSTALLATION Desktop Non-PoE Switch The image may differ from the actual product Desktop PoE...



[tp-link TL-SG1210MP Unmanaged Desktop PoE+ Switch Installation Guide](#)



tp-link TL-SG1210MP Unmanaged Desktop PoE+ Switch Installation Guide LED
Explanation Switches Explanation (Only for TL-SG1210MP)...

Leave a comment

Your email address will not be published.

Comment

Name

Email

Website

Save my name, email, and website in this browser for the next time I comment.

[Manuals+](#),

- [home](#)
- [privacy](#)