

FableKids

love inspired.



Stroller Wagon

"LEO"

X2lite/X4lite
X2plus/X4plus



Thank you for choosing **FableKids**.

Please read the instructions carefully before use and keep for future reference.

Table of Contents

<u>1. Important Safety Information</u>	-----	1
<u>2. Product Overview</u>	-----	2
<u>3. Product Assembly</u>	-----	3
<u>4. Unfold/fold the Wagon</u>	-----	4
<u>5. Adjust the Push Handle Height</u>	-----	4
<u>6. Canopy Installation</u>	-----	5
<u>7. Brake Operation</u>	-----	5
<u>8. Seat Installation</u>	-----	6
<u>9. Secure the Hardness</u>	-----	6
<u>10. Storage Bag Assembly</u>	-----	7
<u>11. Maintenance and Care</u>	-----	7
<u>12. Environmentally friendly disposal</u>	-----	8





Thank you for purchasing our product. Please read the operating instructions carefully before using the product for the first time. If you give the product to a third party, this manual must be handed over with it. Keep the instruction manual for future reference. The drawings in this manual may not match the physical objects. Please refer to the physical objects.

1. Product Overview



2. Important Safety Information



WARNING

- NEVER exceed the maximum person limit on the product.
- Rear basket maximum weight limit: 5KG.
- DO NOT carry more than two (2) (2XLITE/2XPLUS) / four (4) children (4XLITE / 4XPLUS).
- DO NOT exceed per seat limit: 20 kg.
- Avoid serious Injury to children from falling or sliding out. Always use 5 point harness to secure each child.
- NEVER leave children unattended.
- Always set parking brake while loading and unloading children.
- This seating unit is NOT for children under 6 months.
- Avoid serious Injury to children, ensure all locking mechanisms are correctly engaged before use.
- DO NOT use stroller on stairs or escalators with children in it.
- This product is not suitable for running or skating or similar activities.
- DO NOT allow children to play unsupervised next to the product.
- DO NOT let your children play with the product.
- DO NOT overload stroller as it can become unstable.
- DO NOT hang items on the product and place anything on top of the canopy at any time. The product may become unstable parts that have not been supplied by original manufacturer.
- Distribute weight as evenly as possible on each side of the stroller.
- Regularly check hardware and parts. Do not use the product if any hardware or parts are damaged or broken.
- Never leave children in the stroller while ascending or descending stairs.
- Ensure that all the locking devices are engaged before use.
- NEVER leave stroller unattended on a hill or incline even when parking brake is set.
- Always use caution on uneven surfaces. Contents may become unstable and children could be injured by them.
- Always set parking brake when the stroller is stationary.
- Please keep fingers clear of hinged joints when folding / unfolding of the product or when making adjustments to avoid pinch injury.
- Keep your children away from the product when folding and unfolding to avoid injuries.

ATTENTIONS!

- This manual can not cover all instances and unforeseen situations that may occur.
- It is important that everyone who uses the wagon understands the warnings.
- This product must not be operated by children under the age of 12.
- Do not use accessories which are not approved by the manufacturer.
- Only use replacement parts supplied and recommended by the manufacturer.
- Any violations will void your warranty and may cause instability or structural damage to the product or personal injuries.

3. Product Assembly



To assemble the front wheels:

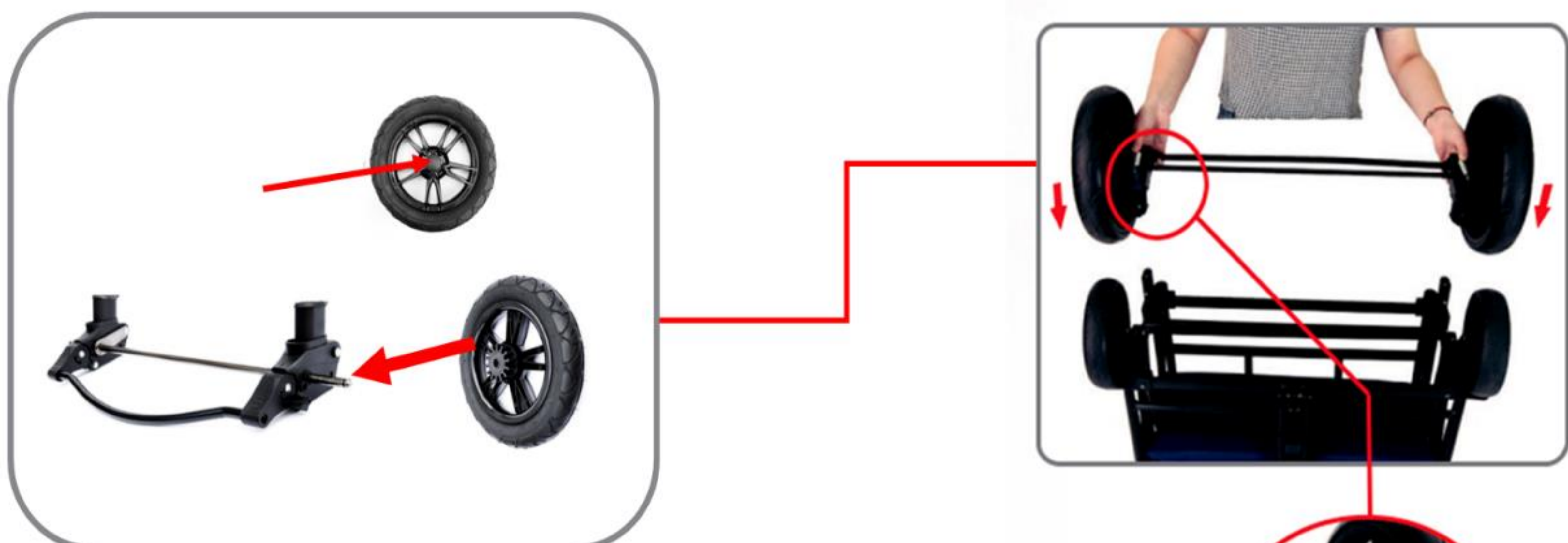
- Insert front wheels into front wheel housing.
- Please ensure you test your installation by pulling the front wheel down a few times before using.



Make sure that the wheels are securely locked in place.

To assemble the rear wheels:

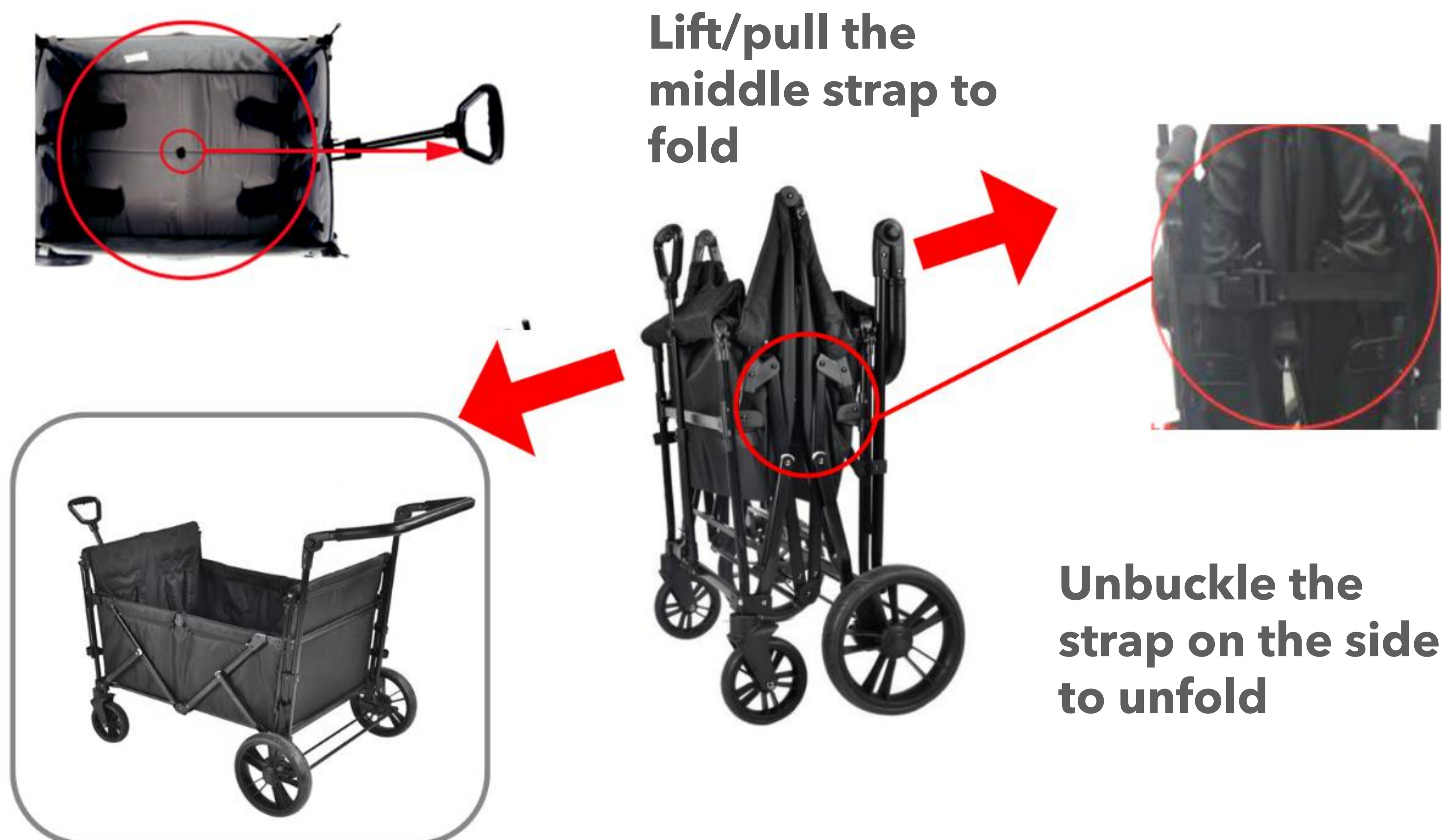
- To attach the rear wheels simply press the center button whilst pushing on to each side of the rear wheel axle.
- **Test this by trying to remove the wheels without pressing the center button.**
- To disassemble the wheels, push the center button and pull.



- Connect the rear wheel to the rear tube joint.
- Check the clips are in place on both sides of the wheel housing.



4. Unfold/Fold the wagon



5. Adjust the Push Handle Height



Push the adjustable handle buttons on both sides simultaneously to adjust the height of the handle

8. Seat Installation (applied to 2XPLUS/4XPLUS)

Attention: Version 2XLITE / 4XLITE has built-in 5-point harness, please direct to Chapter 8.



DO NOT exceed per seat limit: 20 kg.



- Place the seat into one end of the stroller.
- Fix the hooks on both sides of the seat onto the side rail and back rail of the stroller frame.
- Repeat on the other end to assemble the other seat.

9. Secure the harness



Safety Harness

Insert A onto B. Put A, B and C together and click into place. Repeat on the opposite side.



Harness Release

Press button D to release. Slide adjuster along strap.



DO NOT exceed per seat limit: 20 kg. The seat is suitable for children from 6 to 36 months.

- With harness unbuckled, place child in seat.
- Secure child with harness by placing shoulder and waist belts over shoulders and over thighs. Snap buckle tongues into crotch strap buckle.
- Adjust each strap by pulling on the free end of the strap and moving the slide adjuster along strap.

10. Storage Bag Assembly



DO NOT place more than 5 kg in storage bag.

- Slide the storage bag hooks into the plastic slots on the rear frame tubes.
- Gently adjust the bag to level it. Assembly completed.
- Reverse operation to disassemble. .

11. Maintenance and care

- The product should be checked and cleaned regularly.
- Please regularly check all essential parts for damage. Make sure that the mechanical components are working correctly.
- Please regularly check that all screws, rivets, bolts and other fastenings are tight.
- Do not use grease or oil for lubrication, but a silicone-based spray.
- Overload, improper folding or the use of unauthorized accessories can damage or destroy the wagon.
- Store the folded wagon only in a well-ventilated place to prevent mold growth.
- The textile parts may lose color if exposed to heavy use over an extended period (e.g. intensive sunlight); however, this does not constitute a reason for complaint.
- Do not use the wagon if parts are bent, worn or broken.
- Do not use accessories that have not been approved original manufacturer

CARE INSTRUCTION:

- The textiles of the wagon can be cleaned with a sponge and warm soapy water. Do not use any harsh or abrasive cleaning agents (chlorine, etc.) to clean the textile cover. Use only a light soap solution or a special textile cleaning agent.
- The plastic parts, as well as the chassis, should be cleaned with a soap solution.
- After using the wagon in rain or wet, always clean and dry the frame. If the fabric upholstery is soaked, allow the wagon to dry in the upright or stretched state.
- Please remove the wheels regularly and treat the axles and all articulated joints and suspension with a silicone-based spray (no grease or oil), which can ensure the wagon runs smoothly and quietly and limit premature wear and tear.
- By taking care of this wagon, make sure that no rust film is formed, as this is not a reason for complaint.

12. Environmentally friendly disposal

Warning Danger of suffocation! Packaging material is dangerous for children. Never let children play with packaging material.

12.1 Disposal and packaging

The packaging of your unit consists of materials that are necessary to guarantee effective protection during transport. These materials are fully recyclable and therefore reduce the environmental impact. Dispose of the packaging in a bin for recyclable materials.

12.2 Disposal of old equipment

Old appliances must be disposed of in accordance with the guidelines and regulations of the local waste disposal authority. Check with your local administration for the address of the nearest recycling center and deliver your appliance there.



The symbol of the crossed-out dustbin on a Waste electrical or electronic equipment indicates that it must not be disposed of with household waste at the end of its life. Collection points for waste electrical and electronic equipment are available free of charge in your area. You can obtain the addresses from your city or local government. You can find out about other return options created by us on our website

www.fable-kids.com

The separate collection of Waste electrical or electronic equipment is intended to enable the reuse, recycling or other forms of recovery of Waste electrical or electronic equipment and to avoid the negative consequences of disposal on the environment and human health.



FableKids

love inspired.



Office address:
Fablekids
Gneisenaustraße 10-11
D-97074 Würzburg

Return address can be found in the imprint: <https://www.fable-kids.com>

VAT identification number: DE 263752326
Court of the Commercial Register is Würzburg, HRB 10082
WEEE Reg.-No. DE 61617071



Office address: FableKids • Gneisenaustraße 10-11 •
97074 Würzburg



Our customer service number:
Tel. +44 (0) 208 068 5604



E-Mail: info@fable-kids.com



Return address can be found in the imprint: <https://www.fable-kids.com>