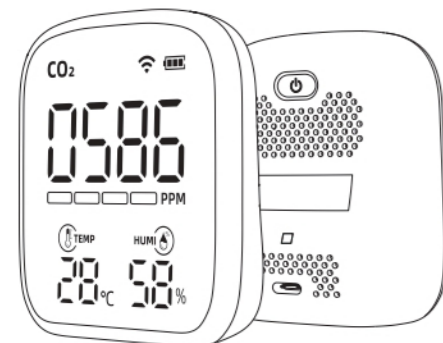


# Air Quality Monitor Operating Instructions

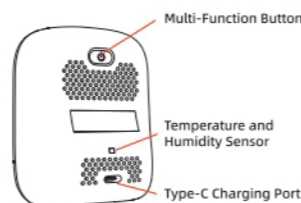
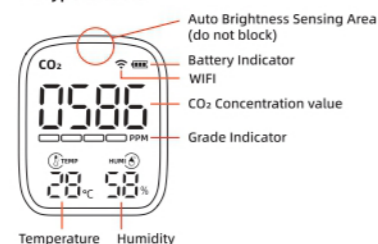


## Air Quality Monitor Operating Instructions

### Product Description

When opening the package, please confirm whether the air quality monitor is in good condition and the accessories are complete; This product comes with battery, please charge it for 5 minutes before using it for the first time, and then press and hold the multi-function button to turn it on; Avoid running out of battery due to long time transportation and other reasons; Please calibrate the product before use.

- 1 x Air Quality Monitor
- 1 x Instruction Manual
- 1 x Type-C Cable



### Calibration Method

#### ① Manual calibration

Turn on the device and place it in an environment with a CO<sub>2</sub> concentration of about 400PPM (outside or by a window for convection ventilation) for 5-10 minutes, press the multi-function button 3 times continuously. After a few seconds, the buzzer gives a long beep sound to complete the manual calibration.

#### ② Automatic calibration

After 24 hours of power on, the sensor will set the lowest CO<sub>2</sub> value within 24 hours as zero value, so please ensure that there are some ventilation time within 24 hours.

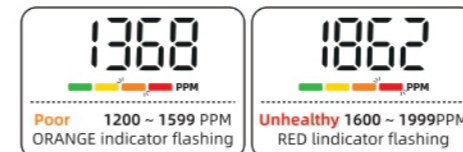
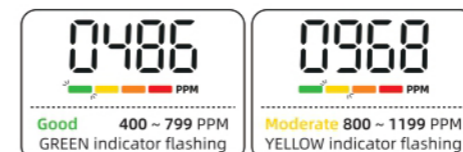
### Operating Instructions

- Power on** : In the power off state, press and hold the multi-function button for 2 seconds, The buzzer sounds "beep", and then displays the current parameters on the screen.
- Charge** : It needs to be charged in time when the battery indicator is red. The battery indicator flashes red and green alternately when charging, and the green light stays on when fully charged.
- Power off** : In the power on state, long press the multi-function button to power off.
- Switch the temperature unit**: In the power-on state, short press the multi-function button once to switch between degrees (°C) and Fahrenheit (°F).
- This product contains a distance sensor, in the dormant state (dormancy after 30 seconds without sensing, you can close this function in the APP) you can approach the product directly or wave it in front of the product to wake up the screen.



### CO<sub>2</sub> Concentration Grade Description

The product is able to measure the concentration of carbon dioxide in the air and to show it in the form of a numerical and graphic value; When the CO<sub>2</sub> concentration value reaches or exceeds 1500 PPM, the product will sound an alarm.



### Connect APP

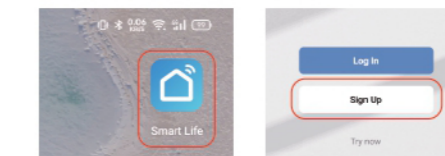
A. Scan the QR code below, download the app and install it.



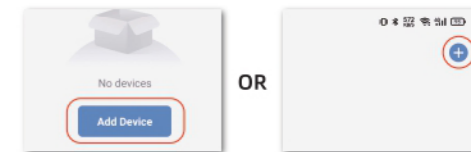
B. By default, the device will enter the pairing state after it turns on the first time, the WiFi icon will flash.



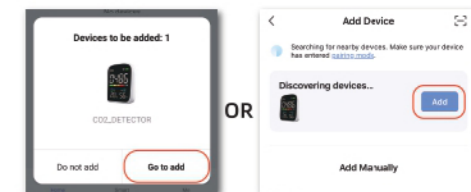
C. Open the app, register account and log in.



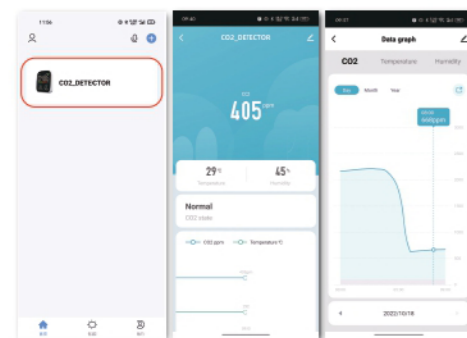
D. Click "Add Device" or "+" icon at the upper right corner to add the device.



At this time, the connection box will pop up, click "Go to add" or "Add" to start pairing.

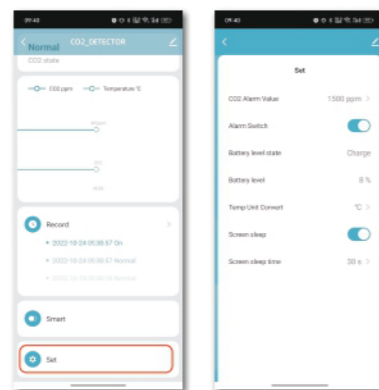


E. Click the icon of connected device to view specific data on the App home page.



Click the value you want to view, then you can check the data of this value.

Slide the screen to the bottom and click Settings to set the CO<sub>2</sub> alarm value, alarm sound, temperature unit switching, screen off function switching and screen off time setting in the settings page.



F. About resetting WiFi

- Click the icon at the upper right corner to enter the settings interface, click "Remove Device", and then re-enter the pairing status after removing the device.



- Reset WiFi on device:

In the off state, press and hold the multi-function button for 8 seconds (during this period the screen lights up and emits the first "tick"), until the buzzer sounds "ticks" for the second time, the WiFi icon flashes and enters the pairing state, then release the button.



### Product Parameters

CO <sub>2</sub> Detection Range	400 ~ 5000 PPM
CO <sub>2</sub> Detection Accuracy	±(50 PPM + 5%*reading value)
Temp Detection Range	0 ~ 50°C
Temp Detection Accuracy	±1°C
Humidity Detection Range	0 ~ 99%RH
Humidity Detection Accuracy	±5%RH
Product Size	70 x 84x 35mm
Power Supply	USB Type-c 5V=2A
Battery	1200mAh

### Cautions

Please read the following instructions carefully before using the product for the first time.

- Since the product uses high-precision sensors and components, please keep the product in a dry environment without direct sunlight.
- When the user purchases and uses this product for the first time, please place it in a ventilated environment to manually calibrate it manually or turn it on and wait for 24 hours for automatic calibration.
- Do not block the air inlet when in use.
- This product has an automatic brightness adjustment function, it will adjust the screen brightness according to the ambient brightness. Please do not block the brightness sensing area, it will cause the screen brightness to be too low.
- The product is not waterproof, do not immerse or splash water or other liquids on it.
- Do not insert sharp, flammable or metal objects into the air inlet of the monitor, otherwise it may cause electric shock and burn.
- Please use the power adapter for power supply when the product is used for a long time. The battery is only suitable for temporary use.
- Beware of the product being dropped or severely impacted, which may cause the product to fail to work properly.
- The detection of this product is qualitative rather than quantitative, there will be some deviation in the measurement value. Please refer to the accuracy range for details.
- WiFi icon is flashing: it is in the pairing state and needs to be paired with the smart phone and the wireless router.
- WiFi icon is always on: normal connection status.
- WiFi icon flashes slowly: It has been paired with the smartphone once, but the current network is abnormal (for example, the paired router is not turned on), and the network needs to be restored or paired again.

- No WiFi icon: The product is not a WiFi version, or the WiFi module is damaged.
- Re-pairing is required if the network is changed.
- A device can only be paired with a smart phone and a router, a smart phone can be paired with multiple devices (up to 200 devices).

**Note:** Do not hold the product close to your face, as your breath will affect the detector's CO<sub>2</sub> detection concentration.

### Disclaimer

- This manual describes the use method and technical parameters of the product as fully as possible, but the company reserves the right to modify this manual without further notice;
- The appearance of the product in the manual may be slightly different from the actual product due to printing and other reasons, please refer to the actual product;
- This information is for reference only and does not constitute any form of commitment;

### Waste Electrical and Electronic Equipment (WEEE) Directive

This label indicates that this product should not be disposed of with household waste. It should be deposited at an appropriate facility to enable recovery and recycling.

