

ABOUT TAIWORLD



Shenzhen Taiworld Technology Co.Ltd. is a subsidiary company of Dongguan ChuangJie Electronics Ltd, which has been specialized in manufacturing oral care products for 7years.Foreign trade sales, experienced after sales team and R&D engineers, we are sure to provide best service to our customers.

We will continue to uphold the brand spirit and corporate philosophy.Speciality, Service,Efficiency,are our commitment .

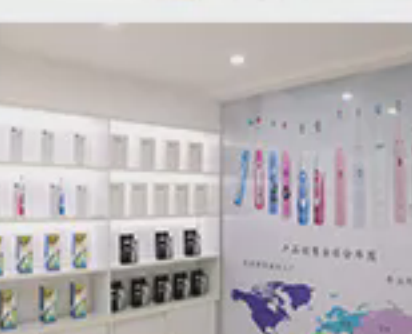
Factory Scale

- Covers an area of 43700sqm more than 500 staffs
- Professional advanced equipment, standardized production
- 8 automated production lines make sure a monthly output of 800000 pieces.



Independent R&D

- Certified with ISO9001-2015 quality management and passed BSCI audit in 2016.
- R&D engineers, developed our own brand CALUR in 2017,support OEM/ODM.
- Owned more than 100 Domestic and foreign patents patents by 2020

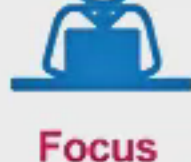


Total quality control

- Strict quality control from raw materials to finish products.
- Meticulous testing during every production process.
- 100% checking before shipment.

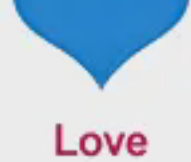


WHY CHOOSE US



Focus

Focused on Oral care industry for more than 7 years.



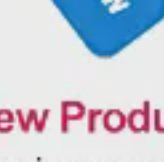
Love

Team members from Taiworld love Oral care industry and enjoy life!



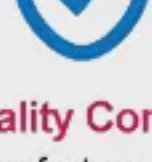
Try

Always try our best to bring the best because you deserve the best!



New Products

Developing new products is key to win the market. We are hitting what's trending now.



Quality Control

As a manufacture we do QC not only for finished products but also for raw materials. Keeping quality high level is our promise.



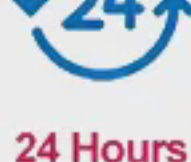
Worldwide

Our factory and company base in China but we cooperate with dealers all over the world.



1 Hour

All your inquiries will be replied within 1 hour during working day.



24 Hours

Feel free to inquiry when we are on holidays We will reply within 24 hours.



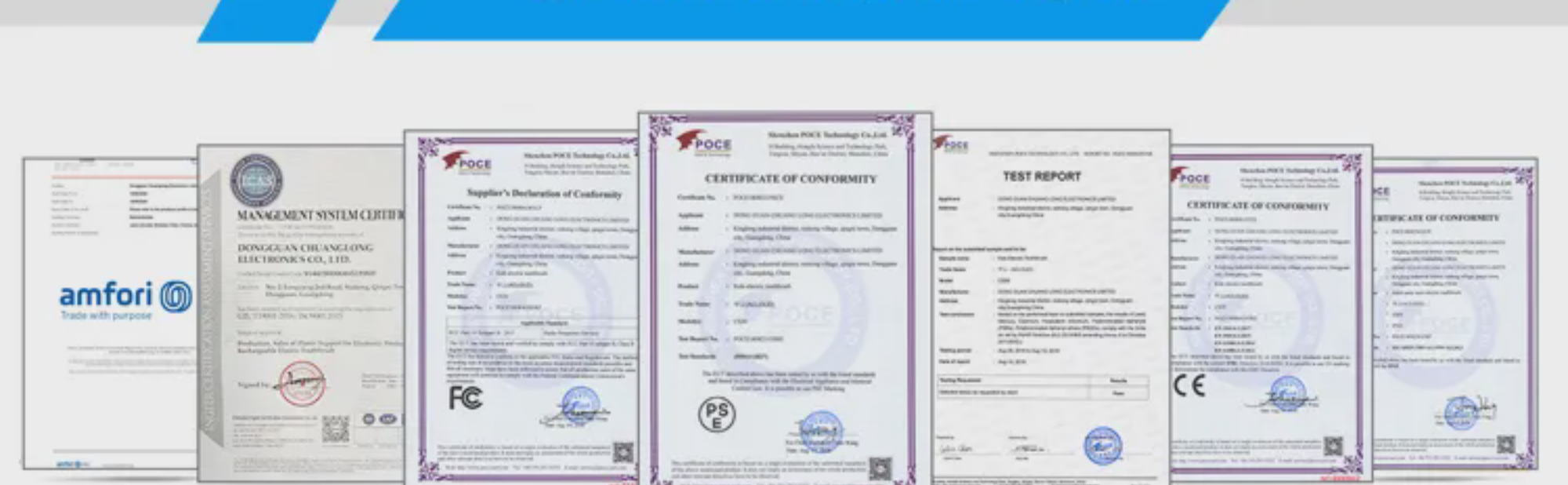
Good Reputation

Quality first Customer-oriented establish long-term and win-win cooperation.

TRADE SHOW



CERTIFICATION



SHIPPING WAY

Shipping Way	 By air	 By railway	 By sea
Delivery Time	5~15days	30~45days	45~55days
Price	High cost	Medium	Low cost
Suitable	Small or sample order	Bulk order	Bulk order

FAQ

Q: DO YOU HAVE MOQ RESTRICTIONS?

A: It depends, MOQ is 20-100pcs for regular styles, 500-1000pcs for customized styles.

Q: CAN WE ORDER SAMPLES FOR QUALITY CHECK BEFORE PLACING THE ORDER?

A: Yes, we can provide you samples for quality inspection first. But you need to pay sample fee and shipping fee.

Q: WHAT IS THE PRODUCTION TIME?

A: The sample delivery time is within 3 working days.

Q: CAN YOU PROVIDE OEM/ODM SERVICE?

A: Yes, we warmly welcome OEM orders. We are a professional electric toothbrush factory with more than 7 years of OEM or ODM experience.

Q: WHAT ARE YOUR PAYMENT TERMS?

A: Our available payment terms are: T/T, Western Union Usually, 30% deposit after placing the order, 70% balance before delivery.

Q: HOW IS THE QUALITY OF YOUR PRODUCTS?

A: Most of our products have passed ROHS, CE, REACH and REAHS certificates, but for new products,if not, we can consider doing it, please note.