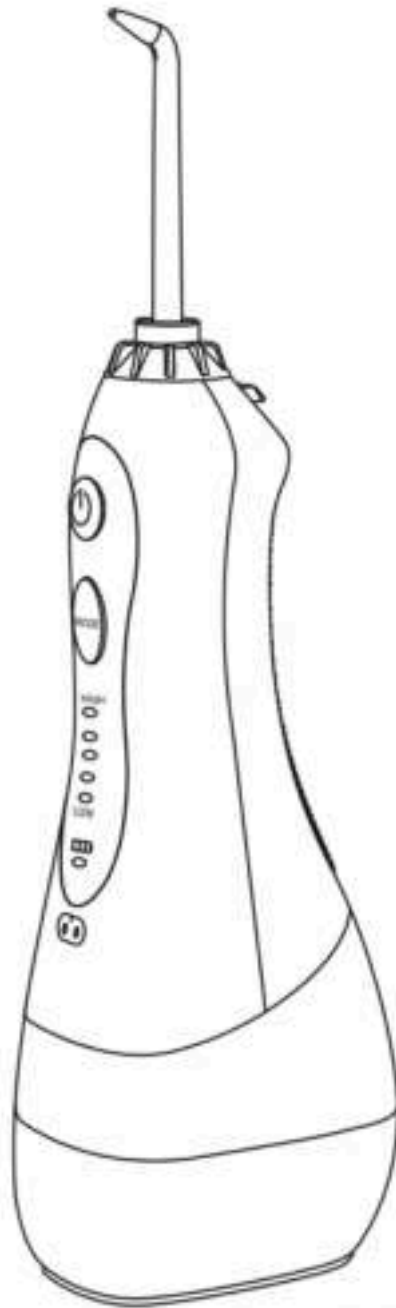


Bluemay

User Manual **Waterflosser**



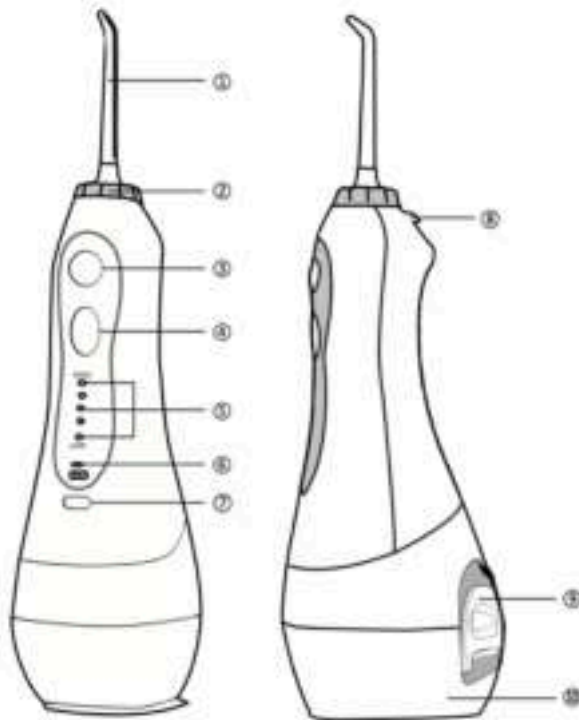


Model	Bluemay Waterflosser	Input	5V 1A
Material	ABS PC	Battery Capacity	2500mAh
Working Power	5W	Water Pressure	40-110 PSI
Charging Time	5 Hours	Waterproof Level	IPX7
Reservoir Capacity	300ML	Water Flow Method	Pulsate Water

Thank you for your confidence! *Bluemay*

- Read the instructions carefully and keep them in a safe place.
- Follow safety precautions for safe use at all times.

Fittings *Bluemay*



1. Nozzle tip
2. Tip rotation dial
3. Power button
4. Mode selection button
5. Mode indicator lights
6. Charging indicator light
7. Charging port
8. Tip release button
9. Water tank cap
10. Water tank

Accessories



USB charging
cable



Tongue
scraper tip



Orthodontic
tip



Periodontal
tip

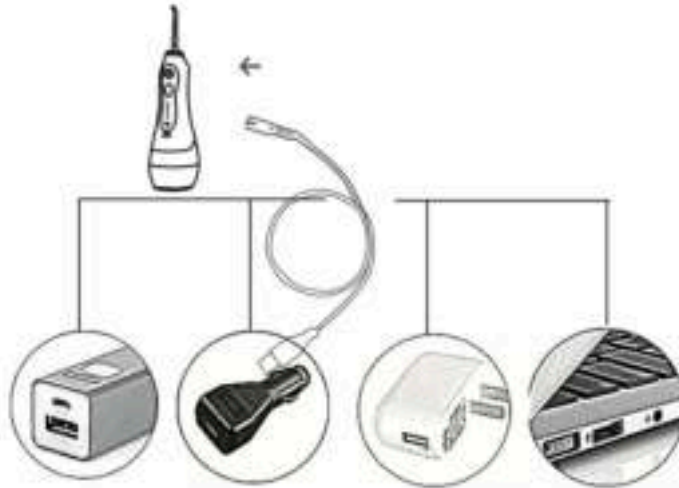


Standard
tip

Warnings and Safety Instructions *Bluemay*

- Misuse of this product can result in personal injury and damage to the device and nearby products.
- Do not handle charger with wet hands.
- Do not place charger in or drop charger into water or other liquid.
- Check the charger cord for damage before the first use and during the life of the product.
- Use this product only as indicated in these instructions or as recommended by your dental professional.
- Only use tips and accessories that are recommended by Bluemay.
- Do not drop or insert any foreign object into any opening on the product.
- Keep charging unit and cord away from heated surfaces.
- Fill reservoir with water or other dental professional recommended solution only.
- Remove any oral jewelry prior to use of this product.
- Do not use if you have an open wound on your tongue or in your mouth.
- Do not plug this device into a voltage system that is different from the voltage system specified on the device or charger.
- Do not use this product if it has a damaged cord or plug, if it is not working properly, if it has been dropped or damaged, or dropped into water.
- Do not direct water under the tongue, into the ear, nose or other delicate areas. This product is capable of producing pressures that may cause serious damage in these areas.
- Close supervision is necessary when this product is used by, on or near children or invalids.

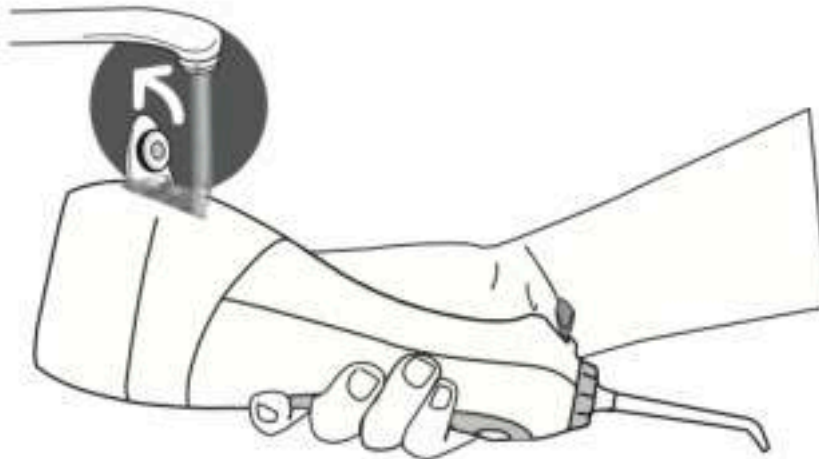
Charging Unit Prior to First Use *Bluemay*



- This product does not come with an AC/DC charger. The unit is charged through devices with 5V USB's power capabilities such as mobile phone, lap top, USB power wall charger, etc. The charge indicator on the handle will flash when charging and will stay on continuously when the unit is fully charged. A complete recharge will take 3-5 hours.

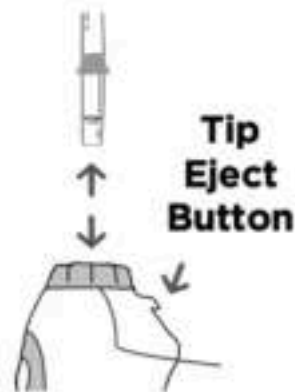
Filling the Reservoir *Bluemay*

- Lift flip top on reservoir and fill the reservoir with lukewarm water.



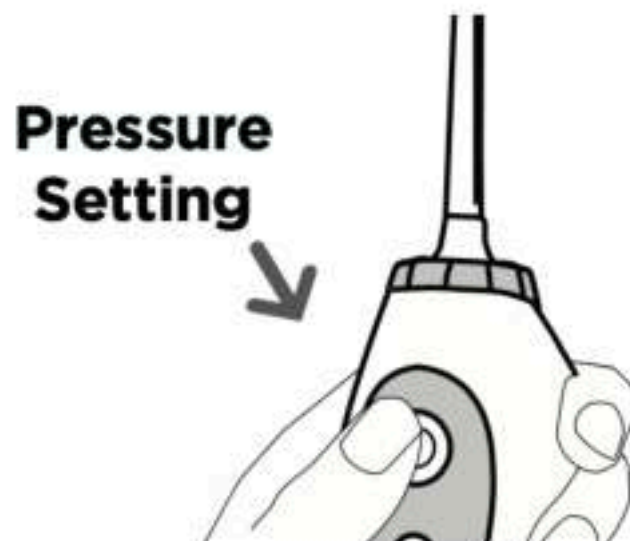
Inserting and Removing Tips *Bluemay*

- Insert tip into the center of the knob at the top of the device handle. Press firmly until the tip clicks into place. To remove the tip from the handle, press the tip eject button and pull tip from the handle.
- Caution: Do not press tip eject button while unit is running.



Adjusting the Pressure Setting *Bluemay*

- You can adjust the pressure setting on your device by pressing the mode button on the handle. Start with the lowest setting and increase to your liking.
- Turn the unit off and empty any liquid left in the reservoir when finished



Tip Usage *Bluemay*

- Jet Tip



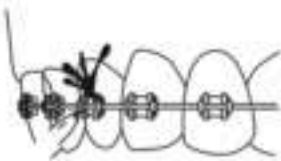
Keep your mouth slightly open to allow the water to run into the sink. Direct the stream of water towards the gumline at 90 degrees so that contact is made where the tooth and gums meet. Maneuver the flow of water from tooth to tooth, remembering to pause briefly between each tooth.

- Periodontal Tip



Place the periodontal tip in contact between teeth and the gumline. Lean the soft tip against a tooth at a 45-degree angle and gently place the tip under the gumline, into the pocket. Start the irrigator by setting it at the lowest pressure and clean by gently following gumline, inserting the periodontal tip in between teeth. Continue tracing along the gumline to massage the gums and safely deliver solution into the gingival pockets below the gumline.

- Orthodontic Tip



Use the Orthodontic Tip to simultaneously brush and rinse hard-to-reach areas around braces, crowns, bridges and implants. Start on the last molar (back tooth). Place tip at 90 degree angle to the tooth at the gumline. Gently glide tip along gumline, pausing briefly to lightly brush area between teeth and around orthodontic bracket, before proceeding to the next tooth and outside of both the upper and lower teeth.

- Tongue Cleaner Tip



Lean your head over the sink. Adjust the pressure button to the lowest setting. Start the irrigator and place the tongue cleaner at the back of your tongue and move it forward to clean your tongue. Repeat to cover entire tongue. Adjust to a higher setting for more water pressure when it feels comfortable.

Troubleshooting *Bluemay*

Problem	Cause	Action
Reservoir leaks	Seal ring is abnormal	Remove the seal ring and reinstall
Low water pressure	Low battery / Nozzle head blocks	Recharge the device / Replace with new nozzle heads
Lasts only few minutes with full charge	Charging cord / Adapter broken	Try new charging cable / Try new adapter
Device makes sound but no water coming	Nozzle head blocks	Replace with new tips
Device doesn't make sound	Low battery	Activate battery by recharging it 16 hours
Device stopped working suddenly	Overheating protection is activated	Restart the device in 2 hours

The water tank is detachable by simply pulling it. It may need to take a bit force when first time to remove it. But after that, it will become much easier.



Maintenance *Bluemay*

- Make sure to throw out the water inside the tank, and run the appliance for 2 to 3 seconds to drain the water after usage. Otherwise bacteria could collect in the remaining water.
- Note: Excessive heat will cause machine to stop when in use, Switch off machine, cool for 2 hours and re-start

Recycle *Bluemay*

- Do not dispose the product with the general waste, but hand it in at a designated collection point for recycling.
- The unit contains a Lithium battery, which is not replaceable.

Warranty *Bluemay*

- We provide a one-year warranty on this product. The customer must be able to show proof of purchase and make this warranty valid within a period of one year from the date of purchase.
- Note: This warranty does not apply:
 - in case of damage caused by incorrect use or repair
 - for parts subject to wear and tear
 - for defects of which the customer was aware at the time of purchase
 - in the event of defects due to the customer's own fault
 - in case of damage by third parties
 - in case repairs are undertaken by unauthorized persons

Service *Bluemay*

- If you have any questions, feel free to send an e-mail to contact@bluemay.nl