



wireless charging base

For iPhone 8, iPhone 8 Plus, iPhone X and
Qi-enabled devices

USER MANUAL

Welcome

Thank you for purchasing the mophie wireless charging base. The wireless charging base is optimized to work with iPhone 8, iPhone 8 Plus and iPhone X, but it also charges any mophie case with wireless charging and other devices with Qi wireless technology. Stable and secure, the mophie wireless charging base charges on contact.

Package contains

- mophie wireless charging base
- AC wall adapter
- Quick-start guide

Features

- Charges on contact. Simply place an iPhone 8, iPhone 8 Plus, iPhone X, mophie case with wireless charging or other device with Qi wireless technology on it to immediately begin recharging.
- High-speed charging. The mophie wireless charging base will deliver up to 7.5W of fast charging to the iPhone once fast wireless charging is enabled with a free software update later this year.

- 360-degree non-slip TPU coating protects your iPhone or other device from scratches and ensures that it stays in place to maintain a constant connection while it's wirelessly charging.
- Electroplated die-cast metal inner structure creates a stable, sturdy platform that stays where you put it — just drop and charge.
- Low standby current draw lets you leave the wireless charging base plugged in when it's not in use.
- Compact design for use in the office or at home.

Compatibility

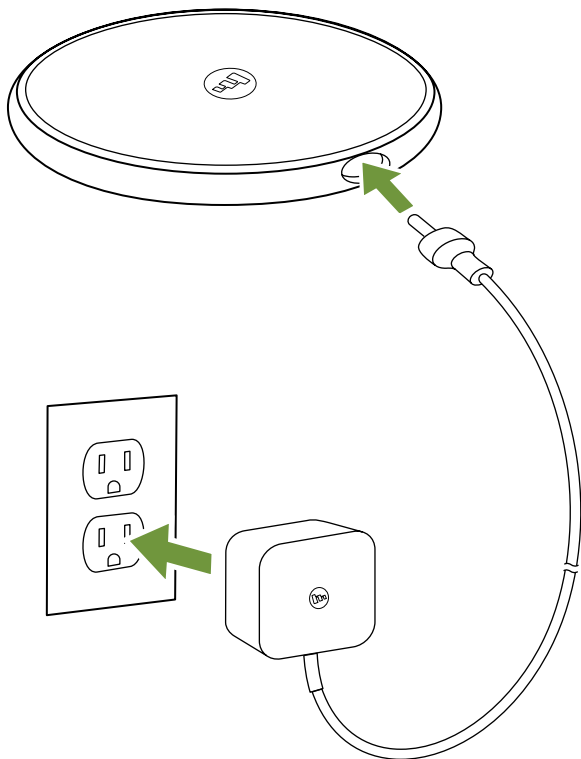
The mophie wireless charging base is optimized to work with iPhone 8, iPhone 8 Plus and iPhone X, but it also charges any mophie cases with wireless charging as well as other devices with Qi wireless technology.

- The mophie wireless charging base will deliver up to 7.5W of fast charging to the iPhone once fast wireless charging is enabled with a free software update later this year.

Charging your wireless device

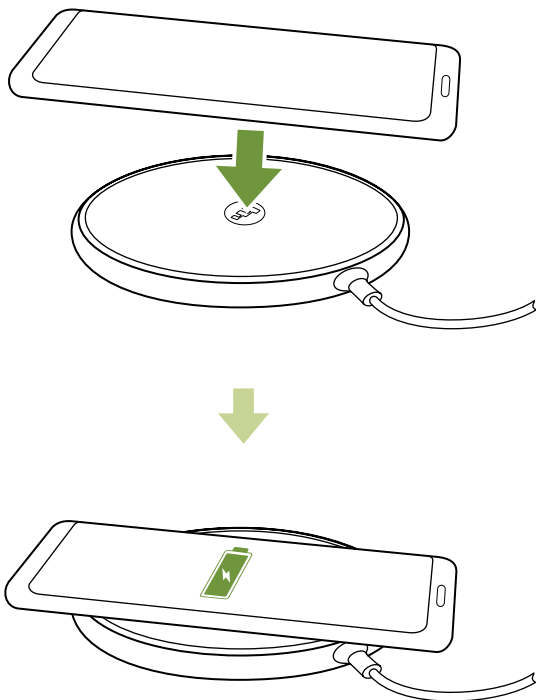
1. Connect the supplied AC wall adapter to the charging base and to the wall outlet.

1



2. Place the wireless device on the wireless charging base as shown in the illustration below. Make sure the center of the device is aligned over the center of the charging base. Charging will begin on contact.

2



wireless charging base charging status indicator

The wireless charging base has an LED that indicates its charging status:

LED illuminated continuously:

- The wireless device is properly charging.

LED flashing:

- A metallic foreign object (keys, etc.) has been detected on the wireless charging base.

Taking care of your wireless charging base

- Keep your wireless charging base dry and away from moisture and corrosive materials.
- Do not clean your wireless charging base with harsh chemicals, soaps or detergents. Just wipe it with a soft, water-dampened cloth.

Warranty

At mophie, we are dedicated to making the best quality products. To back this up, this product is warranted for 2 years from date of purchase. This warranty does not affect any statutory rights that you may be entitled to. Keep a copy of your purchase receipt as proof of purchase. Be sure to register your product at mophie.com. Failure to register your product and/or provide proof of purchase may void the warranty. For full details regarding warranty terms and exclusions, please visit: mophie.com/warranty.

Exclusions & limitations

Except for the limited warranty expressly set forth or to the extent restricted or prohibited by applicable law, mophie expressly disclaims any and all other warranties express or implied, including any warranty of quality, merchantability, or fitness for a particular purpose, and you specifically agree that mophie shall not be liable for any special, incidental, indirect, punitive, or consequential damages of any type on any mophie product. In addition to and without limiting the generality of the foregoing disclaimers, the limited warranty does not, under any circumstances, cover the replacement or cost of any electronic device or personal property inside or outside of the mophie product.

Customer service







Telephone: 1-888-8mophie

International: +1 (269) 743-1340

Web: www.mophie.com/cs

Warning

Read all instructions and warnings prior to using this product. Improper use of this product may result in product damage, excess heat, toxic fumes, fire or explosion, for which damages you ("Purchaser"), and not mophie llc ("Manufacturer") are responsible.

-  Do not store device in high-temperature environment, including heat caused by intense sunlight or other forms of heat. Do not place device in fire or other excessively hot environments.
-  Do not disassemble this device or attempt to re-purpose or modify it in any manner.
-  For questions or instructions for the various ways to charge using this device refer to the Charging Your Wireless Device section of this manual.
-  Do not attempt to replace any part of this device.
-  If this device is accessible to or may be used by a minor, purchasing adult agrees to be solely responsible for providing supervision, instruction, and warnings. Purchaser agrees to defend, indemnify, and hold Manufacturer harmless for any claims or damages arising from unintended use or misuse by a minor.
-  All products have gone through a thorough quality assurance inspection. If you find that your device is excessively hot, is emitting odor, is deformed, abraded, cut or is experiencing or demonstrating an abnormal phenomenon, immediately stop all product use and contact Manufacturer.

- ✘ To comply with FCC RF exposure compliance requirements, the wireless charging base must be used with a separation distance of at least 10cm from all persons.

Legal

This product is meant for use only in conjunction with the appropriate device. Please consult your device packaging to determine whether this product is compatible with your particular device. Manufacturer is not responsible for any damages to any device incurred through the use of this product.

Manufacturer shall not in any way be liable to you or to any third party for any damages you or any third party may suffer as a result of use, intended or unintended, or misuse of this product in conjunction with any device or accessory other than the appropriate device for which this product is designed. Manufacturer will not be responsible for any damages you or any third party may suffer as a result of misuse of this product as outlined above. Purchaser agrees to defend, indemnify, and hold Manufacturer harmless for any claims or damages arising from unintended use or misuse, including use with an unintended device.

mophie, Stay Powerful, mophie loves you, the five-circles design, and the mophie logo are trademarks of mophie inc. iPhone is a trademark of Apple Inc, registered in the U.S. and other countries. The trademark "iPhone" is used with a license from Apple Inc. "Made for iPhone" means that an accessory has been designed to connect specifically to iPhone and has been certified by the developer to meet Apple performance standards. Apple is not responsible for the operation of this device or its compliance with safety and regulatory standards. Please note that the use of this accessory with iPhone may affect wireless performance. The 'Qi' symbol is a trademark of the Wireless Power Consortium. All rights reserved. Patents: mophie.com/patents.

This device complies with part 15 of the FCC Rules and RSS-Gen of IC Rules. Operation is subject to the following two conditions: (1) This device may not cause harmful interference, and (2) this device must accept any interference received, including interference that may cause undesired operation.

NOTE: This equipment has been tested and found to comply with the limits for a Class B digital device, pursuant to part 15 of the FCC Rules. These limits are designed to provide reasonable protection against harmful interference in a residential installation. This equipment generates, uses, and can radiate radio frequency energy and, if not installed and used in accordance with the instructions, may cause harmful interference to radio communications. However, there is no guarantee that interference will not occur in a particular installation.

If this equipment does cause harmful interference to radio or television reception, which can be determined by turning the equipment off and on, the user is encouraged to try to correct the interference by one or more of the following measures:

- Reorient or relocate the receiving antenna.
- Increase the separation between the equipment and receiver.
- Connect the equipment into an outlet on a circuit different from that to which the receiver is connected.
- Consult the dealer or an experienced technician for help.

CAUTION: To comply with the limits of the Class B digital device, pursuant to Part 15 of the FCC Rules, this device must be used with certified peripherals and shielded cables. All peripherals must be shielded and grounded. Operation with non-certified peripherals or non-shielded cables may result in interference to radio or reception.

MODIFICATION: Any changes or modifications of this device could void the warranty.

 STAY POWERFUL™