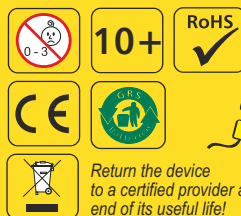


Firmenanschrift aufbewahren - Nicht geeignet für Kinder unter 3 Jahren! - Verschluckbare Kleinteile! Keep the address of the company - Not suitable for children under 3 years! - Contains small parts! Veuillez conserver l'adresse - Ne convient pas pour les enfants de moins de trois ans! - Contient de petites pièces pouvant être absorbées! Adres bewaren - Niet geschikt voor kinderen beneden 3 jaar! - Kleine onderdelen kunnen worden ingeslikt!

SOL-EXPERT group, C.Repy - Mehlißstrasse 19 - D-88255 Baindt
Tel.: +49 (0)7502 - 94115-0 - Fax: +49 (0)7502 - 94115-99
info@sol-expert-group.de - www.sol-expert-group.de

MADE IN EUROPE



No. 44495



QR Codes

Hier geht es zur Anleitung:



<https://www.sol-expert-group.de/Rund-ums-Loeten/Piffige-Loetbausaeetze/Holzbausatz-StormCar-zum-Loeten::1275.html?language=de>

Click here for the instructions:



<https://www.sol-expert-group.de/All-about-soldering/Smart-kits-for-soldering/Wooden-kit-StormCar-for-soldering::1275.html?language=en>

Cliquez ici pour les instructions:

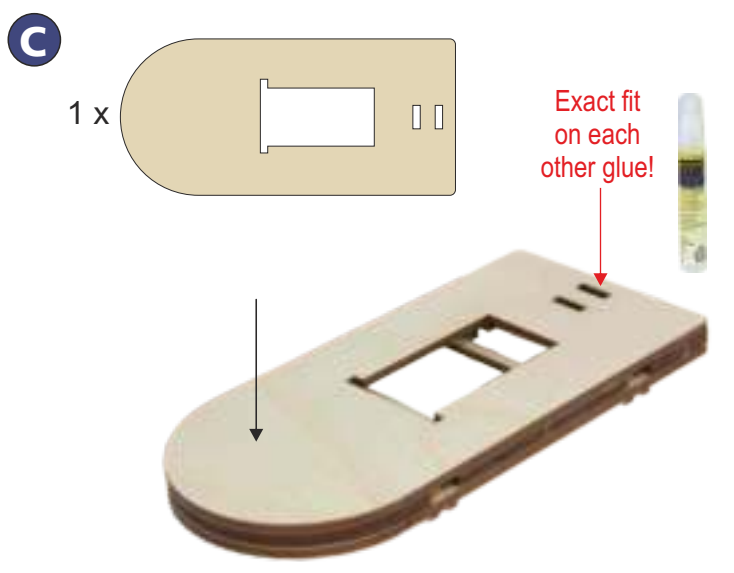
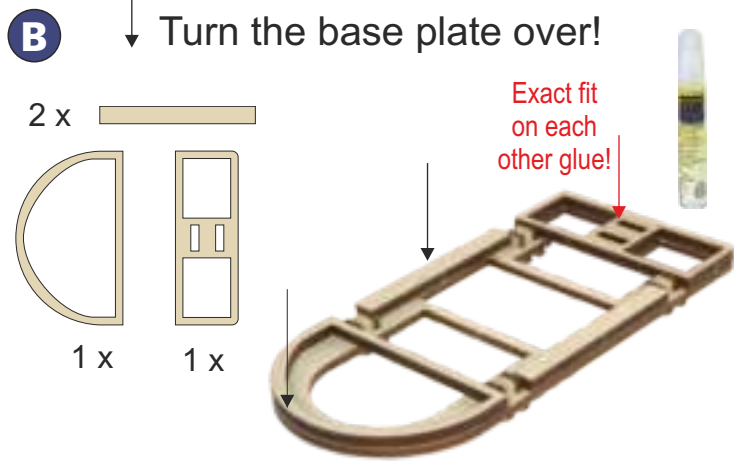
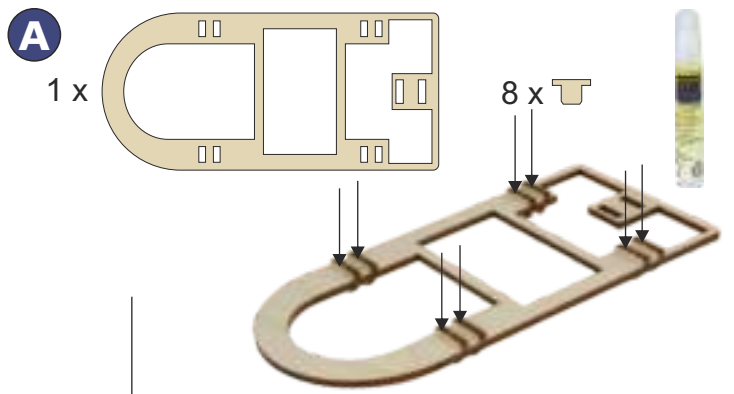


<https://www.sol-expert-group.de/Autour-de-la-soudure/Kits-astucieux-pour-la-soudure/Kit-en-bois-StormCar-pour-souder::1275.html?language=fr>

Klik hier voor de instructies:



<https://www.sol-expert-group.de/Rond-solderen/Clever-kits-voor-het-solderen/Houten-kit-StormCar-voor-solderen::1275.html?language=nl>

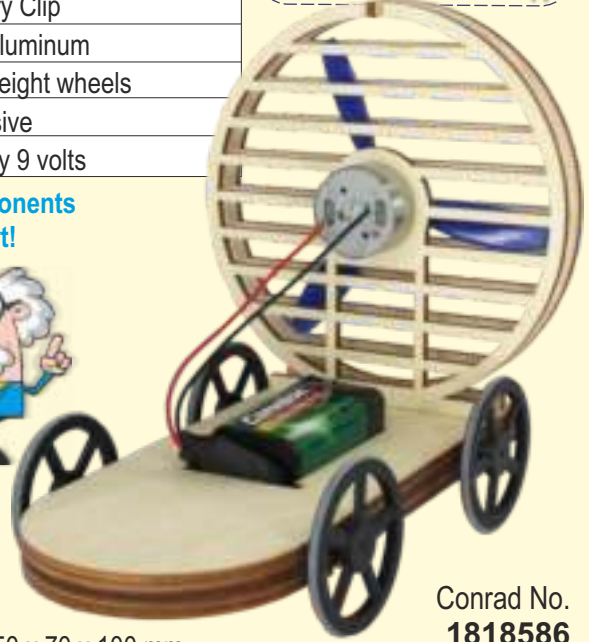


Parts list:

Qty.	Component
1	wooden parts kit
2	M1.6 x 4 mm
1	RF300 with solder connection
1	propeller
1	Battery Clip
2	axis aluminum
4	lightweight wheels
1	adhesive
1	battery 9 volts

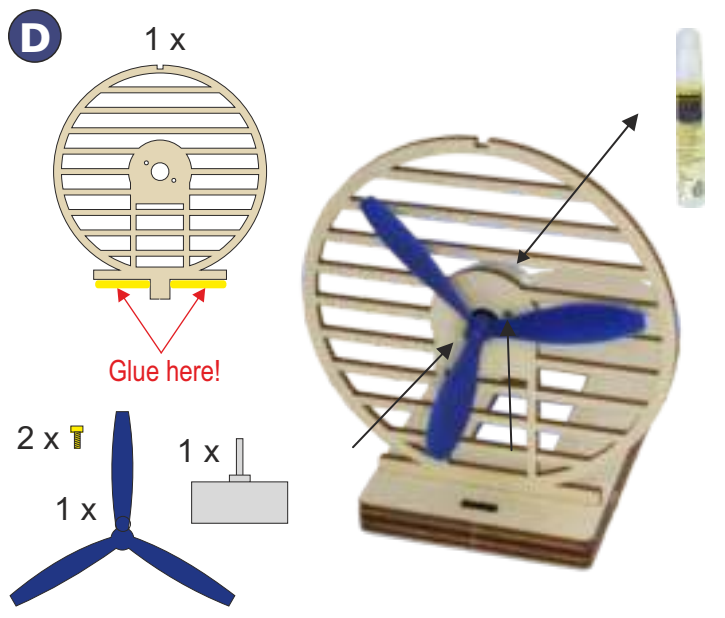


Check components and sort!

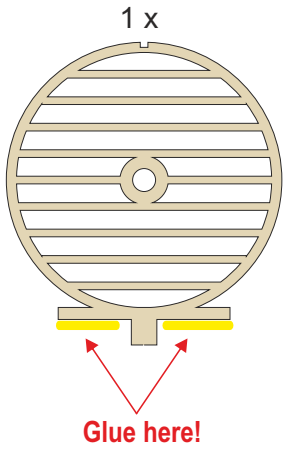


Dimension: 150 x 70 x 100 mm

Conrad No. 1818586



E



F

- 1 x
- 1 x
- 2 x
- 4 x



Cut the cables on the battery clip to about 12 cm, then solder the **black cable to the soldering contact with the red dot.**

