

# **VEVOR<sup>®</sup>**

**TOUGH TOOLS, HALF PRICE**

Technical Support and E-Warranty Certificate [www.vevor.com/support](http://www.vevor.com/support)

## **RETRACTABLE DOG GATE**

**MODEL: YJ-3355/YJ-3371/YJ-33110**

We continue to be committed to provide you tools with competitive price.

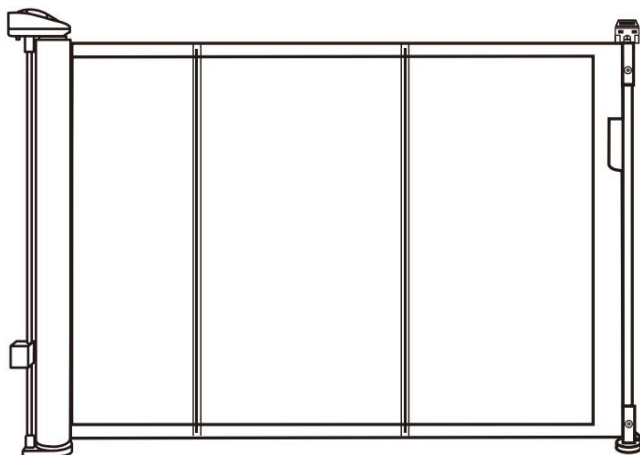
"Save Half", "Half Price" or any other similar expressions used by us only represents an estimate of savings you might benefit from buying certain tools with us compared to the major top brands and does not necessarily mean to cover all categories of tools offered by us. You are kindly reminded to verify carefully when you are placing an order with us if you are actually saving half in comparison with the top major brands.

# VEVOR<sup>®</sup>

TOUGH TOOLS, HALF PRICE

RETRACTABLE  
DOG GATE

MODEL: YJ-3355/YJ-3371/YJ-33110



## NEED HELP? CONTACT US!

Have product questions? Need technical support? Please feel free to contact us:

**Technical Support and E-Warranty Certificate**  
[www.vevor.com/support](http://www.vevor.com/support)

This is the original instruction, please read all manual instructions carefully before operating. VEVOR reserves a clear interpretation of our user manual. The appearance of the product shall be subject to the product you received. Please forgive us that we won't inform you again if there are any technology or software updates on our product.

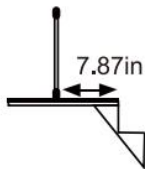
## SAFETY INSTRUCTIONS

**WARNING:** Always follow basic safety precautions when using these devices.

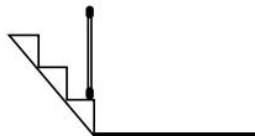
These include:

1. To prevent serious injury or death, securely install gate or enclosure and use according to manufacturer instructions.
2. Never use with a child able to climb over or dislodge /open the gate or enclosure.
3. Never leave child unattended. This product will not necessarily prevent all accidents.
4. Use only with the locking /latching mechanism securely engaged.
5. This product is intended for use with children from 6-24 months or small to medium pets.
6. Incorect fitting or positioning of this gate can be dangerous. **Never let go of handle when the gate is retracting ! (High resilience)**
7. This safety gate must **NOT** be fitted across window openings and the like.
8. **Do NOT** use the safety gate if any components are damaged or missing.
9. Install this away from heaters and other sources of heat.
10. Always check that gate is locked after closing gate.
11. If the gate is used at the bottom of stairs to prevent the child from climbing up the stairs, it must be placed on the lowest stair.
12. If the gate is used at the top of stairs to prevent the child from fling down the stairs, it **MusT BE POSITIONED 7.87in BACK** from the top step.
13. The safety gate must be fitted between rigid surfaces such as plaster board, timber or hardwall.
14. You **MUST** install mounting hardware to keep gate in place.
15. Without mounting hardware child can push out and escape.
16. **NEVER** use to keep child away from pool.

Top of the stairs



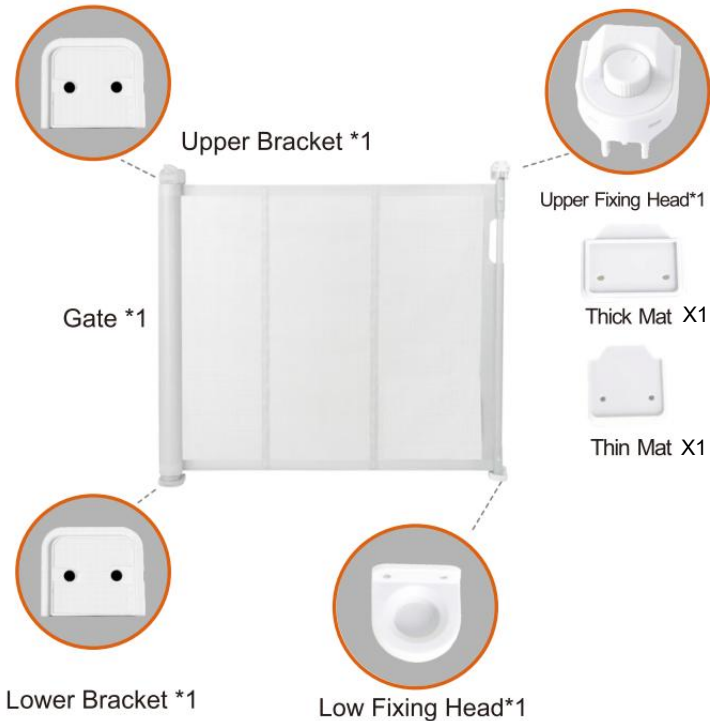
Bottom of the stairs



## MODEL AND PARAMETERS

<b>Model</b>	YJ-3355	YJ-3371	YJ-33110
<b>Unfold Siz</b>	1530*870mm	1950*870mm	2950*870mm
<b>Color</b>	Black / Gray / White		

## COMPONENTS



Short Screw Plugs\*12(For concrete walls)



Long Screws\*4 (Need two, two more)



Short Screws\*8 (Need Six, two more)

## INSTALLATION

Note:

1. Thank you very much for purchasing this product.
2. The entire installation process takes about 20 minutes, please read the installation manual patiently, find the corresponding components and select the right location to be installed.
3. Please prepare an electric screwdriver and marker pen before install.
4. The product must be installed on the ground to better realize the separation function.



1. Main body Gate.



2. Install the two Brackets on the Gate.



3. Peel off the Paper of Adhesive tape from the two Brackets.



4.1 Select the installation location, make sure the bottom of the main body door Gate is on the ground.



4.2 Select the installation location, make sure the bottom of main body door gate is on ground.  
If there are baseboard on the wall, pls slide lower Bracket up to the suitable position until go around the baseboard.



5. Take out door gate from the 2 brackets according to the arrow .



6. Mark the holes position of the two brackets and then pull out the two brackets from wall.



7. Drill holes of with an electric drill as the marks.



8. Insert the expansion plugs to all holes.



9. Drill the two Brackets to wall as the holes.



10. Install Gate to upper Bracket as the arrow



11. Install Gate to Lower Bracket as the arrow, please make sure install Gate to upper Bracket at first then install Gate to Lower Bracket .



12. Pull the cloth horizontally to the opposite door frame to find the installation position of lower latches.



13. Lock the fixed position of the door rail.



14. Insert the gate to the lower fixing; head, and find the installation position (make sure the net is vertical) And mark the holes position.



15. Insert the gate to the upper fixing head, and find the installation position (make sure the net is vertical) And mark the holes position.



16. Pull the cloth, then press the button to unlock, let the cloth roll back.



17. Drill the Lower Fixing Head to wall according to the marks. Drill a 2.5mm pilot hole at each pencil mark for timber surface. And for hard wall drill a 5mm hole and insert plugs. Note for all other surfaces use suitable fixing

## 18 PLEASE CHOOSE ONE OF THE INSTALLATION METHODS ACCORDING TO THE ACTUAL CONDITION OF YOUR HOME WALLS



18.1 If there are no baseboard/skirting on the wall, Drill the Upper Fixing Head to wall according to the marks. Drill a 2.5mm pilot hole at each pencil mark for timber surface. And for hard wall drill a 5mm hole and insert plugs.



18.2 If there are baseboard/skirting on the wall, Pls add suitable thickness mat to Upper Fixing Head and Drill it to the wall according to the marks. Upper Fixing Head with Thick Mat for using the maximum thickness baseboard is 1.5cm.



18.3 If there are baseboard/skirting on the wall, Pls add suitable thickness mats to Upper Fixing Head and Drill it to the wall according to the marks. Upper Fixing Head with Thick Mat and Thin thickness baseboard is 2cm.

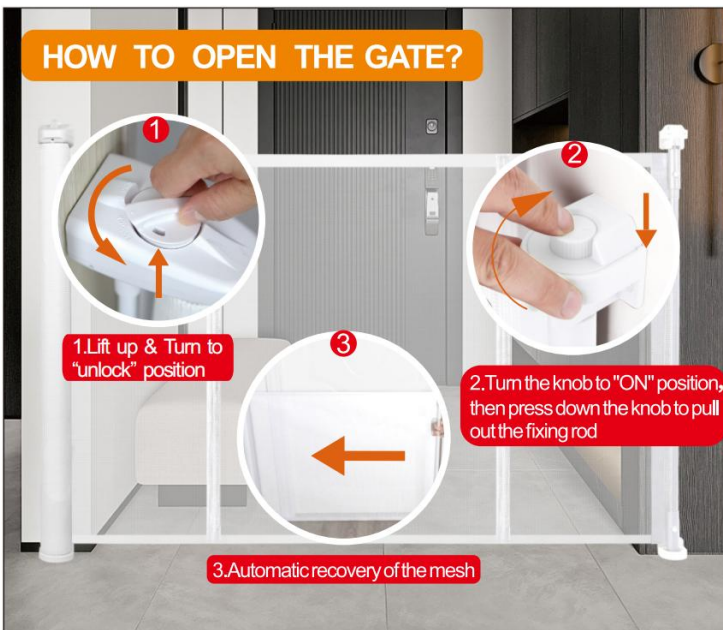


19. The installation is complete Enjoy your gate!



20. Enjoy your gate!

## HOW TO USE





## SUCTION CUP CLIP

## PARTS REQUIRED

**Note: Only 110inch(YJ-33110) have the suction cup clip!**

Thank you very much for purchasing this product  
The entire installation process takes about 20 minutes.  
Please read the installation manual patiently, find the corresponding components and select the right location to be installed.

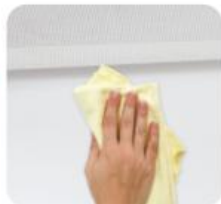


**Note: The suction cup clip is optional to install for better stability.**

## Steps for installing on flat ground

(Tools you need to prepare: cleaning cloth)

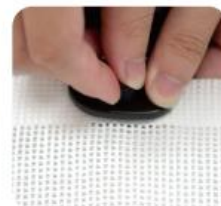
1. Pull the gate first determine the installation position, and wipe the need to install the position with a cloth.



2. Choose a suitable position on the double-layer mesh below the mesh gate, and use scissors or use a screwdriver to cut a small hole of about **0.19 inches**.



3. Press the screw and thread it through the mesh cloth, and finally tighten it.



4. Finally, press it on the ground, Done!

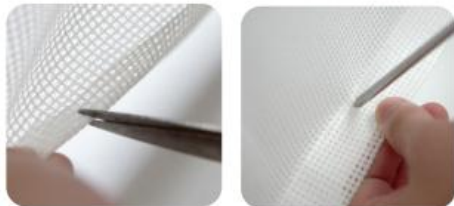


## Installation steps on not flat positions

1. Pull the gate first determine the installation position.



2. Choose a suitable position on the double-layer mesh below the mesh gate, and use scissors or use a screwdriver to cut a small hole of about **0.19 inches**.



3. On not flat ground is not suitable, and the bottom of the suction cup needs to be installed with iron sheet.



4. Tear off one side of the Double-sided tape and stick it to the bottom of the iron sheet.



5. Press the screw and thread it through the mesh cloth, and finally tighten it.



6. Tear off the bottom Double-sided tape and press the clip to the ground.



7. Done!



## MAINTENANCE

1. Clean by using a sponge with warm water or mild detergent.
2. DO NOT use abrasive cleaners or bleach.
3. Check the gate regularly to ensure all hardware and mounts are securely tightened.

**Address:** Baoshanqu Shuangchenglu 803long 11hao 1602A-1609shi Shanghai

**EC REP:** SHUNSHUN GmbH. Römeräcker 9 Z2021,76351

Linkenheim-Hochstetten, Germany

**UK REP:** Pooledas Group Ltd. Unit 5 Albert Edward House, The Pavilions Preston,  
United Kingdom

**Imported to AUS:** SIHAO PTY LTD. 1 ROKEVA STREETEASTWOOD NSW  
2122 Australia

**Imported to USA:** Sanven Technology Ltd. Suite 250, 9166 Anaheim Place,  
Rancho Cucamonga, CA 91730

Made In China

**VEVOR<sup>®</sup>**

**TOUGH TOOLS, HALF PRICE**

**Technical Support and E-Warranty Certificate**

**[www.vevor.com/support](http://www.vevor.com/support)**