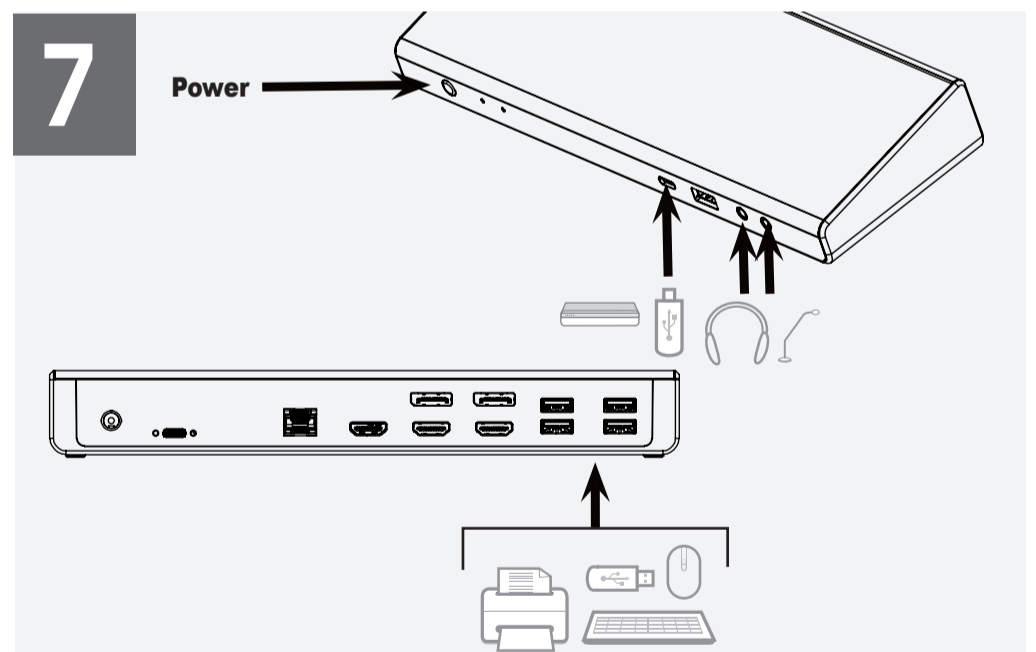
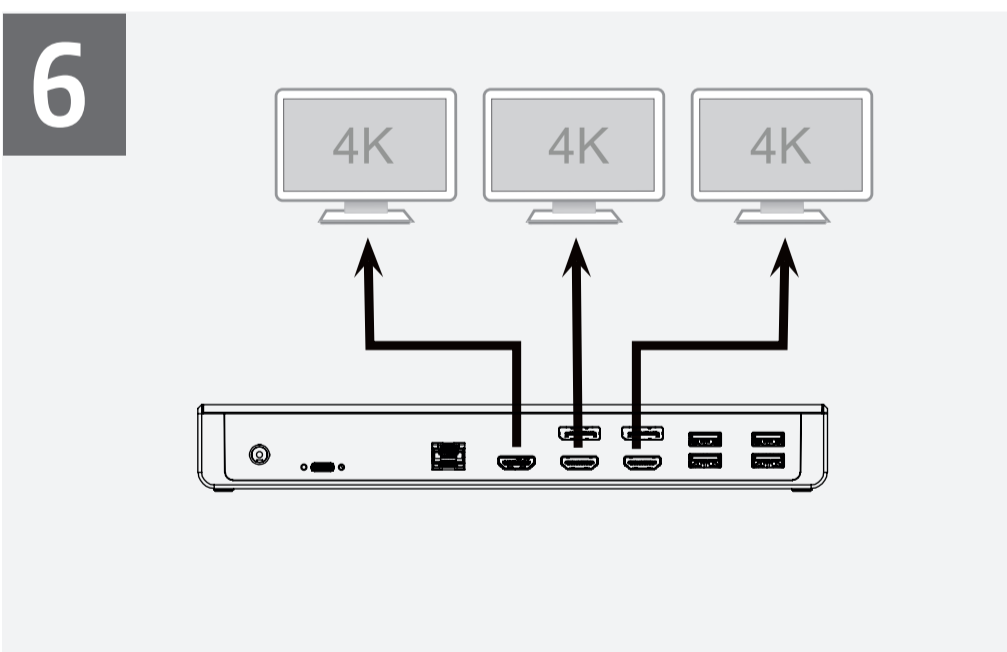
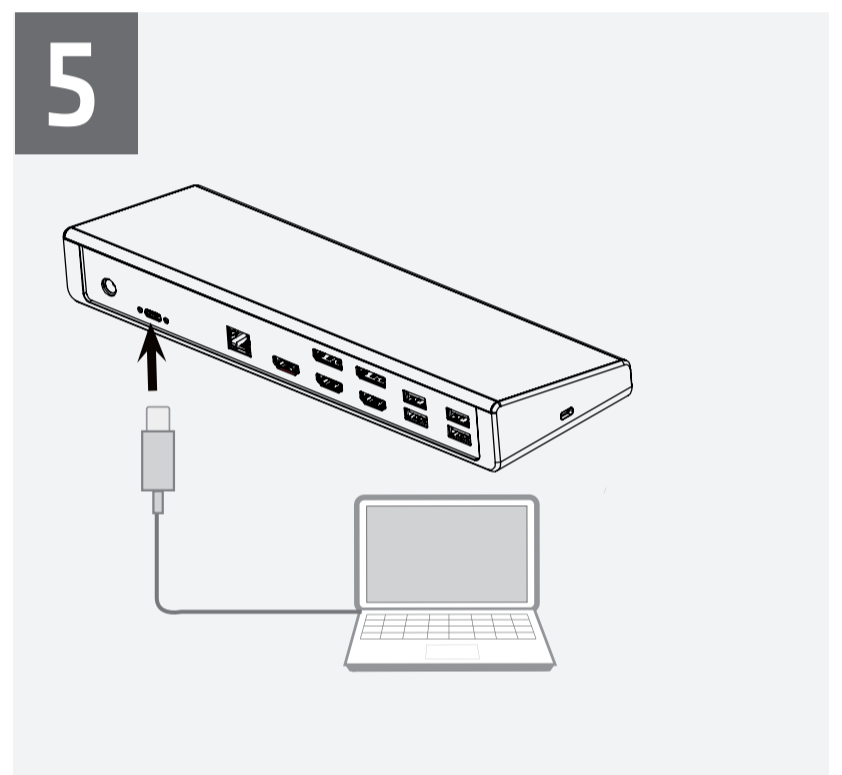
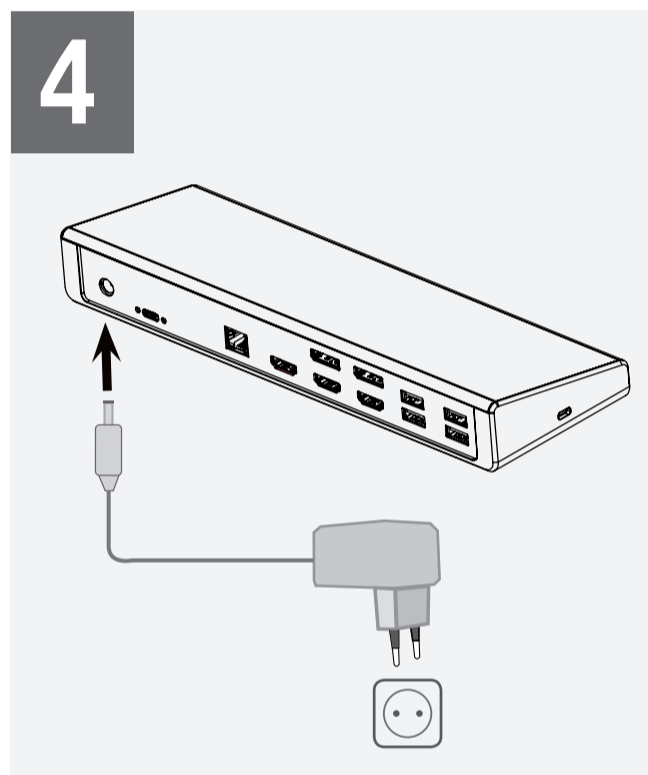
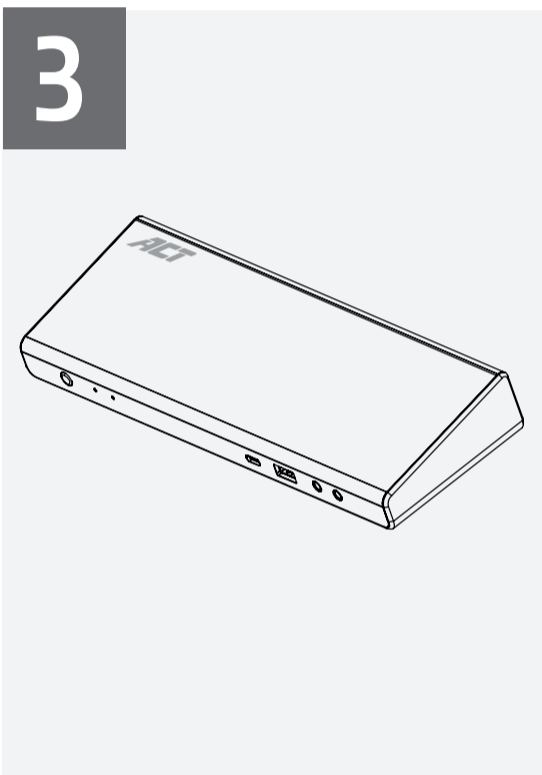




**Caution: Do not connect the docking to your computer before installing the driver.**



EN You can find safety information at [www.act-connectivity.com/safety](http://www.act-connectivity.com/safety)

NL Kijk op [www.act-connectivity.com/safety](http://www.act-connectivity.com/safety) voor de veiligheidsinformatie FR Vous pouvez trouver des informations portant sur la sécurité sur [www.act-connectivity.com/safety](http://www.act-connectivity.com/safety) IT È possibile trovare informazioni sulla sicurezza sul sito [www.act-connectivity.com/safety](http://www.act-connectivity.com/safety) DE Sicherheitshinweise finden Sie unter [www.act-connectivity.com/safety](http://www.act-connectivity.com/safety) ES Puede encontrar información de seguridad en [www.act-connectivity.com/safety](http://www.act-connectivity.com/safety) PT Pode encontrar informações relativas a segurança em [www.act-connectivity.com/safety](http://www.act-connectivity.com/safety) HU A biztonsági információkat a [www.act-connectivity.com/safety](http://www.act-connectivity.com/safety) oldalon találhatja meg CZ Bezpečnostní informace můžete nalézt na adrese [www.act-connectivity.com/safety](http://www.act-connectivity.com/safety) DK Du kan finde sikkerhedsoplysningerne på [www.act-connectivity.com/safety](http://www.act-connectivity.com/safety) NO Du finner sikkerhetsinformasjon på [www.act-connectivity.com/safety](http://www.act-connectivity.com/safety) SE Du hittar säkerhetsinformation på [www.act-connectivity.com/safety](http://www.act-connectivity.com/safety) FI Turvallisuustiedot löytyvät osoitteesta [www.act-connectivity.com/safety](http://www.act-connectivity.com/safety) SI Varnostne informacije so na voljo na naslovu [www.act-connectivity.com/safety](http://www.act-connectivity.com/safety) GR Μπορείτε να βρείτε πληροφορίες ασφαλείας στη διεύθυνση [www.act-connectivity.com/safety](http://www.act-connectivity.com/safety) BG Информация за безопасност ще откриете на [www.act-connectivity.com/safety](http://www.act-connectivity.com/safety) PL Informacje dotyczące bezpieczeństwa znajdują się pod adresem [www.act-connectivity.com/safety](http://www.act-connectivity.com/safety).

EN For service, manuals, firmware or updates visit [www.act-connectivity.com](http://www.act-connectivity.com)

NL Voor service, handleidingen, firmware updates bezoek u [www.act-connectivity.com](http://www.act-connectivity.com) FR Pour l'entretien, les manuels, les mises à jour du firmware ou l'assistance, visitez [www.act-connectivity.com](http://www.act-connectivity.com) IT Per servizi, manuali, aggiornamento firmware e supporto visitare [www.act-connectivity.com](http://www.act-connectivity.com) DE Dienstleistungen, Handbücher, Firmware-Updates oder Support-Dienste werden unter [www.act-connectivity.com](http://www.act-connectivity.com) angeboten ES Para obtener asistencia, manuales, actualizaciones de firmware o soporte, visite [www.act-connectivity.com](http://www.act-connectivity.com) PT Para assistência, manuais, atualizações de firmware ou apoio técnico, visite [www.act-connectivity.com](http://www.act-connectivity.com) HU Szerviz, kézikönyvek, firmware-frissítések és támogatás ügyében látogasson el a következő oldalra: [www.act-connectivity.com](http://www.act-connectivity.com) CZ Bezpečnostní informace můžete nalézt na adrese [www.act-connectivity.com/safety](http://www.act-connectivity.com/safety) DK Du kan finde sikkerhedsoplysningerne på [www.act-connectivity.com/safety](http://www.act-connectivity.com/safety) NO Du finner sikkerhetsinformasjon på [www.act-connectivity.com/safety](http://www.act-connectivity.com/safety) SE Du hittar säkerhetsinformation på [www.act-connectivity.com/safety](http://www.act-connectivity.com/safety) FI Turvallisuustiedot löytyvät osoitteesta [www.act-connectivity.com/safety](http://www.act-connectivity.com/safety) SI Varnostne informacije so na voljo na naslovu [www.act-connectivity.com/safety](http://www.act-connectivity.com/safety) BG Информация за безопасност ще откриете на [www.act-connectivity.com/safety](http://www.act-connectivity.com/safety) GR Μπορείτε να βρείτε πληροφορίες ασφαλείας στη διεύθυνση [www.act-connectivity.com/safety](http://www.act-connectivity.com/safety) PL Informacje dotyczące bezpieczeństwa znajdują się pod adresem [www.act-connectivity.com/safety](http://www.act-connectivity.com/safety).

5 Year Warranty ACT, Koolhovenstraat 1E, 3772 MT Barneveld, The Netherlands

**Safety Instruction:**

EN For PLUGGABLE EQUIPMENT, the socket-outlet shall be installed near the equipment and shall be easily accessible

NL Zorg dat het stopcontact dichtbij en gemakkelijk bereikbaar is vanaf het apparaat FR Une prise électrique facilement accessible est nécessaire près de l'appareil IT È richiesta una presa di corrente, e pertanto è raccomandabile che questa sia nelle immediate vicinanze e facilmente raggiungibile DE Eine Steckdose wird benötigt, die in der Nähe und einfach vom Gerät aus zugänglich sein sollte ES Se necesita una toma de corriente que debe estar cerca y de fácil acceso desde el dispositivo HU Olyan konnektorra van szükégsége, mely közel van és könnyen megközelíthető az eszköz számára PT Uma tomada deve estar perto e facilmente acessível a partir de necessário o dispositivo CZ V případě zařízení, která se zapojují do elektrické zásuvky, by se měla elektrická zásuvka nacházet blízko k zařízení a být snadno přístupná DK På tilslutningsbart udstyr skal stikkkontakten være i nærheden af udstyret og den skal være let tilgængelig NO Hvis utstyret har støpsel, skal stikkkontakten monteres nært utstyret og være lett tilgjengelig SE För inkopplingsbar utrustning ska uttaget installeras nära utrustningen och vara lättåtkomligt FI Verkkovirtaan liitettävien laitteiden pistorasioiden on oltava asennettu lähelle laitetta helposti päästävään paikkaan SI Za vtično opremo je treba namestiti lahko dostopno vtično blizu opreme BG За оборудване, което се включва, контактът трябва да се намира в близост до оборудването и да е лесно достъпен GR Για εξοπλισμό με δυνατότητα σύνδεσης, η πρίζα πρέπει να εγκατασταθεί κοντά στον εξοπλισμό και να είναι εύκολα προσβάσιμη PL Dla Podłączanych urządzeń, gniazdo zasilania powinno być zainstalowane w pobliżu urządzenia i powinno być łatwo dostępne.

EN Made in China

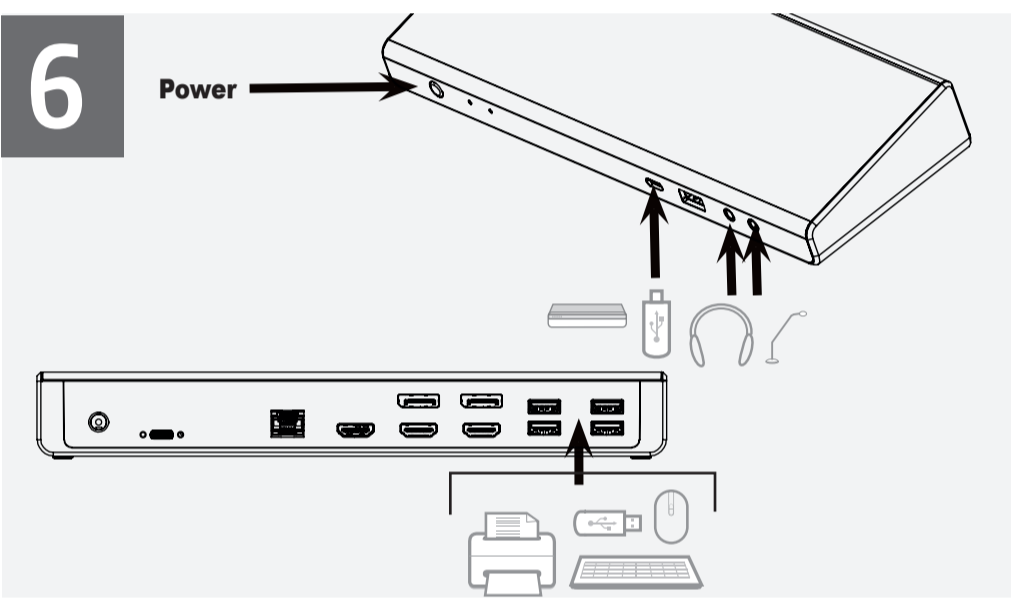
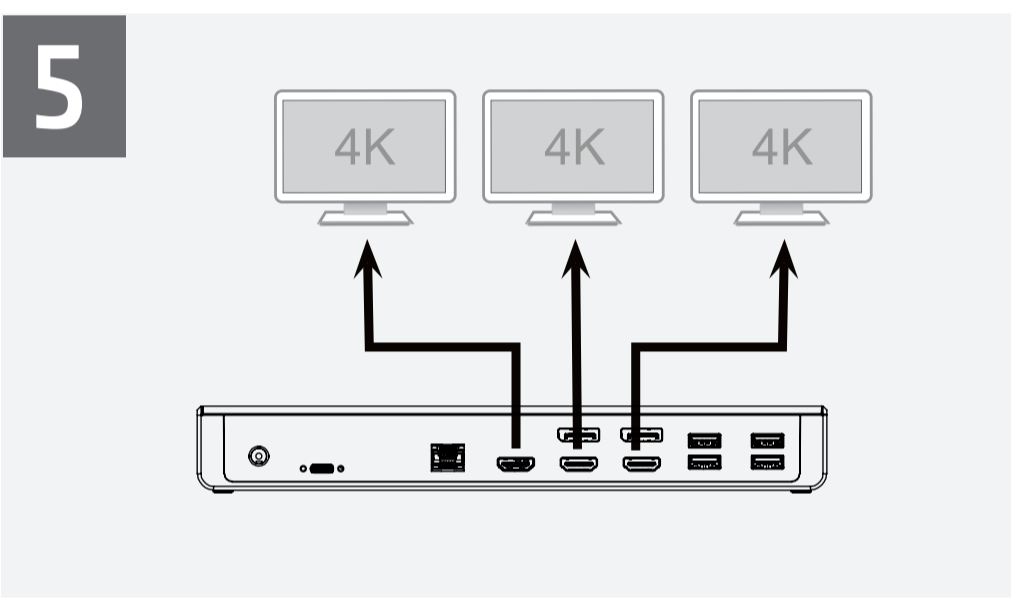
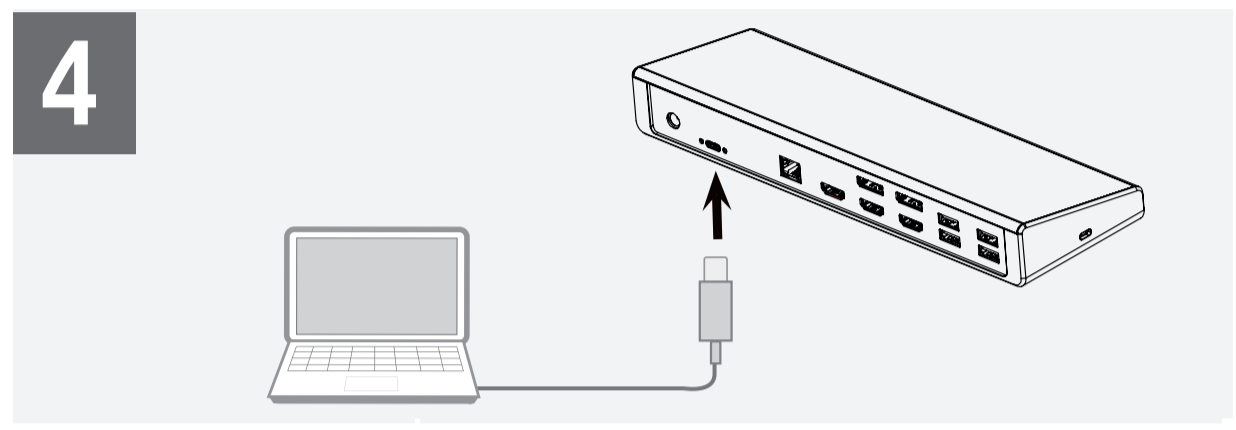
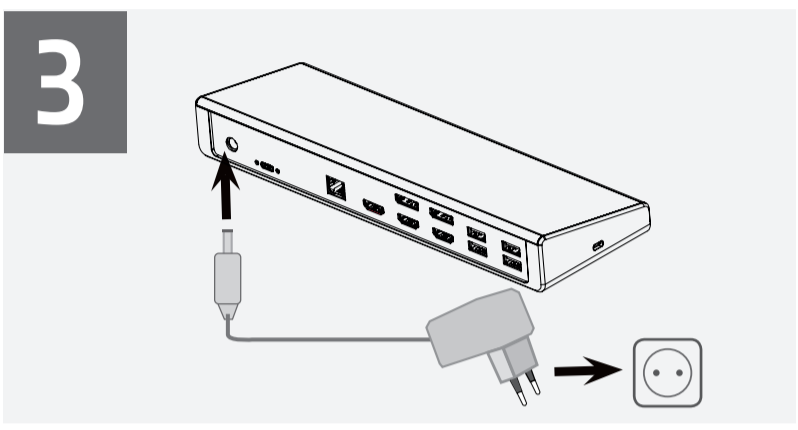
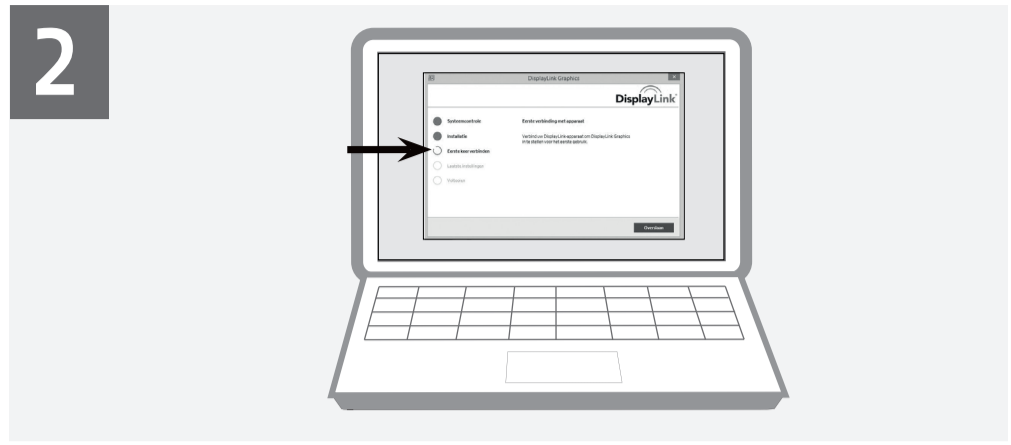
NL Geproduceerd in China FR Fabriqué en Chine IT Prodotto in Cina DE Hergestellt in China ES Hecho en China PT Fabricado na China HU Kínában készült CZ Vyrobeno v Číně DK Fremstillet i Kina NO Laget i Kina SE Tillverkad i Kina FI Valmistettu Kiinassa SI Izdelano na Kitajskem BG Произведено в Китай GR Κατασκευασμένο στην Κίνα PL Wyprodukowano w Chinach.

THE PRODUCT IS COMPLIANT WITH THE NEW STANDARD FOR ERP CERTIFICATION (EU) 2019/1782 (SOMETIMES REFERRED TO AS ECO DESIGN) OF EXTERNAL POWER ISSUED BY THE EUROPEAN UNION, REPEALING COMMISSION REGULATION(CE) NO 278/2009 FROM 1 APRIL 2020. Visit our website [www.act-connectivity.com](http://www.act-connectivity.com) for the ERP/ECO design 2019/1782/EU COMPLIANT STATEMENT. Compliant with (EU) 2009/125.

Input: 110-240V~50/60Hz, 2.37A Max.  
Power: 135.0Watt



[www.act-connectivity.com](http://www.act-connectivity.com)



**7 Notifications MacOS 11 or higher**

**8 Solution**

**1** System Preferences

**2**

**3**

**4**

**5**

**6**

**7**

**8**