

Product Overview

Joyful Laser Tumbler



Accessories



Tech Specs

Dimension (mm)	73 (L) x 73 (W) x 120 (H)
Weight (g)	190
Material	ABS
Working Voltage (V)	3
Wattage (W)	0.1-0.5

Battery

Battery Type	2 x AAA batteries (not included)
--------------	----------------------------------

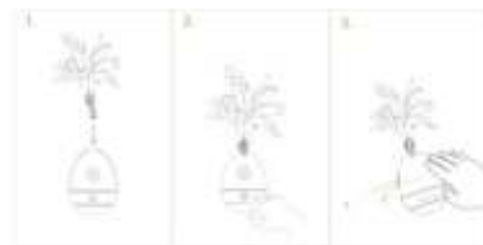
How to install batteries?

Use a screwdriver (included) to remove the screw, then insert 2 x 1.5V AAA size batteries (not included) in the battery compartment and tighten the screw.



How to start the game?

1. Choose a changeable part and plug it into the top jack.
2. Press the ON/OFF button and the laser light will be on.
3. Put the device, put it on the floor and it will rotate in auto mode. The device will go into standby mode after 40 seconds; pet to restart laser game.



NOTES

1. The device is especially designed for pets. This is not a child's toy. Please keep out of reach of children.
2. Always supervise your pet while your pet is playing. Please take away the device if it is damaged, broken or falls apart, as this may lead to undesirable injuries.
3. The toy is not washable, so please keep it away from water.
4. Check the device regularly, in case the cord is damaged and the electrical power hurts the pet (Please be careful even the working voltage is very low).
5. The safety gear designed for product protection will rattle when somebody accidentally tests the upper or lower part of toy.
6. Do not mix old and new batteries or batteries of different brands. Do not mix alkaline, standard, or rechargeable batteries. Only use batteries of same or equivalent type as recommended. Do not use rechargeable batteries.
7. Insert batteries with the correct polarity and always follow the

Enjoy the fun of chasing!

PETGEEK

Joyful Laser Tumbler

manufacturer's instructions.

- 8. Reuse batteries if product will be stored for an extended period.
- 9. Dispose of used batteries responsibly.

Joyful Laser Tumbler

User Manual