

5. Long press the first switch again until "C" displays and flashes, then you can short press to change for temperature. (This function can only be available with the temperature sensing head)

6. The set-up mode will be exited automatically after 3 second without operation. The set-up of time and temperature is finished.

Function of second switch:

Short press is to recycle "Warm light-cold light-Off light", long press is for continuous color temperature adjustment.

● D1) Triple Switches+Anti-fog+Adjustable Brightness+Adjustable Color

First switch: ON-OFF of Anti-fog. It will be power on once the current is switched on. It will be turned off automatically after heating for 30 minutes.

Second switch: ON-OFF+Adjustable Brightness: Short press is for ON-OFF, long press is for brightness adjustment (adjustable range: 5%-100%).

Third switch: Adjustable color temperature: short press to recycle the color of cold white, neutral white to warm white. (color temperature adjustable range: 3000K-4000K-6000K)

● E1) Six Switches+Anti-Frog+Adjustable Brightness+Adjustable Color+Time +Temperature+Bluetooth

First switch: A. Long press 3 seconds for ON-OFF. B. Short press can turn on/off the Anti-fog & brightness at the same time.

Second switch: A. Long press 3 seconds to switch Bluetooth mode, music mode(Only available with the U-key) and the time mode. B. Short press for playing or pausing music when it's in Bluetooth mode or music mode. C. Short press to time set-up when it's in time mode.

Third switch: A. Short press to decrease volume and long press to switch to the next song when it's in Bluetooth mode. B. Short press to deduct hour/minute when it's in time mode.

Fourth switch: A. Short press to increase volume and long press to switch to the previous song when it's in Bluetooth mode. B. Short press to add hour/minute when it's in time mode.

Fifth switch:

1. Color temperature adjustment: brightness is off when the power is on, Line A (white light of 6000K) will be on after first short pressing, Line A (white light of 6000K) and Line B (warm light of 3000K) will be on at the same time after second short pressing; Only Line B (warm light of 3000K) will be on after third short pressing; LED light will be off after fourth short pressing.

2. Brightness adjustment: the brightness can be adjusted by long pressing the fifth switch after the LED light is on, the adjustment sequence is 100%-10%-100%. Touch again to restore the same brightness and color temperature of last off state as long as they can stay more than 10 seconds before off.

Sixth switch: ON-OFF for Anti-fog.

● E2) Six Switches+Anti-Frog+Adjustable Brightness+Adjustable Color+Date & Time+Temperature+ Bluetooth

First switch: A. Long press 3 seconds for ON-OFF. B. Short press can turn on/off the Anti-fog & brightness at the same time.

Second switch: A. Long press 3 seconds to switch Bluetooth mode, music mode(Only available with the U-key) and the time mode. B. Short press for playing or pausing music when it's in Bluetooth mode or music mode. C. Short press to time set-up when it's in time mode.

Third switch: A. Short press to decrease volume and long press to switch to the next song when it's in Bluetooth mode. B. Short press to deduct hour/minute when it's in time mode.

Fourth switch: A. Short press to increase volume and long press to switch to the previous song when it's in Bluetooth mode. B. Short press to add hour/minute when it's in time mode.

Fifth switch:

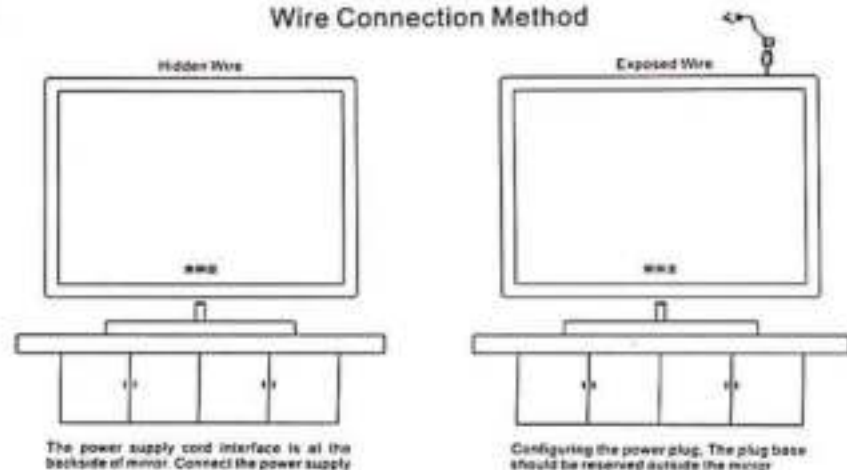
1. Color temperature adjustment: brightness is off when the power is on, Line A (white light of 6000K) will be on after first short pressing, Line A (white light of 6000K) and Line B (warm light of 3000K) will be on at the same time after second short pressing; Only Line B (warm light of 3000K) will be on after third short pressing; LED light will be off after fourth short pressing.

2. Brightness adjustment: the brightness can be adjusted by long pressing the fifth switch after the LED light is on, the adjustment sequence is 100%-10%-100%. Touch again to restore the same brightness and color temperature of last off state as long as they can stay more than 10 seconds before off.

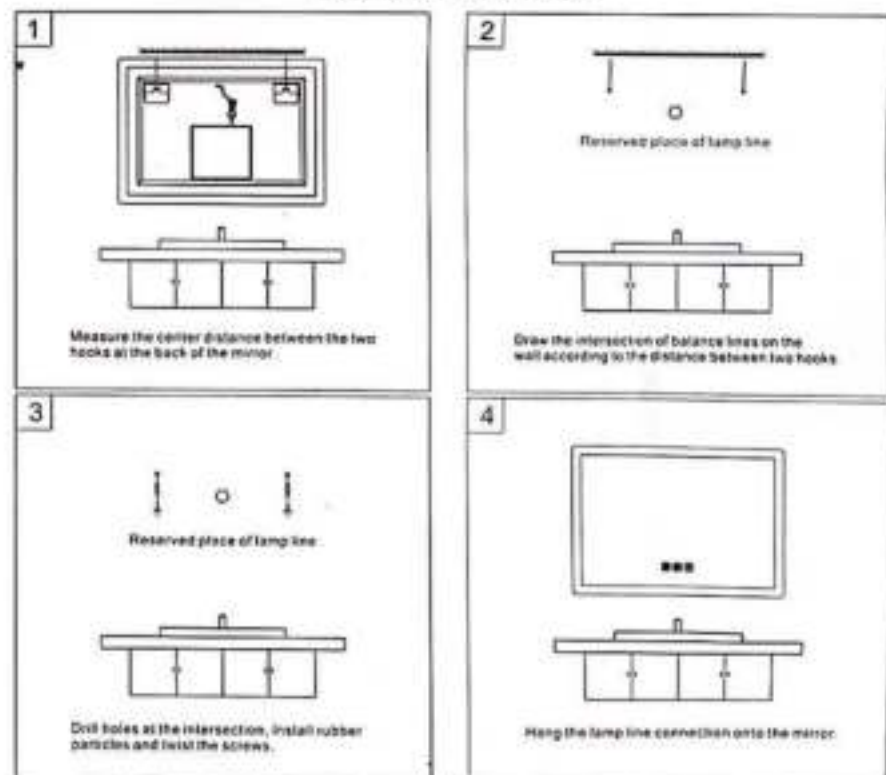
Sixth switch: ON-OFF for Anti-fog.

Installation Instruction

Wire Connection Method



Installation Procedure



Remark: Hidden wire are suggested on Y01/Y02/Y05/Y06/Y07 series for aesthetic.

Instruction for bathroom led mirror switch

No.	Switch Icon	Function code	Remark
1		A1/B1	Square mirror
2		A2/B2	Square mirror
3		C1	Square mirror
4		C2	Square mirror
5		D1	Square mirror
6		A1/B1	Round mirror
7		A2/B2	Round mirror
8		C1	Round mirror
9		D1	Round mirror
10		B3	Round/Square mirror
11		C3	Round/Square mirror
12		C1	Round/Square mirror
13		E1	Round/Square mirror
14		E2	Round/Square mirror

● A1) Single Switch+Adjustable Brightness

ON-OFF+Adjustable Brightness: Short press is for ON-OFF, long press is for brightness adjustment(adjustable range: 10%-100%). Stop touching when the brightness is adjusted to the certain level, the brightness remains unchanged. The LED light can be turned-off for short press, short press again to restore the same brightness of last off state.

● A2) Single Switch+Adjustable Color

ON-OFF+Adjustable color temperature: Short press is for ON-OFF, long press is for color temperature adjustment (adjustable range: 3000K-4000K-6000K). Stop touching when the color temperature is adjusted to the certain level, the color remains unchanged. The LED light can be turned-off for short press, short press again to restore the same color temperature of last off state.

● B1) Single Switch+Adjustable Brightness+Anti-fog

ON-OFF+Adjustable Brightness: Short press is for ON-OFF, long press is for brightness adjustment(adjustable range: 10%-100%). Stop touching when the brightness is adjusted to the certain level, the brightness remains unchanged. The LED light can be turned-off for short press, short press again to restore the same brightness of last off. Short press can synchronous control anti-fog function.

● B2) Single Switch+Adjustable Color+Anti-fog

ON-OFF+Adjustable color temperature: Short press is for ON-OFF, long press is for color temperature adjustment (adjustable range: 3000K-4000K-6000K). Stop touching when the color temperature is adjusted to the certain level, the color remains unchanged. The LED light can be turned-off for short press, short press again to restore the same color temperature of last off. Short press can synchronous control anti-fog function.

● B3) Single Switch+temperature+time

1. Short press is for ON-OFF.
2. Long press 4 seconds will be SET-UP mode: When "24H" displays and flashes on the digital tube, you can short press to switch to 24-hour system or 12-hour system.
3. Long press the switch again until the hour position displays and flashes, then you can short press to adjust the HOUR.
4. Long press the switch again until the minute position displays and flashes, then you can short press to adjust the MINUTE.
5. Long press the switch again until "C" displays and flashes, then you can short press to change for temperature. (This function can only be available with the temperature sensing head)
6. The set-up mode will be exited automatically after 3 second without operation. The set-up of time and temperature is finished.

● C1) Double Switches+Adjustable Brightness+Anti-fog

First switch is for the Anti-fog ON-OFF

Second switch: ON-OFF+Adjustable Brightness: Short press is for ON-OFF, long press is for brightness adjustment(adjustable range: 10%-100%). Stop touching when the brightness is adjusted to the certain level, the brightness remains unchanged. The LED light can be turned-off for short press, short press again to restore the same brightness of last off state.

● C2) Double Switches+Adjustable Color+Anti-fog

First switch is for the Anti-fog ON-OFF

Second switch: ON-OFF+Adjustable color temperature: Short press is for ON-OFF, long press is for color temperature adjustment (adjustable range: 3000K-4000K-6000K). Stop touching when the color temperature is adjusted to the certain level, the color remains unchanged. The LED light can be turned-off for short press, short press again to restore the same color temperature of last off.

● C3) Double Switches+Anti-Fog+Temperature+Time+Adjustable Brightness

Function of first switch:

1. Short press for ON/OFF of Anti-Fog
2. Long press first switch 4 seconds will be SET-UP mode When "24H" displays and flashes on the digital tube, you can short press to switch to 24-hour system or 12-hour system.
3. Long press the first switch again until the hour position displays and flashes, then you can short press to adjust the HOUR.
4. Long press the first switch again until the minute position displays and flashes, then you can short press to adjust the MINUTE.
5. Long press the first switch again until "C" displays and flashes, then you can short press to change for temperature. (This function can only be available with the temperature sensing head)
6. The set-up mode will be exited automatically after 3 second without operation. The set-up of time and temperature is finished.

Function of second switch:

Short press is for ON-OFF, long press is for brightness adjustment(adjustable range: 10%-100%). Stop touching when the brightness is adjusted to the certain level, the brightness remains unchanged. The LED light can be turned-off for short press, short press again to restore the same brightness of last off.

● C4) Double Switches+Anti-Fog+Temperature+Time+Adjustable Color

Function of first switch:

1. Short press for ON/OFF of Anti-Fog
2. Long press first switch 4 seconds will be SET-UP mode:When "24H" displays and flashes on the digital tube, you can short press to switch to 24-hour system or 12-hour system.
3. Long press the first switch again until the hour position displays and flashes, then you can short press to adjust the HOUR.
4. Long press the first switch again until the minute position displays and flashes, then you can short press to adjust the MINUTE.