

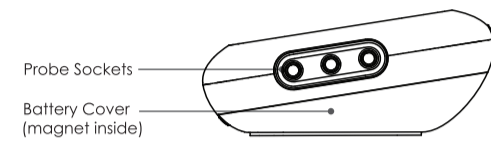
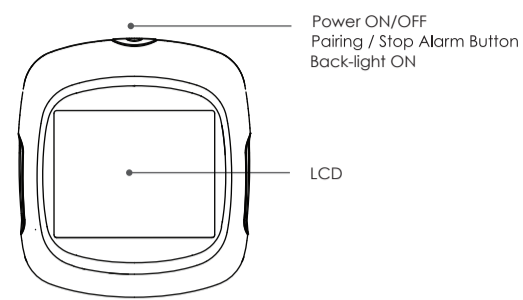
USER MANUAL

FOR

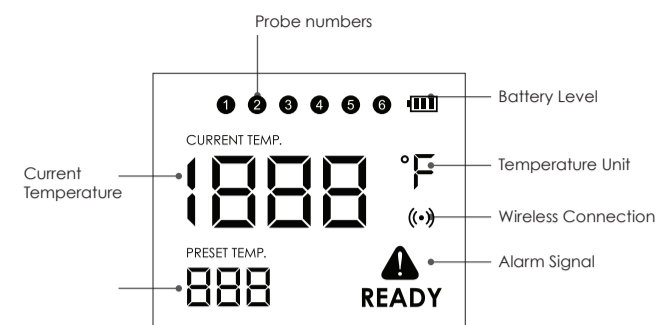
EasyBBQ pro

Smart wireless thermometer

Get to know the Device



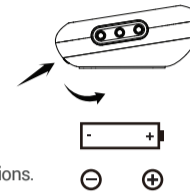
The device provides 6 sockets for probes, which enable you monitor 6 items at once. If you need more probes besides these 2 probes in the standard package, standard package can be purchased separately.



Put in the Battery

2 AA size batteries are needed for this device. Make sure they are put in the right direction by following the icons on the unit.

- 1 Press the lock of the battery cover and rotate to open.
- 2 Put in batteries, noticing the icons which shows directions.
- 3 Put back the battery cover.



Install the probes

Up to 6 EasyBBQ probes can be plugged into the EasyBBQ pro. The EasyBBQ will not work properly with probes from a different seller. The device will keep scanning all ports for new probes as long as it is turned on. The probe number and its temperature value will be displayed on the LCD screen one by one.

Download the EasyBBQ app

Download and install the easybbq app from the Appstore or Google Play store.

The app is compatible with the following devices:

- iPhone 4S or later models
- iPod touch 5th generation
- iPad 3rd generation or later models
- All iPad minis
- All Android devices running version 4.3 or later, with Bluetooth 4.0 module



EasyBBQ app



App Store is a service mark of Apple Inc.
Google Play is a service mark of Google Inc.

Power ON/OFF

To turn on the thermometer press and hold the on/off button located at the top of the thermometer for more than 3 seconds until the screen shows 'ON'.

Do the same to turn the thermometer off. When there is no probe plugged into the device it will be powered off automatically after some minutes.

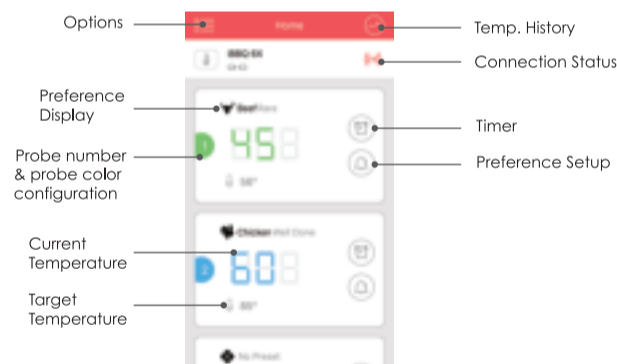
Pair EasyBBQ pro with your phone

- 1 Switch on the EasyBBQ pro
- 2 Turn on Bluetooth on your phone or other device
- 3 Launch the EasyBBQ app and follow the instructions in the app to pair and activate the EasyBBQ pro thermometer

Once paired you don't need to do it again unless you want to use a different device.

Enjoy your BBQ time

This is where you'll select preset grill times for different food types or set your own. EasyBBQ will tell you the actual temperatures and check progress within the temperature graphs. This way you can simultaneously track up to six pieces of food doneness. To make it even easier you can set up grilling notifications and take advantage of everything else the smart EasyBBQ app has to offer.



Warning

The included probes are NOT dishwasher safe.

