

2024.10

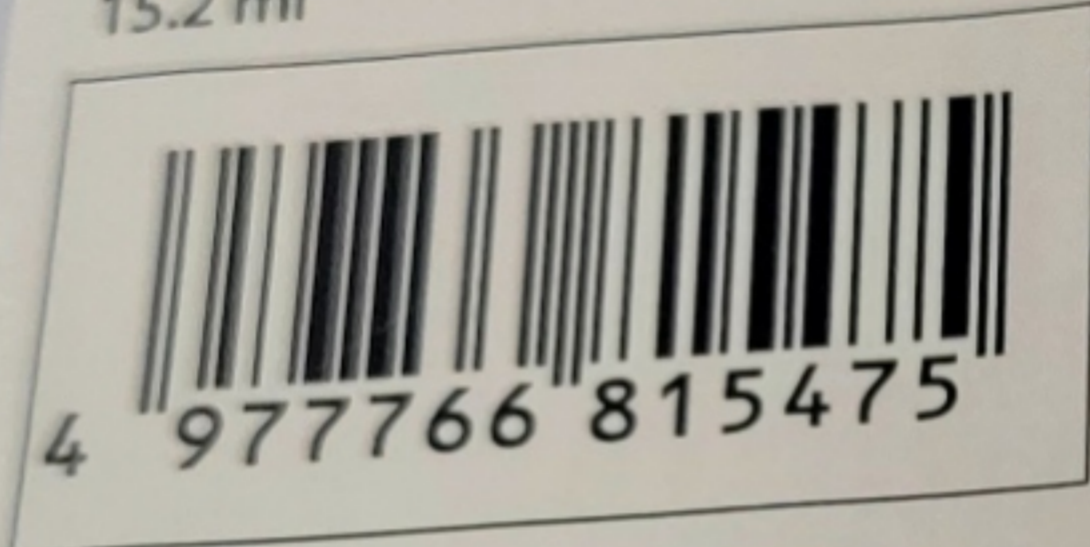
Brother Original Support  
Brother Original Parts  
Consigliato Brother  
Compartimenti originali Brother  
Compartimenti originali Brother  
Compartimenti originali Brother

Made in Philippines  
Hergestellt aus den Philippinen  
Fabrique aux Philippines  
Reproduced in the Philippines  
Prodotto nelle Filippine  
Fabricado en Filipinas / Fabricado nas Filipinas

Contiene 1,2-benzisotiazoli  
produce an allergic reactie  
benzisotiazol-3(2H)-one. K  
Reaktionen hervorrufen. / C  
benzisotiazol-3(2H)-one. F  
réaction allergique. / Bevat  
(2H)-one. Kan een allergie  
veroorzaken. / Contiene 1,2-  
one. Può provocare una reazione allergica. /  
Contiene 1,2-benzisotiazol-3(2H)-one. Puede  
provocar una reacción alérgica. / Contém 1,2-  
benzisotiazol-3(2H)-one. Pode provocar uma  
reação alérgica.

\*Approx. cartridge yield is declared in accordance  
with ISO/IEC 24711. For more page yield  
information, see [www.brother.com/pageyield](http://www.brother.com/pageyield)

15.2 ml



**BROTHER INDUSTRIES, LTD.**

15-1 Naeshiro-cho, Mizuho-ku, Nagoya,  
467-8561, Japan

**BROTHER INTERNATIONAL EUROPE LTD.**

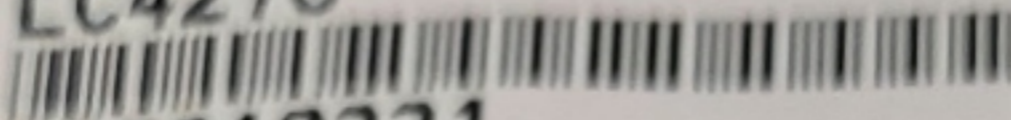
Brother House, 1 Tame Street,  
Audenshaw, Manchester M34 5JE, U.K.  
TEL: +44 (0) 161 931 4820  
<http://sds.brother.co.jp/sdsapp/>

**BROTHER INTERNATIONAL (NEDERLAND) B.V.**

Zanderij 25, 1185 ZM Amstelveen,  
The Netherlands

**LC-427C CYAAN**

LC427C



662310331

**BROTHER**

Earth

[www.brotherearth.eu](http://www.brotherearth.eu)



40°C  
104°F



**UK  
CA**

