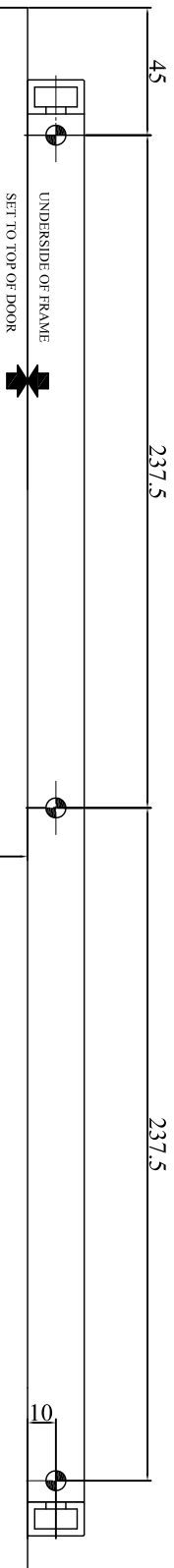
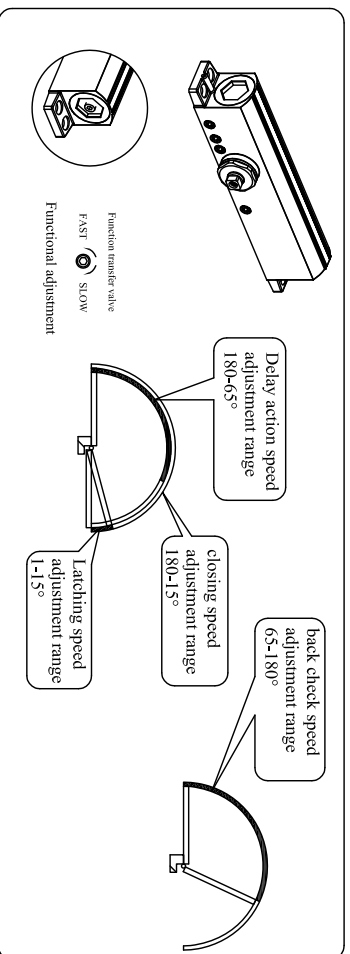
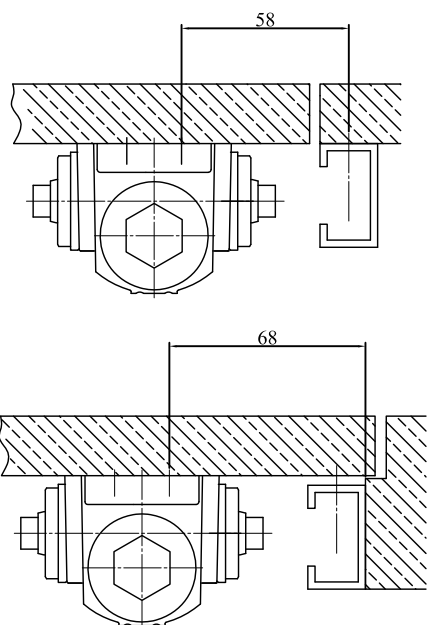


9024 (Push Side) Slide Track Installation



- Functional adjust valve
- No.1 latching speed adjustment
 - No.2 closing speed adjustment
 - No.3 delay action speed adjustment
 - No.4 back check speed adjustment



bottom hole	Ø3.2	Ø4.2
Mounting screws	ST4.8	M5

1

According to the chart, drilled the corresponding screw holes in the door and frame.

2

According to schematic diagram, fixed the slide, assembled and installed the body, arms and other parts.

3

According to schematic diagram after connecting, fix main body in the corresponding.

4

Schematic diagram after installation

5

Hold open angle adjustment

1. Mesh the Parts A and B;
2. Use angle inside the door panel hand loosen setting screws;
3. Open the door to the desired angle;
4. Tighten set screws, can complete hold open angle set.

No hold open angle adjustment
Need not tighten setting screws.