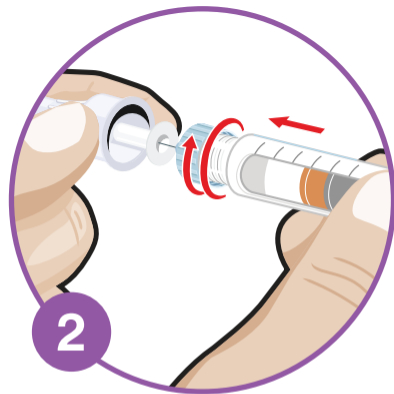


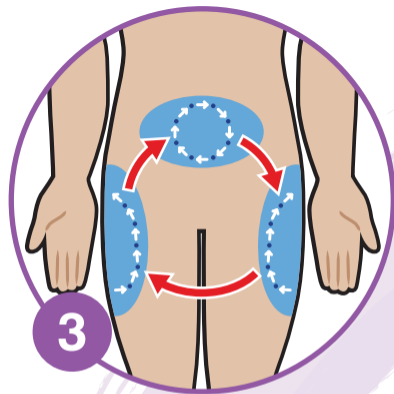
# Good Injection Guide



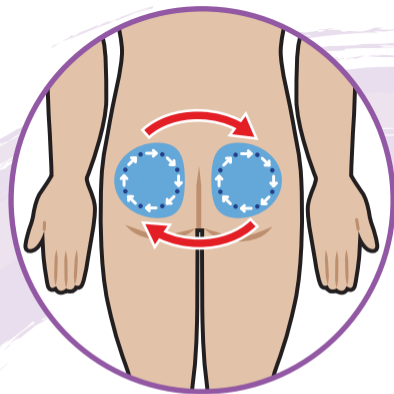
First wash your hands with soap and water.

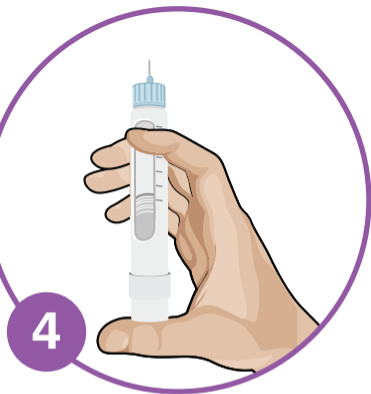


Attach a new needle onto the pen, then remove the shields.

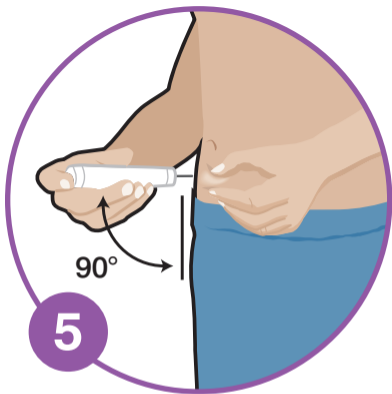


Make sure you rotate between injection sites.

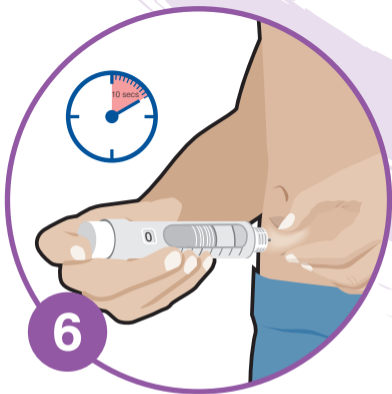




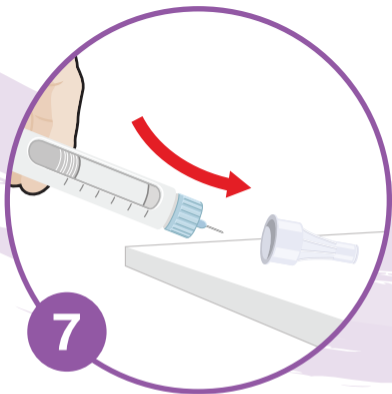
4 Prime your pen as recommended and dial the required dose.



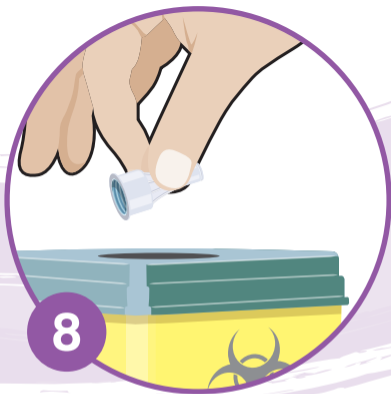
5 If recommended, pinch/fold your skin and insert the needle at a 90° angle.



6 Push the button down completely. Keep the button pressed down, count slowly to 10 before removing.



7 Carefully replace the outer cap.



8 Dispose of the needle in a suitable sharps container.

GIG-10PP-LT/MCC/0817/04