

Sharkoon

QUICKSTORE PORTABLE

Manual



Content

1. Features
2. Specifications
3. Parts and accessory
4. The device at a glance
5. Installing a SATA hard disk drive
6. The backup software
 - 6.1 Installation
 - 6.2 The user interface
 - 6.2.1 The backup window (data backup)
 - 6.2.2 The restore window (data recovery)
 - 6.2.3 The schedule window (time schedule)
 - 6.2.4 The setting window (configuration)

Dear customer!

Congratulations for purchasing this premium quality SHARKOON product.

For a long life time and to take full advantage of this product we recommend that you read this manual completely.

Have a good time with our product!

SHARKOON Technologies GmbH

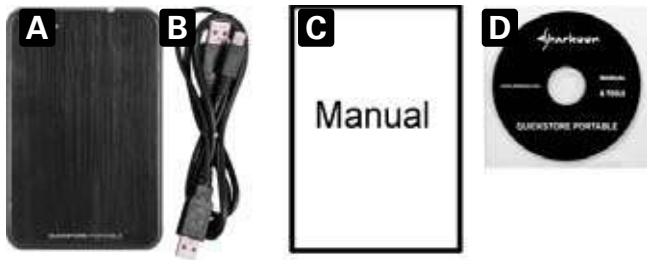
1. Features

- Suitable for 2.5" SATA hard disk drives (9.5 mm height)
- Compact case in pocket size
- Tool free assembly
- Fold-out USB connector
- "One Click Backup" function (only Windows)
- Backup software included
- No drivers needed for Windows, Mac and Linux

2. Specifications

- External interface: USB2.0 (compatible to USB1.x)
- Internal interface: SATA (Version I and II)
- Data transfer rate: max. 480 Mbit/s
- Dimensions: 135 x 85 x 14 mm (L x W x H)
- Weight: ~51 g

3. Parts and accessory



- QuickStore Portable (A)
- USBY cable (B)
- Quick start manual (C)
- Tools CD incl. backup software and extensive manual (PDF / D)

Note:

If you are missing any of the items listed above, please contact our customer service via e-mail at support@sharkoon.com or call: + 49 (0) 6403 – 775 6100.

4. The device at a glance



A – QuickStore Portable with black aluminum cover

B – QuickStore Portable with mirrored metal cover

C – Backup button: pressing this button starts a backup process with the pre-defined settings (see chapter 6)



A – Case cover lock



A – USB plug in its detent

B – Case cover



A – SATA connector (data and power)

B – HDD mounting bay (for one 2.5"-SATA HDD)

5. Installing a SATA hard disk drive

1. Open the case cover lock (fig. 1).



fig. 1

2. Remove the case cover from the case body (fig. 2).

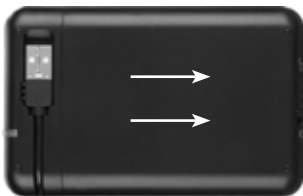


fig. 2

3. Slide a 2.5" SATA HDD into the HDD mounting bay (fig. 3).



fig. 3

4. Place the case cover back onto the case body (fig. 4).



fig. 4

5. Close the lock (fig. 5).



fig. 5

6. Fold-out the USB plug from its detent (fig. 6) and connect it to a USB connector of your PC/laptop.



fig. 6

7. The QuickStore Portable will automatically be recognized by the operating system and all required drivers will be installed. The device is now ready.

Note:

1. *By specification USB ports provide 500 mA current which is enough to operate most 2.5" hard disk drives. In case your HDD requires more than 500 mA current you need to connect the included USBY cable to assure a stable power supply.*
2. *Brand new HDDs built into the case must be partitioned and formatted. Proceed as described below (e.g. Windows XP): Start / Settings / Control Panel / Administrative Tools / Computer Management / Disk Management. Click the respective HDD with the right mouse button and choose partition/format.*

6. The backup software

6.1 Installation (Windows for example)

1. Put the included Tools CD into your CD/DVD drive.
2. In the Windows Explorer open the directory on the Tools CD "SHARKOON" with a double click (left mouse button).
3. Double click (left mouse button) "Setup.exe"; a language selection window will open up. Select the desired language and confirm with "OK".

The installation routine will commence (fig. 1).



fig. 1

4. Confirm the copyright note in the next window (fig. 2) with "Next" or "Cancel" the installation process.



fig. 2

- Click "Install" in the next window (fig. 3) to install the backup software. "Back" will bring you to the previous window, "Cancel" ends the installation process.

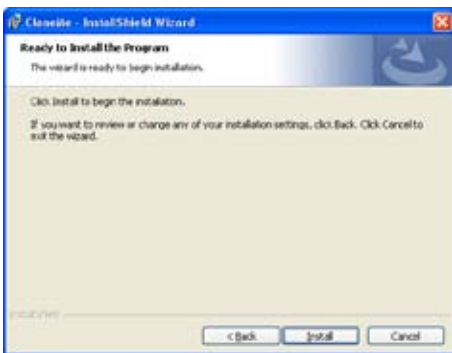


fig. 3

- The backup software will be installed to your system (fig. 4).

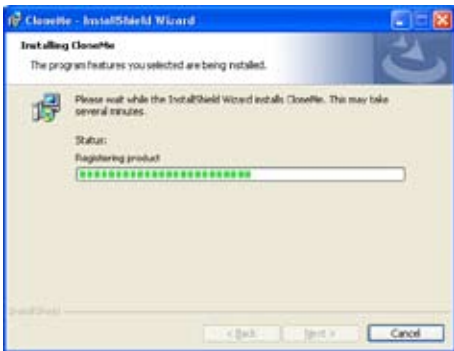


fig. 4

7. Complete the installation procedure by left clicking “Finish” (fig. 5).



fig. 5

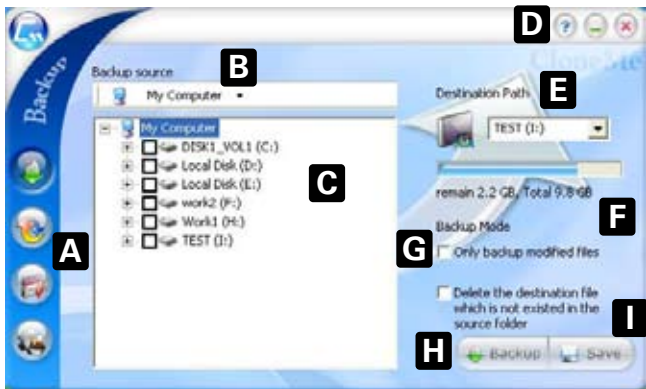
8. After finishing the installation process successfully the following icon will appear on your desktop:



To start the backup software double click (left mouse button) this icon.

6.2 The user interface

6.2.1 The backup window (data backup)



- A – Activate the windows “Backup” (data backup), “Restore” (data recovery), “Schedule” (time schedule) and “Setting” (configuration) by left clicking the respective button.
- B – Source directory for data backup.
- C – Box displaying the source directory’s content. Activating the check boxes adds the folder(s) to the backup schedule, deactivating the check boxes will exclude the folder(s) from the backup schedule.
- D – Buttons for “Help” (?), “Minimize window” (_) and “Close window” (X).
- E – Target directory for data backup.
- F – Info showing remaining and total size of the backup files.
- G – Backup mode:
 - “Only backup modified files” includes only files which have been changed since the last backup;
 - “Delete the destination file” erases files inside the target directory which are no longer present in the source directory.

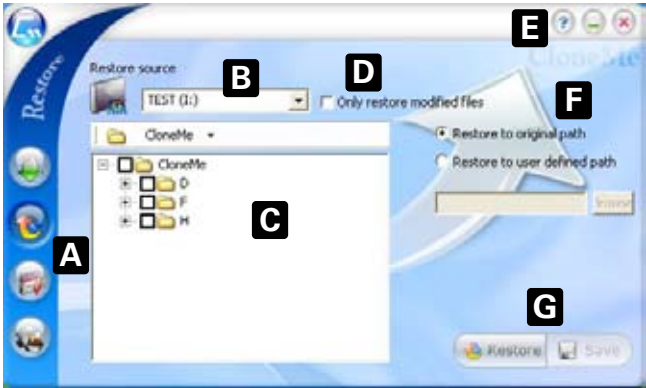
- H - "Backup" starts the backup with the defined settings. After finishing the backup the following confirmation will pop up:



Click "Close" to close this window and return to the backup program or left click "Log File" to view the backup log.

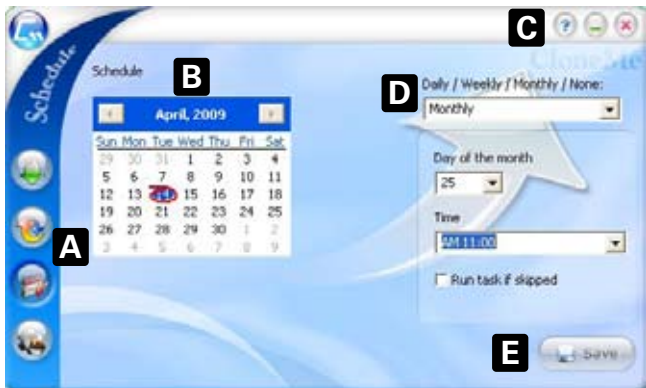
- I - Click "Save" to save your settings (confirm the following pop-up with "Yes" or choose "No" to cancel).

6.2.2 The restore window (data recovery)



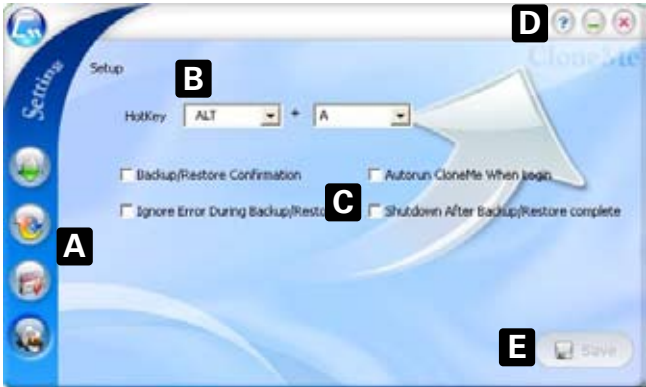
- A – Activate the windows “Backup” (data backup), “Restore” (data recovery), “Schedule” (time schedule) and “Setting” (configuration) by left clicking the respective button.
- B – Source directory for data recovery.
- C – Box displaying the content of the selected directory. Activating the check boxes adds the folder(s) to the restore schedule, deactivating the check boxes will exclude the folder(s) from the restore schedule.
- D – Activate/Deactivate the option „Only restore modified files“ to only recover files that have been changed in the meantime.
- E – Buttons for “Help” (?), “Minimize window” (_) and “Close window” (X).
- F – Select “Restore to original path” (keeping the original folder structure) or “Restore to user defined path” (using a custom path).
- G – Click „Restore“ to commence the restore procedure or “Save” to save your settings (confirm the following pop-up with “Yes”, “No” to cancel).

6.2.3 The schedule window (time schedule)



- A – Activate the windows “Backup” (data backup), “Restore” (data recovery), “Schedule” (time schedule) and “Setting” (configuration) by left clicking the respective button.
- B – Left clicking the respective calendar date defines a special day to backup your data. Selected calendar dates are marked in blue, red marks the current day.
- C – Buttons for “Help” (?), “Minimize window” (_) and “Close window” (X).
- D – Decide whether the backup shall be performed daily, weekly or monthly. If you do not want to define a recurring date choose “None”.
- E – Click “Save” to save your settings (confirm the following pop-up with “Yes”, “No” will cancel).

6.2.4 The setting window (configuration)



- A – Activate the windows “Backup” (data backup), “Restore” (data recovery), “Schedule” (time schedule) and “Setting” (configuration) by left clicking the respective button.
- B – Define a „HotKey“ to launch the backup software directly.
- C – By activating/deactivating the check boxes select/deselect the following options:
 1. “Backup/Restore Confirmation”: defines whether or not you will receive a confirmation after a successful backup/restore procedure;
 2. “Ignore Error During Backup/Restore”: ignores all errors occurring during the backup/restore process;
 3. “Autorun CloneMe When Login” starts the backup program during your operating system’s start;
 4. “Shutdown After Backup/Restore complete” shuts down your computer after successfully completing a backup/restore procedure.
- D – Buttons for “Help” (?), “Minimize window” (_) and “Close window” (X).
- E – Click “Save” to save your settings (confirm the following pop-up with “Yes”; “No” will cancel).

Warning:

For potential loss of data, especially due to inappropriate handling, SHARKOON assumes no liability.

All named products and descriptions are trademarks and/or registered trademarks of the respective manufacturers and are accepted as protected.

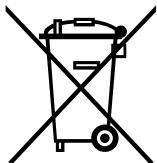
As a continuing policy of product improvement at SHARKOON, the design and specifications are subject to change without prior notice. National product specifications may vary.

The legal rights of the enclosed software belong to the respective owner. Please observe the license terms of the manufacturer before using the software.

All rights reserved especially (also in extracts) for translation, reprinting, reproduction by copying or other technical means. Infringements will lead to compensation.

All rights reserved especially in case of assignation of patent or utility patent. Means of delivery and technical modifications reserved.

Disposal of your old product



Your product is designed and manufactured with high quality materials and components, which can be recycled and reused. When this crossed-out wheeled bin symbol is attached to a product, it means the product is covered by the European Directive 2002/96/EC.

Please be informed about the local separate collection system for electrical and electronic products.

Please act according to your local rules and do not dispose of your old products with your normal household waste. The correct disposal of your old product will help prevent potential negative consequences to the environment and human health.

© **SHARKOON Technologies GmbH 2009**

www.sharkoon.com