


TEST REPORT
EN 62368-1**Audio/video, information and communication technology equipment****Part 1: Safety requirements**

Report reference No.	22ZCTB1029008SP
Tested by..... (printed name and signature)	Wilson Wei
Reviewer by..... (printed name and signature)	Jack yang
Approved by..... (printed name and signature)	Tomy Wu
Date of issue.....	2022-11-02
Total number of pages	57 pages
Testing laboratory	ShenZhen ZCT Technology Co., Ltd.
Address.....	3F, 5th Building, Hongsheng Industrial Zone, No.4336 Bao'an Road, Bao'an District, Shenzhen, China.
Test location.....	Same as above
Applicant.....	Witter Technology (Shenzhen) Co., LTD
Address:.....	Floor 3, Baozhou Industrial Complex, No.588, Zhoushi Road, Jiuwei Community, Hangcheng Street, Bao 'an District, Shenzhen
Manufacturer.....	Witter Technology (Shenzhen) Co., LTD
Address:.....	Floor 3, Baozhou Industrial Complex, No.588, Zhoushi Road, Jiuwei Community, Hangcheng Street, Bao 'an District, Shenzhen
Standards.....	EN 62368-1:2014+A11:2017
Test Procedure	IEC
Non-standard test method.....	N/A
Type of test equipment	The charger
Trade mark.....	---
Model/Type designation.....	PD-100W, WT-100W, SDC-100W
Rating.....	Input: AC100-240V 50-60Hz 2A Output:



	PD1: 5V $\overline{\text{---}}$ 3A 9V $\overline{\text{---}}$ 3A 12V $\overline{\text{---}}$ 2A 15V $\overline{\text{---}}$ 3A 20V $\overline{\text{---}}$ 5A PD2: 5V $\overline{\text{---}}$ 3A 9V $\overline{\text{---}}$ 3A 12V $\overline{\text{---}}$ 2.5A 15V $\overline{\text{---}}$ 2A 20V $\overline{\text{---}}$ 1.5A USB1: 5V $\overline{\text{---}}$ 3A 9V $\overline{\text{---}}$ 2A 12V $\overline{\text{---}}$ 1.5A USB2: 5V $\overline{\text{---}}$ 3A 9V $\overline{\text{---}}$ 2A 12V $\overline{\text{---}}$ 1.5A PD1+PD2:65W+30W; PD2+USB1+USB2: 5V $\overline{\text{---}}$ 3A
TRF originator.....:	--
Copyright blank test report:	---
Test item particulars:	N/A
Operating Condition	Continuous
Tested for IT power systems	No
IT testing, phase-phase voltage (V)	N/A
Class of equipment	Class II equipment
Protection against ingress of water	IPX0

List of Attachments (including a total number of pages in each attachment):	
Attachment 1: Photo documentation	
Summary of testing:	
Tests performed (name of test and test clause):	

<p>Copy of marking plate(s):</p> <div style="border: 1px solid black; padding: 10px; margin: 10px 0;"> <p>Power Adapter Model: PD-100W Input: AC100-240V 50-60Hz 2A Output: PD1: 5V$\overline{\text{---}}$3A 9V$\overline{\text{---}}$3A 12V$\overline{\text{---}}$2A 15V$\overline{\text{---}}$3A 20V$\overline{\text{---}}$5A PD2: 5V$\overline{\text{---}}$3A 9V$\overline{\text{---}}$3A 12V$\overline{\text{---}}$2.5A 15V$\overline{\text{---}}$2A 20V$\overline{\text{---}}$1.5A USB1: 5V$\overline{\text{---}}$3A 9V$\overline{\text{---}}$2A 12V$\overline{\text{---}}$1.5A USB2: 5V$\overline{\text{---}}$3A 9V$\overline{\text{---}}$2A 12V$\overline{\text{---}}$1.5A PD1+PD2:65W+30W; PD2+USB1+USB2: 5V$\overline{\text{---}}$3A</p>  <p>Witter Technology (Shenzhen) Co., LTD</p> </div> <p>1. The CE marking and WEEE symbol (if any) should be at least 5.0mm and 7.0mm respectively in height.</p>
--



Pollution degree (PD)	<input type="checkbox"/> PD 1 <input checked="" type="checkbox"/> PD 2 <input type="checkbox"/> PD 3
Manufacturer's specified maximum operating ambient:	N/A
IP protection class	<input checked="" type="checkbox"/> IPX0 <input type="checkbox"/> IP__
Power Systems	<input checked="" type="checkbox"/> TN <input type="checkbox"/> TT <input type="checkbox"/> IT - __V
Altitude during operation (m)	<input checked="" type="checkbox"/> 2000 m or less <input type="checkbox"/> 5000 m
Altitude of test laboratory (m)	<input checked="" type="checkbox"/> 2000 m or less <input type="checkbox"/> _____ m
Mass of equipment (kg)	<input checked="" type="checkbox"/> <7 kg

POSSIBLE TEST CASE VERDICTS:	
- test case does not apply to the test object.....	N/A
- test object does meet the requirement.....	P (Pass)
- test object does not meet the requirement.....	F (Fail)
TESTING:	
Date of receipt of test item.....	2022-10-12
Date (s) of performance of tests.....	2022-10-12-to-2022-10-25
GENERAL REMARKS:	
<p>The test results presented in this report relate only to the object tested.</p> <p>This report shall not be reproduced, except in full, without the written approval of the Issuing testing laboratory.</p> <p>"(see Enclosure #)" refers to additional information appended to the report.</p> <p>"(see appended table)" refers to a table appended to the report.</p> <p>Throughout this report a <input type="checkbox"/> comma / <input checked="" type="checkbox"/> point is used as the decimal separator.</p>	
Name and address of factory (ies).....	
GENERAL PRODUCT INFORMATION:	
Specified maximum ambient temperature is 40°C.	



ENERGY SOURCE IDENTIFICATION AND CLASSIFICATION TABLE:	
<p>(Note 1: Identify the following six (6) energy source forms based on the origin of the energy.)</p> <p>(Note 2: The identified classification e.g., ES2, TS1, should be with respect to its ability to cause pain or injury on the body or its ability to ignite a combustible material. Any energy source can be declared Class 3 as a worse case classification e.g. PS3, ES3.</p>	
<p>Electrically-caused injury (Clause 5):</p> <p>(Note: Identify type of source, list sub-assembly or circuit designation and corresponding energy source classification)</p> <p>Example: Input: +5Vdc. ES1</p>	
Source of electrical energy	Corresponding classification (ES)
All components	ES1
<p>Electrically-caused fire (Clause 6):</p> <p>(Note: List sub-assembly or circuit designation and corresponding energy source classification)</p> <p>Example: Battery pack (maximum 85 watts): PS2</p>	
Source of power or PIS	Corresponding classification (PS)
All components	PS1
<p>Injury caused by hazardous substances (Clause 7)</p> <p>(Note: Specify hazardous chemicals, whether produces ozone or other chemical construction not addressed as part of the component evaluation.)</p> <p>Example: Liquid in filled component Glycol</p>	
Source of hazardous substances	Corresponding chemical
–	–
<p>Mechanically-caused injury (Clause 8)</p> <p>(Note: List moving part(s), fan, special installations, etc. & corresponding MS classification based on Table 35.)</p> <p>Example: Wall mount unit MS2</p>	
Source of kinetic/mechanical energy	Corresponding classification (MS)
Edges and corners of enclosure	MS1
Mass of the unit	MS1



Thermal burn injury (Clause 9)	
(Note: Identify the surface or support, and corresponding energy source classification based on type of part, location, operating temperature and contact time in Table 38.)	
Example: Hand-held scanner – thermoplastic enclosure TS1	
Source of thermal energy	Corresponding classification (TS)
N/A	None
Radiation (Clause 10)	
(Note: List the types of radiation present in the product and the corresponding energy source classification.)	
Example: DVD – Class 1 Laser Product RS1	
Type of radiation	Corresponding classification (RS)
N/A	None

OVERVIEW OF EMPLOYED SAFEGUARDS				
Clause	Possible Hazard			
5.1	Electrically-caused injury			
Body Part (e.g. Ordinary)	Energy Source (ES3: Primary Filter circuit)	Safeguards		
		Basic	Supplementary	Reinforced (Enclosure)
Ordinary	ES1:Enclosure	N/A	N/A	N/A
6.1	Electrically-caused fire			
Material part (e.g. mouse enclosure)	Energy Source (PS2: 100W circuit)	Safeguards		
		Basic	Supplementary	Reinforced
All combustible materials within equipment fire enclosure	PS3 : primary circuit PS1 : output ports	No ignition occurred; No parts exceeding 90% of its spontaneous ignition temperature.	Control fire spread: V-0 PCB used; Internal wire and tubing insulation complies with Clause 6.5; Transformer complied with Annex G5.3	V-0 enclosure provided
7.1	Injury caused by hazardous substances			
Body Part (e.g., skilled)	Energy Source (hazardous material)	Safeguards		
		Basic	Supplementary	Reinforced



N/A (no such sources)	N/A	N/A	N/A	N/A
8.1	Mechanically-caused injury			
Body Part (e.g. Ordinary)	Energy Source (MS3:High Pressure Lamp)	Safeguards		
		Basic	Supplementary	Reinforced (Enclosure)
Ordinary	MS1: Edges and corners	N/A	N/A	N/A
Mass of the unit	MS1: Mass of the unit	N/A	N/A	N/A
9.1	Thermal Burn			
Body Part (e.g., Ordinary)	Energy Source (TS2)	Safeguards		
		Basic	Supplementary	Reinforced
Ordinary	TS1: Plastic enclosure	N/A	N/A	Enclosure
10.1	Radiation			
Body Part (e.g., Ordinary)	Energy Source (Output from audio port)	Safeguards		
		Basic	Supplementary	Reinforced
N/A	N/A	N/A	N/A	N/A
Supplementary Information:				
(1) See attached energy source diagram for additional details.				
(2) "N" – Normal Condition; "A" – Abnormal Condition; "S" Single Fault				



EN 62368-1			
Clause	Requirement + Test	Result - Remark	Verdict
4	GENERAL REQUIREMENTS		P
4.1.1	Acceptance of materials, components and subassemblies		P
4.1.2	Use of components	Components which are certified to IEC and/or national standards are used correctly within their ratings. Components not covered by IEC standards are tested under the conditions present in the equipment. See also Annex G.	P
4.1.3	Equipment design and construction	Evaluation of safeguards regarding preventing access to ES3 parts, limiting the source supplying outputs to fulfill ES1, and protection in regard to risk of ignition, mechanical-caused injury and thermal burn considered.	P
4.1.15	Markings and instructions.....:	(See Annex F)	P
4.4.4	Safeguard robustness	See below.	P
4.4.4.2	Steady force tests.....:	(See T.2 T.4)	N/A
4.4.4.3	Drop tests.....:	(See Annex T.7)	N/A
4.4.4.4	Impact tests.....:		N/A
4.4.4.5	Internal accessible safeguard enclosure and barrier tests.....:	The external enclosure cannot be opened without damaging the product.	N/A
4.4.4.6	Glass Impact tests.....:	No such glass used.	N/A
4.4.4.7	Thermoplastic material tests.....:	After 7 hours and cooling down to room temperature, no shrinkage, distortion or loosening any enclosure part and insulation sheet was noticeable on the equipment. Test was performed for all sources of enclosure and insulation sheet material, detail see Annex T.8.	P
4.4.4.8	Air comprising a safeguard.....:	(See Annex T)	P



EN 62368-1			
Clause	Requirement + Test	Result - Remark	Verdict
4.4.4.9	Accessibility and safeguard effectiveness	After tests of 4.4.4.2, 4.4.4.3, 4.4.4.7, no safeguard damaged.	P
4.5	Explosion	No explosion occurs during normal/abnormal operation and single fault conditions	P
4.6	Fixing of conductors		P
4.6.1	Fix conductors not to defeat a safeguard		P
4.6.2	10 N force test applied to	See appended table 5.4.2.2, 5.4.2.4 and 5.4.3	N/A
4.7	Equipment for direct insertion into mains socket – outlets		N/A
4.7.2	Mains plug part complies with the relevant standard.....		N/A
4.7.3	Torque (Nm).....		N/A
4.8	Products containing coin/button cell batteries	No coin/button cell batteries used.	N/A
4.8.2	Instructional safeguard		N/A
4.8.3	Battery Compartment Construction		N/A
	Means to reduce the possibility of children removing the battery.....		N/A
4.8.4	Battery Compartment Mechanical Tests.....		N/A
4.8.5	Battery Accessibility		N/A
4.9	Likelihood of fire or shock due to entry of conductive object.....	(See Annex P)	N/A

5	ELECTRICALLY-CAUSED INJURY		P
5.2.1	Electrical energy source classifications.....	(See appended table 5.2)	P
5.2.2	ES1, ES2 and ES3 limits		P
5.2.2.2	Steady-state voltage and current.....	(See appended table 5.2)	P
5.2.2.3	Capacitance limits.....		P
5.2.2.4	Single pulse limits.....	No such single pulses generated in the EUT or applied to it.	N/A
5.2.2.5	Limits for repetitive pulses.....	No such repetitive pulses within the EUT	N/A



EN 62368-1			
Clause	Requirement + Test	Result - Remark	Verdict
5.2.2.6	Ringing signals	No such ringing signals within the EUT	N/A
5.2.2.7	Audio signals	No such audio signals	N/A
5.3	Protection against electrical energy sources	See below	P
5.3.1	General Requirements for accessible parts to ordinary, instructed and skilled persons	See only 4.3 and 5.3 to 5.5 which applies to protection between the accessible parts and hazardous parts of other circuits.	P
5.3.2.1	Accessibility to electrical energy sources and safeguards	Only ES1 circuit can be accessed for this product.	P
5.3.2.2	Contact requirements		P
	a) Test with test probe from Annex V.....	The test probe cannot accessed the hazardous live part	P
	b) Electric strength test potential (V).....	See below.	P
	c) Air gap (mm)	No openings.	P
5.3.2.4	Terminals for connecting stripped wire	No stripped wire used.	N/A
5.4	Insulation materials and requirements		P
5.4.1.2	Properties of insulating material	The choice and application have taken into account as specified in this Clause 5 and Annex T and natural rubber, hygroscopic materials or asbestos are not used as insulation.	P
5.4.1.3	Humidity conditioning.....	(See appended table 5.4.8)	P
5.4.1.4	Maximum operating temperature for insulating materials	(See appended table 5.4.1.4)	P
5.4.1.5	Pollution degree.....	Degree 2	—
5.4.1.5.2	Test for pollution degree 1 environment and for an insulating compound	Pollution degree 2 is applied. No insulating compound applied (however see 5.5.4).	N/A
5.4.1.5.3	Thermal cycling	See above	N/A
5.4.1.6	Insulation in transformers with varying dimensions	No such transformer.	N/A
5.4.1.7	Insulation in circuits generating starting pulses	No such starting pulses.	N/A
5.4.1.8	Determination of working voltage	(See appended table 5.4.1.8)	P



EN 62368-1			
Clause	Requirement + Test	Result - Remark	Verdict
5.4.1.9	Insulating surfaces		N/A
5.4.1.10	Thermoplastic parts on which conductive metallic parts are directly mounted	See below.	P
5.4.1.10.2	Vicat softening temperature..... :		N/A
5.4.1.10.3	Ball pressure :		N/A
5.4.2	Clearances		P
5.4.2.2	Determining clearance using peak working voltage		N/A
5.4.2.3	Determining clearance using required withstand voltage :	(See appended table 5.4.2.2, 5.4.2.4 and 5.4.3)	N/A
	a) a.c. mains transient voltage..... :		—
	b) d.c. mains transient voltage :	Not d.c. mains.	—
	c) external circuit transient voltage..... :	No such transient	—
	d) transient voltage determined by measurement :		—
5.4.2.4	Determining the adequacy of a clearance using an electric strength test	Using procedure 2 to determine the clearance according to 5.4.2.3.	N/A
5.4.2.5	Multiplication factors for clearances and test voltages..... :		N/A
5.4.3	Creepage distances..... :	(See appended table 5.4.2.2, 5.4.2.4 and 5.4.3)	N/A
5.4.3.1	General		N/A
5.4.3.3	Material Group :	IIIa & IIIb	—
5.4.4	Solid insulation	See below	N/A
5.4.4.2	Minimum distance through insulation :	(See appended table 5.4.4.2)	N/A
5.4.4.3	Insulation compound forming solid insulation		N/A
5.4.4.4	Solid insulation in semiconductor devices	See above.	N/A
5.4.4.5	Cemented joints		N/A
5.4.4.6	Thin sheet material	See below	N/A
5.4.4.6.1	General requirements		N/A
5.4.4.6.2	Separable thin sheet material		N/A
	Number of layers (pcs) :		N/A



EN 62368-1			
Clause	Requirement + Test	Result - Remark	Verdict
5.4.4.6.3	Non-separable thin sheet material	No such insulation used within the EUT	N/A
5.4.4.6.4	Standard test procedure for non-separable thin sheet material.....:		N/A
5.4.4.6.5	Mandrel test		N/A
5.4.4.7	Solid insulation in wound components	See G.5.3 and G.6.1 only.	N/A
5.4.4.9	Solid insulation at frequencies >30 kHz.....:	(See appended table 5.4.9)	N/A
5.4.5	Antenna terminal insulation		N/A
5.4.5.1	General		N/A
5.4.5.2	Voltage surge test		N/A
	Insulation resistance (MΩ).....:		N/A
5.4.6	Insulation of internal wire as part of supplementary safeguard.....:	No such insulation of internal wire as part of supplementary safeguard.	N/A
5.4.7	Tests for semiconductor components and for cemented joints	No tests necessary –see only 5.4.4.4.	N/A
5.4.8	Humidity conditioning		N/A
	Relative humidity (%).....:		—
	Temperature (°C)		—
	Duration (h)		—
5.4.9	Electric strength test.....:	(See appended table 5.4.9)	P
5.4.9.1	Test procedure for a solid insulation type test	(See appended table 5.4.9)	N/A
5.4.9.2	Test procedure for routine tests		N/A
5.4.10	Protection against transient voltages between external circuit	No such external circuits	N/A
5.4.10.1	Parts and circuits separated from external circuits		N/A
5.4.10.2	Test methods		N/A
5.4.10.2.1	General		N/A
5.4.10.2.2	Impulse test.....:		N/A
5.4.10.2.3	Steady-state test.....:		N/A
5.4.11	Insulation between external circuits and earthed circuitry.....:	No such external circuit.	N/A



EN 62368-1			
Clause	Requirement + Test	Result - Remark	Verdict
5.4.11.1	Exceptions to separation between external circuits and earth		N/A
5.4.11.2	Requirements		N/A
	Rated operating voltage U_{op} (V).....:		—
	Nominal voltage U_{peak} (V).....:		—
	Max increase due to variation U_{sp}		—
	Max increase due to ageing ΔU_{sa}		—
	$U_{op} = U_{peak} + \Delta U_{sp} + \Delta U_{sa}$:		—
5.5	Components as safeguards		
5.5.1	General		N/A
5.5.2	Capacitors and RC units		N/A
5.5.2.1	General requirement		N/A
5.5.2.2	Safeguards against capacitor discharge after disconnection of a connector.....:	(See appended table 5.5.2.2)	N/A
5.5.3	Transformers	(See Annex G.5.3)	N/A
5.5.4	Optocouplers	(See Annex G.12)	N/A
5.5.5	Relays	No such component provided	N/A
5.5.6	Resistors		N/A
5.5.7	SPD's		N/A
5.5.7.1	Use of an SPD connected to reliable earthing		N/A
5.5.7.2	Use of an SPD between mains and protective earth		N/A
5.5.8	Insulation between the mains and external circuit consisting of a coaxial cable.....:	No such external circuits.	N/A
5.6	Protective conductor		
5.6.2	Requirement for protective conductors	Class III apparatus with no means of earthing.	N/A
5.6.2.1	General requirements		N/A
5.6.2.2	Colour of insulation		N/A
5.6.3	Requirement for protective earthing conductors		N/A



EN 62368-1			
Clause	Requirement + Test	Result - Remark	Verdict
	Protective earthing conductor size (mm ²)		N/A
5.6.4	Requirement for protective bonding conductors		N/A
5.6.4.1	Protective bonding conductors		N/A
	Protective bonding conductor size (mm ²).....		N/A
	Protective current rating (A)		N/A
5.6.4.3	Current limiting and overcurrent protective devices		N/A
5.6.5	Terminals for protective conductors		N/A
5.6.5.1	Requirement		N/A
	Conductor size (mm ²), nominal thread diameter (mm).....		N/A
5.6.5.2	Corrosion		N/A
5.6.6	Resistance of the protective system		N/A
5.6.6.1	Requirements		N/A
5.6.6.2	Test Method Resistance.....		N/A
5.6.7	Reliable earthing		N/A
5.7	Prospective touch voltage, touch current and protective conductor current		N/A
5.7.2	Measuring devices and networks	Figure 4 of IEC 60990 was used in determining of the limit of ES1.	N/A
5.7.2.1	Measurement of touch current.....	(See appended table 5.2)	N/A
5.7.2.2	Measurement of prospective touch voltage		N/A
5.7.3	Equipment set-up, supply connections and earth connections	Clause 4, 5.3 and 5.4 of IEC 60990:1999 applied.	N/A
	System of interconnected equipment (separate connections/single connection).....	Single equipment.	—
	Multiple connections to mains (one connection at a time/simultaneous connections).....	Single connection.	—
5.7.4	Earthed conductive accessible parts.....		N/A
5.7.5	Protective conductor current		N/A
	Supply Voltage (V).....		—
	Measured current (mA).....		—



EN 62368-1			
Clause	Requirement + Test	Result - Remark	Verdict
	Instructional Safeguard.....:		N/A
5.7.6	Prospective touch voltage and touch current due to external circuits	No external circuits.	N/A
5.7.6.1	Touch current from coaxial cables		N/A
5.7.6.2	Prospective touch voltage and touch current from external circuits		N/A
5.7.7	Summation of touch currents from external circuits	No external circuits.	N/A
	a) Equipment with earthed external circuits Measured current (mA).....:		N/A
	b) Equipment whose external circuits are not referenced to earth. Measured current (mA).....:		N/A

6	ELECTRICALLY- CAUSED FIRE		P
6.2	Classification of power sources (PS) and potential ignition sources (PIS)		P
6.2.2	Power source circuit classifications	PS (power source) classification determined by measuring the maximum power in Figures 34 and 35 for load and power source circuits.	P
6.2.2.1	General	See the following details.	P
6.2.2.2	Power measurement for worst-case load fault.....:	(See appended table 6.2.2)	P
6.2.2.3	Power measurement for worst-case power source fault.....:	(See appended table 6.2.2)	P
6.2.2.4	PS1	(See appended table 6.2.2)	P
6.2.2.5	PS2		P
6.2.2.6	PS3		P
6.2.3	Classification of potential ignition sources		P
6.2.3.1	Arcing PIS	(See appended table 6.2.3.1)	P
6.2.3.2	Resistive PIS	(See appended table 6.2.3.2)	P
6.3	Safeguards against fire under normal operating and abnormal operating conditions		P



EN 62368-1			
Clause	Requirement + Test	Result - Remark	Verdict
6.3.1 (a)	No ignition and attainable temperature value less than 90 % defined by ISO 871 or less than 300 C for unknown materials.....:	No ignition and no such temperature attained within the equipment. (See appended table 5.4.1.4, 6.3.2, 9.0, B.2.6)	P
6.3.1 (b)	Combustible materials outside fire enclosure	No such materials outside fire enclosure.	P
6.4	Safeguards against fire under single fault conditions		P
6.4.1	Safeguard Method	Method by control of fire spread applied, Fire enclosure provided.	P
6.4.2	Reduction of the likelihood of ignition under single fault conditions in PS1 circuits		N/A
6.4.3	Reduction of the likelihood of ignition under single fault conditions in PS2 and PS3 circuits		N/A
6.4.3.1	General		N/A
6.4.3.2	Supplementary Safeguards		N/A
	Special conditions if conductors on printed boards are opened or peeled		N/A
6.4.3.3	Single Fault Conditions..... :		N/A
	Special conditions for temperature limited by fuse		N/A
6.4.4	Control of fire spread in PS1 circuits		P
6.4.5	Control of fire spread in PS2 circuits	-	P
6.4.5.2	Supplementary safeguards	(See appended tables 4.1.2 and Annex G)	P
6.4.6	Control of fire spread in PS3 circuit	-	P
6.4.7	Separation of combustible materials from a PIS	Fire enclosure provided.	N/A
6.4.7.1	General..... :		N/A
6.4.7.2	Separation by distance		N/A
6.4.7.3	Separation by a fire barrier	No specific barrier provided.	N/A
6.4.8	Fire enclosures and fire barriers	See below.	P
6.4.8.1	Fire enclosure and fire barrier material properties		P
6.4.8.2.1	Requirements for a fire barrier	No fire barrier used.	N/A
6.4.8.2.2	Requirements for a fire enclosure		P



EN 62368-1			
Clause	Requirement + Test	Result - Remark	Verdict
6.4.8.3	Constructional requirements for a fire enclosure and a fire barrier		P
6.4.8.3.1	Fire enclosure and fire barrier openings		P
6.4.8.3.2	Fire barrier dimensions		N/A
6.4.8.3.3	Top Openings in Fire Enclosure: dimensions (mm)	No openings	N/A
	Needle Flame test		N/A
6.4.8.3.4	Bottom Openings in Fire Enclosure, condition met a), b) and/or c) dimensions (mm)	No opening	N/A
	Flammability tests for the bottom of a fire enclosure		N/A
6.4.8.3.5	Integrity of the fire enclosure, condition met: a), b) or c).....		N/A
6.4.8.4	Separation of PIS from fire enclosure and fire barrier distance (mm) or flammability rating.....	Fire enclosure is made of V-0 material.	N/A
6.5	Internal and external wiring		P
6.5.1	Requirements	No such wire used.	P
6.5.2	Cross-sectional area (mm ²)	0.5	--
6.5.3	Requirements for interconnection to building wiring:	(See Annex Q.)	N/A
6.6	Safeguards against fire due to connection to additional equipment		N/A
	External port limited to PS2 or complies with Clause Q.1		N/A

7	INJURY CAUSED BY HAZARDOUS SUBSTANCES		P
7.2	Reduction of exposure to hazardous substances	No hazardous chemicals within the equipment.	P
7.3	Ozone exposure	No ozone production within the equipment.	N/A
7.4	Use of personal safeguards (PPE)		N/A
	Personal safeguards and instructions.....		--
7.5	Use of instructional safeguards and instructions		P



EN 62368-1			
Clause	Requirement + Test	Result - Remark	Verdict
	Instructional safeguard (ISO 7010)..... :		—
7.6	Batteries..... :	See Annex M	P

8	MECHANICALLY-CAUSED INJURY		N/A
8.1	General	Mass<7Kg, No moving parts in the equipment – see below regarding edges and comers.	N/A
8.2	Mechanical energy source classifications	MS1	N/A
8.3	Safeguards against mechanical energy sources		N/A
8.4	Safeguards against parts with sharp edges and comers	Edges and comers of the enclosure are rounded.	N/A
8.4.1	Safeguards		N/A
8.5	Safeguards against moving parts	No moving parts.	N/A
8.5.1	MS2 or MS3 part required to be accessible for the function of the equipment		N/A
8.5.2	Instructional Safeguard..... :		—
8.5.4	Special categories of equipment comprising moving parts		N/A
8.5.4.1	Large data storage equipment		N/A
8.5.4.2	Equipment having electromechanical device for destruction of media		N/A
8.5.4.2.1	Safeguards and Safety Interlocks..... :		N/A
8.5.4.2.2	Instructional safeguards against moving parts		N/A
	Instructional Safeguard..... :		—
8.5.4.2.3	Disconnection from the supply		N/A
8.5.4.2.4	Probe type and force (N)..... :		N/A
8.5.5	High Pressure Lamps		N/A
8.5.5.1	Energy Source Classification		N/A
8.5.5.2	High Pressure Lamp Explosion Test..... :		N/A
8.6	Stability	Classification MS1 according to table 35, line 5 and no stability requirements.	N/A



EN 62368-1			
Clause	Requirement + Test	Result - Remark	Verdict
8.6.1	Product classification		N/A
	Instructional Safeguard..... :		—
8.6.2	Static stability		N/A
8.6.2.2	Static stability test		N/A
	Applied Force..... :		—
8.6.2.3	Downward Force Test		N/A
8.6.3	Relocation stability test		N/A
	Unit configuration during 10 tilt..... :		—
8.6.4	Glass slide test		N/A
8.6.5	Horizontal force test (Applied Force)..... :		N/A
	Position of feet or movable parts..... :		—
8.7	Equipment mounted to wall or ceiling		N/A
8.7.1	Mounting Means (Length of screws (mm) and mounting surface)		N/A
8.7.2	Direction and applied force..... :		N/A
8.8	Handles strength		N/A
8.8.1	Classification		N/A
8.8.2	Applied Force		N/A
8.9	Wheels or casters attachment requirements		N/A
8.9.1	Classification		N/A
8.9.2	Applied force..... :		—
8.10	Carts, stands and similar carriers		N/A
8.10.1	General		N/A
8.10.2	Marking and instructions		N/A
	Instructional Safeguard..... :		—
8.10.3	Cart, stand or carrier loading test and compliance		N/A
	Applied force..... :		—
8.10.4	Cart, stand or carrier impact test		N/A
8.10.5	Mechanical stability		N/A
	Applied horizontal force (N)..... :		—



EN 62368-1			
Clause	Requirement + Test	Result - Remark	Verdict
8.10.6	Thermoplastic temperature stability (C)..... :		N/A
8.11	Mounting means for rack mounted equipment		N/A
8.11.1	General		N/A
8.11.2	Product Classification		N/A
8.11.3	Mechanical strength test, variable N :		N/A
8.11.4	Mechanical strength test 250N, including end stops		N/A
8.12	Telescoping or rod antennas.....	No such parts.	N/A
	Button/Ball diameter (mm)..... :		—

9	THERMAL BURN INJURY		N/A
9.2	Thermal energy source classifications	No part considered to be accessible other than enclosure. The equipment evaluated by temperature test (see table 5.4.1.4).	N/A
9.3	Safeguard against thermal energy sources	Temperature of enclosure classed as TS1.	N/A
9.4	Requirements for safeguards		N/A
9.4.1	Equipment safeguard		N/A
9.4.2	Instructional safeguard		N/A

10	RADIATION		N/A
10.2	Radiation energy source classification	No such radiation generated from the equipment.	N/A
10.2.1	General classification	See the following details.	N/A
10.3	Protection against laser radiation	No such radiation generated from the equipment.	N/A
	Laser radiation that exists equipment:		—
	Normal, abnormal, single-fault..... :		N/A
	Instructional safeguard..... :		—
	Tool..... :		—
10.4	Protection against visible, infrared, and UV	No such radiation generated from	N/A



EN 62368-1			
Clause	Requirement + Test	Result - Remark	Verdict
	radiation	the equipment.	
10.4.1	General		N/A
10.4.1.a)	RS3 for Ordinary and instructed persons.....:		N/A
10.4.1.b)	RS3 accessible to a skilled person.....:		N/A
	Personal safeguard (PPE) instructional safeguard.....:		—
10.4.1.c)	Equipment visible, IR, UV does not exceed RS1...:		N/A
10.4.1.d)	Normal, abnormal, single-fault conditions		N/A
10.4.1.e)	Enclosure material employed as safeguard is opaque.....:		N/A
10.4.1.f)	UV attenuation.....:		N/A
10.4.1.g)	Materials resistant to degradation UV.....:		N/A
10.4.1.h)	Enclosure containment of optical radiation.....:		N/A
10.4.1.i)	Exempt Group under normal operating conditions.....:		N/A
10.4.2	Instructional safeguard.....:		N/A
10.5	Protection against x-radiation	No such x-radiation generated from the equipment	N/A
10.5.1	X- radiation energy source that exists equipment.....:		N/A
	Normal, abnormal, single fault conditions		N/A
	Equipment safeguards.....:		N/A
	Instructional safeguard for skilled person.....:		N/A
10.5.3	Most unfavourable supply voltage to give maximum radiation.....:		—
	Abnormal and single-fault condition.....:		N/A
	Maximum radiation (pA/kg).....:		N/A
10.6	Protection against acoustic/energy sources	Not such equipment.	N/A
10.6.1	General		N/A
10.6.2	Classification		N/A
	Acoustic output, dB(A).....:		N/A



EN 62368-1			
Clause	Requirement + Test	Result - Remark	Verdict
	Output voltage, unweighted r.m.s..... :		N/A
10.6.4	Protection of persons		N/A
	Instructional safeguards..... :		N/A
	Equipment safeguard prevent ordinary person to RS2..... :		—
	Means to actively inform user of increase sound pressure..... :		—
	Equipment safeguard prevent ordinary person to RS2..... :		—
10.6.5	Requirements for listening devices (headphones, earphones, etc.)		N/A
10.6.5.1	Corded passive listening devices with analog input		N/A
	Input voltage with 94 dB(A) L_{Aeq} acoustic pressure output..... :		—
10.6.5.2	Corded listening devices with digital input		N/A
	Maximum dB(A)..... :		—
10.6.5.3	Cordless listening device		N/A
	Maximum dB(A)..... :		—

B	NORMAL OPERATING CONDITION TESTS, ABNORMAL OPERATING CONDITION TESTS AND SINGLE FAULT CONDITION TESTS		P
B.2	Normal Operating Conditions		P
B.2.1	General requirements..... :	(See summary of testing for tested models, each loaded according to its output ratings. See also appended table B.2.5.)	P
	Audio Amplifiers and equipment with audio amplifiers..... :	Not such equipment.	N/A
B.2.3	Supply voltage and tolerances	+10 % and -10 % considered.	P
B.2.5	Input test..... :	(See appended table B.2.5)	P
B.3	Simulated abnormal operating conditions		N/A
B.3.1	General requirements..... :	(See appended table B.3)	N/A



EN 62368-1			
Clause	Requirement + Test	Result - Remark	Verdict
B.3.2	Covering of ventilation openings		N/A
B.3.3	D.C. mains polarity test	The EUT is not connected to a D.C. mains	N/A
B.3.4	Setting of voltage selector..... :	No voltage selector was used.	N/A
B.3.5	Maximum load at output terminals..... :	(See appended table B.3)	N/A
B.3.6	Reverse battery polarity		N/A
B.3.7	Abnormal operating conditions as specified in Clause E.2.	Not such equipment.	N/A
B.3.8	Safeguards functional during and after abnormal operating conditions	All safeguards remained effective.	N/A
B.4	Simulated single fault conditions		P
B.4.2	Temperature controlling device open or short-circuited..... :	No such device used.	N/A
B.4.3	Motor tests		N/A
B.4.3.1	Motor blocked or rotor locked increasing the internal ambient temperature :		N/A
B.4.4	Short circuit of functional insulation	See below.	P
B.4.4.1	Short circuit of clearances for functional insulation	(See appended table B.4)	P
B.4.4.2	Short circuit of creepage distances for functional insulation	(See appended table B.4)	P
B.4.4.3	Short circuit of functional insulation on coated printed boards	No coated printed boards used.	N/A
B.4.5	Short circuit and interruption of electrodes in tubes and semiconductors	(See appended table B.4 for faults on semiconductor components)	P
B.4.6	Short circuit or disconnect of passive components	(See appended table B.4)	P
B.4.7	Continuous operation of components	The EUT is continuous operating type and no such components intended for short time operation or intermittent operation	N/A
B.4.8	Class 1 and Class 2 energy sources within limits during and after single fault conditions		N/A
B.4.9	Battery charging under single fault conditions..... :		N/A



EN 62368-1			
Clause	Requirement + Test	Result - Remark	Verdict
C	UV RADIATION		N/A
C.1	Protection of materials in equipment from UV radiation	No UV generated from the equipment.	N/A
C.1.2	Requirements	See above.	N/A
C.1.3	Test method	See above.	N/A
C.2	UV light conditioning test	See above.	N/A
C.2.1	Test apparatus	See above.	N/A
C.2.2	Mounting of test samples	See above.	N/A
C.2.3	Carbon-arc light-exposure apparatus	See above.	N/A
C.2.4	Xenon-arc light exposure apparatus	See above.	N/A

D	TEST GENERATORS		N/A
D.1	Impulse test generators		N/A
D.2	Antenna interface test generator		N/A
D.3	Electronic pulse generator		N/A

E	TEST CONDITIONS FOR EQUIPMENT CONTAINING AUDIO AMPLIFIERS		N/A
E.1	Audio amplifier normal operating conditions	Not such equipment.	N/A
	Audio signal voltage (V).....:		--
	Rated load impedance (Ω)		--
E.2	Audio amplifier abnormal operating conditions		N/A

F	EQUIPMENT MARKINGS, INSTRUCTIONS, AND INSTRUCTIONAL SAFEGUARDS		P
F.1	General requirements	See below.	P
	Instructions – Language	English	—
F.2	Letter symbols and graphical symbols		P
F.2.1	Letter symbols according to IEC60027-1	Letter symbols for quantities and units are complied with IEC 60027-1.	P
F.2.2	Graphic symbols IEC, ISO or manufacturer specific	Graphical symbols are complied with IEC 60417, ISO 3864-2, ISO 7000 or ISO 7010.	P



EN 62368-1			
Clause	Requirement + Test	Result - Remark	Verdict
F.3	Equipment markings		P
F.3.1	Equipment marking locations	The required marking is located on the enclosure of the equipment and is easily visible.	P
F.3.2	Equipment identification markings	See copy of marking plate.	P
F.3.2.1	Manufacturer identification	See copy of marking plate.	—
F.3.2.2	Model identification		—
F.3.3	Equipment rating markings	See the following details.	P
F.3.3.1	Equipment with direct connection to mains		N/A
F.3.3.2	Equipment without direct connection to mains		N/A
F.3.3.3	Nature of supply voltage.....	---	—
F.3.3.4	Rated voltage.....	See copy of marking plate.	—
F.3.3.4	Rated frequency.....		—
F.3.3.6	Rated current or rated power.....	See copy of marking plate.	—
F.3.3.7	Equipment with multiple supply connections	Only one mains supply connection provided.	N/A
F.3.4	Voltage setting device	No voltage setting device.	N/A
F.3.5	Terminals and operating devices	See below.	P
F.3.5.1	Mains appliance outlet and socket-outlet markings.....	No outlet used.	N/A
F.3.5.2	Switch position identification marking.....	See sample	P
F.3.5.3	Replacement fuse identification and rating markings.....	No such replacement fuse used.	N/A
F.3.5.4	Replacement battery identification marking.....	See sub-clause F.5	N/A
F.3.5.5	Terminal marking location		N/A
F.3.6	Equipment markings related to equipment classification		N/A
F.3.6.1	Class I Equipment	Class III equipment.	N/A
F.3.6.1.1	Protective earthing conductor terminal		N/A
F.3.6.1.2	Neutral conductor terminal		N/A
F.3.6.1.3	Protective bonding conductor terminals		N/A



EN 62368-1			
Clause	Requirement + Test	Result - Remark	Verdict
F.3.6.2	Class II equipment (IEC60417-5172)	Symbol IEC 60417-5172 used.	N/A
F.3.6.2.1	Class II equipment with or without functional earth	See above	N/A
F.3.6.2.2	Class II equipment with functional earth terminal marking		N/A
F.3.7	Equipment IP rating marking	IPX0	—
F.3.8	External power supply output marking		N/A
F.3.9	Durability, legibility and permanence of marking	Marking is considered to be legible and easily discernible. See also the following details.	P
F.3.10	Test for permanence of markings	<p>The label was subjected to the permanence of marking test. The label was rubbed with cloth soaked with water for 15 sec. And then again for 15 sec. With the cloth soaked with petroleum spirit.</p> <p>After this test there was no damage to the label. The marking on the label did not fade. There was no curling and lifting of the label edge.</p> <p>After each test, the marking remained legible.</p>	P
F.4	Instructions		P
	a) Equipment for use in locations where children not likely to be present - marking		N/A
	b) Instructions given for installation or initial use		P
	c) Equipment intended to be fastened in place		N/A
	d) Equipment intended for use only in restricted access area		N/A
	e) Audio equipment terminals classified as ES3 and other equipment with terminals marked in accordance F.3.6.1	No such terminals provided.	N/A
	f) Protective earthing employed as safeguard		N/A
	g) Protective earthing conductor current exceeding ES2 limits		N/A



EN 62368-1			
Clause	Requirement + Test	Result - Remark	Verdict
	h) Symbols used on equipment	No such symbols used as a safeguard considered.	N/A
	i) Permanently connected equipment not provided with all-pole mains switch	Not permanently connected equipment.	N/A
	j) Replaceable components or modules providing safeguard function	No such markings.	N/A
F.5	Instructional safeguards		P
	Where "instructional safeguard" is referenced in the test report it specifies the required elements, location of marking and/or instruction	The relative symbol or warning is provided on product, and the complete instructional safeguard is provided on the instruction	P

G	COMPONENTS		P
G.1	Switches		P
G.1.1	General requirements	See sample	P
G.1.2	Ratings, endurance, spacing, maximum load		N/A
G.2	Relays		N/A
G.2.1	General requirements	No relay used.	N/A
G.2.2	Overload test		N/A
G.2.3	Relay controlling connectors supply power		N/A
G.2.4	Mains relay, modified as stated in G.2		N/A
G.3	Protection Devices		N/A
G.3.1	Thermal cut-offs	No thermal cut-offused.	N/A
G.3.1.1a) &b)	Thermal cut-outs separately approved according to IEC 60730 with conditions indicated in a) & b)		N/A
G.3.1.1c)	Thermal cut-outs tested as part of the equipment as indicated in c)		N/A
G.3.1.2	Thermal cut-offconnections maintained and secure		N/A
G.3.2	Thermal links		N/A
G.3.2.1a)	Thermal links separately tested with IEC 60691	No thermal link used.	N/A
G.3.2.1b)	Thermal links tested as part of the equipment		N/A



EN 62368-1			
Clause	Requirement + Test	Result - Remark	Verdict
	Aging hours (H).....:		—
	Single Fault Condition.....:		—
	Test Voltage (V) and Insulation Resistance (Ω)..:		—
G.3.3	PTC Thermistors	No PTC thermistor used.	N/A
G.3.4	Overcurrent protection devices		N/A
G.3.5	Safeguards components not mentioned in G.3.1 to G.3.5		N/A
G.3.5.1	Non-resettable devices suitably rated and marking provided	See F.3.5.3	N/A
G.3.5.2	Single faults conditions.....:	(See appended Table B.4)	N/A
G.4	Connectors		N/A
G.4.1	Spacings	No such connector with insulated surfaces accessible within the EUT	N/A
G.4.2	Mains connector configuration	The dimension and construction of the injection part of plugs shall be evaluated when submitted for national approval.	N/A
G.4.3	Plug is shaped that insertion into mains socket-outlets or appliance coupler is unlikely	Output connector with a shape that insert into mains connector is unlikely to occur.	N/A
G.5	Wound Components		N/A
G.5.1	Wire insulation in wound components.....	Approved Insulated wire used as Reinforced insulation for secondary winding of T1.	N/A
G.5.1.2 a)	Two wires in contact inside wound component, angle between 45° and 90°	Physical separation provided by insulation tape and construction design	N/A
G.5.1.2 b)	Construction subject to routine testing	The routine tests are to be considered for the production based on the relevant approval (see cover page).	N/A
G.5.2	Endurance test on wound components	Not applied for.	N/A
G.5.2.1	General test requirements		N/A
G.5.2.2	Heat run test		N/A



EN 62368-1			
Clause	Requirement + Test	Result - Remark	Verdict
	Time (s).....:		—
	Temperature (°C).....:		—
G.5.2.3	Wound Components supplied by mains		N/A
G.5.3	Transformers		N/A
G.5.3.1	Requirements applied (IEC61204-7, IEC61558-1/-2, and/or IEC62368-1).....:	The transformer meets the requirements given in G.5.3.2 and G.5.3.3.	N/A
	Position.....:	T1	—
	Method of protection	See G.5.3.3.	—
G.5.3.2	Insulation	Primary windings and secondary windings are separated by Reinforced insulation (The core is considered as primary part as it is not isolated from Primary)	N/A
	Protection from displacement of windings.....:	The end-turn of each winding is fixed by insulating tape	—
G.5.3.3	Overload test.....:	(See appended table B.3)	N/A
G.5.3.3.1	Test conditions	Tested in the complete equipment as an SMPS.	N/A
G.5.3.3.2	Winding Temperature s testing in the unit	(See appended table B.3)	N/A
G.5.3.3.3	Winding Temperature s - Alternative test method	Alternative test method was not considered.	N/A
G.5.4	Motors		N/A
G.5.4.1	General requirements		N/A
	Position		—
G.5.4.2	Test conditions		N/A
G.5.4.3	Running overload test		N/A
G.5.4.4	Locked-rotor overload test		N/A
	Test duration (days)		—
G.5.4.5	Running overload test for d.c. motors in secondary circuits		N/A
G.5.4.5.2	Tested in the unit		N/A



EN 62368-1			
Clause	Requirement + Test	Result - Remark	Verdict
	Electric strength test (V)..... :		—
G.5.4.5.3	Tested on the Bench - Alternative test method; test time (h) :		N/A
	Electric strength test (V)..... :		—
G.5.4.6	Locked-rotor overload test for d.c. motors in secondary circuits		N/A
G.5.4.6.2	Tested in the unit		N/A
	Maximum Temperature :		N/A
	Electric strength test (V) :		N/A
G.5.4.6.3	Tested on the bench - Alternative test method; test time (h)..... :		N/A
	Electric strength test (V)..... :		N/A
G.5.4.7	Motors with capacitors		N/A
G.5.4.8	Three-phase motors		N/A
G.5.4.9	Series motors		N/A
	Operating voltage :		—
G.6	Wire Insulation		N/A
G.6.1	General	Triple insulated winding in T101 secondary windings used as reinforced safeguard in the isolating transformer that has separately complied with Annex J.	N/A
G.6.2	Solvent-based enamel wiring insulation	Insulation does not rely on solvent-based enamel.	N/A
G.7	Mains supply cords		N/A
G.7.1	General requirements		N/A
	Type..... :		—
	Rated current (A)..... :		—
	Cross-sectional area (mm ²), (AWG)..... :		—
G.7.2	Compliance and test method		N/A
G.7.3	Cord anchorages and strain relief for non-detachable power supply cords		N/A



EN 62368-1			
Clause	Requirement + Test	Result - Remark	Verdict
G.7.3.2	Cord strain relief		N/A
G.7.3.2.1	Requirements		N/A
	Strain relief test force (N)..... :		—
G.7.3.2.2	Strain relief mechanism failure		N/A
G.7.3.2.3	Cord sheath or jacket position, distance (mm)..... :		—
G.7.3.2.4	Strain relief comprised of polymeric material		N/A
G.7.4	Cord Entry..... :		N/A
G.7.5	Non-detachable cord bend protection		N/A
G.7.5.1	Requirements		N/A
G.7.5.2	Mass (g)		—
	Diameter (m)..... :		—
	Temperature (°C)..... :		—
G.7.6	Supply wiring space		N/A
G.7.6.2	Stranded wire		N/A
G.7.6.2.1	Test with 8 mm strand		N/A
G.8	Varistors		N/A
G.8.1	General requirements	No such varistor used.	N/A
G.8.2	Safeguard against shock		N/A
G.8.3	Safeguard against fire		N/A
G.8.3.2	Varistor overload test..... :		N/A
G.8.3.3	Temporary overvoltage..... :		N/A
G.9	Integrated Circuit (IC) Current Limiters		N/A
G.9.1 a)	Manufacturer defines limit at max. 5A.	No IC current limiter provided within the equipment.	N/A
G.9.1 b)	Limiters do not have manual operator or reset		N/A
G.9.1 c)	Supply source does not exceed 250 VA		--
G.9.1 d)	IC limiter output current (max. 5A)..... :		--
G.9.1 e)	Manufacturers' defined drift		--
G.9.2	Test Program 1		N/A
G.9.3	Test Program 2		N/A



EN 62368-1			
Clause	Requirement + Test	Result - Remark	Verdict
G.9.4	Test Program 3		N/A
G.10	Resistors		N/A
G.10.1	General requirements		N/A
G.10.2	Resistor test		N/A
G.10.3	Test for resistors serving as safeguards between the mains and an external circuit consisting of a coaxial cable		N/A
G.10.3.1	General requirements		N/A
G.10.3.2	Voltage surge test		N/A
G.10.3.3	Impulse test		N/A
G.11	Capacitor and RC units		N/A
G.11.1	General requirements	No such component provided	N/A
G.11.2	Conditioning of capacitors and RC units	No such component provided	N/A
G.11.3	Rules for selecting capacitors	No such component provided	N/A
G.12	Optocouplers		N/A
	Optocouplers comply with IEC 60747-5-5:2007 Spacing or Electric Strength Test (specify option and test results).....:	The optocoupler complied with standard IEC/EN 60747-5-5. (see appended table 4.1.2)	N/A
	Type test voltage Vini	Considered	—
	Routine test voltage, Vini,b	Considered	—
G.13	Printed boards		N/A
G.13.1	General requirements	See the following details.	N/A
G.13.2	Uncoated printed boards	The insulation between conductors on the outer surfaces of an uncoated printed board complied with the minimum clearance and creepage requirements	N/A
G.13.3	Coated printed boards	No coated printed board or multilayer board applied for within the equipment.	N/A
G.13.4	Insulation between conductors on the same inner surface		N/A



EN 62368-1			
Clause	Requirement + Test	Result - Remark	Verdict
	Compliance with cemented joint requirements (Specify construction).....:		—
G.13.5	Insulation between conductors on different surfaces		N/A
	Distance through insulation.....:		N/A
	Number of insulation layers (pcs)		—
G.13.6	Tests on coated printed boards		N/A
G.13.6.1	Sample preparation and preliminary inspection		N/A
G.13.6.3A 36W)	Thermal conditioning		N/A
G.13.6.2b)	Electric strength test		N/A
G.13.6.2c)	Abrasion resistance test		N/A
G.14	Coating on components terminals		N/A
G.14.1	Requirements	No coating on component terminals considered to affect creepage or clearances.	N/A
G.15	Liquid filled components		N/A
G.15.1	General requirements	No such device provided within the equipment.	N/A
G.15.2	Requirements		N/A
G.15.3	Compliance and test methods		N/A
G.15.3.1	Hydrostatic pressure test		N/A
G.15.3.2	Creep resistance test		N/A
G.15.3.3	Tubing and fittings compatibility test		N/A
G.15.3.4	Vibration test		N/A
G.15.3.5	Thermal cycling test		N/A
G.15.3.6	Force test		N/A
G.15.4	Compliance		N/A
G.16	IC including capacitor discharge function (ICX)		N/A
a)	Humidity treatment in accordance with sc5.4.8 – 120 hours		N/A



EN 62368-1			
Clause	Requirement + Test	Result - Remark	Verdict
b)	Impulse test using circuit 2 with $U_c =$ to transient voltage		N/A
C1)	Application of ac voltage at 110% of rated voltage for 2.5 minutes		N/A
C2)	Test voltage		—
D1)	10,000 cycles on and off using capacitor with smallest capacitance resistor with largest resistance specified by manufacturer		N/A
D2)	Capacitance		—
D3)	Resistance		—

H	CRITERIA FOR TELEPHONE RINGING SIGNALS		N/A
H.1	General	No telephone ringing signal generated within the equipment.	N/A
H.2	Method A		N/A
H.3	Method B		N/A
H.3.1	Ringling signal		N/A
H.3.1.1	Frequency (Hz)		—
H.3.1.2	Voltage (V)		—
H.3.1.3	Cadence; time (s) and voltage (V)		—
H.3.1.4	Single fault current (mA):		—
H.3.2	Tripping device and monitoring voltage.....		N/A
H.3.2.1	Conditions for use of a tripping device or a monitoring voltage complied with		N/A
H.3.2.2	Tripping device		N/A
H.3.2.3	Monitoring voltage (V).....		—

J	INSULATED WINDING WIRES FOR USE WITHOUT INTERLEAVED INSULATION		N/A
	General requirements	Triple insulated winding wiring used as reinforced safeguard in the isolating transformer, See Table 4.1.2.	N/A



EN 62368-1			
Clause	Requirement + Test	Result - Remark	Verdict
K	SAFETY INTERLOCKS		N/A
K.1	General requirements	No safety interlock provided.	N/A
K.2	Components of safety interlock safeguard mechanism		N/A
K.3	Inadvertent change of operating mode		N/A
K.4	Interlock safeguard override		N/A
K.5	Fail-safe		N/A
	Compliance		N/A
K.6	Mechanically operated safety interlocks		N/A
K.6.1	Endurance requirement		N/A
K.6.2	Compliance and Test method.....		N/A
K.7	Interlock circuit isolation		N/A
K.7.1	Separation distance for contact gaps & interlock circuit elements (type and circuit location)		N/A
K.7.2	Overload test, Current (A).....		N/A
K.7.3	Endurance test		N/A
K.7.4	Electric strength test		N/A

L	DISCONNECT DEVICES		N/A
L.1	General requirements		N/A
L.2	Permanently connected equipment		N/A
L.3	Parts that remain energized		N/A
L.4	Single phase equipment		N/A
L.5	Three-phase equipment		N/A
L.6	Switches as disconnect devices		N/A
L.7	Plugs as disconnect devices		N/A
L.8	Multiple power sources	Only one a.c. mains connection.	N/A



EN 62368-1			
Clause	Requirement + Test	Result - Remark	Verdict
M	EQUIPMENT CONTAINING BATTERIES AND THEIR PROTECTION CIRCUITS		P
M.1	General requirements	Li-ion Battery cell is considered safe under short-circuiting conditions	P
M.2	Safety of batteries and their cells		N/A
M.2.1	Requirements		N/A
M.2.2	Compliance and test method (identify method).....:		--
M.3	Protection circuits		P
M.3.1	Requirements	Considered	P
M.3.2	Tests	The EUT is supplied by one rechargeable battery which is considered safe under short circuiting conditions	P
	- Overcharging of a rechargeable battery		N/A
	- Unintentional charging of a non-rechargeable battery		N/A
	- Reverse charging of a rechargeable battery		N/A
	- Excessive discharging rate for any battery		N/A
M.3.3	Compliance		--
M.4	Additional safeguards for equipment containing secondary lithium battery		N/A
M.4.1	General		N/A
M.4.2	Charging safeguards		N/A
M.4.2.1	Charging operating limits		N/A
M.4.2.3A	Charging voltage, current and temperature.....: (36W)		--
M.4.2.2 b)	Single faults in charging circuitry.....: :		--
M.4.3	Fire Enclosure		N/A
M.4.4	Endurance of equipment containing a secondary lithium battery		N/A
M.4.4.2	Preparation		N/A
M.4.4.3	Drop and charge/discharge function tests		N/A



EN 62368-1			
Clause	Requirement + Test	Result - Remark	Verdict
	Drop		N/A
	Charge		N/A
	Discharge		N/A
M.4.4.4	Charge-discharge cycle test		N/A
M.4.4.5	Result of charge-discharge cycle test		N/A
M.5	Risk of burn due to short circuit during carrying		N/A
M.5.1	Requirement		N/A
M.5.2	Compliance and Test Method (Test of P.2.3)		N/A
M.6	Prevention of short circuits and protection from other effects of electric current		N/A
M.6.1	Short circuits		N/A
M.6.1.1	General requirements		N/A
M.6.1.2	Test method to simulate an internal fault		N/A
M.6.1.3	Compliance (Specify M.6.1.2 or alternative method)		--
M.6.2	Leakage current (mA)		--
M.7	Risk of explosion from lead acid and NiCd batteries		N/A
M.7.1	Ventilation preventing explosive gas concentration		N/A
M.7.2	Compliance and test method		N/A
M.8	Protection against internal ignition from external spark sources of lead acid batteries		N/A
M.8.1	General requirements		N/A
M.8.2	Test method		N/A
M.8.2.1	General requirements		N/A
M.8.2.2	Estimation of hypothetical volume V_z (m^3/s).....		--
M.8.2.3	Correction factors.....		--
M.8.2.4	Calculation of distance d (mm)		--
M.9	Preventing electrolyte spillage		N/A
M.9.1	Protection from electrolyte spillage		N/A



EN 62368-1			
Clause	Requirement + Test	Result - Remark	Verdict
M.9.2	Tray for preventing electrolyte spillage		N/A
M.10	Instructions to prevent reasonably foreseeable misuse (Determination of compliance: inspection, data review; or abnormal testing)		N/A

N	ELECTROCHEMICAL POTENTIALS		N/A
	Metal(s) used.....	Class III equipment.	—

O	MEASUREMENT OF CREEPAGE DISTANCES AND CLEARANCES		N/A
	Figures O.1 to O.20 of this Annex applied.....	Considered.	—

P	SAFEGUARDS AGAINST ENTRY OF FOREIGN OBJECTS AND SPILLAGE OF INTERNAL LIQUIDS		N/A
P.1	General requirements	No openings of enclosure.	N/A
P.2.2	Safeguards against entry of foreign object		N/A
	Location and Dimensions (mm)	No openings of enclosure.	—
P.2.3	Safeguard against the consequences of entry of foreign object		N/A
P.2.3.1	Safeguards against the entry of a foreign object		N/A
	Openings in transportable equipment		N/A
	Transportable equipment with metalized plastic parts.....		N/A
P.2.3.2	Openings in transportable equipment in relation to metallized parts of a barrier or enclosure (identification of supplementary safeguard)		N/A
P.3	Safeguards against spillage of internal liquids	No such liquids.	N/A
P.3.1	General requirements		N/A
P.3.2	Determination of spillage consequences		N/A
P.3.3	Spillage safeguards		N/A
P.3.4	Safeguards effectiveness		N/A
P.4	Metallized coatings and adhesive securing parts	No such construction.	N/A
P.4.2 a)	Conditioning testing		N/A



EN 62368-1			
Clause	Requirement + Test	Result - Remark	Verdict
	Tc (°C).....:		—
	Tr (°C).....:		—
	Ta (°C).....:		—
P.4.2 b)	Abrasion testing		N/A
P.4.2 c)	Mechanical strength testing.....:		N/A

Q	CIRCUITS INTENDED FOR INTERCONNECTION WITH BUILDING WIRING		N/A
Q.1	Limited power sources	See appended table Annex Q.1	N/A
Q.1.1 a)	Inherently limited output		N/A
Q.1.1 b)	Impedance limited output		N/A
	- Regulating network limited output under normal operating and simulated single fault condition	A regulating network limits the output in compliance with table Q.1 both under normal operating conditions and after any single fault.	N/A
Q.1.1 c)	Overcurrent protective device limited output		N/A
Q.1.1 d)	IC current limiter complying with G.9		N/A
Q.1.2	Compliance and test method	See appended table Annex Q.1	N/A
Q.2	Test for external circuits – paired conductor cable	No such circuit for connection to the EUT	N/A
	Maximum output current (A)		—
	Current limiting method.....:		—

R	LIMITED SHORT CIRCUIT TEST		N/A
R.1	General requirements	No such consideration.	N/A
R.2	Determination of the overcurrent protective device and circuit		N/A
R.3	Test method Supply voltage (V) and short-circuit current (A)).		N/A



EN 62368-1			
Clause	Requirement + Test	Result - Remark	Verdict
S	TESTS FOR RESISTANCE TO HEAT AND FIRE		N/A
S.1	Flammability test for fire enclosures and fire barrier materials of equipment where the steady state power does not exceed 4 000 W	Approved fire enclosure with V-0 material used.	N/A
	Samples, material.....:		—
	Wall thickness (mm).....:		—
	Conditioning (C).....:		—
	Test flame according to IEC 60695-11-5 with conditions as set out		N/A
	- Material not consumed completely		N/A
	- Material extinguishes within 30s		N/A
	- No burning of layer or wrapping tissue		N/A
S.2	Flammability test for fire enclosure and fire barrier integrity		N/A
	Samples, material.....:		—
	Wall thickness (mm).....:		—
	Conditioning (C).....:		—
	Test flame according to IEC 60695-11-5 with conditions as set out		N/A
	Test specimen does not show any additional hole		N/A
S.3	Flammability test for the bottom of a fire enclosure		N/A
	Samples, material.....:		—
	Wall thickness (mm).....:		—
	Cheesecloth did not ignite		N/A
S.4	Flammability classification of materials		P
S.5	Flammability test for fire enclosures and fire barrier materials of equipment where the steady state power does not exceed 4 000 W		N/A
	Samples, material.....:		—
	Wall thickness (mm).....:		—
	Conditioning (test condition), (°C).....:		—



EN 62368-1			
Clause	Requirement + Test	Result - Remark	Verdict
	Test flame according to IEC 60695-11-20 with conditions as set out		N/A
	After every test specimen was not consumed completely		N/A
	After fifth flame application, flame extinguished within 1 min		N/A

T	MECHANICAL STRENGTH TESTS		P
T.1	General requirements		N/A
T.2	Steady force test, 10 N	(See appended table T.2)	N/A
T.3	Steady force test, 30 N	No internal enclosure.	N/A
T.4	Steady force test, 100 N	(See appended table T.4)	N/A
T.5	Steady force test, 250 N		N/A
T.6	Enclosure impact test		N/A
	Fall test		N/A
	Swing test		N/A
T.7	Drop test	(See appended table T.7)	P
T.8	Stress relief test.....	(See appended table T.8)	P
T.9	Impact Test (glass)		N/A
T.9.1	General requirements		N/A
T.9.2	Impact test and compliance		N/A
	Impact energy (J).....		—
	Height (m).....		—
T.10	Glass fragmentation test.....		N/A
T.11	Test for telescoping or rod antennas	No such device.	N/A
	Torque value (Nm)		—

U	MECHANICAL STRENGTH OF CATHODE RAY TUBES (CRT) AND PROTECTION AGAINST THE EFFECTS OF IMPLOSION		N/A
U.1	General requirements	No CRT provided.	N/A



EN 62368-1			
Clause	Requirement + Test	Result - Remark	Verdict
U.2	Compliance and test method for non-intrinsically protected CRTs		N/A
U.3	Protective Screen.....:		N/A

V	DETERMINATION OF ACCESSIBLE PARTS (FINGERS, PROBES AND WEDGES)		N/A
V.1	Accessible parts of equipment	No access with test probes to any hazardous parts	N/A
V.2	Accessible part criterion		N/A



4.1.2	TABLE: List of critical components					N/A
Object / part No.	Manufacturer/ trademark	Type / model	Technical data	Standard	Mark(s) of conformity	
--	--	--	--	--	--	
--	--	--	--	--	--	
--	--	--	--	--	--	

Supplementary information: /

5.2	Table: Classification of electrical energy sources						P
5.2.2.2 – Steady State Voltage and Current conditions							
No.	Supply Voltage	Location (e.g. circuit designation)	Test conditions ¹⁾	Parameters			ES Class
				U (Vrms or Vpk)	I (Apk or Arms)	Hz	
1	264Vd.c.	Input	Normal	264	--	--	ES3
			Abnormal output overload	--	--	--	--
			--	--	--	--	--

Note: Input voltage: 264Vac, 50Hz

5.2.2.3 - Capacitance Limits							
No.	Supply Voltage	Location (e.g. circuit designation)	Test conditions	Parameters		ES Class	
				Capacitance, nF	Upk (V)		
--	--	--	normal	--	--	--	
			Abnormal	--	--	--	
			Single fault: OC	--	--	--	

Overall capacity: CX101=0.33μF±10%;
Limit: ES1=60V; ES2=120V.

5.2.2.4 - Single Pulses



No.	Supply Voltage	Location (e.g. circuit designation)	Test conditions	Parameters			ES Class
				Duration (ms)	Upk (V)	l _{pk} (mA)	
--	--	--	Normal	--	--	--	
			Abnormal	--	--	--	
			Signal fault	--	--	--	
5.2.2.5 - Repetitive Pulses							
No.	Supply Voltage	Location (e.g. circuit designation)	Test conditions	Parameters			ES Class
				Off time (ms)	Upk (V)	l _{pk} (mA)	
--	--	--	Normal:	--	--	--	
			Abnormal;	--	--	--	
			Single fault:	--	--	--	
Test Conditions: Normal – Full load and no load. Abnormal – Overload output Supplementary information: SC=Short Circuit, OC=Open Circuit .							

5.4.1.4, 6.3.2, 9.0, B.2.6	TABLE: Temperature measurements				P	
	Supply voltage (V)	90V	264V		—	
	Ambient T _{min} (°C)	25.1	25.1		—	
	Ambient T _{max} (°C)	25.4	25.4		—	
	T _{ma} (°C)	--	--		—	
Maximum measured temperature T of part/at:		T (°C)			Allowed T _{max} (°C)	
PCB near transformer		64.3	--	62.2	--	130
Transformer Coil		91.3	--	90.1	--	110
Transformer Core		86.1	--	85.3		110
Enclosure outside		48.3	--	47.5	--	Ref
Ambient		25.1	--	25.1	--	--



Supplementary information: * Temperature limit for TS1 of accessible enclosure according to Table 38.

Note 1: The temperatures were measured under the worse case normal mode defined in clause B.2.1.

Note 2: Temperature limits are calculated as follows:

Winding components providing safety isolation:

Class B → $T_{max} = 120 - 10 = 110^{\circ}C$

Temperature T of winding:	T101 (°C)	R ₁ (Ω)	t ₂ (°C)	R ₂ (Ω)	T (°C)	Allowed T _{max} (°C)	Insulation class
--	--	--	--	--	--	--	--

5.4.1.8	Table: working voltage measurement	N/A
----------------	---	------------

Location	RMS voltage (V)	Peak voltage (V)	Comments
output: -Vdc/A			
--	--	--	--
--	--	--	--

supplementary information:

5.4.1.10.2	TABLE: Vicat softening temperature of thermoplastics	N/A
-------------------	---	------------

Penetration (mm).....		--
Object/ Part No./Material	Manufacturer/trademark	T softening (°C)
--	--	--

supplementary information: --

5.4.1.10.3	TABLE: Ball pressure test of thermoplastics	P
-------------------	--	----------

Allowed impression diameter (mm)	≤ 2 mm	--	
Object/Part No./Material	Manufacturer/trademark	Test temperature (°C)	Impression diameter (mm)
Plug base	--	125	0.96

Supplementary information: Other materials of transformer bobbin are no need to conduct this test., see appended table 4.1.2, And no other parts are necessary to be tested.

5.4.2.2, 5.4.2.4 and 5.4.3	TABLE: Minimum Clearances/Creepage distance	N/A
-----------------------------------	--	------------



Clearance (cl) and creepage distance (cr) at/of/between:	Up (V)	U r.m.s. (V)	Frequency (kHz)	Required cl (mm)	cl (mm)	Required cr (mm)	cr (mm)
--	--	--	--	--	--	--	--
--	--	--	--	--	--	--	--

Supplementary information: B= Basic insulation, R=Reinforced insulation.

1. T101 is additional fixed by glue.
2. Triple insulated wire used in secondary side. Core of transformer (T101) is considered as primary.
3. The equipment was evaluated for a maximum operating altitude of 5000 m. Therefore the requirements of IEC 60664-1 for clearances were considered and the required clearance was multiplied with an altitude correction factor of 1.48

5.4.2.3	TABLE: Minimum Clearances distances using required withstand voltage			N/A
	Overvoltage Category (OV):			II
	Pollution Degree:			2
Clearance distanced between:		Required withstand voltage (V _{peak})	Required cl (mm)	Measured cl (mm)
--		--	--	--
Supplementary information: Supplementary information: The equipment is operated up to 5000 m above sea level as declared by manufacturer. Clearances have been evaluated according to IEC 60664-1: table A.2 with a multiplication factor of 1.48 throughout this report.				

5.4.2.4	TABLE: Clearances based on electric strength test			N/A
Test voltage applied between:		Required cl (mm)	Test voltage (kV) peak/ r.m.s. / d.c.	Breakdown Yes / No
--		--	--	--
Supplementary information: Using procedure 2 clause 5.4.2.3 to determine the clearance.				

5.4.4.2, 5.4.4.5 c) 5.4.4.9	TABLE: Distance through insulation measurements				N/A
Distance through insulation di at/of:	Peak voltage (V)	Frequency (Hz)	Material	Required DTI (mm)	DTI (mm)
--	--	--	--	--	--



--	--	--	--	--	--
Supplementary information: 1). See appended table 4.1.2 for details.					

5.4.9	TABLE: Electric strength tests			P
Test voltage applied between:		Voltage shape (AC, DC)	Test voltage (Vpeak)	Breakdown Yes / No
Basic/supplementary:				
L TO N before fuse		2000VDC	--	No
Reinforced:				
Input to output		4000VDC	--	No
Test after humidity treatment, heating test, and for the first 3 reinforced insulation items after each fault condition test.				
Test were performed on product with each source listed in table 4.1.2.				
The DC voltage source was performed on all testing once in forward and once in reverse.				

5.5.2.2	TABLE: Stored discharge on capacitors				N/A
Supply Voltage (V), Hz	Test Location	Operating Condition (N, S)	Switch position On or off	Measured Voltage (after 2 seconds)	ES Classification
--	--	--	--	--	--
Supplementary information:					
The end system may be pluggable equipment type A. Limit of ES1 applied for mains terminal as accessible part.					
X-capacitors installed for testing are: --					
<input type="checkbox"/> bleeding resistor rating: --Mohm, the bleeding resistors complied with the requirement of Annex G.10.2.					
Notes:					
A. Test Location:					
Phase to Neutral; Phase to Phase; Phase to Earth; and/or Neutral to Earth					
B. Operating condition abbreviations:					
N – Normal operating condition (e.g., normal operation, or open fuse);					
S –Single fault condition (Bleeder Resistor open circuit)					

5.6.6.2	TABLE: Resistance of protective conductors and terminations				N/A
Accessible part	Test current (A)	Duration (min)	Voltage drop (V)	Resistance (Ω)	



5.6.6.2	TABLE: Resistance of protective conductors and terminations				N/A
Accessible part	Test current (A)	Duration (min)	Voltage drop (V)	Resistance (Ω)	
--	--	--	--	--	
Supplementary Information:					

6.2.3.1	Table: Determination of Potential Ignition Sources (Arcing PIS)				N/A
Location	Open circuit voltage After 3 s (V_p)	Measured r.m.s current (I_{rms})	Calculated value ($V_p \times I_{rms}$)	Arcing PIS? Yes / No	
--	--	--	--	--	
Supplementary information: An Arcing PIS requires a minimum of 50 V (peak) a.c. or d.c. An Arcing PIS is established when the product of the open circuit voltage (V_p) and normal operating condition rms current (I_{rms}) is greater than 15. All conductors and devices are considered as PIS.					

6.2.3.2	Table: Determination of Potential Ignition Sources (Resistive PIS)				N/A
Circuit Location (x-y)	Operating Condition (Normal / Describe Single Fault)	Measured wattage or VA During first 30 s (W / VA)	Measured wattage or VA After 30 s (W / VA)	Protective Circuit, Regulator, or PTC Operated? Yes / No (Comment)	Resistive PIS? Yes/No
--	--	--	--	--	--
Supplementary Information: All power dissipating components in primary and secondary circuit are considered as resistive PIS due to the available power as declared by manufacturer. A combination of voltmeter, VA and ammeter IA may be used instead of a wattmeter. If a separate voltmeter and ammeter are used, the product of ($VA \times IA$) is used to determine Resistive PIS classification. A Resistive PIS: (a) dissipates more than 15 W, measured after 30 s of normal operation, <u>or</u> (b) under single fault conditions has either a power exceeding 100 W measured immediately after the introduction of the fault if electronic circuits, regulators or PTC devices are used, or has an available power exceeding 15 W measured 30 s after introduction of the fault.					



B.2.5	TABLE: Input test						N/A
U (V)	I (A)	I rated (A)	P (W)	Fuse #	I fuse (A)	Condition/status	
						EUT working normally	
						EUT working normally	
						EUT working normally	
						EUT working normally	

Supplementary information: The EUT is supplied by one non rechargeable battery.

B.3 & B.4	TABLE: Abnormal operating and fault condition tests							P
Ambient temperature (°C)						25°C, if not specified		—
Power source for EUT: Manufacturer, model/type, output rating ..						—		—
Component No.	Abnormal Condition	Supply voltage, (V)	Test time (min)	Fuse no.	Fuse current, (A)	T-couple	Temp. (°C)	Observation
-Vdc/A								
Output	s-c	240Vdc	10	--	--	--	--	no hazards
--	--	--	--	--	--	--	--	--
--	--	--	--	--	--	--	--	--
--	--	--	--	--	--	--	--	--

Supplementary information:

Test table is provided to record abnormal and fault conditions for all applicable energy sources including Thermal burn injury. Column "Abnormal/Fault." Specify if test condition by indicating "Abnormal" then the condition for a Clause B.3 test or "Single Fault" then the condition for Clause B.4.

- 1) s-c: Short-circuited; o-c: Open-circuited; o-l: Overloaded.
- 2) The test result shown all safeguards remained effective and didn't lead to a single fault condition during abnormal operating condition; In addition all safeguards complied with applicable requirements in this standard after restoration of normal operating conditions.
- 3) The test result showed no Class 1 or 2 energy source become Class 3 level during and after single fault condition.
- 4) The overloaded condition is applied according to annex G.5.3.3.

Winding temperature Limit for T101: 175-10-(45-25)=145°C.

- 5) The same as result test conducted on all fuse sources, all fuse sources see table 4.1.2 for details.



Annex Q.1	TABLE: Circuits intended for interconnection with building wiring (LPS)					N/A
Note: Measured UOC (V) with all load circuits disconnected:						
Output Circuit	Components	U _{oc} (V)	I _{sc} (A)		S (VA)	
			Meas.	Limit	Meas.	Limit
-Vdc,-A						
--	--	--	--	--	--	--
--	--	--	--	--	--	--
Supplementary Information:						

T.2, T.3, T.4, T.5	TABLE: Steady force test					P
Part/Location	Material	Thickness (mm)	Force (N)	Test Duration (sec)	Observation	
Top enclosure	Plastic	1.5	250	--	No hazards	
--	--	--	--	--	--	
Supplementary information: 1). See appended table 4.1.2. Each source of enclosure in table 4.1.2 was applied and passed the relevant tests.						

T.6, T.9	TABLE: Impact tests				N/A
Part/Location	Material	Thickness (mm)	Vertical distance (mm)	Observation	
--	--	--	--	--	
Supplementary information: Each source of enclosure in table 4.1.2 was applied and passed the relevant tests.					

T.7	TABLE: Drop tests				P
Part/Location	Material	Thickness (mm)	Drop Height (mm)	Observation	
Top enclosure	Plastic	1.5	1000	No hazards	
Supplementary information: Each source of enclosure in table 4.1.2 was applied and passed the relevant tests.					



T.8	TABLE: Stress relief test					P
Part/Location	Material	Thickness (mm)	Oven Temperature (°C)	Duration (h)	Observation	
Enclosure	Plastic	1.5	70	7	No visible change	

Supplementary information:

1). See appended table 4.1.2.

Each source of enclosure in table 4.1.2 was applied and passed the relevant tests.



IEC 62368-1			
Clause	Requirement + Test	Result - Remark	Verdict

ATTACHMENT TO TEST REPORT IEC 62368-1 EUROPEANGROUPDIFFERENCESANDNATIONALDIFFERENCES (Audio/video, information and communication technology equipment Part 1: Safety requirements)	
Differences according to.....:	EN62368-1:2014
Attachment Form No.....:	EU_GD_IEC62368_1B
Attachment Originator.....:	Intertek SemkoAB
Master Attachment.....:	Date(2015-08)
Copyright © 2015 IEC System of Conformity Assessment Schemes for Electrotechnical Equipment and Components (IECEE)	

CENELEC COMMON MODIFICATIONS (EN)			
1	NOTE Z1		P
4.Z1	Protective devices included as integral parts of the equipment or as parts of the building installation:		N/A
	a) Included as parts of the equipment		N/A
	b) For components in series with the mains; by devices in the building installation		N/A
	c) For pluggable type B or permanently connected; by devices in the building installation		N/A
5.4.2.3.2.4	Interconnection with external circuit		N/A
10.2.1	Additional requirements in 10.5.1		N/A
10.5.1	RS1 compliance measurement conditions		N/A
10.6.2.1	EN 71-1:2011, 4.20 and methods and distances		N/A
10.Z1	Non-ionizing radiation from radio frequencies in the range 0 to 300 GHz		N/A
G.7.1	NOTE Z1		N/A



IEC 62368-1

Clause	Requirement + Test	Result - Remark	Verdict
--------	--------------------	-----------------	---------

ZB	ANNEX ZB, SPECIAL NATIONAL CONDITIONS (EN)		N/A
4.1.15	Denmark, Finland, Norway and Sweden: Class I pluggable equipment type A marking		N/A
4.7.3	United Kingdom: Torque test socket-outlet BS 1363, and the plug part BS 1363.	The EUT is not directly plug-in equipment	N/A
5.2.2.2	Denmark: Warning for high touchcurrent		N/A
5.4.11.1 and Annex G	Finland and Sweden: Separation of the telecommunication network from earth		N/A
5.5.2.1	Norway: Capacitors rated for the applicable line-to-line voltage (230 V).		N/A
5.5.6	Finland, Norway and Sweden: Resistors used as basic safeguard or bridging basic insulation comply with G.10.1 and G.10.2.	No such device used as safeguard	N/A
5.6.1	Denmark: Protection for pluggable equipment type A; integral part of the equipment		N/A
5.6.4.2.1	Ireland and United Kingdom: The protective current rating is taken to be 13 A		N/A
5.6.5.1	Ireland and United Kingdom: Conductor sizes of flexible cords to be accepted by terminals for equipment rated 10 A to 13 A		N/A
5.7.5	Denmark: The installation instruction affixed to the equipment if high protective conductor current		N/A
5.7.6.1	Norway and Sweden: Television distribution system isolation text in user manual		N/A
5.7.6.2	Denmark: Warning for high touch current		N/A



IEC 62368-1

Clause	Requirement + Test	Result - Remark	Verdict
B.3.1 and B.4	Ireland and United Kingdom: Tests conducted using an external miniature circuit breaker or protective devices included as an integral part of the direct plug-in equipment		N/A
G.4.2	Denmark: Appliances rated ≤ 13 A provided with a plug according to DS 60884-2-D1:2011.		N/A
	Class I equipment provided with socket-outlets provided with a plug in accordance with standard sheet DK 2-1a or DK 2-5a.		N/A
	If a single-phase equipment having rated > 13 A or poly-phase equipment provided with a supply cord with a plug, plug in accordance with the standard sheets DK 6-1a in DS 60884-2-D1 or EN 60309-2.		N/A
	Mains socket outlets intended for providing power to Class II apparatus rated 2,5 A in accordance with DS 60884-2-D1:2011 standard sheet DKA 1-4a.		N/A
	Other current rating socket outlets in compliance with Standard Sheet DKA 1-3a or DKA 1-1c.		N/A
	Mains socket-outlets with earth in compliance with DS 60884-2-D1:2011 Standard Sheet DK 1-3a, DK 1-1c, DK1-1d, DK 1-5a or DK 1-7a		N/A
	United Kingdom: The plug part of direct plug-in equipment assessed to BS 1363	The EUT is not directly plug-in equipment	N/A
G.7.1	United Kingdom: Equipment fitted with a 'standard plug' in accordance with the Plugs and Sockets etc (Safety) Regulations 1994, Statutory Instrument 1994 No. 1768		N/A



IEC 62368-1

Clause	Requirement + Test	Result - Remark	Verdict
G.7.1.1	Ireland: Apparatus provided with a plug in accordance with Statutory Instrument 525: 1997, "13 A Plugs and Conversion Adapters for Domestic Use		N/A
G.7.2	Ireland and United Kingdom: A power supply cord for equipment which is rated over 10 A and up to and including 13 A.		N/A

ZC	ANNEX ZC, NATIONAL DEVIATIONS (EN)		N/A
10.5.2	Germany: Cathode ray tube intended for the display of visual images, authorization or application of type approval and marking.		N/A
F.1	Italy: The power consumption in Watts (W) indicated on TV receiver and in instruction for use		N/A
	TV receivers provided with an instruction for use, schematic diagrams and adjustments procedure in Italian language.		N/A
	Marking for controls and terminals in Italian language.		N/A
	Conformity declaration according to the above requirements in the instruction manual		N/A
	First importers of TV receivers manufactured outside EEC previous conformity certification to the Italian Post Ministry and Certification number on the backcover.		N/A



Attachment 1

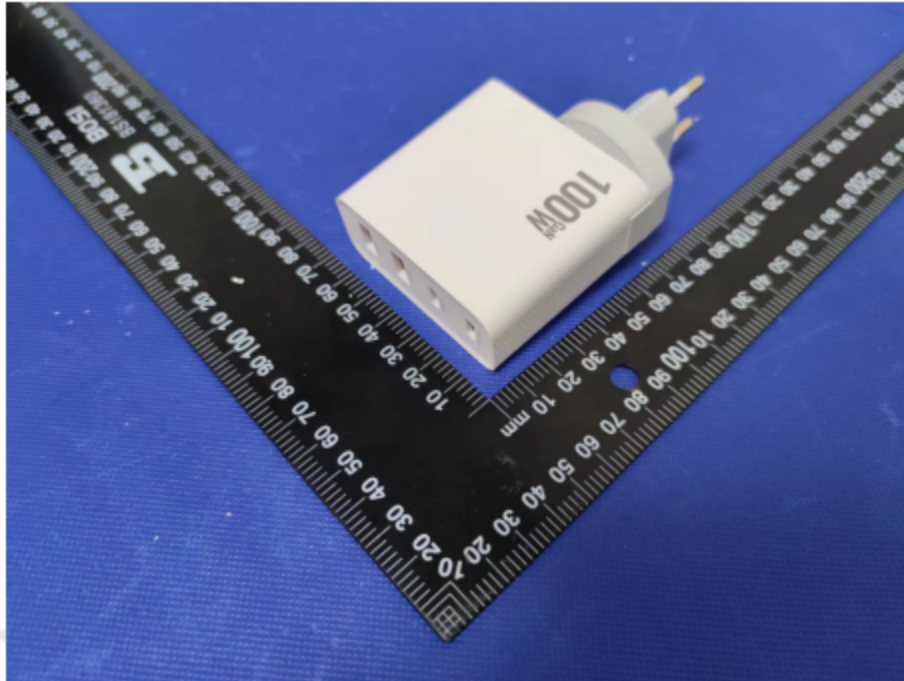


Photo 1

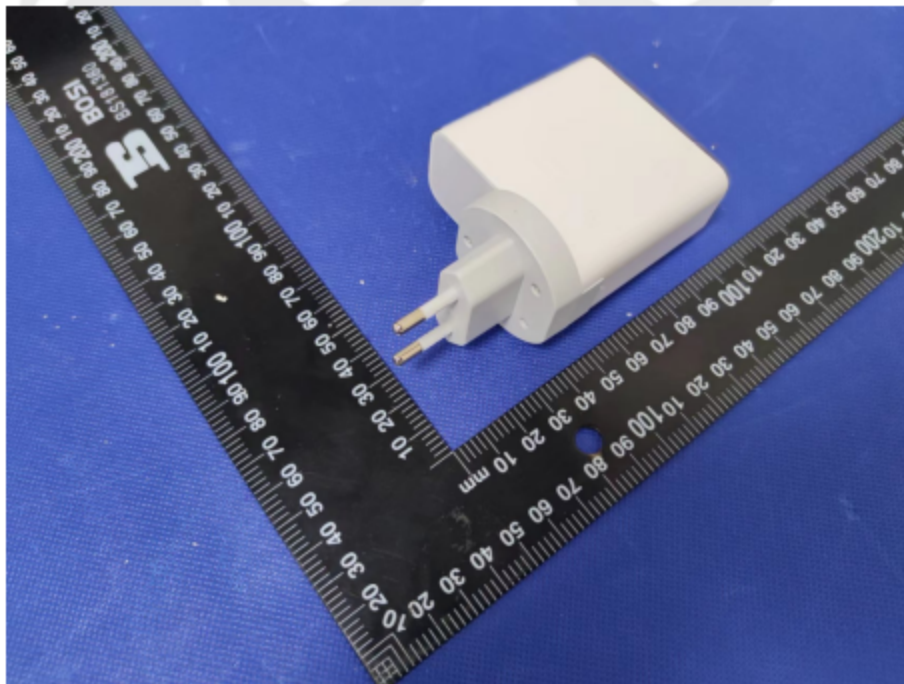


Photo 2



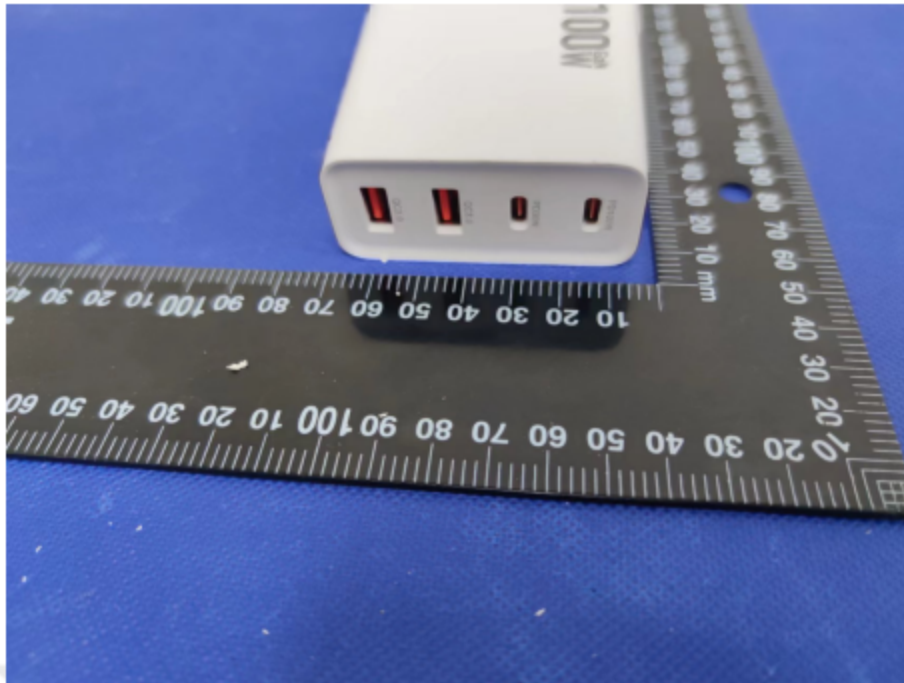


Photo 3

=====END OF REPORT=====

