



**Repair**



**e:m**  
COLORS EVEN MORE



# Brazilian Nut Silky Shampoo & Conditioner

---



## Brazil fruit seeds and caffeine

---

The seeds of the Brazilian blowout contain 14% protein, 11% carbohydrates, 67% fat and rich in selenium, magnesium and vitamin B1, which are Mineral elements required for the scalp hair follicle circulation system and containing vitamin microfiber to strengthen the damaged structure of the hair. Caffeine makes the hair stronger and shinier.

## Natural fruit oils and squalane

---

Moisturizes and locks water, repairs hair from the inside out, and replenishes nutrients at once, smooths the damaged hair after dyeing and perming. Contains olea europaea, wheat germ oil, camellia japonica seed oil, isatis tinctoria seed oil, and macadamia ternifolia seed oil.

## Keratin and vitamin E

---

Protective, weight-adding and conditioning effects on hair helps to restore hair growth or prevent abnormal hair loss

## Multiple ceramides

---

Ceramides enhance the scalp barrier, quickly replenish the scalp and hair with abundant moisture, promote healthy scalp circulation, and avoid various external damage. Addition of palm kelp extract antioxidant

## Betaine, supple and glossy

---

GERMAN PROFESSIONAL PERSONAL CARE BRAND

**e:m**  
COLORS EVEN MORE





---

## Brazilian Blowout Shiny Repair Shampoo

### Brazilian Blowout Shiny Repair Shampoo

---



The shampoo foam is delicate and dense, moist and supple after shampooing, free of silicone oil. With Brazilian blowout and a variety of fruit oil ingredients, it repairs damaged hair, brightens hair condition. The shampoo can regulate the scalp environment and help restore hair growth while combining with vitamin E and caffeine extract. Multiple ceramides enhance the scalp barrier force for better nutrient absorption, both for the scalp and the hair surface (scales) to promote nutrient int roduction.

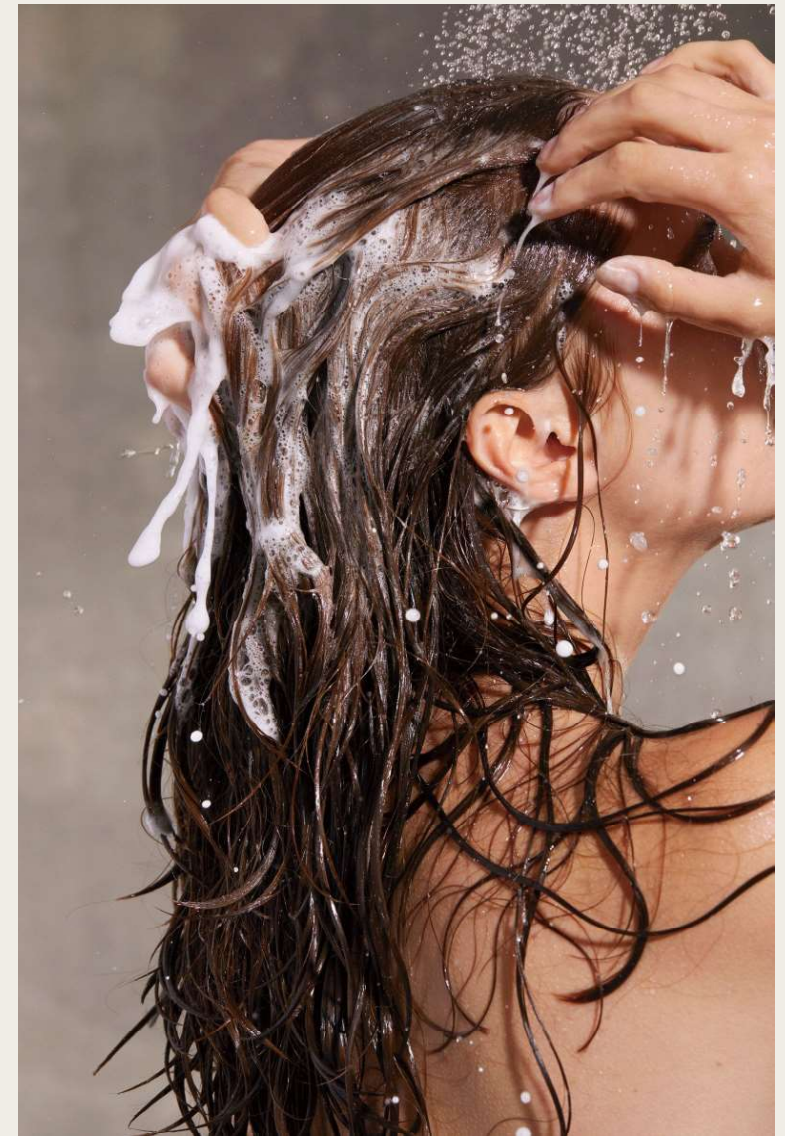
### Brazilian Blowout Shiny Repair Conditioner

---



Repairs hair damage by hydrating the hair core while repairing the hollowness of the hair. Thick and dense texture of the conditioner, wrapped in a variety of fruit oils and plant extract ingredients. Every time you shampoo, you can feel the moisture straight to the end of your hair, moisturising and nourishing the hair, solving the problem of frequent perming and dyeing, severe damage and dryness, and creating shiny, glamorous hair.

---







**e:m**  
COLORS EVEN MORE



---

## **Neutral vanilla gourmet fragrance of nuts and coffee**

The top note is sweet and sour with lemon, vanilla is sweet but not very cloying, similar to a nutty neutral fragrance. The middle note is a light lily of the valley with a slightly tart hawthorn, and the fragrance of vanilla is still very impressive. The base notes are still an overall vanilla gourmet note along with vanilla and sandalwood with original creamy notes.

**Top notes: bergamot, pink pepper**

**Middle notes: hawthorn fruit, lily of the valley, heliotrope**

**Base notes: ambrette, Peruvian balsam, vanilla, sandalwood**

---