

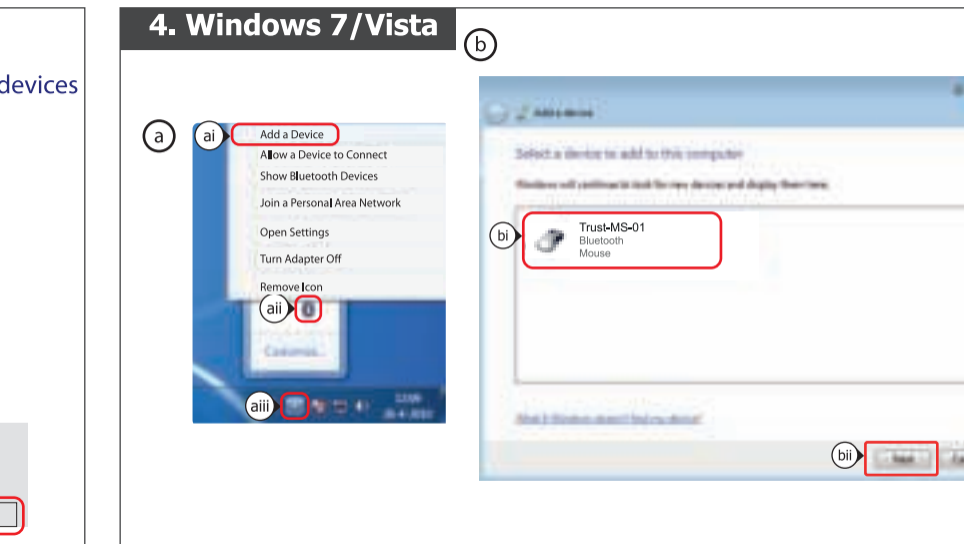
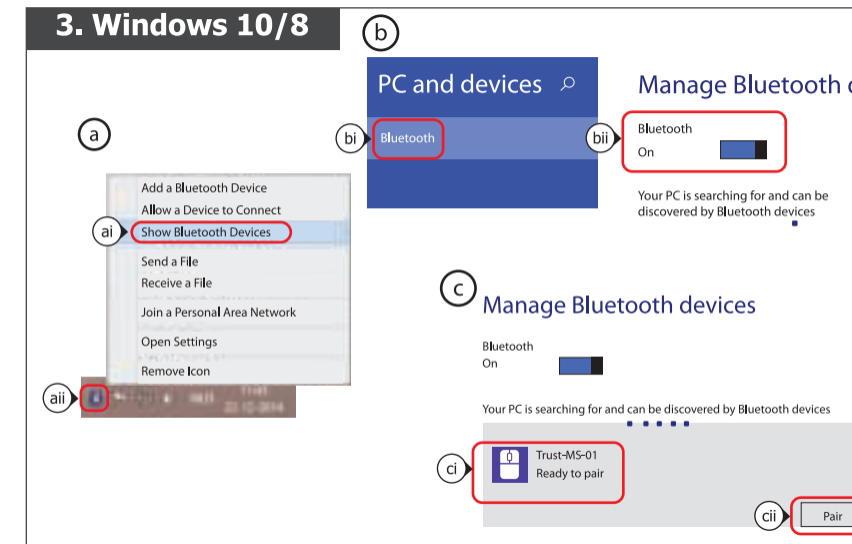
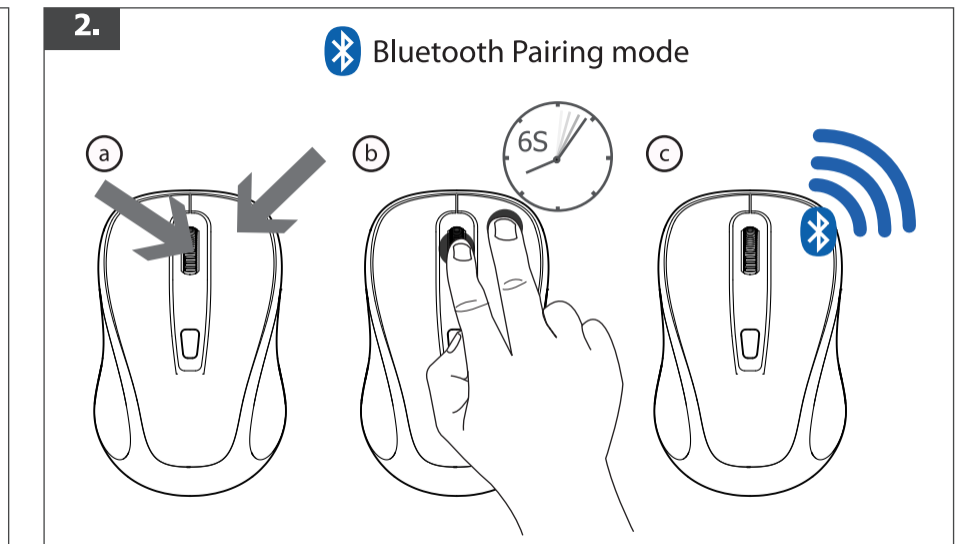
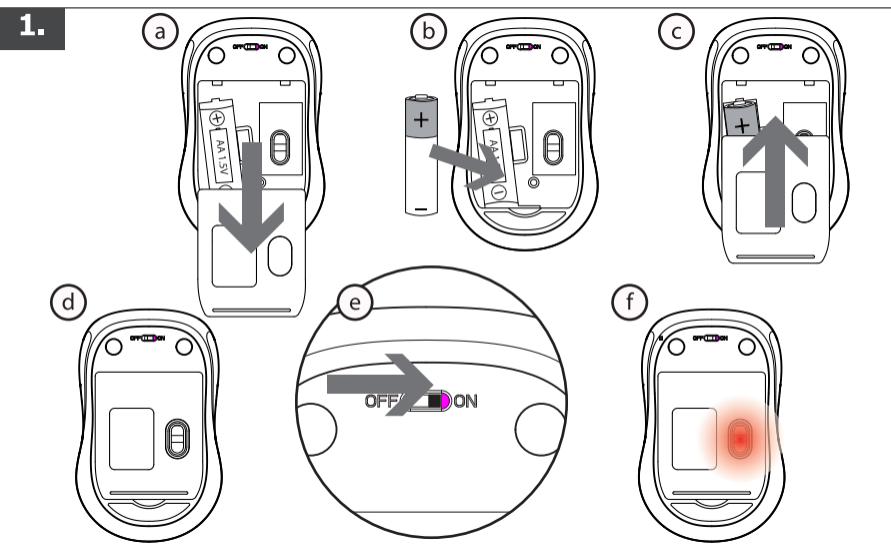
Frequently Asked Questions

<http://www.trust.com/21192/faq>

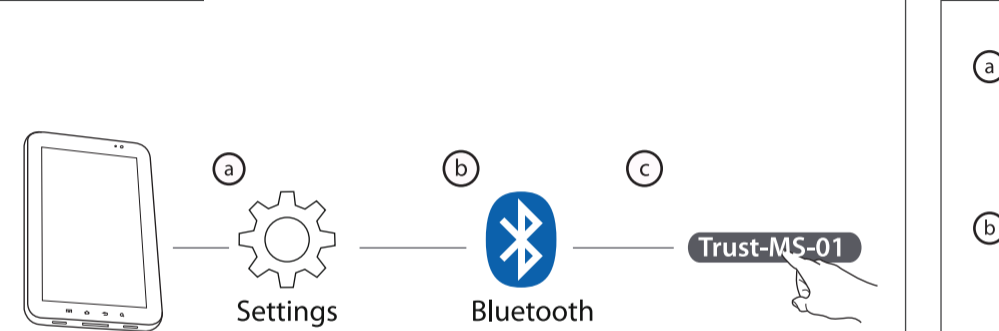
© 2016 Trust International B.V. - All rights reserved
Laan van Barcelona 600
3317DD, Dordrecht, NL



Xani Bluetooth Mouse



5. Android



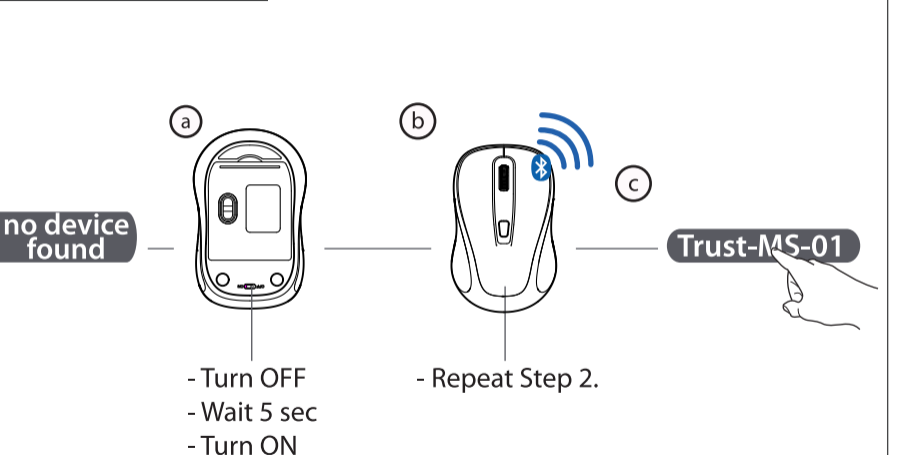
6. Mac

a Bluetooth: Off
Turn Bluetooth On
Open Bluetooth Preferences...

b Bluetooth: On
Turn Bluetooth Off
Devices
Bluetooth Keyboard
Send a file to Device...
Browse files on Device...
Open Bluetooth Preferences...

c Bluetooth: On
Bluetooth Keyboard
Not Connected
Trust-MS-01

7. Troubleshoot



8. Troubleshoot Windows

a PC and devices

ai Bluetooth

aii Manage Bluetooth devices
Bluetooth On
Your PC is searching for and can be discovered by Bluetooth devices
Trust-MS-01 Paired
Remove Device

b Trust International
Sleep
Shut down
Restart

c Manage Bluetooth devices
Bluetooth On
Your PC is searching for and can be discovered by Bluetooth devices
Trust-MS-01 Ready to pair
Pair

9. Troubleshoot Android

a Settings

b Bluetooth

c Bluetooth
On
Your device (Galaxy S8 edge) is currently visible to nearby devices.
Paired devices
Trust-MS-01

d Bluetooth
On
Your device (Galaxy S8 edge) is currently visible to nearby devices.
Paired devices
Trust-MS-01

e Bluetooth
On
Your device (Galaxy S8 edge) is currently visible to nearby devices.
Paired devices
Trust-MS-01

f Bluetooth
On
Your device (Galaxy S8 edge) is currently visible to nearby devices.
Paired devices
Trust-MS-01

10. Troubleshoot Mac

a Bluetooth: On
Turn Bluetooth Off
Devices
Bluetooth Keyboard
Send a file to Device...
Browse files on Device...
Open Bluetooth Preferences...

b Bluetooth: On
Turn Bluetooth Off
Now discoverable as "Test's Macbook"
Trust-MS-01 Not Connected

c Are you sure you want to remove "Trust-MS-01"?
You have to pair this device again if you want to use it later.
Cancel Remove

d Pairing Request from: Trust-MS-01
To pair with the device, click Pair to complete the pairing process.
To reject pairing with the device, click Cancel.
Ignore this Device Cancel Pair

e Bluetooth: On
Turn Bluetooth Off
Now discoverable as "Test's Macbook"
Trust-MS-01 Connected