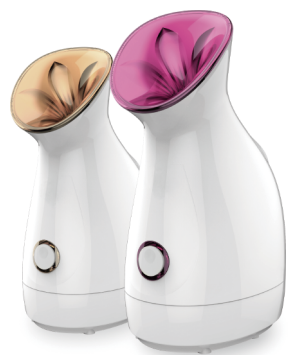
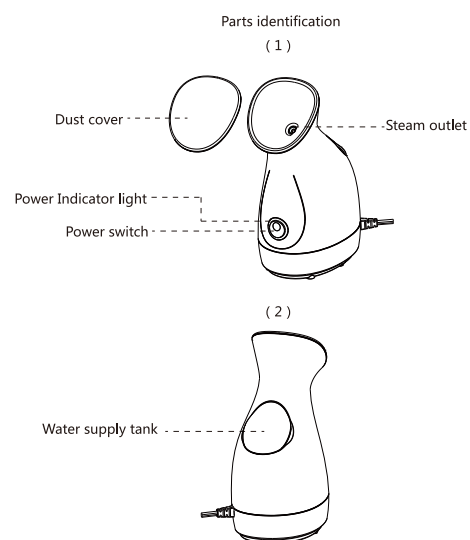


## Facial Ionic Steamer User Manual



Appearance patent application number:201530229124.2

Dear Sir/Madam:  
Thank you for purchasing our product. A facial steamer is a great way to pamper yourself as your skin feels fresh and rejuvenated, and leaves you with a glowing complexion!  
Before operating this type of facial steamer, please read the instructions and suggestions carefully to ensure the best possible performance.



01

### Three tips to look after your skin

**Cleaning Care**  
Cleaning your face and remove makeup before you start using facial steamer. Prevent bacteria irritate the skin.

**Steaming Care**  
Facial steamer can allow the pores to open fully, help the steam unclog the pores cleanse your skin before you steam to remove any dirt or grease. Increase blood flow and help your skin to look its best.

**Nutritional Care**  
When you have finished steaming carefully exfoliate the skin, it is a great time to apply face mask and moisturiser will help lock in moisture from the steam, and prevent bacteria from entering open pores.

#### CAUTION:

● Use only distilled water or purified water.

Since the service life of the appliance may shorten depending on water quality, the use of distilled water or purified water is recommended.

The following types of water cannot be used due to its high mineral content.

Tap water, mineral water, Geothermal water, Acidulated water, Ionized alkaline water.

● Do not mix with anything

Do not mix the water any other substance, such as lotion, aromatic oil, etc, otherwise, it may cause burns, malfunctions, or shorten the life of the main unit.

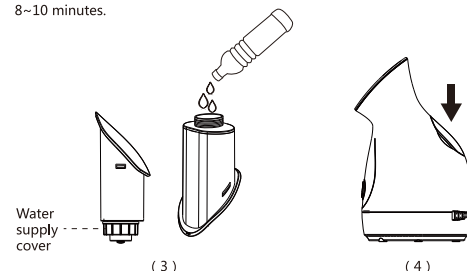
02

### Preparation before use

When the appliance is used for the first time, some water may remain around the water supply tank. This is residual water used for inspection in the factory, and it is normal.

1. Place the main unit on a flat surface. Place the appliance on a flat, level and solid surface during use.

2. Pull the water supply tank out of the unit. Turn and open the water supply cover and fill the water supply tank with water (use only distilled water or purified water) and close the water supply cover. The steam lasts for about 8~10 minutes.



3. Push the water supply tank into the main unit until it is flat with main unit. Water is supplied to the main unit and the water in the water tank decreases when the water supply tank is attached to the main unit.

### How to use the steamer

1. Plug the electrical plug into the power outlet.  
2. Slide the power switch upwards to turn on the appliance, the steam outlet will release blue light once the appliance turns on. The steam is released after

03

about 40 seconds. A little bit of hot water may be sprayed out when the main unit starts emitting steam. This is not a malfunction.

3. Steam facial care  
① Keep your face at least 20cm away from the nozzle. To ensure that the steamer covers your entire face, direct the steam to the top of your chin.  
② It will release steam about 40 seconds after turning on the appliance, the steamer releasing time is the fastest one among all the steamers.

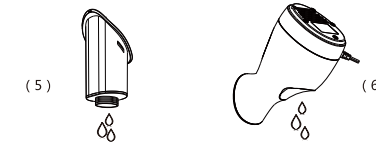
③ When the remaining water is low, the way that the steam is emitted will change. This is not a malfunction. If there is no water in the water supply tank, no steam will emit from the steam outlet. Please turn off the appliance and add water after allowing the appliance to cool down for at least 10 minutes.

④ Special notes: If there is no water in the water supply tank the appliance will turn off automatically, the temperature controller will cut off as well, if you add water immediately the appliance cannot work as usual it needs to wait two minutes, the temperature controller will automatically reset once temperatures fall off, and then the appliance will work as normal. This is not a malfunction.

4. Turn off the appliance  
Slide the power switch downwards to turn off the appliance. After using the appliance take care of your skin by moisturizing with lotion, performing cleaning, etc. if you do not take care of your skin, water will evaporate from it, making it dry.

### After use

Be sure to discard the water in the tank and the main unit after each use. Failure to do so may cause adhering of water stains or unusual odors.



04

1. Leave the appliance alone to cool for at least 10 minutes.  
2. Remove the power plug from the electrical outlet. Remove the water supply tank and discard the water in the water supply tank and wipe away any water on the surface of the water supply tank.  
3. Discard the water from the water outlet as shown on the diagram. When disposing of water, hold the main unit so that your hands are not exposed to the hot water, otherwise it may result in burns.  
4. After use, push the water supply tank in the main unit until it clicks.  
5. Remove all the water in the water supply tank and main unit when not using the main unit for extended periods of time (several weeks or more). Store the main unit only after sufficiently drying.

#### Cleaning

1. Fill the water supply tank with water and close the water supply cap.  
2. Attach the water supply tank to the main unit, shake the appliance horizontally 3 to 4 times, shake the appliance gently without tilting it.  
3. Remove the water supply tank from the main unit and discard the water in the main unit. Return the appliance to a flat position and repeat the step above 2 to 3 times.

#### Cleaning and maintenance

1. Using a dry cloth to wipe away any dust off the power cord once a month.  
2. If the water supply cap seal to float while turning the seal by hand and match the raised edge on the water supply seal with the water supply cap.

### Safety precautions

To ensure proper operation of this appliance please carefully read all of the safety precautions before use. The safety precautions are provided to help you with correct and safe operation of the appliance so that you avoid injuries to yourself and others as well as damage to property. Always follow these important safety precautions.

The safety precautions are defined as follows:

▲ **WARNING:** This message indicates potentially hazardous actions and situations, which, if not avoided, could result in death or serious injury.  
CAUTION: This message indicates potentially hazardous actions and situations,

05

which, if not avoided, could result in personal injury or property damage.

#### ▲ WARNING:

● Do not use this product near a full bath, sink, or any vessel containing water.  
● Do not use this appliance by persons who are unable to feel, otherwise, it may result in burns or scalding.

● Immediately stop using if you experience any pain or abnormalities on your skin or throughout your body.

● The following persons should not use this appliance:

1. Women who are pregnant or currently in a menstrual period (may cause skin problems due to hormone imbalance)  
2. Persons with allergies, skin problems, such as dermatitis, severe sunburns.  
3. Person with skin injuries, eczema, swelling, etc.  
4. Person who are recovering after operation.

● Do not touch any metal on the electrical plug when plugging in the plug, otherwise, it may cause accident.

● Unplug after use, otherwise, it may cause personal injury or accident.

● Turn the power off and unplug when not using, otherwise, it may result in fire or ignition.

● Periodically clean to ensure dust does not accumulate on the plug.

● Always ensure the appliance is operated on an electric power source matched to the rated voltage indicated on the appliance. Ensure that the plug is plugged in completely; otherwise, it may result in fire, electric shock, burns or scalding.

● Do not use the appliance under the following conditions:

1. When plug is loose in the power outlet.  
2. Do not damage, modify, unreasonably bend, pull or twist the cord.  
3. Do not place anything heavy on the cord and do not pinch the cord.  
4. Do not let pins or dirt get attached to the end of the appliance plug.  
● Do not plug or unplug the appliance plug into power outlets or use the appliance with wet hands.

● Do not use or store the appliance in the bathroom or in other rooms with high humidity. Humidity may cause the insulation to fail and may result in electric shocks or fire.

06

● Keep away from infants. Do not allow infants to use the appliance. Do not allow a child to lick the appliance plug. Doing so may cause injury, electric shock or burns.

● Do not use the appliance near flammable substances (alcohol, thinner, benzene, enamel remover, aerosol sprays, etc), otherwise, it may result in explosion or fire.

● Do not immerse the appliance. If the appliance sustains damage from being dropped or hit, please do not continue to use it.

● Do not insert objects in the steam outlet, and do not block the steam outlet, otherwise, it may result in explosion.

● Do not attempt to modify, disassemble, or repair the appliance.

● Contact the store where the appliance was purchased for repair, otherwise, it may cause injury due to fire or abnormal operation.

#### ▲ CAUTION

● When disposing of the water after use, hold the appliance so that your hands are not exposed to the hot water.

● Use only distilled water or purified water. Failure to do so may result in equipment malfunction, or in serious cases, burns or scalding.

● Keep your hands away from the steam when operating the power switch. Keep your face and hands at least 20cm from the nozzle.

● Do not tilt, shake, or move the appliance during use or within 10 minutes after use. Doing so may cause hot water to spill out or a large volume of steam to be emitted from the steam outlet.

● Use on a flat surface. Not for handheld use.

● Do not attach, remove or install water supply tank during use or within 10 minutes after use. Steam continues to be emitted after the power has been cut off. Stay away from the nozzle immediately after use.

● Except when cleaning, do not shake the main unit when it contains water. Please do not drain the water through the steam outlet otherwise it may cause hot water to spray out when the power is turned on, as water droplets collect in the steam outlet. This can cause burns or scalding.

07

● This appliance is not intended for use by persons (including children) with reduced physical, sensory or mental capabilities, or lack of experience and knowledge, unless they are being supervised or have been given instructions concerning use of the appliance by a person responsible for their safety.  
● After use, the appliance should be cleaned to avoid the accumulation of grease and other residues.  
● Properly dispose the package of the appliance, keep the package away from infants to prevent suffocation of infants from happening.

#### Warning regarding your skin

Initially, the appliance should only be used once a day, each time use cannot exceed 10 minutes. For normal skin, a maximum of 2 to 3 times a week, and for sensitive skin, one time per week is preferred.

Stop using the appliance if skin troubles occur while using the steam.

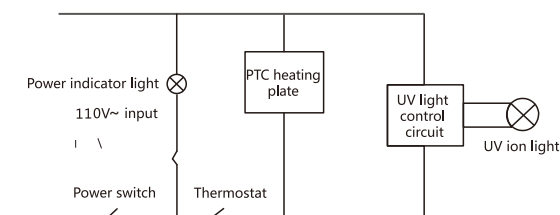
Basic skin care is required after using this steamer. Not performing skin care after using the steamer may cause the moisture in your skin to evaporate easily, drying out your skin.

08

### Specifications

Model	MK-FS60	Voltage	110V~
Power	280W	Frequency	60HZ
Capacity	70ml	/	
Execution Standards	EN60335-1 EN60335-2-23 EN55014-1 EN55014-2		

### Electrical schematic



### FAQ

Questions	Reason	Solution
No heating	Switch is not turned on	Turn on the switch
	Machine does not have connected to power	Connect to power
	Household power fuse tripped	Check power fuse and reset
No steam	Little or no water in the water tank	Promptly fill with water
	Contact failure with the water tank	Remove to reinsert the tank

09

### Manufacture's Limited Warranty

The Manufacture of Facial Steamer warrants to the original purchaser of this product from an authorized reseller or distributor that this product will be free from defects in material and workmanship under normal use and service for 1 year after date of purchase. Manufacture Facial Steamer will, at its option, repair or replace with new or refurbished product. The manufacture reserves the right, before having any obligation under this limited warranty, to inspect the damaged product, and all costs of shipping the damaged product for inspection and warranty service shall be borne solely by the purchaser.

The manufacture's limited warranty is valid only in accordance with the following conditions:

The product is purchased directly from manufacturer or an authorized reseller. The warranty is not transferable, only the original purchaser is covered by this warranty.

This warranty is void when the product is used in a commercial or institutional use.

This warranty is void if the product has been subject to misuse, abuse, negligence, unauthorized modification or repair, or accident. Normal wear and tear are not covered by this warranty.

Purchaser must present acceptable proof of original receipt for the product. This warranty does not affect any other legal rights you may have by operation of law.

10

