



ROHS TEST REPORT

Applicant: Shanghai Homepower Industries Co., Ltd.
Address: Room 518, litong building jiudu RD 349, Songjiang District Shanghai, china
Manufacturer: Shanghai Homepower Industries Co., Ltd.
Address: Room 518, litong building jiudu RD 349, Songjiang District Shanghai, china

The following sample(s) was /were submitted and identified on behalf of the clients as:

Sample name: led Toilet Light
Model: TL-002
Trade Name: N/A
Sample Received Date: Mar.28,2020
Testing Period: Mar.28,2020- Apr.07,2020
Test Requested: Selected test (s) in the selected parts as requested by client with the RoHS2.0 Directive 2011/65/EU Annex II (EU) 2015/863 as last amended by Directive (EU) 2017/2102.

Test Method: Please refer to next page(s).

Test Result: Please refer to next page(s).

Signed for and on behalf of




Steven/ Approved Signatory



Test Content:

Test Item(s)	Test Method	Reference	Unit	Limit	MDL
Cadmium(Cd)	IEC 62321-5:2013	ICP-OES	mg/kg	100	2
Lead(Pb)	IEC 62321-5:2013	ICP-OES	mg/kg	1000	2
Mercury(Hg)	IEC 62321-4:2013+AMD1:2017	ICP-OES	mg/kg	1000	2
Hexavalent Chromium(CrVI) (Metal)	IEC 62321-7-1:2015	UV-Vis	µg/cm ²	0.13	0.1
Hexavalent Chromium(CrVI) (Nonmetal)	IEC 62321-7-2:2017	UV-Vis	mg/kg	1000	8
PBBs (Next form)	IEC 62321-6:2015	GC-MS	mg/kg	1000	5
PBDEs (Next form)	IEC 62321-6:2015	GC-MS	mg/kg	1000	5
Dibutyl Phthalate(DBP)	IEC 62321-8:2017	GC-MS	mg/kg	1000	30
Butyl benzyl phthalate (BBP)	IEC 62321-8:2017	GC-MS	mg/kg	1000	30
Di-(2-ethylhexyl) Phthalate(DEHP)	IEC 62321-8:2017	GC-MS	mg/kg	1000	30
Diisobutyl phthalate (DIBP)	IEC 62321-8:2017	GC-MS	mg/kg	1000	30

PBBs		PBDEs	
Monobromobiphenyl	Hexabromobiphenyl	Monobromodiphenyl ether	Hexabromodiphenyl ether
Dibromobiphenyl	Heptabromobiphenyl	Dibromodiphenyl ether	Heptabromodiphenyl ether
Tribromobiphenyl	Octabromobiphenyl	Tribromodiphenyl ether	Octabromodiphenyl ether
Tetrabromobiphenyl	Nonabromobiphenyl	Tetrabromodiphenyl ether	Nonabromodiphenyl ether
Pentabromobiphenyl	Decabromobiphenyl	Pentabromodiphenyl ether	Decabromodiphenyl ether



Sample Description:

1	Plastic enclosure	Plastic
2	Metal plate	metal
3	PCB	PCB
4	spring	metal
5	Metal pin	metal
6	Silicon rubber	Silicon rubber
7	Internal wire core	metal
8	Internal wire insulation layer	PVC
9	Tin solder	solder
10	Screw	metal



Test Result:

Test Item(s)	NO.1	NO.2	NO.3	NO.4	NO.5
Cadmium(Cd)	N.D.	N.D.	N.D.	N.D.	N.D.
Lead(Pb)	N.D.	N.D.	N.D.	N.D.	N.D.
Mercury(Hg)	N.D.	N.D.	N.D.	N.D.	N.D.
Hexavalent Chromium (CrVI)	N.D.	N.D.	N.D.	N.D.	N.D.
PBBs	N.D.	--	N.D.	--	--
PBDEs	N.D.	--	N.D.	--	--
Dibutyl Phthalate (DBP)	N.D.	--	N.D.	--	--
Butyl benzyl phthalate (BBP)	N.D.	--	N.D.	--	--
Di-(2-ethylhexyl) Phthalate(DEHP)	N.D.	--	N.D.	--	--
Diisobutyl phthalate (DIBP)	N.D.	--	N.D.	--	--

Test Item(s)	NO.6	NO.7	NO.8	NO.9	NO.10
Cadmium(Cd)	N.D.	N.D.	N.D.	N.D.	N.D.
Lead(Pb)	N.D.	N.D.	N.D.	N.D.	N.D.
Mercury(Hg)	N.D.	N.D.	N.D.	N.D.	N.D.
Hexavalent Chromium (CrVI)	N.D.	N.D.	N.D.	N.D.	N.D.
PBBs	N.D.	--	N.D.	--	--
PBDEs	N.D.	--	N.D.	--	--
Dibutyl Phthalate (DBP)	N.D.	--	N.D.	--	--
Butyl benzyl phthalate (BBP)	N.D.	--	N.D.	--	--
Di-(2-ethylhexyl) Phthalate(DEHP)	N.D.	--	N.D.	--	--
Diisobutyl phthalate (DIBP)	N.D.	--	N.D.	--	--

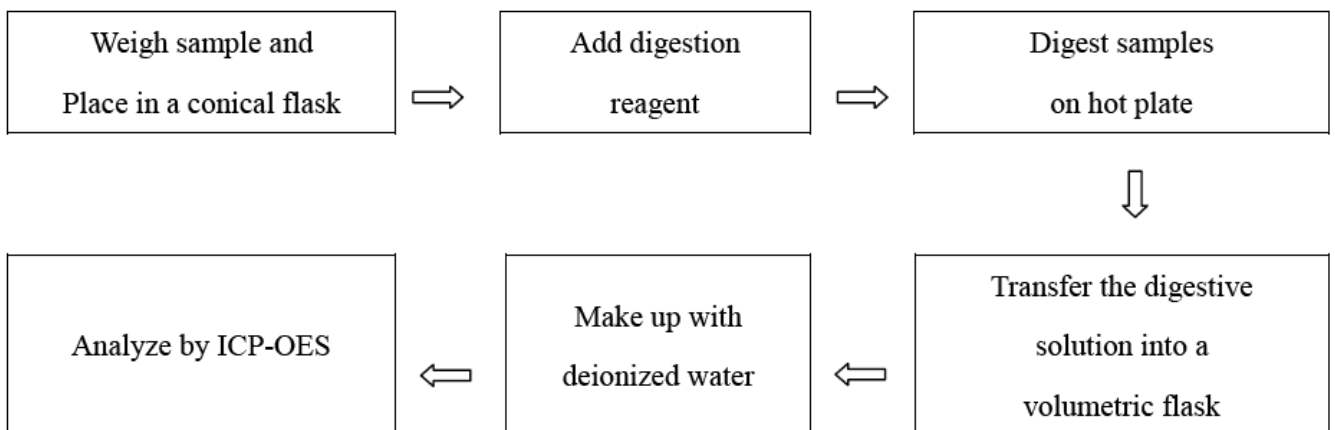


Note:

- 1. mg/kg= ppm
- 2. N.D.= Not Detected(<MDL)
- 3. MDL = Method Detection Limit
- 4. -- = No Testing
- 5. “*” According to 2011/65/EU Annex III point 6(c)Copper alloy containing up to 4 % lead by weight
- 6. when Cr(VI) in a sample is detected below the 0.10 µg/cm² LOQ (limit of quantification), the sample is considered to be negative for Cr(VI). Since Cr(VI) may not be uniformly distributed in the coating even within the same sample batch, a "grey zone" between 0.10 µg/cm² and 0.13 µg/cm² has been established as "inconclusive" to reduce inconsistent results due to unavoidable coating variations. In this case, additional testing may be necessary to confirm the presence of Cr(VI). When Cr(VI) is detected above 0.13 µg/cm², the sample is considered to be positive for the presence of Cr(VI) in the coating layer. unavoidable coating variations may influence the determination Information on storage conditions and production date of the tested sample is unavailable and thus Cr(VI) results represent status of the sample at the time of testing.

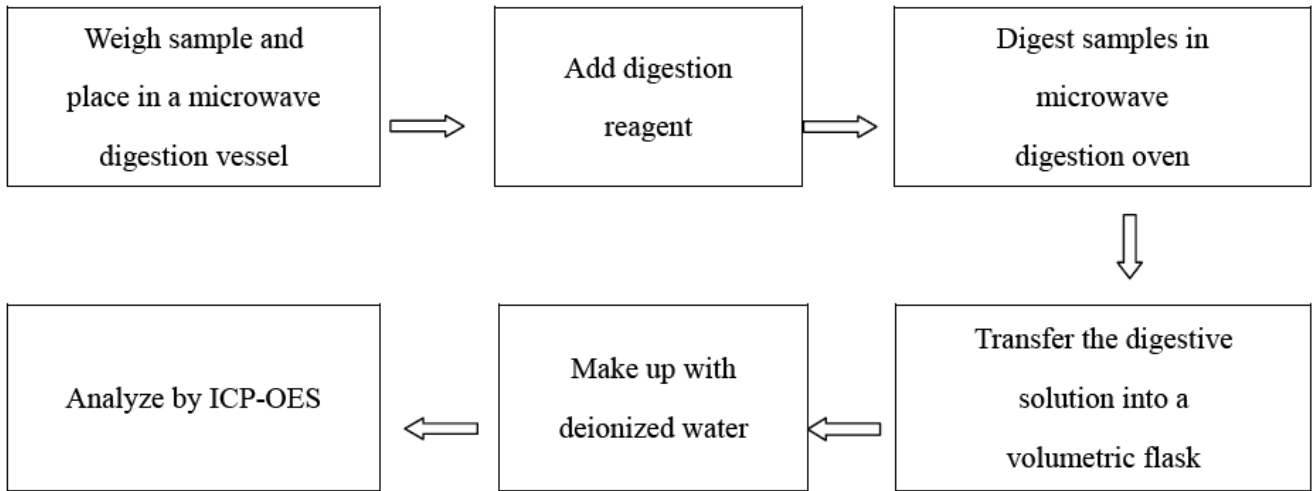
Test Process:

1.Test for Cd/Pb Content

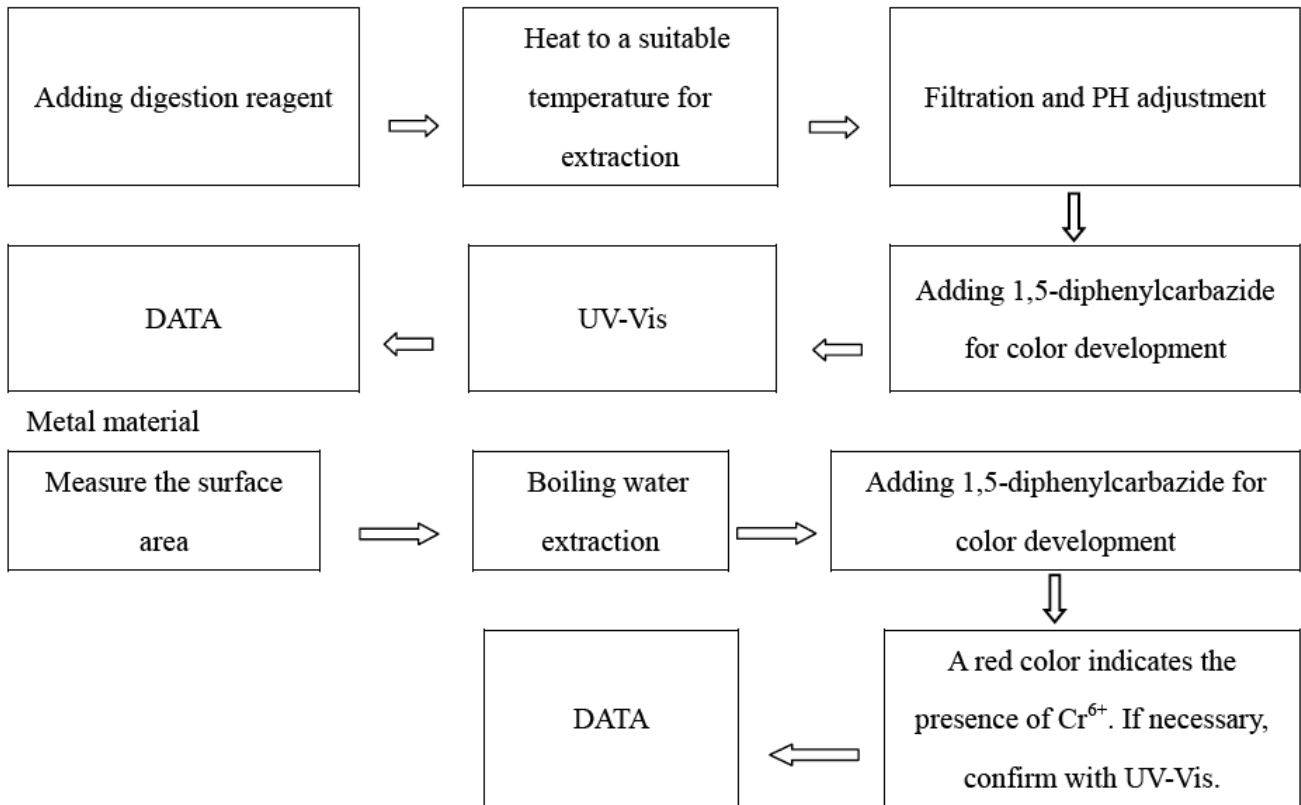




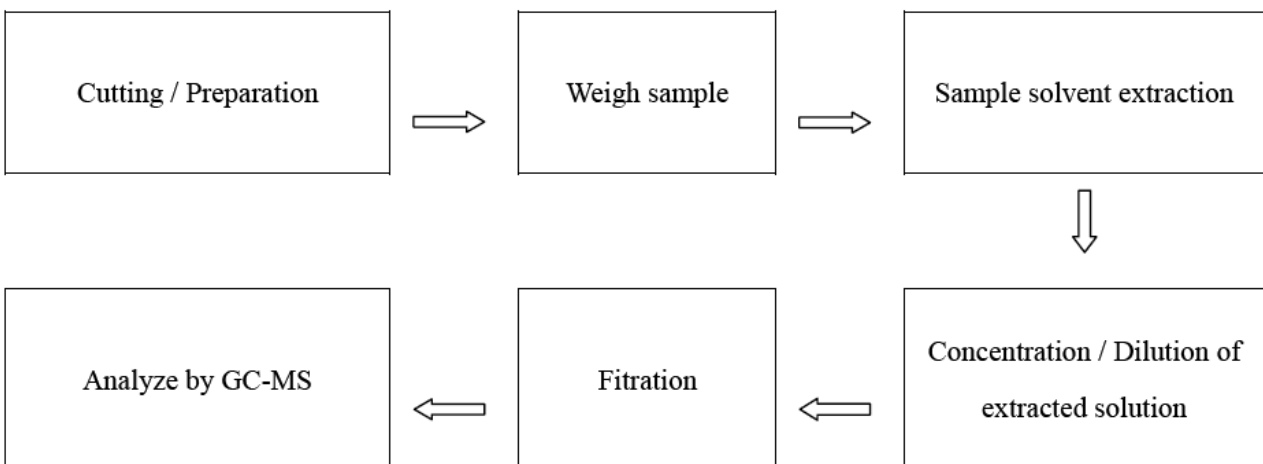
2. Test for Hg Content



3. Test for Chromium (VI) Content



4. Test for DBP, BBP, DEHP, DIBP, PBB, PBDE Content



Attachment 1 Photo documentation

Photo 1



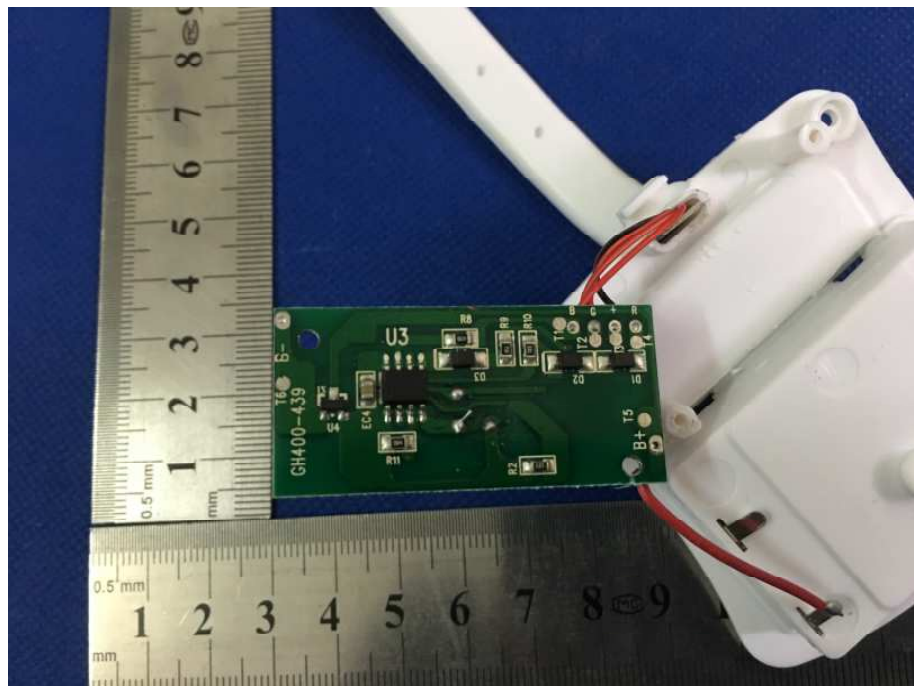
Photo 2



Photo 3



Photo 4



*****END OF EPORT*****