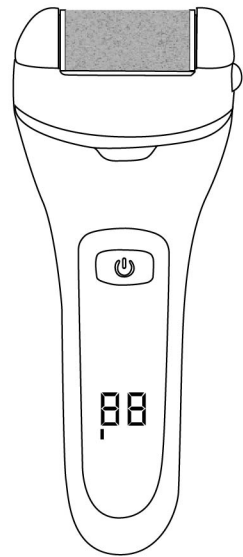


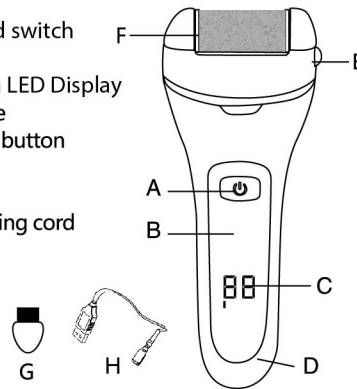
87X125MM

CALLUS REMOVER INSTRUCTION



Components name

- A. On-Off / 2-level speed switch
- B. ABS body
- C. Battery Capacity with LED Display
- D. USB charging interface
- E. Roller head- changing button
- F. Roller head
- G. Cleaning brush
- H. Worldwide USB charging cord



Warning

Please read this manual carefully before using the product and keep it for future reference.

- 1.This product can not be used as toys for young children.
- 2.Children need to be used under the guidance of an adult.
- 3.This product should not be used in special environments such as corrosive or explosive gases.
- 4.Do not disassemble, repair, modify the product by yourself.

- 5.Do not store in a place exposed to direct sunlight or stored in an environment that is too hot or humid.
- 6.Keep away from water when charging. Unplug after charging is complete.
- 7.Do not submerge the product in water for a long time. Please rinse under running water.
- 8.Only suitable for old callouses hard and thick dead skin, such as heel. Please do not use this product on normal skin.
- 9.For hygienic reasons, it is recommended that one roller head should be used for one person, preferably not shared with others.
- 10.Please use this product after consulting your doctor if you have any skin problems or other medical problems.
- 11.Please don't stay in one area for more than 3 seconds while using, please move to use it.
- 12.Do not use if the skin is red, irritated, infected.
- 13.Do not use this product on sputum, ulcers or wounds on the skin.

IMPORTANT: To prevent any accident or damage to your body or product, please keep away from any yarn, clothing, hair and eyelash etc !

Use Instructions

Charging

Notice: Please fully charge before using this product for the first time.

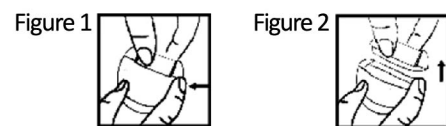
Charging step: Plug one end of the charging cable into the body charging hole and another end to the USB connector. The charging indicator will light up while charging. After 3 hours charging, the indicator light will stop flashing when charging is completed (charge time should not exceed 12 hours).

Roller head disassembly & assembly

- 1.Replace the roller head as follows. Choose the suitable roller head according to the roughness of the skin and the expected effect. To replace the roller head, ensure the unit is turned off and remove from the unit by pressing the head-changing button on the side of the unit. Gently pull the roller away from the unit.

(Please refer to Figure 1 and Figure 2)

- 2.Place the new roller in the unit by pressing in the pins on either side of the roller head and inserting the head into the device until you hear a sound. Please confirm the roller head is securely attached to the device before use.



Callus removal

This product is designed for dry and rough hand, foot or heel skin and should not be used in other parts of the body.

- 1.Ensure the product is charged and has enough power.
- 2.Clean or soften the skin, then dry the skin to ensure the best results. Do not use this product if there is a wound or bleeding on your skin.
- 3.Gently turn the roller head to stay in the dry and rough skin area for 2-3 seconds. Do not press too tight, let the roller head gently slide over the skin. If the press is too tight, the product will stop working.
- 4.During use, you can stop and check if you are satisfied with the condition of callus removal. If not, you can stay on this part for another 2-3 seconds and check again.

- 5.Rinse the skin or use a wet towel to clean the skin again.
- 6.After using it, please turn off the device and clean this product in time. Store this product in a dry, ventilated, cool place.

3 different roller heads

Fine Roller Head - Suitable for the callus of hands, cocked dead skin and more delicate skin care.

Regular Roller Head - Suitable for the newly formed callus and normal skin care.

Coarse Roller Head - Suitable for stubborn thick callus and dead skin.

Technical parameter

Charging voltage: 5V=
Charge time: Appr. 3 hours
Use time: Appr. 1 hours

Environment-friendly & Recycle

Please remove the battery from product when you decide to abandon product, and put battery in specified recycle place.

- 1.Let the product work until no battery.
- 2.Turn off the product before disconnecting the power, then remove battery from product.
- 3.Don't let USB cord connect with product.

To meet the electric and electronic products hazardous substances restricted use management method "requirement, the following are electrical appliances products offered by part name and information that may contain harmful substances.

Spare part name	Hazardous substance					
	Pb	Hg	Cd	CrVI	Ipbb	PBDE
Plastic case	○	○	○	○	○	○
Charging cord	○	○	○	○	○	○
Battery	×	○	○	○	○	×
Inside electric parts	×	○	○	○	○	○

This form is based on the provisions of SJ/T 11364
○ : It means the hazardous substances are less than limited requirements of GB/T 26572.
× : It means the hazardous substances in one of the materials are more than limited requirements of GB/T 26572.

Remarks:The callus remover can be cleaned under running water

After sale service

Please do not hesitate to contact us if we can be of any further assistance.