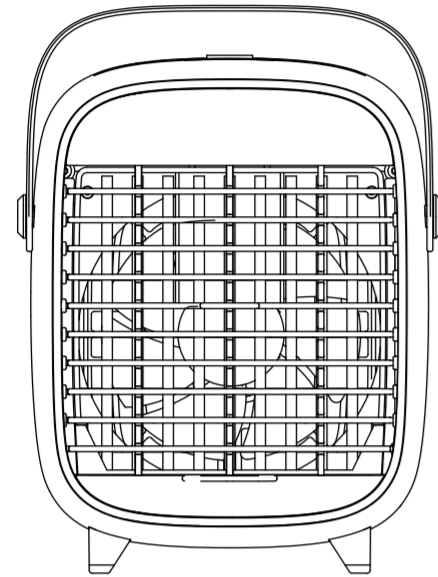


# 523x148mm

## 桌面冰冷风扇说明书 DESK COOLER FAN SPECIFICATION



使用本产品前，请认真阅读本使用手册！

**产品参数**  
产品型号: Y3  
产品净重: 815G  
材 料: ABS/PP/PC电子元件  
输入电压: DC5V /TYPE-C输入口  
电池电压: 3.7V  
输入电流: 1A  
工作功率: 最大9W  
电池容量: 2000MAH  
水箱容量: 240ML  
喷 雾 量: 30-35ML/H  
产品尺寸: 150\*145\*180MM  
执行标准: GB4706.1-2005 GB4706.27-2008  
检 验: 合格品  
产 地: 中国深圳

**功能操作**  
该风扇分为三档调节。  
A.首次单击按键为一档。  
B.再次单击按键，切换为风扇中档。  
C.三次单击按键，切换为风扇高档。  
D.四次单击按键，关闭风扇。

**喷雾功能**  
单击喷雾按键，开启喷雾模式。再次单击按键，关闭喷雾模式。  
① 风扇不开启的情况下，无法开启喷雾。  
② 关闭风扇，喷雾也将关闭。

**功能指示灯**  
指示灯显示档位，一档亮一颗灯，二档亮二颗灯，三档亮三颗灯；第四颗白色指示灯是喷雾工作指示灯，当喷雾启动时第四颗纯白色指示灯亮起。

**充电指示灯功能**  
充电时指示灯红灯常亮，充满电时指示灯蓝光常亮。  
充满电使用时间：  
本机充满电大约需3小时左右；低档可使用4小时左右，中档可使用3小时左右，高档可使用2小时左右。

**喷雾定时功能**  
持续3小时后自动停止喷雾。

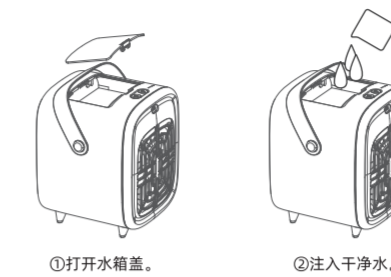
**产品保养**  
购买产品后请充电2小时以上再使用。  
每存放三个月充电一次，避免电池损坏。  
请勿让0-10岁小孩单独使用本产品。

**产品配置**  
主机一台，数据线一条，说明书一份。

### 产品部件名称

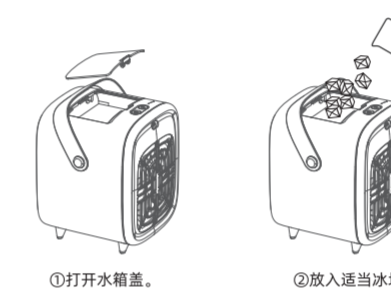


### 加水操作



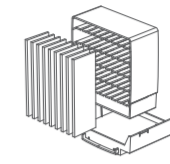
**注意:** 1、注水加满水箱为止，请勿多加水。  
2、加水时，请把产品平放，请勿倾斜，以免加水溢出。  
3、加水后禁止倒立或者倾斜产品。

### 加冰操作



### 更换棉片

产品长时间不使用，使用时需要更换棉片。



从水箱取出棉片盒即可更换棉片。

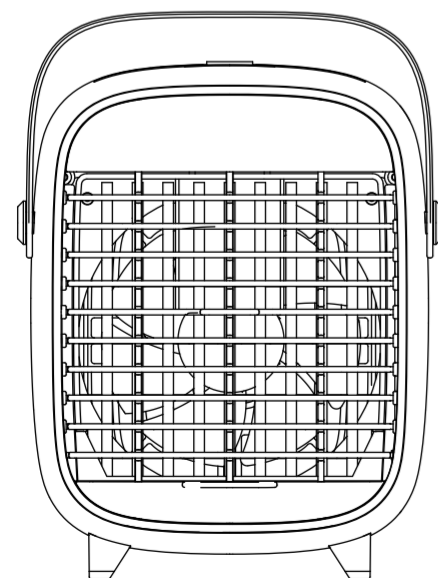
**注意事项**

1、禁止产品放于斜面，或倒立，侧立工作，以防水溢出。



2、产品工作中，请勿拿起产品，以防水溢出。  
3、本产品禁止12岁以下儿童单独使用。  
4、产品长时间不使用，请放置于干净阴凉地方。

## DESK COOLER FAN SPECIFICATION



Please read this manual carefully before using this product

**Item parameters**  
Product No.: Y3  
Product weight: 815G  
Material: ABS/PP/PC electronic component  
Input voltage: DC5V /TYPE-C input port  
Battery voltage: 3.7V  
Input Current: 1A  
Working power: 9W Max  
Battery capacity: 2000MAH  
Water tank: 240ML  
Spray volume: 30-35ML/H  
Item dimension: 150\*145\*180MM  
Standard: GB4706.1-2005 GB4706.27-2008  
Inspection: Qualified products  
Original place: Shenzhen,China

**Functional operation**  
The fan has three levels.  
A.First click of the button is 1 level.  
B.Click the button again to switch to 2 level.  
C.Click the button three times to switch to 3 level.  
D.Click the button four times to turn off the fan.

**Spray function**  
Click the spray button to turn on spray mode. Click the button again to turn off spray mode.  
①Spray can't be turned on if the fan isn't running.  
②Turn off the fan and the spray also turn off.

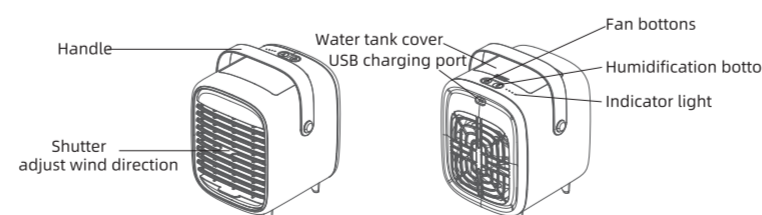
**Function indicator**  
The indicator light shows the levels, one light in the first level, two lights in the second level, and three lights in the third level; the fourth white indicator light is the spray work indicator light.

**Charging indicator function**  
The light is steady red when charging, and the light is steady blue when fully charged.  
Fully charged time:  
It takes about 3 hours to fully charge the machine; about 4 hours can be used for 1 level,3 hours for 2 level,2 hours for 3 level.  
Spray timer function:  
Automatically stop spraying after 3 hours.

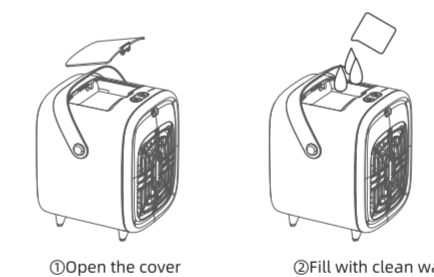
**Product maintenance**  
Please charge it for more than 2 hours before use first purchasing.  
Charge once every three months to avoid battery damage.  
Don't let children aged 0-10 use this product alone.

**Package**  
1 x Fan, 1 x USB cable, 1 x manual.

### Product parts

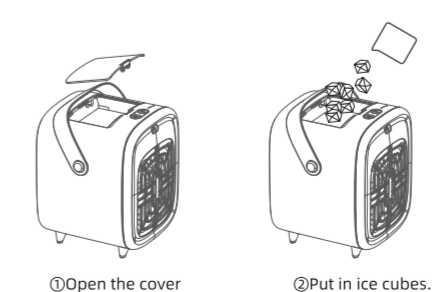


### Add water



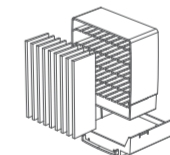
**Note:** 1.Don't add more water after the water tank is full  
2.When adding water, please lay the product flat,don't tilt it to avoid overflow of water.  
3.Do not stand or tilt the product after adding water

### Add ice



### Replace cotton

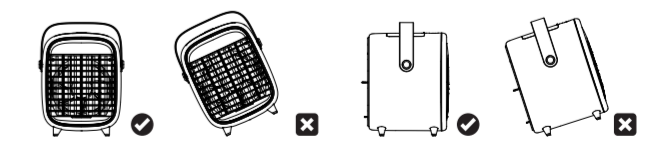
It is necessary to replace the cotton if the product not used for a long time.



Take out the cotton sheet box from the water tank and replace the cotton.

**Notes**

1. Do not put the product on the inclined surface,or stand on the side or upside down to prevent overflow



2. Please don't pick up the product to prevent overflow during working.  
3. Not allowed the children under 12 years old to use this product alone.  
4. If the product isn't used for a long time, please keep it in a clean and cool place.