

LATEST AND GREATEST

Our team is constantly improving your product experience. This model may have new features or controls which are not detailed in this guide.

For the latest version of the manual, scan the QR code below.



© 2022-JKM041

R-R-JLA-MINI

FCC ID: 2AHYV-JBMINI
IC: 21316-JBMINI

WITH LOVE FROM THE LAB

We have lots of different ways to show we care.

GET STARTED + FREE GIFT

Product updates | How-to tips | FAQs & more

Go to jlab.com/register to unlock your customer benefits including a free gift.

Gift for US only. No APO/FPO/DPO addresses.

WE GOT YOUR BACK

We're obsessed with creating the best possible experience around owning our products. If you have any questions, concerns, or feedback, we're here for you. Contact a real human on our U.S.-based customer support team:

Website: jlab.com/contact Email: support@jlab.com

Phone U.S.: +1 (405) 445-7219

Phone U.K./EU: +44 (20) 8142 9361

(Check hours jlab.com/hours)

Visit jlab.com/warranty to initiate a return or exchange.

THE RIGHT SOUND FOR EVERY MOMENT

EQUALIZER MODES

"JLAB SIGNATURE"
JLab C3™ signature sound with amplified vocals and bass

BEST FOR
Best option for most music
Pop, rock, country, electronic and more

"BALANCED"
Even sound with no additional sound enhancements

BEST FOR
Podcasts, Audiobooks
Classical music

"BASS BOOST"
Amplified bass and sub-bass

BEST FOR
Working out, sport and fitness
Hip hop, rap, electronic

"CUSTOM"
Personalize your EQ through the JLab App.

OUTSIDE

FIND YOUR FIT



Try all ear tips for best fit and proper seal.

DOWNLOAD THE APP

Customize JBuds Mini features and update the latest software.

Download the **JLab App** in Apple/Google Play Store.



QUICK TIPS

- The left or right earbud can be used independently for music and phone calls. Simply choose one and take out of the case to connect.
- Fully dry off earbuds before putting in the charging case to avoid any damage to the case. The earbuds are sweat/water resistant but the case is not.
- Choosing the correct ear tip makes a significant improvement in audio quality due to proper seal for the driver. Try all ear tips for best results.

TROUBLESHOOTING CONNECTION FAILURE OR EARBUDS DISCONNECTED FROM EACH OTHER (MANUAL RESET)

- 1 Keep the earbuds in the charging case and forget "JLab JBuds Mini" from your Bluetooth device settings.
- 2 Quick tap 7x on one earbud in charging case. Earbud blinks blue 4 times.
- 3 Quick tap 7x on other earbud in charging case. Earbud blinks blue 4 times.
- 4 Take both earbuds out of the charging case. One earbud will be solid white and other will blink blue/white indicating ready to pair to your device.

Instructional videos at: JLAB.COM/MANUALS



QUICK START GUIDE



WELCOME TO THE LAB

The Lab is where you'll find real people, developing really great products, in a real place called San Diego.

PERSONAL TECH DONE BETTER



Designed for You
We actually listen to what you want and we're always looking for ways to make everything easier and better for you.



Lab Quality Sound
Choose from different settings and customize your sound style to match exactly what you're doing.

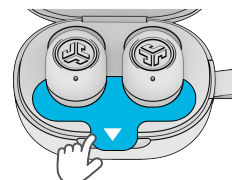


Surprisingly Awesome Value
We always pack in the most functionality and fun into every product at a truly accessible price.

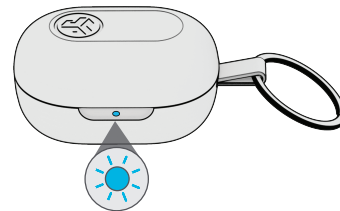
#yourkindoftech

PAIR UP

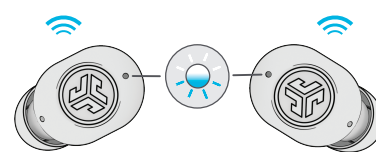
- 1 Remove pull tab. Close case door with earbuds.



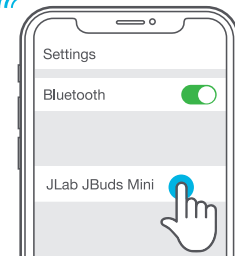
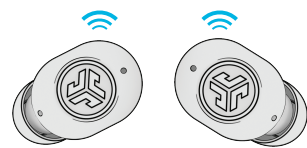
- 2 Light on case indicates charge. Remove earbuds from case.



- 3 One earbud blinks blue/white = Ready to Pair



- 4 Select "JLab JBuds Mini" in your Bluetooth settings to connect.



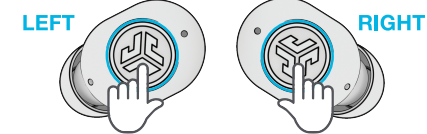
Voice prompt "Bluetooth connected" followed by lights off will indicate connection.

Customize JBuds Mini features with the JLab App



INSIDE

GO AHEAD, PRESS THE BUTTON



VOLUME DOWN: 1x
VOICE ASSISTANT: 2x
MUSIC/MOVIE MODE: Press Hold
EQ CHANGE: 3x

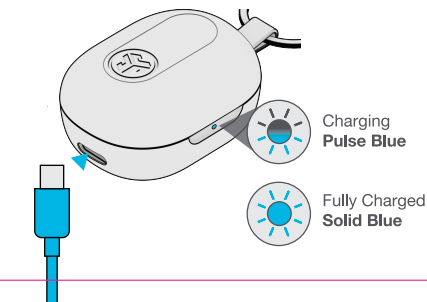
VOLUME UP: 1x
PLAY/PAUSE: 2x
TRACK FORWARD: Press Hold
BE AWARE: 3x

ANSWER CALL: 1x
HANG UP CALL: 2x

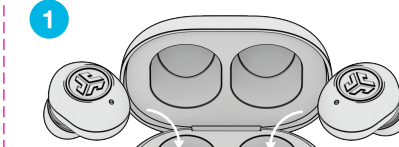
REJECT INCOMING CALL: Press Hold

GET CHARGED (CASE)

Connect the JBuds Mini to computer or USB 5V 1A (or less) output device.



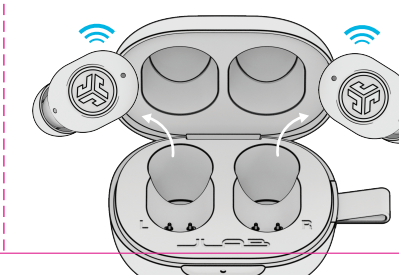
GET CHARGED (EARBUDS)



Solid Blue
Case 100-30%

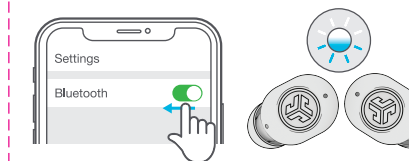
Blinks 4x Red
Case less than 30% (charge case)

- 2 Earbuds will auto power on and connect when removed.



MULTIPOINT

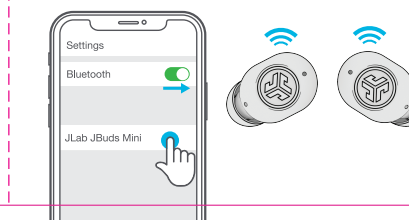
- 1 Once **FIRST** device is connected, turn off Bluetooth in device settings. JBuds Mini will auto enter Bluetooth Pairing.



- 2 Enter your **SECOND** device Bluetooth settings and connect to JBuds Mini.



- 3 Enter your **FIRST** device Bluetooth settings. Turn on Bluetooth and connect to JBuds Mini.



Date: 07.20.23

PROJECT: JBuds Mini QSG

STOCK: 157g, MATTE

INK: 4/4 CMYK/CMYK

FLAT SIZE: 353.3mm x 110mm

FOLDED SIZE: 58.815mm x 110mm