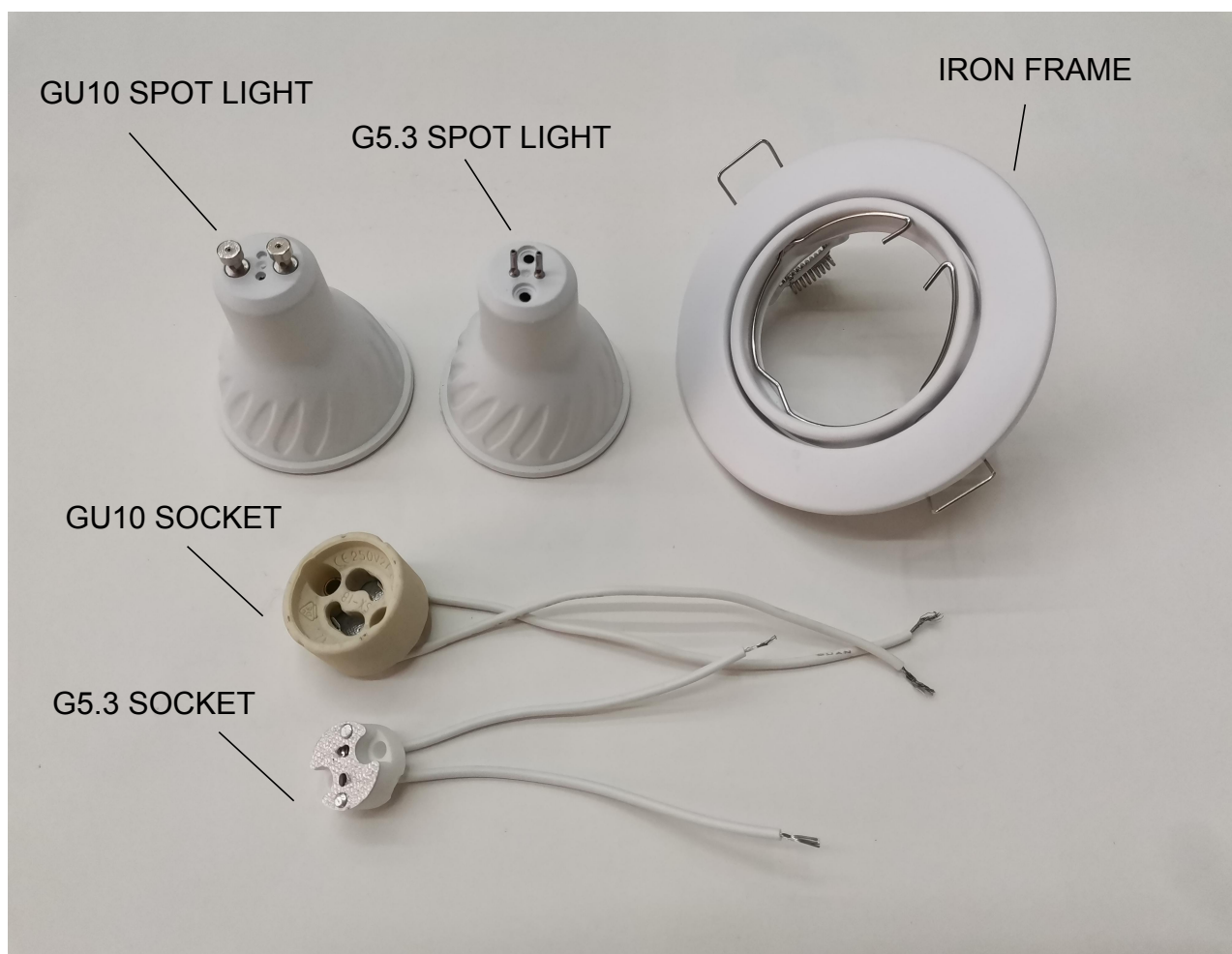
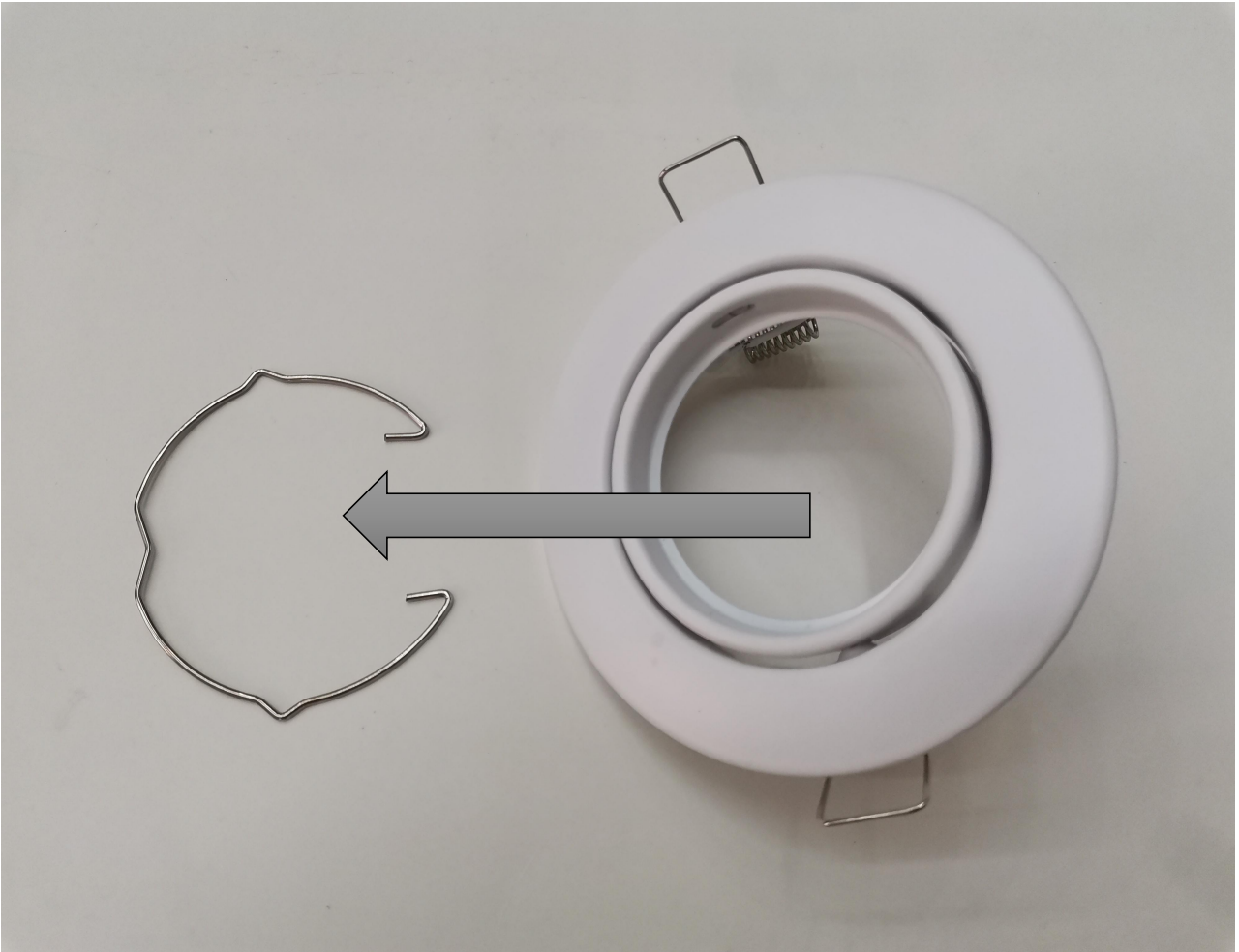


How To Use GU10/G5.3 Spot Light & Recessed Frame

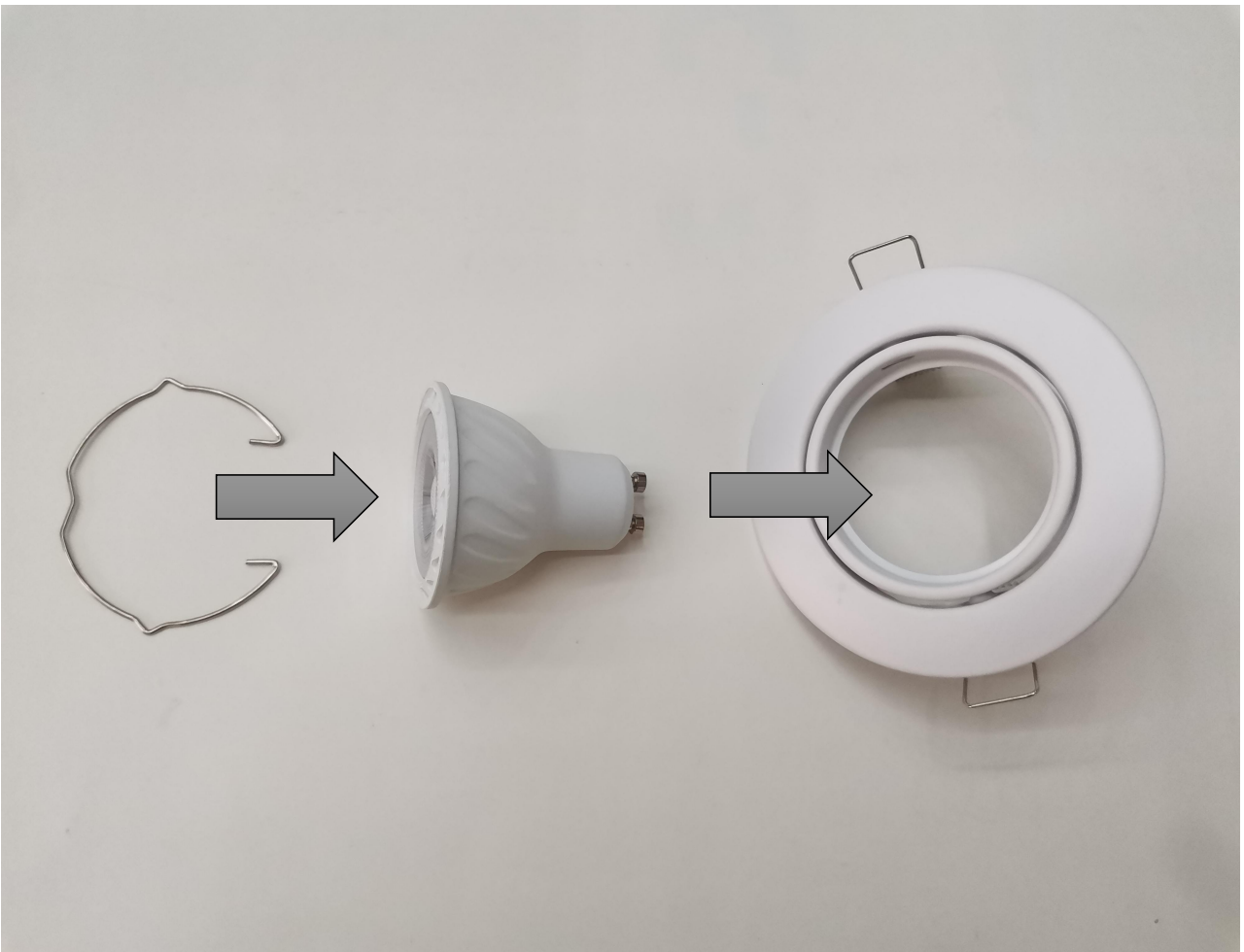
1. Product Name



2. Take the ring out of the iron frame.



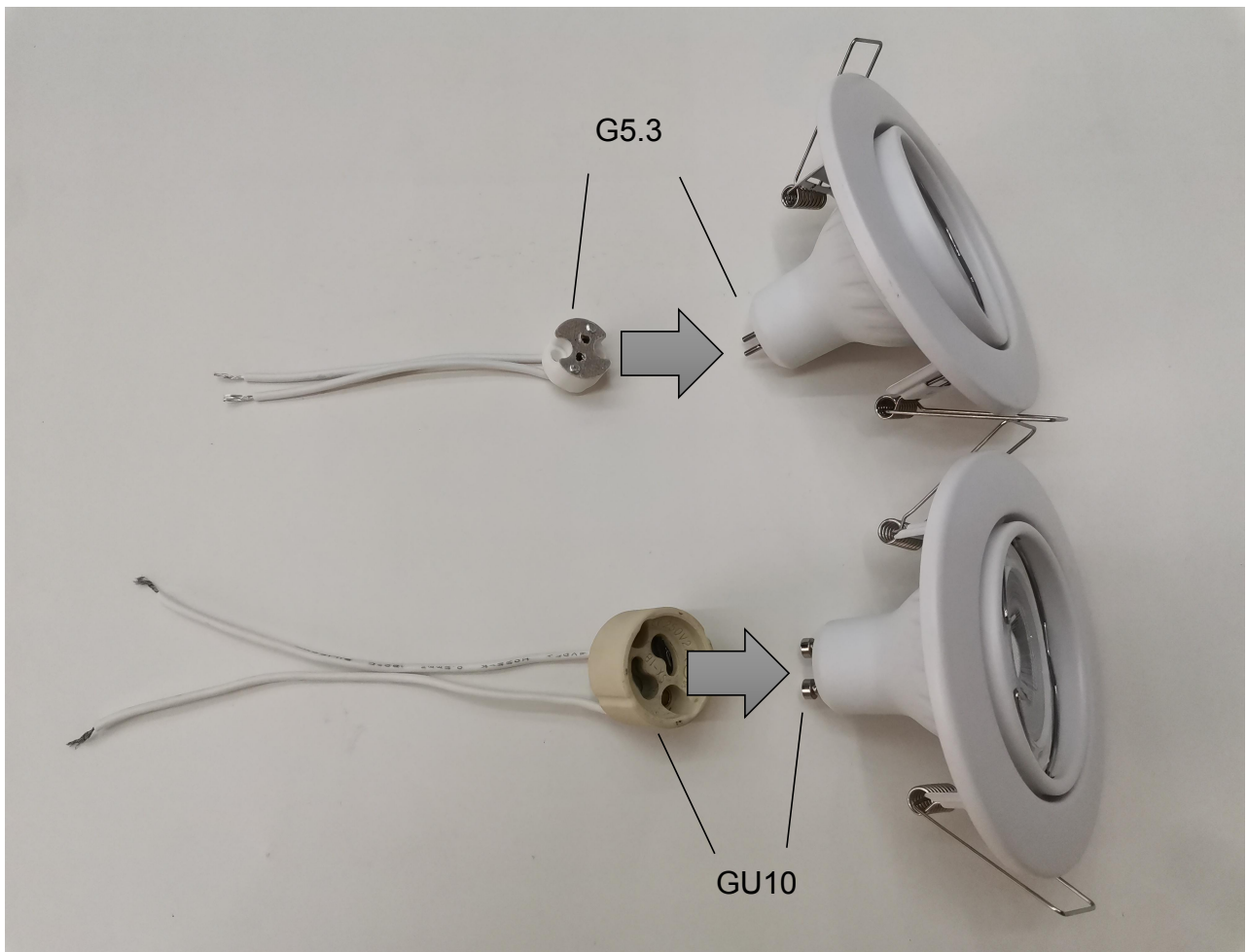
3. Put the spot light into the iron frame and put the ring back.



4. Make sure the spot light is in the iron frame and do not fall apart easily.



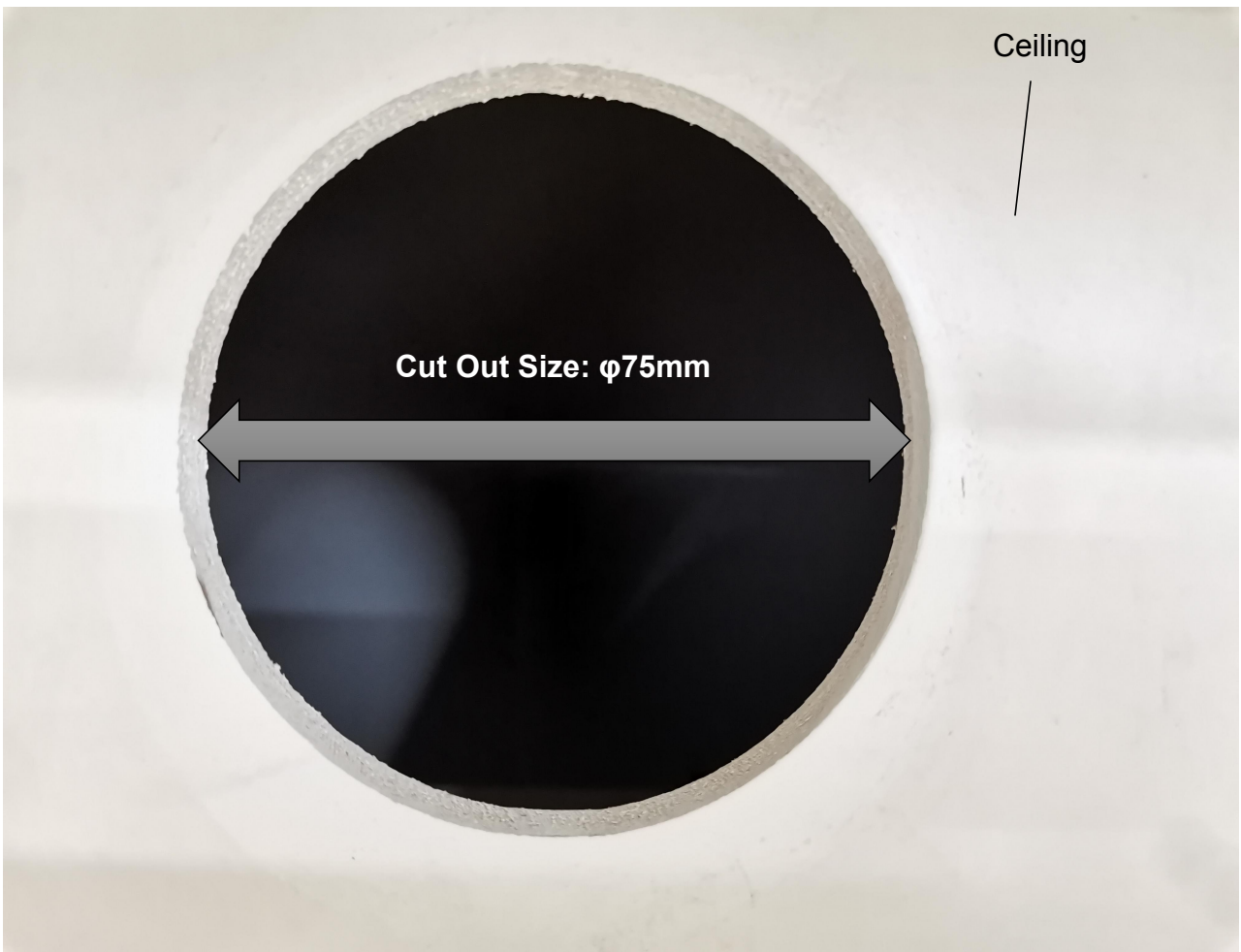
5. Connect the socket to the tail of the spot light.



6. Make sure that the socket is connected to the spot light and not easily separated.



7. Cut holes in the ceiling where spotlights need to be installed.



8. Connect the wires when the power is turned off.



9. Rotate the spring on both sides of the iron frame in reverse.



10. Put both springs into the hole in the ceiling and release.



11. Adjust the inner ring to the desired Angle and energize.

