

FRIDAEI

MODEL C



YOUR
BURNWISE
ADVENTURE
STARTS
HERE !!!

burnwise
WOODGAS STOVE

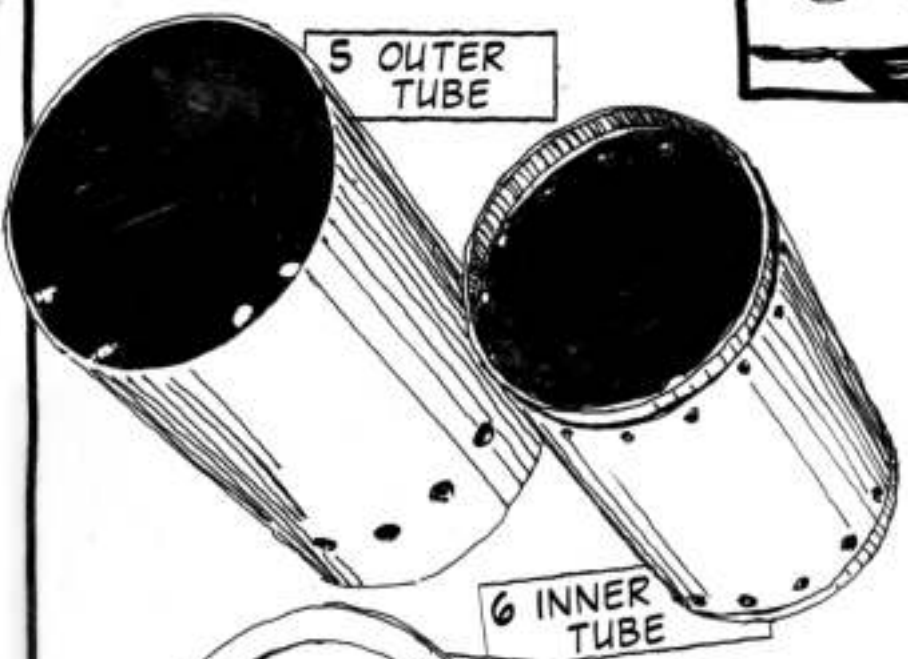
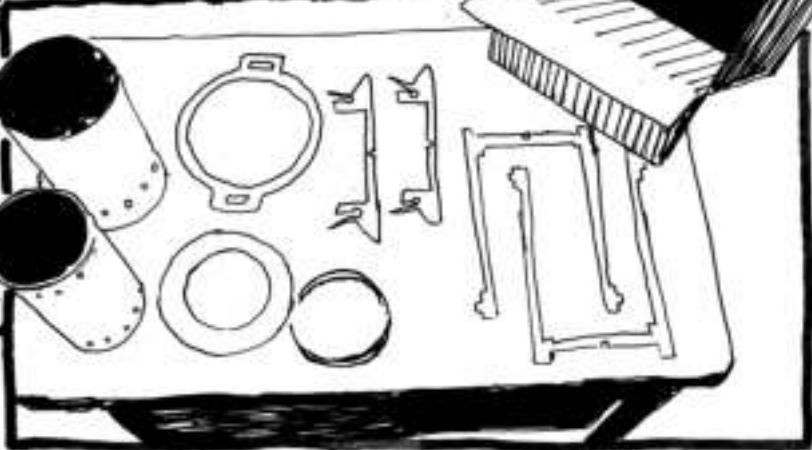
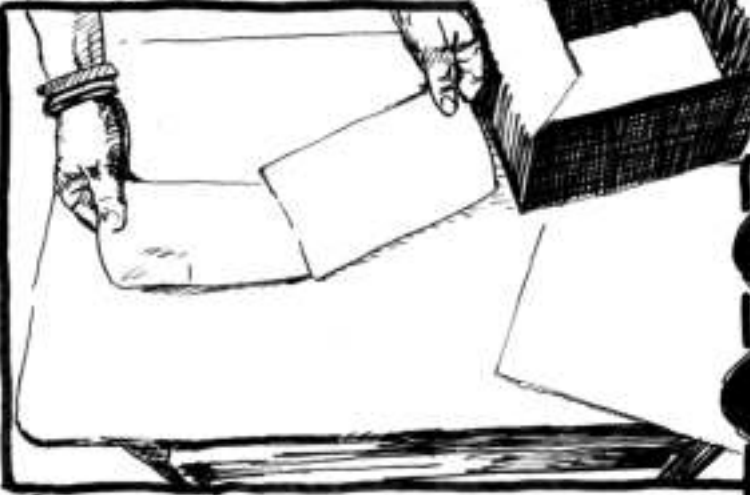
©2017FRIDAEI WOODGASSTOVE
GRAPHICS BY ERIK VERMEULEN

FRIDAEL WOODGASTOVE

CONTENT

UNPACK THE BOX!!!

LETS SEE IF EVERYTHING IS INSIDE



5 OUTER TUBE

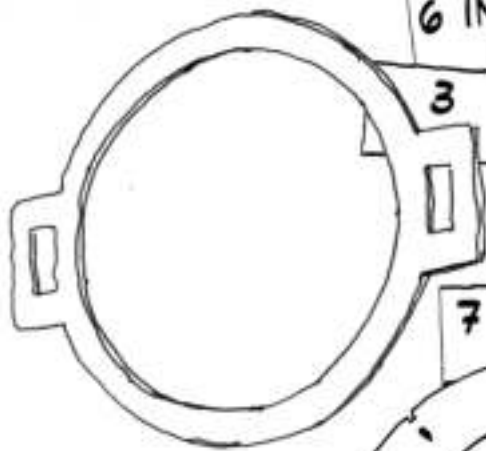
6 INNER TUBE



8 PAN HOLDER A

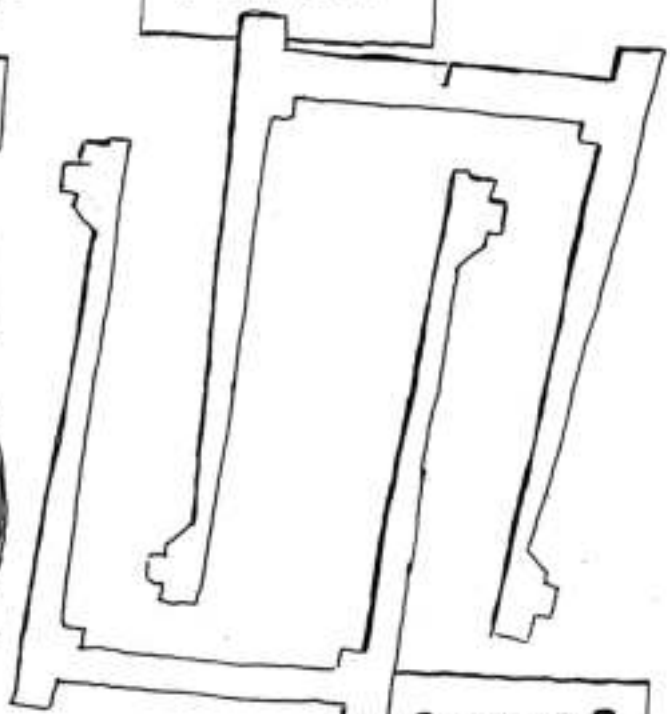


9 PAN HOLDER B



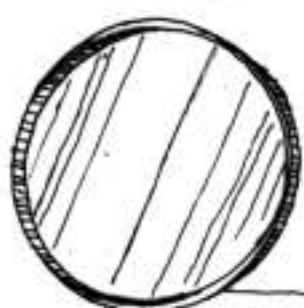
3 RING WITH HANDELS

1 STAND A



2 STAND B

7 CLOSING RING



4 ASHTRAY



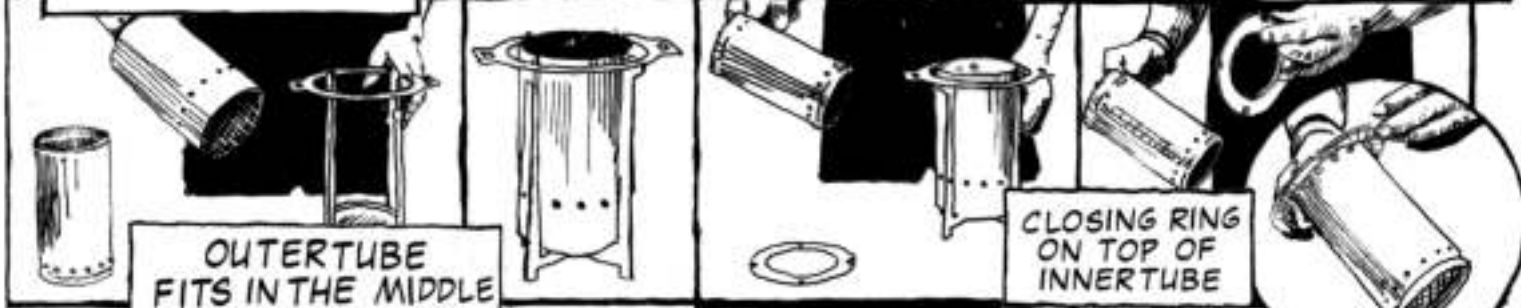
GRAB STANDS A AND B

GET RING WITH HANDLES



PUT ON TOP

AND PLACE ASHTRAY ON BOTTOM



OUTERTUBE FITS IN THE MIDDLE

CLOSING RING ON TOP OF INNERTUBE



PUT INNERTUBE IN OUTER TUBE

TOP WILL LOOK LIKE THIS

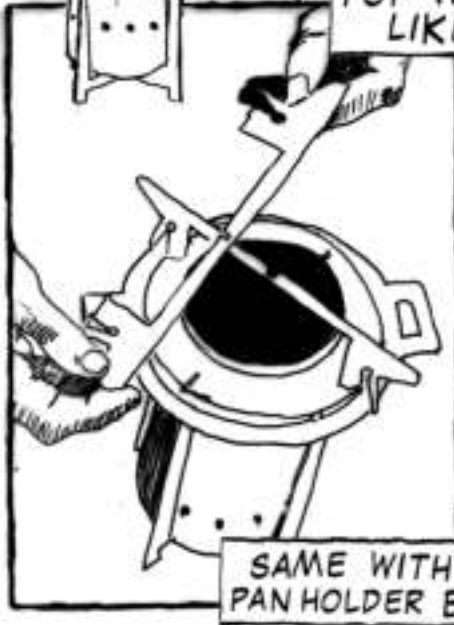


PLACE PAN HOLDER A ON CLOSING RING

TAKE PAN HOLDERS

CLICK!!!

CLICK!!!



SAME WITH PAN HOLDER B



DONE!!

FOR THE BEST WAY TO LIGHT UP YOUR FRIDAEL WOODGASTOVE FLIP THE PAGE!!!

TO BURNWISE
YOU NEED...

A FIRE
STARTER

SOME
SORT OF
LIGHTER

AND
DRY WOOD

FILL THE
STOVE
WITH WOOD

LARGE TINDER FIRST

SMALL TINDER
ON TOP

LIGHT THE
FIRE STARTER

AND PUT IT
ON TOP OF
THE WOOD

YOU ARE READY
TO BURNWISE