

IMPORTANT SAFETY INSTRUCTIONS

When using a battery-operated appliance, basic safety precautions should always be followed, including the following:

Read all instructions before using this appliance.

WARNING

To reduce the risk of burns, fire or injury to persons:

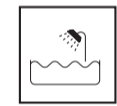
1. Close supervision is necessary when this appliance is used by, on, or near children or invalids.
2. Use this appliance for its intended household use as described in this manual. Do not use attachments not recommended by Philips Electronics North America Corporation.
3. Never operate this appliance if it is not working properly, or if it has been dropped or damaged. For assistance call 1-800-243-7884.
4. Do not use outdoors or operate where aerosol (spray) products are being used or where oxygen is being administered.
5. Never put the appliance in direct sunlight or use, store at a temperature between 40°F and 100°F.
6. Always check, shaving foil and trimmers before using. Do not use the appliance if the shaving foil or trimmers are damaged, as injury may occur.
7. If appliance will not be used on a regular basis, remove the batteries to prevent possible damage due to chemical leakage. If batteries do leak, remove carefully. Do not allow bare skin to touch leaking fluid.

SAVE THESE INSTRUCTIONS

IMPORTANT INFORMATION

CAUTION

- ▶ If the appliance is subjected to a major change in temperature, pressure or humidity, let them acclimatize for 30 minutes before using.
- ▶ For hygienic reasons, it is recommended that the shaver be used by only one person.
- ▶ This appliance is only intended for shaving body hair below the neck.
- ▶ The symbol below indicates that the shaver can be used in the bath or shower.



- ▶ Make sure your hands and shaver are dry when inserting the batteries.
- ▶ Never use scouring pads, abrasive cleaning agents or aggressive liquids such as gasoline or acetone to clean the appliance.
- ▶ Be careful with hot water. When rinsing the shaver, always check to make sure the water is not too hot (maximum 100°F) to prevent your hands from getting burnt.
- ▶ Turn shaver off before cleaning.
- ▶ Do not clean, rinse or immerse the shaver in water if the battery compartment is not closed properly.

GENERAL

- ▶ Use this appliance for its intended household use as described in this manual.
- ▶ For dry shaving, be certain your skin is clean and dry before shaving.
- ▶ For wet shaving, prepare your skin with lathered soap or shaving foam before shaving.
- ▶ Do not use deodorant or alcohol-based lotions immediately before or after shaving. You may however, want to use talcum powder.
- ▶ It is not necessary to press hard to get a close result. Pressing too hard may cause skin irritation, and affect the shaving performance.
- ▶ Clean the shaver after each use.
- ▶ This appliance has no other user-serviceable parts. For assistance call 1-800-243-7884.
- ▶ Make sure the shaving foil and trimmers are always in full contact with the skin to obtain an even result.
- ▶ For optimum shaving, stretch skin taut with one hand while using.

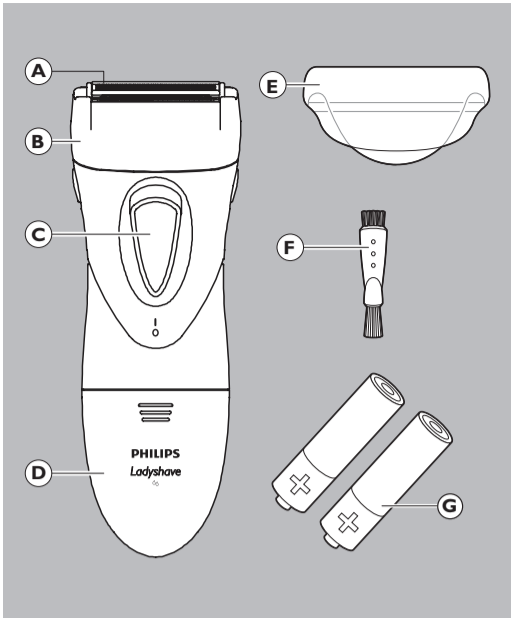
Introduction

Congratulations on your purchase and welcome to Philips!

To fully benefit from the support that Philips offers, register your product at www.philips.com/welcome



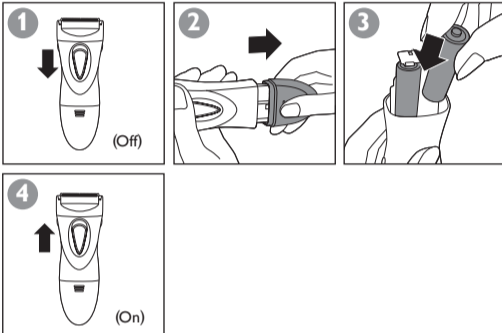
Features



- A Shaving Unit
- B Shaving Head
- C On/Off Button
- D Battery Compartment Cover
- E Protective Cap
- F Cleaning Brush
- G 2 "AA" 1.5 Volt Alkaline Battery



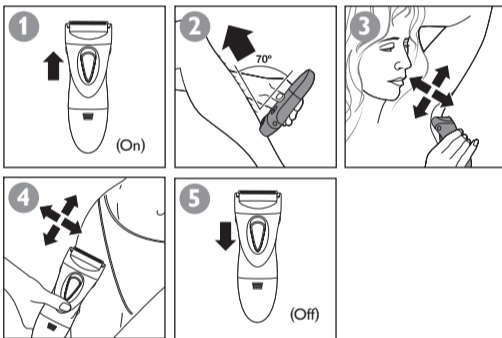
Inserting Batteries



NOTE: Make sure the (+) and (-) markings on the ends of the batteries match those inside the battery compartment.



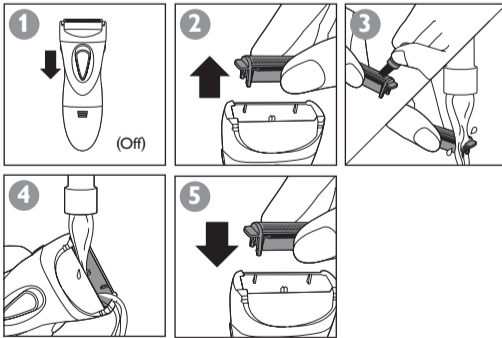
Shaving



TIP: To shave legs and bikini line, always move shaver gently over the skin against the direction of hair growth. To shave underarms, place one arm behind your head and move the shaver up and down and from left to right.



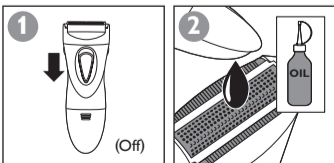
Cleaning



NOTE: Allow to air dry thoroughly.



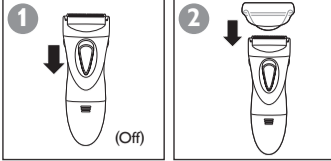
Maintenance



TIP: Also apply vaseline to the rubber sealing ring from time to time to keep the shaver watertight.



Storage



Disposal

Dispose of battery properly. Do not incinerate. Battery may explode if overheated. Do not wrap in metal or aluminum foil. Wrap in newspaper before discarding. It is suggested that you contact your local town or city to determine proper battery drop-off locations.



Troubleshooting

This chapter summarizes the most common problems you could encounter with the appliance. If you are unable to solve the problem with the information below, visit www.philips.com/support or call 1-800-243-7884 for assistance.

Problem	Possible cause	Solution
The appliance is not performing as well as it should.	The shaving unit is dirty.	Remove the shaving unit and clean it under the tap or with the cleaning brush. Remove any hairs that might be stuck under the trimmer.
The appliance operates too slowly (and produces an odd sound).	You put the appliance on the skin at a wrong angle.	Make sure that you put the appliance on the skin at an angle of 70° (see 'Shaving' section).
	The batteries are nearly empty.	Replace the batteries.
	The shaving unit is dirty.	Clean the shaving unit.
	The shaving unit needs to be lubricated.	Lubricate the shaving unit with a few drops of sewing machine oil.
Skin is irritated.	The shaving foil is damaged or worn.	Replace the shaving unit.
The appliance does not work.	The batteries are empty.	Replace the batteries.
	You have not placed the batteries in the battery compartment correctly.	Put the batteries in the compartment in accordance with the + and - indications in the compartment.
	You have not attached the battery compartment cover properly.	Push the battery compartment cover onto the appliance ('click').
The appliance fell into the water while the battery compartment was open		Let the appliance dry thoroughly. Do not reattach the battery compartment cover until the inside of the appliance is completely dry.



Assistance

For assistance visit our website www.philips.com/support or call toll free: 1-800-243-7884.



PHILIPS

Ladyshave



HP6306

Battery-Operated

Always here to help you

Register your product and get support at www.philips.com/welcome



4203 018 4370 1

45-Day Money-Back Guarantee

If you are not fully satisfied with your Philips appliance send the product back and we'll refund you the full purchase price.

The Ladyshave must be shipped prepaid by insured mail, insurance prepaid, have the original sales receipt, indicating purchase price and date of purchase, and the money-back guarantee return authorization form enclosed. We cannot be responsible for lost mail. The Ladyshave must be postmarked no later than 45 days after the date of purchase. Philips reserves the right to verify the purchase price of the product and limit refunds not to exceed suggested retail price.

To obtain money-back guarantee return authorization form, call 1-800-243-7884 for assistance.

Delivery of refund check will occur 6-8 weeks AFTER receipt of returned product.



Full Two-Year Warranty

Philips Electronics North America Corporation warrants each new Philips product, Models HP6306 (except foil and cutters) against defects in materials or workmanship for a period of two years from the date of purchase, and agrees to repair or replace any defective product without charge.

IMPORTANT: This warranty does not cover damage resulting from accident, misuse or abuse, lack of reasonable care, the affixing of any attachment not provided with the product or loss of parts or subjecting the product to any but the specified battery.* Use of unauthorized replacement parts will void this warranty. **PHILIPS ELECTRONICS NORTH AMERICA CORPORATION WILL NOT PAY FOR WARRANTY SERVICE PERFORMED BY A NON-AUTHORIZED REPAIR SERVICE AND WILL NOT REIMBURSE THE CONSUMER FOR DAMAGE RESULTING FROM WARRANTY SERVICE PERFORMED BY A NON-AUTHORIZED REPAIR SERVICE. NO RESPONSIBILITY IS ASSUMED FOR ANY SPECIAL, INCIDENTAL OR CONSEQUENTIAL DAMAGES.**

In order to obtain warranty service, simply go to www.philips.com or call 1-800-243-7884 for assistance. It is suggested that for your protection you return shipments of product by insured mail, insurance prepaid. Damage occurring during shipment is not covered by this warranty. **NOTE:** No other warranty, written or oral, is authorized by Philips Electronics North America Corporation. This warranty gives you specific legal rights, and you may also have other rights which vary from state to state. Some states do not allow the exclusion or limitation of incidental or consequential damages, so the above exclusion and limitations may not apply to you. *Read enclosed instructions carefully.

Manufactured for:
Philips Consumer Lifestyle
A Division of Philips Electronics North America Corporation
P.O. Box 10313, Stamford, CT 06904

PHILIPS is a Registered Trademark of Koninklijke Philips N.V.

© 2013 Philips Electronics North America Corporation. All Rights Reserved.