

# QUICK START GUIDE

## GUIDE DE DÉMARRAGE RAPIDE



### STEALTH™

# 700

GEN 2

### IMPORTANT

#### READ BEFORE USING

#### À LIRE

#### LIRE AVANT UTILISATION

Any questions? Des questions ?  
[turtlebeach.com/support](http://turtlebeach.com/support)

Model: Stealth™ 700 Gen 2 for Xbox

### IMPORTANT

**PLEASE MAKE SURE YOUR HEADSET IS UPDATED WITH THE LATEST FIRMWARE.**

### IMPORTANT

**VEUILLEZ VOUS ASSURER QUE VOTRE CASQUE DISPOSE DE LA DERNIÈRE VERSION DU MICROLOGICIEL.**

Connect to the Turtle Beach Audio Hub for Windows or Mac® to update firmware. Customize your settings with the Turtle Beach Audio Hub mobile app for Android and iOS.

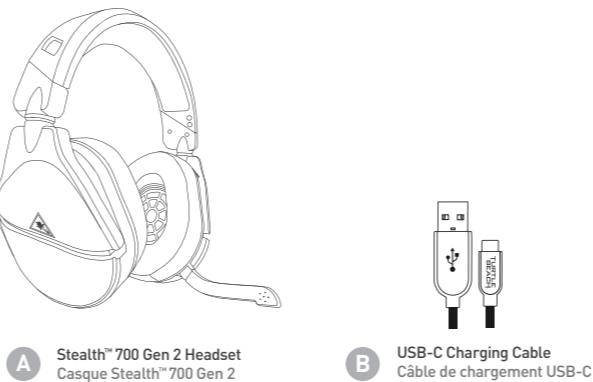
Connectez-vous au Turtle Beach Audio Hub pour Windows ou Mac® afin de mettre à jour le micrologiciel. Personnalisez vos options avec l'application mobile Turtle Beach Audio Hub pour Android et iOS.

[turtlebeach.com/audiohub](http://turtlebeach.com/audiohub)



### CONTENTS

#### CONTENU DE LA BOÎTE

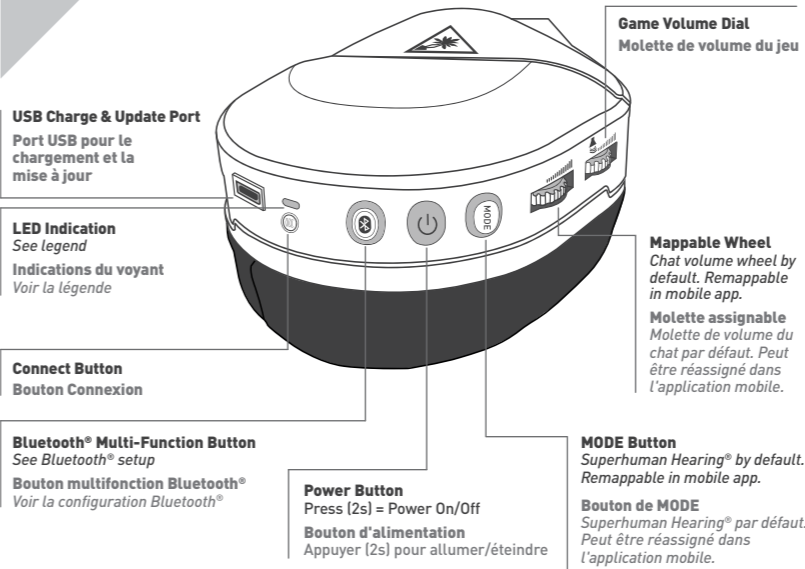


**A** Stealth™ 700 Gen 2 Headset  
Casque Stealth™ 700 Gen 2

**B** USB-C Charging Cable  
Câble de chargement USB-C

### HEADSET CONTROLS

#### COMMANDES SUR CASQUE



**USB Charge & Update Port**  
Port USB pour le chargement et la mise à jour

**LED Indication**  
See legend  
Indications du voyant  
Voir la légende

**Connect Button**  
Bouton Connexion

**Bluetooth® Multi-Function Button**  
See Bluetooth® setup  
Bouton multifonction Bluetooth®  
Voir la configuration Bluetooth®

**Power Button**  
Press (2s) = Power On/Off  
Bouton d'alimentation  
Appuyer (2s) pour allumer/éteindre

**Mappable Wheel**  
Chat volume wheel by default. Remappable in mobile app.  
Molette assignable  
Molette de volume du chat par défaut. Peut être réassigné dans l'application mobile.

**MODE Button**  
Superhuman Hearing™ by default. Remappable in mobile app.  
Bouton de MODE  
Superhuman Hearing™ par défaut. Peut être réassigné dans l'application mobile.



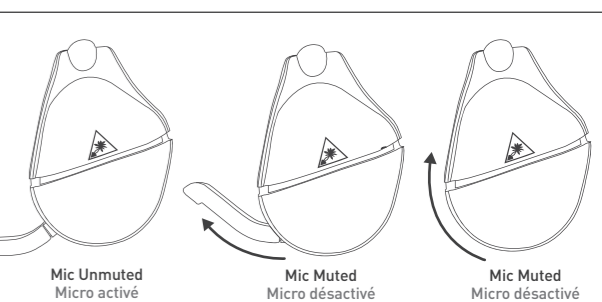
**SUPERHUMAN HEARING™**

Use Superhuman Hearing™ Mode to pinpoint quiet audio cues like enemy footsteps and weapon reloads. During gameplay, you can activate and deactivate Superhuman Hearing™ by pressing the **MODE button** once, quickly.

Le mode Superhuman Hearing™ permet d'entendre le moindre son, comme les pas d'un adversaire ou le rechargement d'une arme. Pendant le jeu, vous pouvez activer ou désactiver Superhuman Hearing™ en appuyant une fois sur le bouton **MODE** rapidement.

**Microphone Mute**  
Flip up mic to mute. There is an audible tone when the mic is muted or unmuted.

**Microphone Muet**  
Relevé le microphone pour le désactiver. Vous entendrez un son lorsque le microphone est désactivé ou activé.



EQ PRESETS   PRÉSETS D'ÉQUALISATION
Signature Sound   Son emblématique
Bass Boost   Amplification des basses
Bass + Treble Boost   Amplification des basses et des aigus
Vocal Boost   Amplification vocale

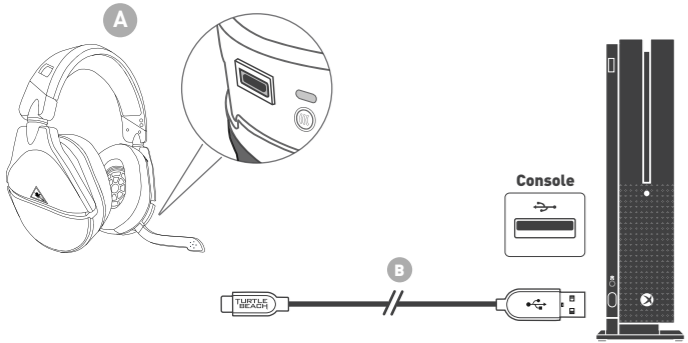
Custom EQ Presets available through the Turtle Beach Audio Hub mobile app.  
Des pré-réglages EQ personnalisés sont disponibles dans l'application mobile Turtle Beach Audio Hub.

### CHARGING

#### CHARGEMENT

The Stealth™ 700 Gen 2 gives you **20 hours** of rechargeable battery life. Make sure to charge it regularly before storing.

Le Stealth™ 700 Gen 2 vous offre **20 heures** d'autonomie de batterie rechargeable. N'oubliez pas de le recharger régulièrement avant de le ranger.

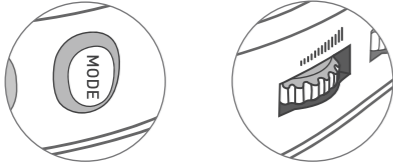


**Headset Storage**  
Always charge your headset before storing it for any extended period of time (greater than 3 months). Never store the unit in temperatures above 113°F/45°C.

**Rangement du casque:**  
Chargez toujours votre casque avant de le ranger pour une longue durée (plus de 3 mois). Ne stockez jamais le casque à des températures supérieures à 45°C.

### MAPPABLE BUTTONS

#### BOUTONS ASSIGNABLES



The **MODE** Button and **Mappable Wheel** can be assigned to a new function based on your gaming style. To change the button's assignment, follow these steps:

Le bouton de **MODE** et la molette assignable peuvent être assignés à une nouvelle fonction selon votre style de jeu. Pour changer la fonction du bouton, suivez ces étapes :

**1** Download the Turtle Beach Audio Hub mobile app on your iOS or Android device.  
Téléchargez l'application mobile Turtle Beach Audio Hub sur votre appareil iOS ou Android.

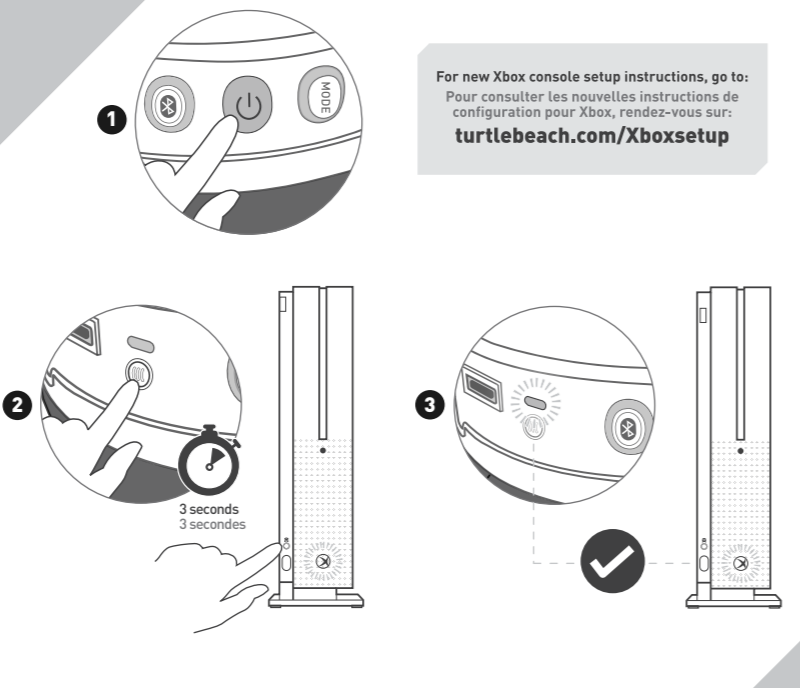
**2** Enable Bluetooth® on your selected device, and pair with your headset to access the app.  
Activez le Bluetooth® sur l'appareil sélectionné et associez-le à votre casque pour accéder à l'application.

**3** Swipe to the second settings screen to assign new functions. Faites glisser jusqu'au deuxième écran des options pour assigner de nouvelles fonctions.

**4** Once selected, your headset will save this configuration. Une fois la configuration sélectionnée, votre casque la sauvegardera.

### SETUP FOR XBOX

#### CONFIGURATION POUR XBOX



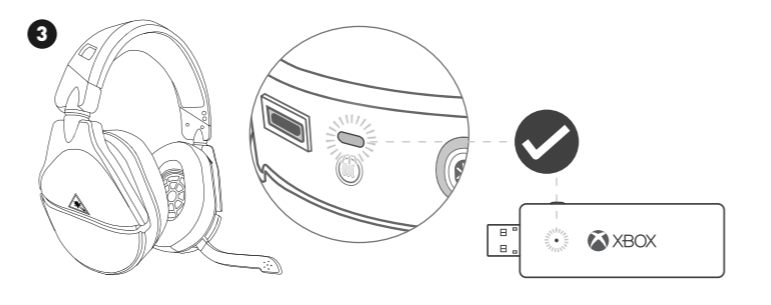
For new Xbox console setup instructions, go to [turtlebeach.com/Xboxsetup](http://turtlebeach.com/Xboxsetup)

### BLUETOOTH® SETUP | CONFIGURATION BLUETOOTH®

Your Stealth™ 700 Gen 2 will enter Bluetooth® pairing mode once powered on. If no Bluetooth® connection is made in two minutes, Bluetooth® pairing mode will stop. To put your headset into Bluetooth® pairing mode, follow these steps:

Une fois allumé, votre Stealth™ 700 Gen 2 entrera en mode Appariage Bluetooth®. Si aucune connexion Bluetooth® n'est effectuée dans les deux minutes, le mode Appariage Bluetooth® sera désactivé. Pour activer le mode Appariage Bluetooth® sur votre casque, suivez ces instructions :

- EN** 1. Hold down Bluetooth® Button until "Bluetooth® Pairing" prompt plays  
2. Connect to your headphones in your phone or tablet Bluetooth® Settings
- FR** 1. Maintenez le bouton Bluetooth® enfoncé jusqu'à obtenir confirmation du jumelage Bluetooth®  
2. Connectez-vous aux écouteurs en accédant aux paramètres Bluetooth® de votre téléphone ou de votre tablette
- ES** 1. Mantén pulsado el botón de Bluetooth® hasta que el mensaje de "emparejamiento de Bluetooth®" aparezca  
2. Conecta a los auriculares en la configuración Bluetooth® de tu teléfono o tablet
- IT** 1. Tieni premuto il pulsante Bluetooth® fino alla comparsa del messaggio "abbinamento Bluetooth®"  
2. Collega la tua cuffia con il tuo telefono o tablet dalle impostazioni Bluetooth®
- DE** 1. Halten Sie den Bluetooth®-Knopf gedrückt, bis die Meldung „Bluetooth® Pairing“ ertönt  
2. Stellen Sie über die Bluetooth®-Einstellungen Ihres Smartphones oder Tablets die Verbindung zu Ihrem Kopfhörer her.
- SE** 1. Håll in Bluetooth®-knappen tills ljudsignaler för Bluetooth®koppling visas  
2. Anslut dina hörlurar via mobilens eller surfplattans Bluetooth®inställningar
- PT** 1. Mantém premido o Botão Bluetooth® até aparecer a indicação "Emparelhamento Bluetooth®"  
2. Liga-te aos auscultadores nas Definições de Bluetooth® do teu telefone ou tablet
- NL** 1. Hou de Bluetooth®-knop ingedrukt tot de vraag om "Bluetooth®-koppeling" verschijnt  
2. Stel je headsettoestel aan op je telefoon of tablet via de Bluetooth®-instellingen
- DK** 1. Hold Bluetooth®-knappen ned indtil "Bluetooth®-parring" vises  
2. Opret forbindelse til dine hovedtelefoner fra Bluetooth®-indstillingerne i din telefon eller tablet



**Volume is controlled through Windows and the headset.**  
For more information on how to control your volume, visit the Stealth™ 700 Gen 2 Support Page at [turtlebeach.com/support](http://turtlebeach.com/support).  
Le volume est contrôlé par Windows et le casque.  
Pour en savoir plus sur le contrôle du volume, rendez vous sur la page d'assistance du Stealth™ 700 Gen 2 sur [turtlebeach.com/support](http://turtlebeach.com/support).

### SYNCING YOUR HEADSET (BUILT-IN XBOX WIRELESS)

#### SYNCHRONISER LE CASQUE (TECHNOLOGIE XBOX SANS FIL INTÉGRÉE)

- EN** 1. On your PC, go to Settings > Devices > Connected Devices.  
a. Choose Add Bluetooth® or other device. Windows searches for the headset. Select Everything else.  
b. Select the connect button on the headset. Windows finds and adds the headset.  
2. When your Stealth™ 700 Gen 2 headset appears in the list under Other devices, it is ready to use.  
3. Configuring your settings > On the Windows Taskbar, right-click the Speaker Icon, Select Playback Devices  
a. Set TURTLE BEACH Stealth™ 700 Gen 2 as your default device.  
b. Select Recording Devices, Set TURTLE BEACH Stealth™ 700 Gen 2 as your default device.

### SURROUND SOUND SETUP (AVAILABLE ONLY ON XBOX)

#### CONFIGURATION DU SON SURROUND

#### (DISPONIBLE UNIQUEMENT SUR XBOX ONE)

- EN** 1. Go to Settings > General > Volume & Audio Output  
2. Set Headset Audio to Windows Sonic for Headphones

- FR** 1. Allez dans Paramètres > Général > Volume et sortie audio.  
2. Réglez Son du casque sur Windows Sonic pour casque.

- ES** 1. Ir a Configuración > General > Salida de volumen y sonido  
2. Selecciona Windows Sonic para auriculares en Sonido de los auriculares

- IT** 1. Vai a Impostazioni > Generale > Volume e uscita audio  
2. Imposta audio cuffie su Windows Sonic per cuffie

- SE** 1. Gö till Inställningar > Allmänt > Volym och ljudutdata  
2. Ställ in Windows Sonic för Headphones under Headsetljud

- NL** 1. Ga naar Instellingen > Algemeen > Volume- en audio-uitvoer  
2. Stel Audio voor hoofdtelefoon in op Windows Sonic voor hoofdtelefoon

- DE** 1. Gehe zu Einstellungen > Allgemein > Lautstärke & Audioausgabe  
2. Aktiviere Windows Sonic für Headphones für Headset-Audio.

- PT** 1. Vai a Definições > Geral > Saída de Áudio e Volume  
2. Configura o Áudio dos Auscultadores para Windows Sonic nos Auscultadores.

- DK** 1. Gå til Indstillinger > Generelt > Lydstyrke og lydoutput  
2. Indstil headsetts lyd til Windows Sonic for Headphones

For updated setup instructions visit:  
Vous trouverez un guide d'installation mis à jour à l'adresse :  
[turtlebeach.com/sonic](http://turtlebeach.com/sonic)

### Regulatory Compliance Statements for the Stealth™ 700X Gen 2

**Legal Restrictions on 802.11a, 802.11b, 802.11g and 802.11n Radio Usage**  
**Caution:** Due to the fact that the frequencies used by 802.11a, 802.11b, 802.11g and 802.11n wireless LAN devices may not yet be harmonized in all countries, 802.11a, 802.11b, 802.11g and 802.11n products are designed for use only in specific countries, and are not allowed to be operated in countries other than those of designated use. As a user of these products, you are responsible for ensuring that the products are used only in the countries for which they were intended and for verifying that they are configured with the correct selection of frequency and channel for the country of use. Any deviation from the permissible power and frequency settings for the country of use is an infringement of national law and may be punished as such.  
To determine whether you are allowed to use your wireless network device in a specific country, please check to see if the radio type number that is printed on the identification label of your device is listed in the manufacturer's OEM Regulatory Guidance document at the following URL: <http://www.turtlebeach.com/homologation> or contact Turtle Beach directly.  
**Federal Communications Commission (FCC) Compliance Notices**  
This section includes the following FCC statements for the Stealth™ 700X Gen 2:  
• FCC ID: XGB-182790  
• RF Radiation Exposure & Hazard Warning  
• Unintended National Information Infrastructure Bands Operation Statement  
**Class B Interference Statement**  
This equipment has been tested and found to comply with the limits for a Class B digital device, pursuant to Part 15 of the FCC Rules. These limits are designed to provide reasonable protection against harmful interference in a residential installation. This equipment generates, uses, and can radiate radio frequency energy and, if not installed and used in accordance with the instructions, may cause harmful interference to radio communications. However, there is no guarantee that interference will not occur in a particular installation. If this equipment does cause harmful interference to radio or television reception, which can be determined by turning the equipment off and on, the user is encouraged to try to correct the interference by one or more of the following measures:  
• Reorient or relocate the receiving antenna.  
• Increase the distance between the equipment and receiver.  
• Connect the equipment into an outlet on a circuit different from that to which the receiver is connected.  
• Consult the dealer or an experienced radio/TV technician for help.

**FCC Caution:**  
This device complies with Part 15 of the FCC Rules. Operation is subject to the following two conditions: (1) This device may not cause harmful interference, and (2) this device must accept any interference received, including interference that may cause undesired operation.  
**RF Radiation Exposure & Hazard Statement**  
To ensure compliance with FCC RF exposure requirements, this device must be installed in a location such that the antenna of the device will be greater than 2 cm (0.8 in.) from all persons. Using higher gain antennas and types of antennas not covered under the FCC certification of this product is not allowed. Installers of the radio and end users of the product must adhere to the installation instructions provided in this manual. This transmitter must not be co-located or operated in conjunction with any other antenna or transmitter.  
**Non-Modification Statement**  
Use only the supplied internal antenna. Unauthorized antennas, modifications, or attachments could damage the Stealth™ 700X Gen 2 and violate FCC regulations. Any changes or modifications not expressly approved by the party responsible for compliance could void the user's authority to operate this equipment. Please contact Turtle Beach for a list of approved 2.4 GHz and 5.0 GHz antennas.  
**Unintended National Information Infrastructure (U-NII) Bands Operation Statement**  
Within the 5.25-5.85 GHz band, U-NII devices will be restricted to indoor operations to reduce any potential for harmful interference to co-channel MSS operations.  
The U-NII devices shall accept any interference from legal communications and shall not interfere with the legal communications. If interference is caused, the user must stop operating the device immediately and cannot operate until the harmful interference is clear. Manufacturers of U-NII devices are responsible for ensuring frequency stability such that an emission is maintained within the band of operation under all conditions of normal operation as specified in this user manual.  
**Dynamic Frequency Selection (DFS)**  
U-NII devices operating in the 5.25-5.85 GHz and 5.47-5.725 GHz bands shall employ a DFS radar detection mechanism to detect the presence of radar systems and to avoid co-channel operation with radar systems in order to reduce the likelihood of interference to radar.  
The modification of wireless broadband and other transmitter devices to operate on unauthorized frequencies or the disabling of DFS capabilities is a violation of FCC rules and may result in unlawful interference to radio communications services critical to public safety.  
This product is compliant with the Consumer Product Safety Improvement Act of 2008, Public Law 110-314 (CPSIA)

**Canadian ICES Statements (IC)**  
38794-2780: Stealth™ 700X Gen 2  
This device complies with ICES-003 and RSS-247 of Industry Canada. Operation is subject to the following two conditions:  
1. This device may not cause interference.  
2. This device must accept any interference, including interference that may cause undesired operation of the device.  
**Ce dispositif est conforme aux normes NMB003 et CNR-247 d'Industrie Canada.**  
1. L'utilisation de ce dispositif est autorisée seulement aux conditions suivantes:  
2. Il ne doit pas produire de brouillage et l'utilisateur du dispositif doit être prêt à accepter tout brouillage radioélectrique reçu, même si ce brouillage est susceptible de compromettre le fonctionnement du dispositif.  
To prevent radio interference to the licensed service (i.e. co-channel Mobile Satellite System) this device is intended to be operated indoors and away from windows to provide maximum shielding. Equipment (or its transmit antenna) that is installed outdoors is subject to licensing and not supported by Stealth™ 700X Gen 2.  
**Pour éviter les interférences radio au service agréé (i.e. -d.) Les systèmes par satellite mobile co-canal, cet appareil est destiné à fonctionner à l'intérieur et à l'extérieur des fenêtres pour assurer un blindage maximal. L'équipement (ou son antenne d'émission) installé à l'extérieur est soumis à la licence de licences et n'est pas pris en charge par les modèles Stealth™ 700X Gen 2.**  
**RF Radiation Exposure & Hazard Statement**  
To ensure compliance with RSS-102 RF exposure requirements, this device must be installed in a location such that the antenna of the device will be greater than 2 cm (0.8 in.) away from all persons. Using higher gain antennas and types of antennas not covered under the FCC certification of this product is not allowed. Installers of the radio and end users of the product must adhere to the installation instructions provided in this manual. This transmitter must not be co-located or operated in conjunction with any other antenna or transmitter.  
**Exposition aux radiations RF & Mention de danger**  
Pour assurer la conformité avec les exigences RSS-102 d'exposition aux RF (Radio Fréquences), cet appareil doit être installé dans un endroit où l'antenne de l'appareil sera située à une distance de plus de 2 cm (0,8 po) de toutes personnes. L'utilisation d'antennes à gain plus élevé et les types d'antennes qui ne sont pas couverts en vertu de la certification IC de ce produit n'est pas autorisée. Les installateurs de la radio et les utilisateurs du produit final doivent se conformer aux instructions d'installation fournies dans ce manuel. Cet appareil ne doit pas être co-implanté ou exploité en conjonction avec toute autre antenne ou transmetteur.

**Deployment Statement**  
This product is certified for indoor deployment only in the 5150-5250 MHz band. Do not install or use this product outdoors in that frequency band in Canada.  
**Déclaration de déploiement**  
Ce produit est certifié pour le déploiement à l'intérieur tout en rencontrant les limites de cette bande de fréquences: 5150-5250 MHz. Ne pas installer ou utiliser ce produit à l'extérieur au Canada, si cette bande de fréquences n'est pas autorisée.  
**Operation in the Frequency Bands 5470-9725 MHz and 9725-9850 MHz**  
Until further notice, devices subject to this section shall not be capable of transmitting in the band from 5400-5650 MHz. This restriction is for the protection of Environment Canada's wildlife radar systems operating in this band. Users are advised that high-power radars are allocated as primary users (i.e. priority users) of the bands 5250-5350 MHz and 5450-5850 MHz and that these radars could cause interference and/or damage to the LAN.  
**Fonctionnement dans les bandes de fréquence 5470-9725 MHz et 9725-9850 MHz**  
Jusqu'à nouvel avis, les appareils soumis à cette section ne peuvent pas émettre des transmissions dans la bande de 5400-5650 MHz. Cette restriction concerne la protection des radars météorologiques d'Environnement Canada opérant dans cette bande. Les utilisateurs des avertis que les utilisateurs de radars de haute puissance sont désignés utilisateurs principaux (i.e., -d.), qu'ils ont la priorité pour les bandes 5250-5350 MHz et 5450-5850 MHz et que ces radars pourraient causer des interférences et/ou des dommages à leur LAN.

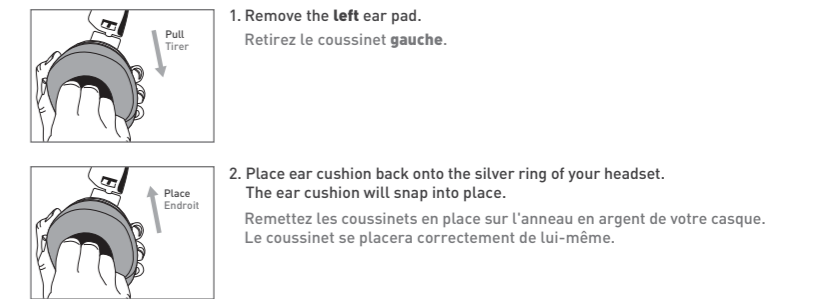
**European Union and European Fair Trade Association Regulatory Compliance**  
This equipment may be operated in the countries that comprise the member countries of the European Union and the European Fair Trade Association. These countries, listed below, are referred to as the European Community through this document.  
AUSTRIA, BELGIUM, BULGARIA, CYPRUS, CZECH REPUBLIC, DENMARK, ESTONIA, FINLAND, FRANCE, GERMANY, GREECE, HUNGARY, IRELAND, ITALY, LATVIA, LITHUANIA, LUXEMBOURG, MALTA, NETHERLANDS, POLAND, PORTUGAL, ROMANIA, SLOVAKIA, SLOVENIA, SPAIN, SWEDEN, UNITED KINGDOM, ICELAND, LIECHTENSTEIN, NORWAY, SWITZERLAND  
**Mexican FT-008 Statement**  
La operación de este equipo está sujeta a las siguientes dos condiciones: (1) es posible que este equipo o dispositivo no cause interferencia perjudicial y (2) este equipo o dispositivo debe aceptar cualquier interferencia, incluyendo a la que pueda causar su operación no deseada.  
**Japanese Compliance Statement**  
5.1.515 ~ 5.35 GHz operation  
電波法(平成15年2/25)4 GHz帯は屋内での使用にのみ準拠する

**Declaration of Conformity**  
Marking by this symbol indicates compliance with the Essential Requirements of the Radio Equipment Directive (RED) of the European Union (2014/53/EU). This symbol also indicates compliance with the following performance standards:  
**Safety:** IEC 60950-1; EN 60950-1:2009 + A1: 2010 + A12: 2011 + A2: 2013 (IT-Mark Licentia), IEC 60950-1:2005 (2nd Ed.) + Am 1: 2009 + Am 2: 2013 (CB Scheme Certificate), EN 62368-1:2011 (CB Scheme Certificate), IEC 62368-1:2014 (CB Scheme Certificate), EN 62368-1:2013, EN 62368-2:2013, EN 131:3:2013  
Additional licenses issued for specific countries available on request  
**EMC:** EN 55032:2015, CISPR 32: 2015, EN 301 489-1 V2.1.1 (2017-02), EN 301 489-1 V1.1 (2014-11), EN 61000-4-2:2009, EN 61000-4-3:2008 + A1: 2008 + A2: 2010, EN 61000-4-8:2010  
The products are licensed, as required, for additional country specific standards for the International Marketplace. Additional issued licenses available upon request.  
**RoHS:** EN 300 328 V2.1 (2019-07), EN 300 893 V2.1.1 (2017-05), EN 15311:2008  
**Environmental:** RoHS 2015/863 amending Annex II to 2011/65/EU, WEEE 2012/19/EU, REACH 2006/1907/EC, Packaging 94/62/EC, Battery 2006/46/EC, Toy Safety Directive 2009/48/EC  
**Warning!** This is a Class B product. In a domestic environment, this product may cause radio interference, in which case, the user may be required to take appropriate measures.  
**Achtung!** Dieses ist ein Gerät der Funkstrahlungsklasse B. In Wohnbereichen können bei Betrieb dieses Gerätes Rundfunkstörungen auftreten, in welchen Fällen der Benutzer für entsprechende Gegenmaßnahmen verantwortlich ist.  
**Attention!** Ceci est un produit de Classe B. Dans un environnement domestique, ce produit risque de créer des interférences radioélectriques, à attention! alors à l'utilisateur de prendre les mesures spécifiques appropriées.  
**Indoor Operation** The Stealth™ 700X Gen 2 operates in the 5150 to 5350 MHz frequency band and is restricted to indoor use only!  
**Antenna** The Stealth™ 700X Gen 2 has integrated antennas which cannot be replaced.  
**Power Level Control:** The Stealth™ 700X Gen 2 does not allow for customized power level control.  
**Operating Frequency** The operating frequency of the Stealth™ 700X Gen 2 is determined by the host console system. As such, it is important that the host console system is correctly configured to meet the local regulations.  
**Recycling:** This symbol on the product or its packaging indicates that this product must not be disposed of with your other household waste. Instead, it is your responsibility to dispose of your waste equipment by handing it over to a designated collection point for the recycling of waste electrical and electronic equipment. The separate collection and recycling of your waste equipment at the time of disposal will help conserve natural resources and ensure that it is recycled in a manner that protects human health and the environment. For more information about where you can drop off your waste for recycling, please contact your local authority, or where you purchased your product.

Turtle Beach Europe Ltd is obligated as a producer with a main activity of selling under the Producer Responsibility Obligations (Packaging Waste) Regulations 2007. To fulfil our obligation we are registered with Comply Direct under the Recycling Room. Here you will find advice and information on packaging waste management, recycling symbols and the waste hierarchy principles of reduce, reuse and recycle. <https://www.complydirect.com/the-recycling-room/>  
**Please visit the following URL for a complete copy of the Declaration of Conformity:** <http://www.turtlebeach.com/homologation>  
**Mexican FT-008 Statement**  
La operación de este equipo está sujeta a las siguientes dos condiciones: (1) es posible que este equipo o dispositivo no cause interferencia perjudicial y (2) este equipo o dispositivo debe aceptar cualquier interferencia, incluyendo a la que pueda causar su operación no deseada.  
**Japanese Compliance Statement**  
5.1.515 ~ 5.35 GHz operation  
電波法(平成15年2/25)4 GHz帯は屋内での使用にのみ準拠する

### To access the rating label:

#### Pour accéder à l'étiquette :



- 1. Remove the left ear pad. Retirez le coussinet gauche.

- 2. Place ear cushion back on the silver ring of your headset. The ear cushion will snap into place. Remettez les coussinets en place sur l'anneau en argent de votre casque. Le coussinet se placera correctement de lui-même.

### Not seeing what you're looking for here?

Visit [turtlebeach.com/support](http://turtlebeach.com/support) for the latest Tech Support information.

### Vous n'avez pas trouvé ce que vous cherchiez ?

Rendez-vous sur [turtlebeach.com/support](http://turtlebeach.com/support) pour consulter les dernières informations de l'assistance technique.